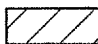


CA001

K:\Springfield\0403510\Draw\Sheets\1105\FILE: 08_EXISTCONDADALT.dwg
LAYOUT: Layout1
UPDATE BY: cgrth
SURVEY BOOK #
DATE: Sat 1/28/06 12:26pm
XREF DWG: C:\info.dwg
Utlis98.dwg
SEQuodBase.DWG
CaptionBase.dwg

LEGEND

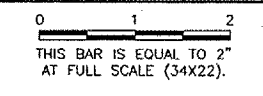
— S —	SANITARY SEWER		BITUMINOUS PAVEMENT REMOVAL
— W —	WATER MAIN		
— E —	ELECTRICAL LINE		
— G —	GAS LINE		
⊕	TIE DOWN		
⊙	GROUND ROD		
⊙	EXISTING INLET		

THE LOCATION OF UNDERGROUND UTILITIES AS INDICATED ON THE PLANS HAS BEEN OBTAINED FROM EXISTING RECORDS. NEITHER THE OWNER NOR THE ENGINEER ASSUMES ANY RESPONSIBILITY WHATEVER IN RESPECT TO THE ACCURACY, COMPLETENESS, OR SUFFICIENCY OF THE INFORMATION. THERE IS NO GUARANTEE, EITHER EXPRESSED OR IMPLIED, THAT THE LOCATIONS, SIZE AND TYPE OF MATERIAL OF EXISTING UNDERGROUND UTILITIES INDICATED ARE REPRESENTATIVE OF THOSE TO BE ENCOUNTERED IN THE CONSTRUCTION.

IT SHALL BE THE CONTRACTOR'S RESPONSIBILITY TO DETERMINE THE ACTUAL LOCATION OF ALL SUCH FACILITIES, INCLUDING SERVICE CONNECTIONS TO UNDERGROUND UTILITIES. PRIOR TO CONSTRUCTION, THE CONTRACTOR SHALL NOTIFY THE UTILITY COMPANY OF HIS OPERATIONAL PLANS. THE CONTRACTOR SHALL MAKE ARRANGEMENTS FOR DETAILED INFORMATION AND ASSISTANCE IN LOCATING UTILITIES. IN THE EVENT AN UNEXPECTED UTILITY INTERFERENCE IS ENCOUNTERED DURING CONSTRUCTION, THE CONTRACTOR SHALL IMMEDIATELY NOTIFY THE UTILITY COMPANY, THE OWNER AND THE ENGINEER. ANY SUCH MAINS AND/OR SERVICES DISTURBED BY THE CONTRACTOR'S OPERATIONS SHALL BE RESTORED IMMEDIATELY AT HIS EXPENSE.

REVISIONS

NUMBER	BY	DATE



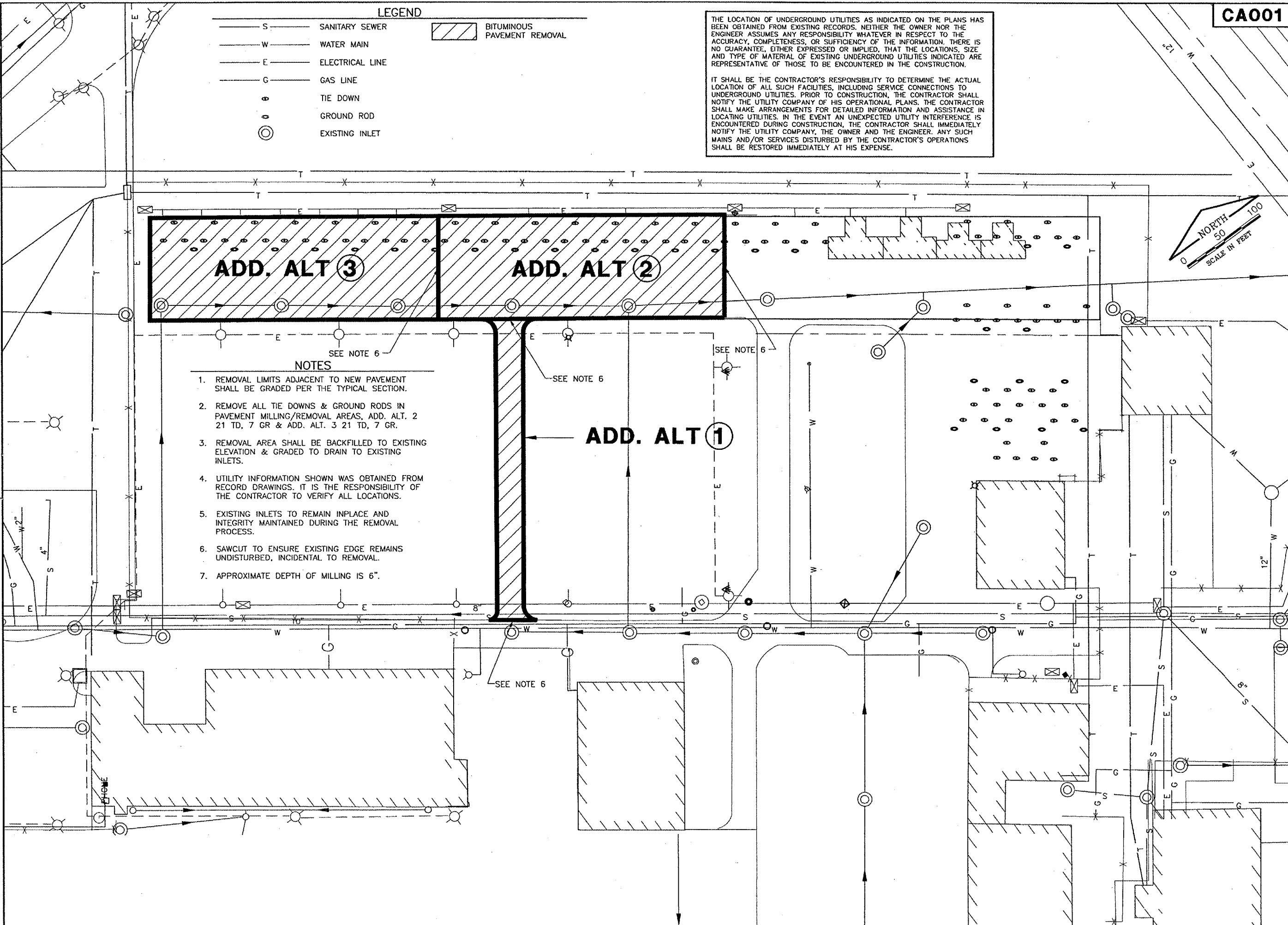
**SPRINGFIELD AIRPORT AUTHORITY
ABRAHAM LINCOLN CAPITAL AIRPORT
SPRINGFIELD, ILLINOIS**

**REHABILITATE SOUTHEAST QUADRANT HANGAR PAVEMENTS
ADDITIVE ALTERNATE 1, 2 & 3
EXISTING CONDITIONS
AND REMOVALS**

© Copyright CMT, Inc.

CMT
CRAWFORD, MURPHY & TILLY, INC.
CONSULTING ENGINEERS
License No. 84-000613

DESIGN BY:	CBG
DRAWN BY:	CMT
CHECKED BY:	<i>CBL</i>
APPROVED BY:	<i>RW</i>
DATE:	01/27/2006
JOB No:	04035-10-00



- NOTES**
1. REMOVAL LIMITS ADJACENT TO NEW PAVEMENT SHALL BE GRADED PER THE TYPICAL SECTION.
 2. REMOVE ALL TIE DOWNS & GROUND RODS IN PAVEMENT MILLING/REMOVAL AREAS, ADD. ALT. 2 21 TD, 7 GR & ADD. ALT. 3 21 TD, 7 GR.
 3. REMOVAL AREA SHALL BE BACKFILLED TO EXISTING ELEVATION & GRADED TO DRAIN TO EXISTING INLETS.
 4. UTILITY INFORMATION SHOWN WAS OBTAINED FROM RECORD DRAWINGS. IT IS THE RESPONSIBILITY OF THE CONTRACTOR TO VERIFY ALL LOCATIONS.
 5. EXISTING INLETS TO REMAIN INPLACE AND INTEGRITY MAINTAINED DURING THE REMOVAL PROCESS.
 6. SAWCUT TO ENSURE EXISTING EDGE REMAINS UNDISTURBED, INCIDENTAL TO REMOVAL.
 7. APPROXIMATE DEPTH OF MILLING IS 6".