

CA001

K:\Springfield\040310\Draw\Sheets\1105\
FILE: 07_EXISTCOND.dwg
LAYOUT: Layout1
UPDATE BY: cgrth
SURVEY BOOK #
DATE: Sat 1/28/06 11:08am
XREF DWG: Cntinfo.dwg
Utl98.dwg
CapitolBase.dwg
SEQuadBase.DWG

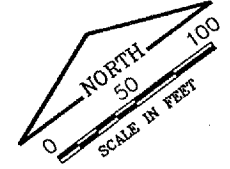
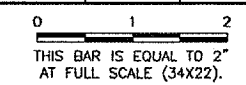
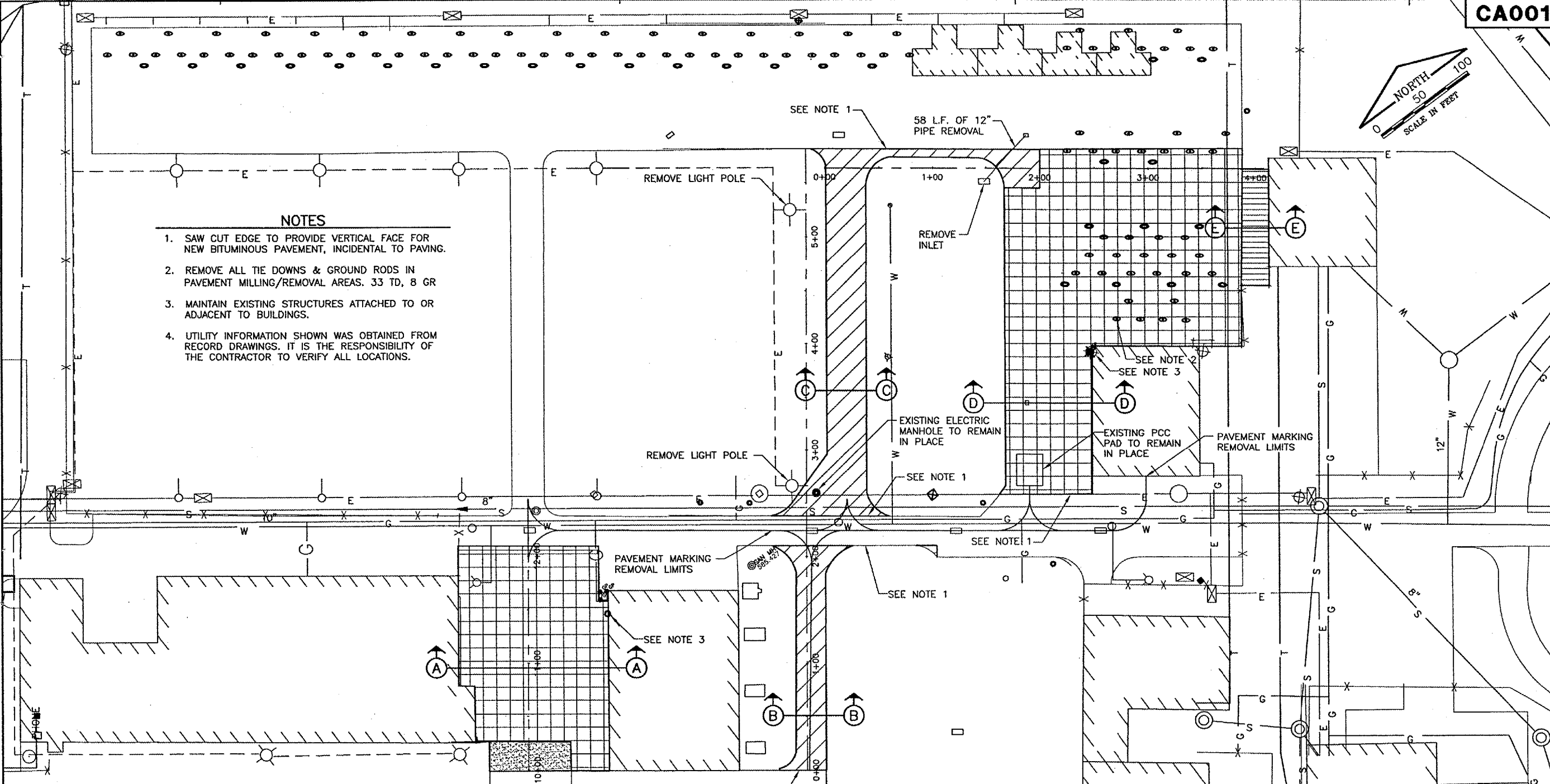


Table with 3 columns: NUMBER, BY, DATE. It is currently empty.



- NOTES
1. SAW CUT EDGE TO PROVIDE VERTICAL FACE FOR NEW BITUMINOUS PAVEMENT, INCIDENTAL TO PAVING.
2. REMOVE ALL TIE DOWNS & GROUND RODS IN PAVEMENT MILLING/REMOVAL AREAS. 33 TD, 8 GR
3. MAINTAIN EXISTING STRUCTURES ATTACHED TO OR ADJACENT TO BUILDINGS.
4. UTILITY INFORMATION SHOWN WAS OBTAINED FROM RECORD DRAWINGS. IT IS THE RESPONSIBILITY OF THE CONTRACTOR TO VERIFY ALL LOCATIONS.



LEGEND
S SANITARY SEWER
W WATER MAIN
E ELECTRICAL LINE
G GAS LINE
SOIL BORING
TIE DOWN
GROUND ROD
LIGHT POLE
EXISTING INLET
PCC & BITUMINOUS PAVEMENT REMOVAL
BITUMINOUS PAVEMENT REMOVAL
3\"/>

THE LOCATION OF UNDERGROUND UTILITIES AS INDICATED ON THE PLANS HAS BEEN OBTAINED FROM EXISTING RECORDS. NEITHER THE OWNER NOR THE ENGINEER ASSUMES ANY RESPONSIBILITY WHATEVER IN RESPECT TO THE ACCURACY, COMPLETENESS, OR SUFFICIENCY OF THE INFORMATION. THERE IS NO GUARANTEE, EITHER EXPRESSED OR IMPLIED, THAT THE LOCATIONS, SIZE AND TYPE OF MATERIAL OF EXISTING UNDERGROUND UTILITIES INDICATED ARE REPRESENTATIVE OF THOSE TO BE ENCOUNTERED IN THE CONSTRUCTION.
IT SHALL BE THE CONTRACTOR'S RESPONSIBILITY TO DETERMINE THE ACTUAL LOCATION OF ALL SUCH FACILITIES, INCLUDING SERVICE CONNECTIONS TO UNDERGROUND UTILITIES. PRIOR TO CONSTRUCTION, THE CONTRACTOR SHALL NOTIFY THE UTILITY COMPANY OF HIS OPERATIONAL PLANS. THE CONTRACTOR SHALL MAKE ARRANGEMENTS FOR DETAILED INFORMATION AND ASSISTANCE IN LOCATING UTILITIES. IN THE EVENT AN UNEXPECTED UTILITY INTERFERENCE IS ENCOUNTERED DURING CONSTRUCTION, THE CONTRACTOR SHALL IMMEDIATELY NOTIFY THE UTILITY COMPANY, THE OWNER AND THE ENGINEER. ANY SUCH MAINS AND/OR SERVICES DISTURBED BY THE CONTRACTOR'S OPERATIONS SHALL BE RESTORED IMMEDIATELY AT HIS EXPENSE.

