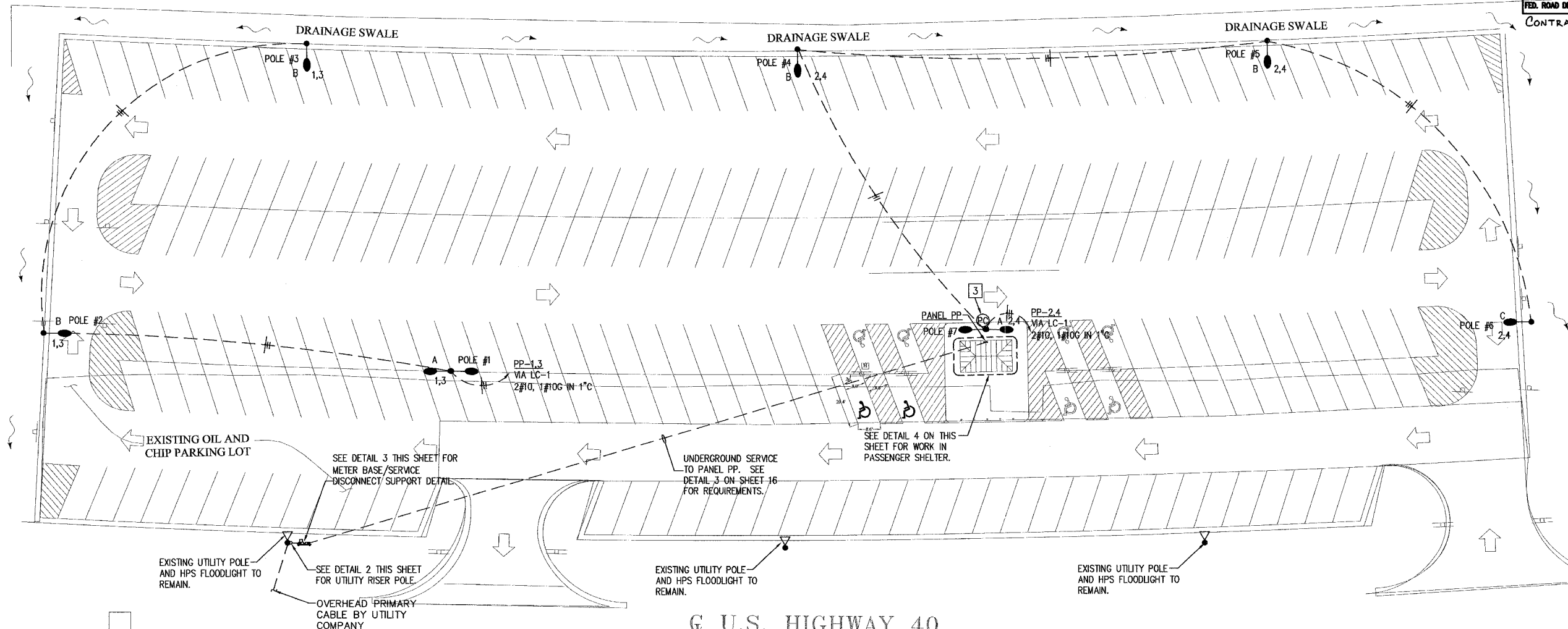


FILE	SECTION	COUNTY	TOTAL SHEETS	SHEET NO.
8673	00-00012-00-PK	MADISON	18	15
FED. ROAD DIST. NO.	ILLINOIS	FED. AID PROJECT		

CONTRACT No. 97270

FINAL	BY	DATE
SURVEY		
PLOTTED		
NOTE BOOK		
TEMPLATE		
AREAS CHECKED		
NO.		

ORIGINAL	BY	DATE
SURVEY		
PLOTTED		
NOTE BOOK		
TEMPLATE		
AREAS CHECKED		
NO.		



U.S. HIGHWAY 40

1 ELECTRICAL SITE LIGHTING PLAN

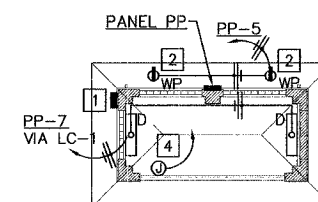
SCALE: 1" = 20'-0"

GENERAL NOTES (THIS SHEET ONLY)

1. ALL SITE LIGHTING CONDUCTORS SHALL BE #10 AWG IN 1" PVC UNLESS OTHERWISE INDICATED. REFER TO PLAN FOR HACHURES INDICATING QUANTITY OF CONDUCTORS IN EACH CONDUIT.
2. REFER TO CIVIL SITE PLAN ON SHEET 6 FOR LOCATION OF ALL POLES.
3. SEE DETAIL 3 ON SHEET 16 FOR ELECTRICAL ONE LINE DIAGRAM AND SERVICE ENTRANCE DETAILS.

KEYED NOTES (THIS SHEET ONLY)

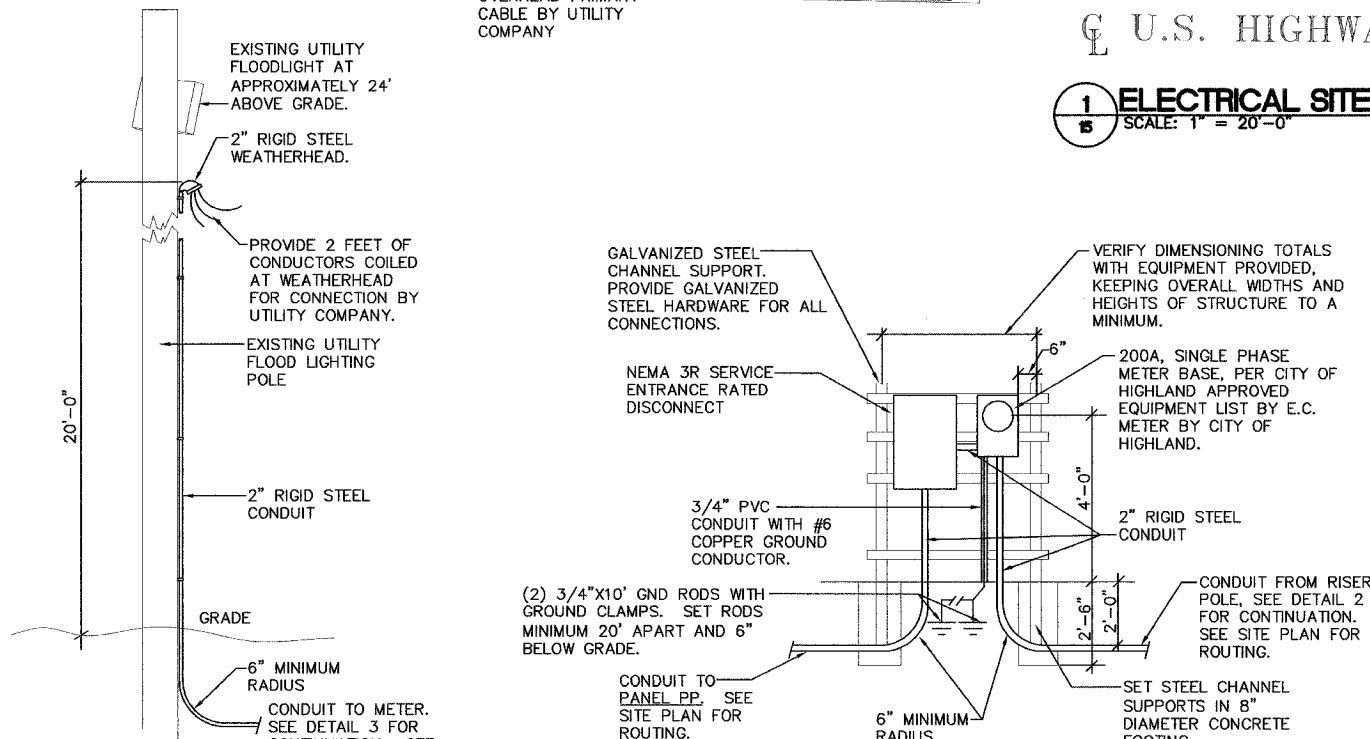
- 1 NEMA 3R, SURFACE MOUNTED ENCLOSURE WITH PADLOCKABLE HARDWARE, 18"x18"x8" OR SIZED TO ACCOMMODATE ASTRONOMICAL TIMECLOCK AND 8 POLE MECHANICALLY HELD LIGHTING CONTACTOR (LC-1). SEE LIGHTING CONTROL WIRING DIAGRAM ON SHEET 16.
- 2 RECESS MOUNT RECEPTACLE IN SOFFIT OF PASSENGER SHELTER.
- 3 MOUNT PHOTOCELL FOR CONTROL OF SITE LIGHTING ON TOP CAP OF SITE LIGHTING POLE. SEE LIGHTING CONTROL DIAGRAM ON SHEET 16.
- 4 ROUGH-IN A 4" SQUARE BOX WITH GASKETED BLANK COVERPLATE AT 9'-0" AFF. EXTEND A 3/4" CONDUIT BACK TO PANEL PP FOR FUTURE SPACE HEATER.



NOTE:
ALL CONDUCTORS ON THIS PLAN
SHALL BE #12 AWG IN 3/4"
CONDUIT UNLESS OTHERWISE
INDICATED

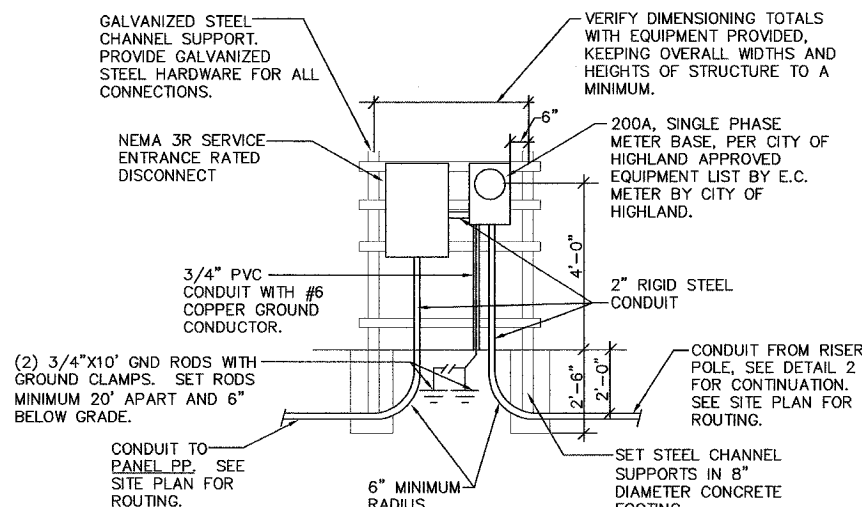
4 PASSENGER SHELTER PLAN

SCALE: 1/8" = 1'-0"



2 RISER POLE DETAIL

NO SCALE



3 METER BASE SUPPORT DETAIL

NO SCALE

<div><div><div><div><div><div>B</div><div>R</div><div>i</div><div>C</div></div></div><div><div><div><div></div></div><div><div></div></div></div><div><div>Partnership, LLC</div><div>Consulting Engineers</div></div></div></div><div><div>100 EAST WASHINGTON, SUITE 220</div><div>BELLEVIEW, IL 62220</div><div>TEL 618.277.5200</div><div>FAX 618.277.5227</div></div></div></div>				<div><div><div>ELECTRICAL PLANS AND DETAILS</div><div>HIGHLAND PARK-RIDE IMPROVEMENTS</div><div>MADISON COUNTY TRANSIT</div><div>HIGHLAND, ILLINOIS</div><div>SECTION No. 00-00012-00-PK</div></div></div>					
REVISIONS					SCALE: AS NOTED				
NO.	DATE	BY	REVISIONS		REMARKS				
							DSN. BY: JEN	DATE: 11-30-05	SHEET
							DWN. BY: JEN	DATE: 11-30-05	15
							CHKD: BEC	DATE: 11-30-05	
DWG. NO.					JOB NO. 1268-04 DWG NAME: E1 OF 2 SHTS				