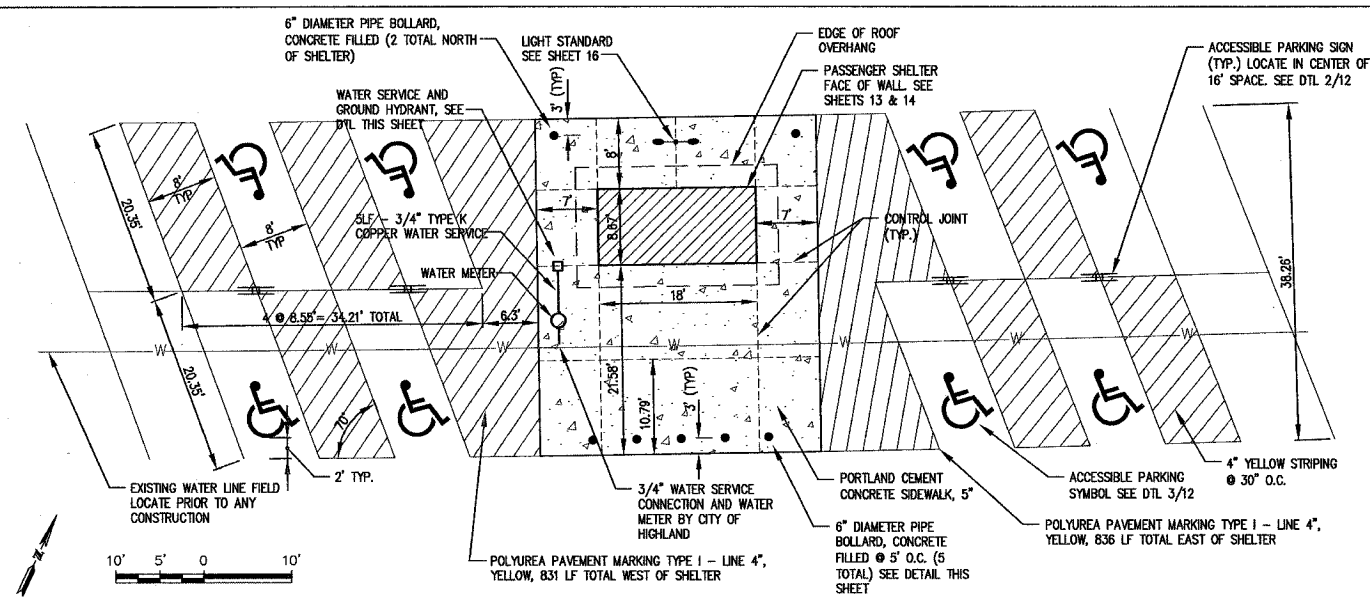


F.A.U. RITE.	SECTION	COUNTY	TOTAL SHEETS	SHEET NO.
8873	00-00012-00-PK	MADISON	18	12
FED. ROAD DIST. NO.	ILLINOIS	FED. AID PROJECT		

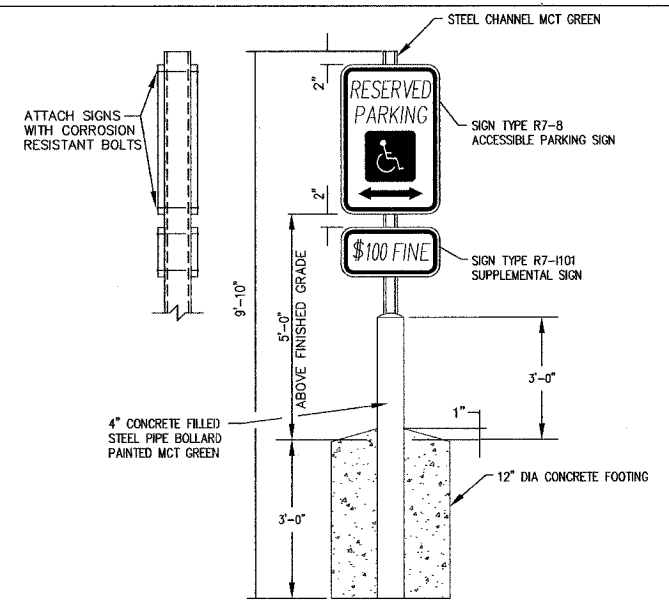
CONTRACT NO. 97270

DATE	BY
DATE	BY
DATE	BY
DATE	BY



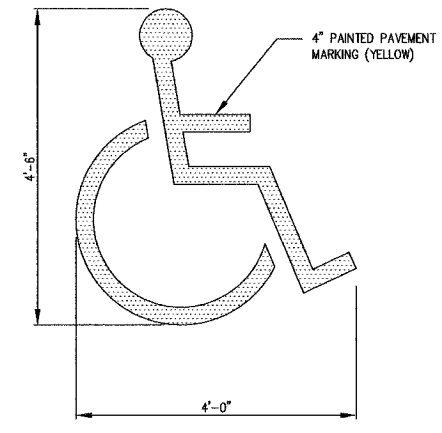
PASSANGER SHELTER PARKING LAYOUT

1" = 10'



ACCESSIBLE PARKING SIGN

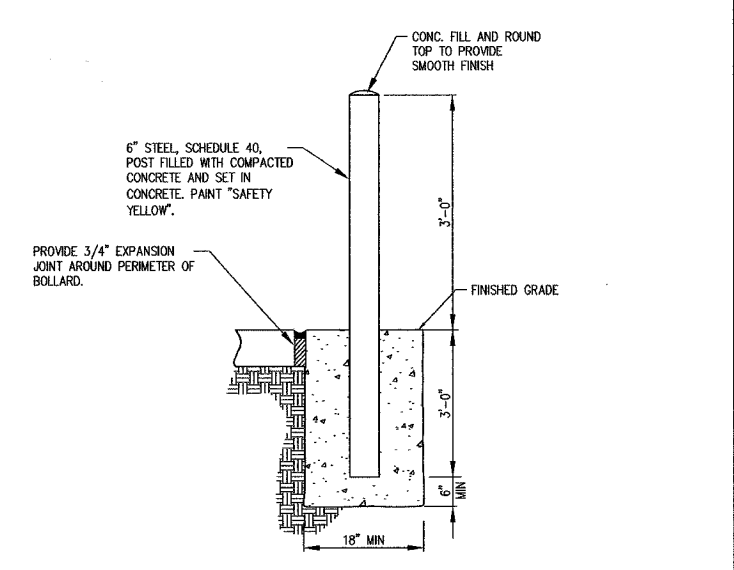
N.T.S



ACCESSIBLE PARKING SYMBOL

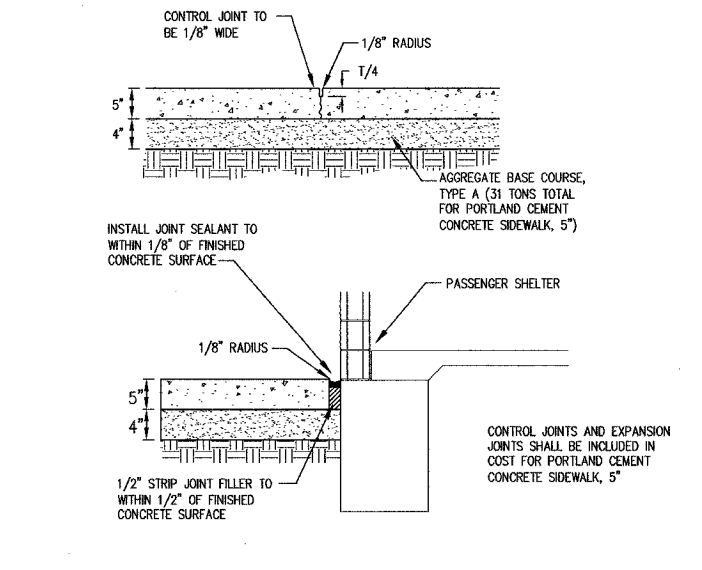
N.T.S

DATE	BY
DATE	BY
DATE	BY
DATE	BY



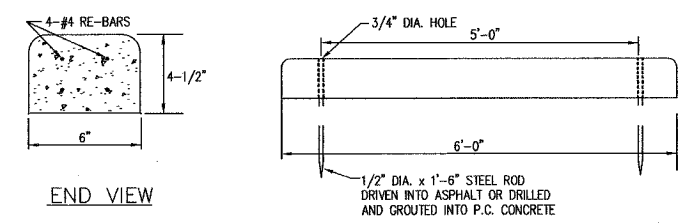
6" DIAMETER PIPE BOLLARD, CONCRETE FILLED

N.T.S



EXPANSION AND CONTROL JOINTS

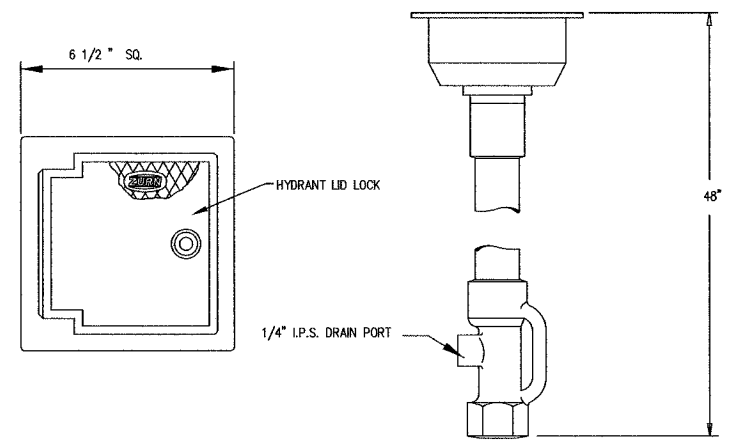
N.T.S



NOTE: WHEEL STOPS TO BE LOCATED 2.5' FROM CENTER OF WHEELSTOP TO EDGE OF PAVEMENT AT NEAREST LOCATION

WHEEL STOP

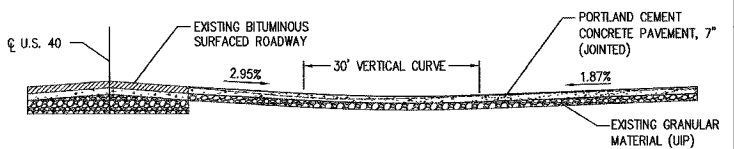
N.T.S



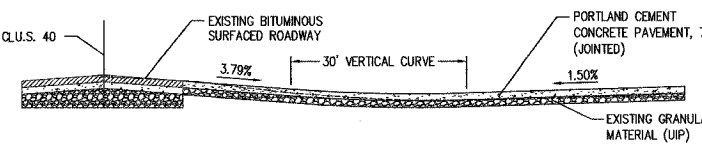
GROUND HYDRANT - ZURN MODEL Z1361-CL-VB WITH CYLINDER LOCK AND VACUUM BREAKER OR APPROVED EQUAL

GROUND HYDRANT

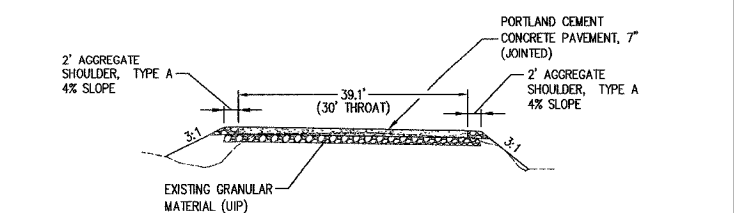
N.T.S



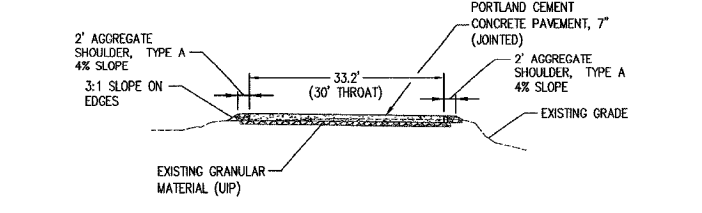
SECTION A-A



SECTION B-B



SECTION C-C



SECTION D-D

WEST ENTRANCE PROFILE AND SECTION

H=1":15' V=1":7.5'

8

EAST ENTRANCE PROFILE AND SECTION

H=1":15' V=1":7.5'

9

NOT IN USE

N.T.S

10

Juneau Associates, Inc. P.C.
 CONSULTING ENGINEERS AND LAND SURVEYORS
 7100 State Street, P.O. Box 1325
 Granite City, Illinois 62040-4725
 Phone: (618) 977-1400 / (618) 452-5535
 Fax: (618) 452-0541

700 North Research Drive
 Edwardsville, Illinois 62025-3640
 Phone: (618) 629-0900 / (618) 629-2000
 Fax: (618) 629-0941

MISC. CONSTRUCTION DETAILS
 HIGHLAND PARK-RIDE IMPROVEMENTS
 MADISON COUNTY TRANSIT
 HIGHLAND, ILLINOIS
 SECTION No. 00-00012-00-PK

REVISIONS				SCALE:	
NO.	DATE	BY	REMARKS	DSN. BY:	SHEET
				RGL/AJW	12
				RGL/AJW	12
				RAK	12
DWG. NO.	ED54401	DWG. NAME:			OF 18 SHTS