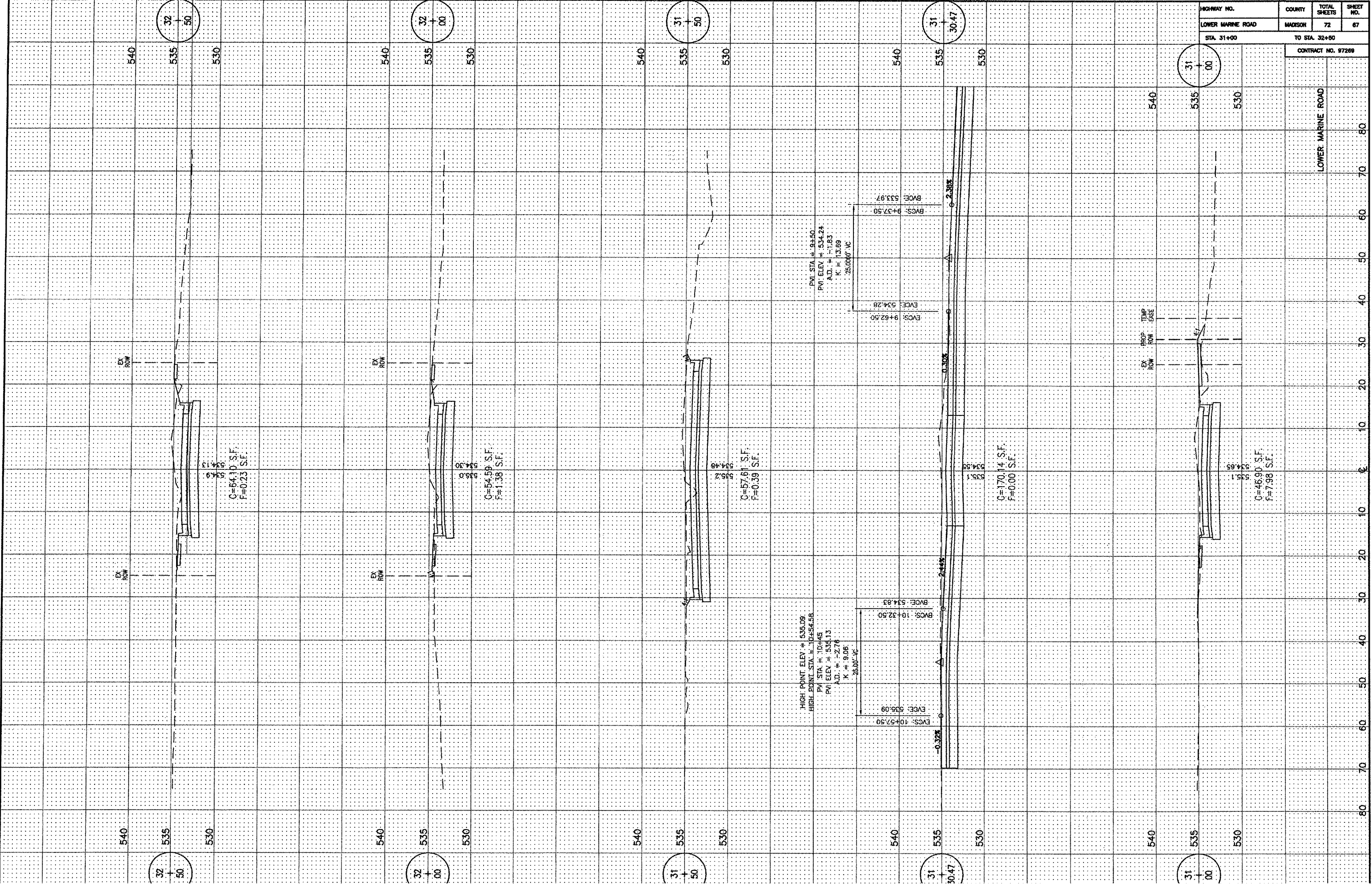


| | | | |
|--------------------|---------|---------------|-----------|
| HIGHWAY NO. | COUNTY | TOTAL SHEETS | SHEET NO. |
| LOWER MARINE ROAD | MADISON | 72 | 67 |
| STA. 31+00 | | TO STA. 32+50 | |
| CONTRACT NO. 97269 | | | |



C=64.10 S.F.
F=0.23 S.F.

C=54.59 S.F.
F=1.38 S.F.

C=67.61 S.F.
F=0.39 S.F.

C=170.14 S.F.
F=0.00 S.F.

C=46.90 S.F.
F=7.98 S.F.

HIGH POINT ELEV. = 535.09
HIGH POINT STA. = 10+54.58
PVI STA. = 10+45
PVI ELEV. = 535.13
A.D. = -2.76
K = 9.06
25.00' VC

PVI STA. = 9+50
PVI ELEV. = 534.24
A.D. = -1.63
K = 13.89
25.00' VC

EVC: 10+57.50
ELEV: 535.09
BVC: 10+32.50
ELEV: 534.85

EVC: 9+62.50
ELEV: 534.28
BVC: 9+37.50
ELEV: 533.97

31
30.47

31
30.47

32
50

32
50

32
00

32
00

31
50

31
50

31
00

31
00

LOWER MARINE ROAD

EX. ROW

EX. ROW

EX. ROW

EX. ROW

EX. ROW

EX. ROW

PROP. ROW

TEMP. EDGE