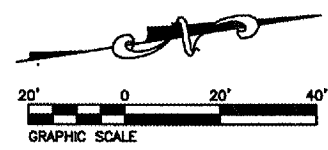
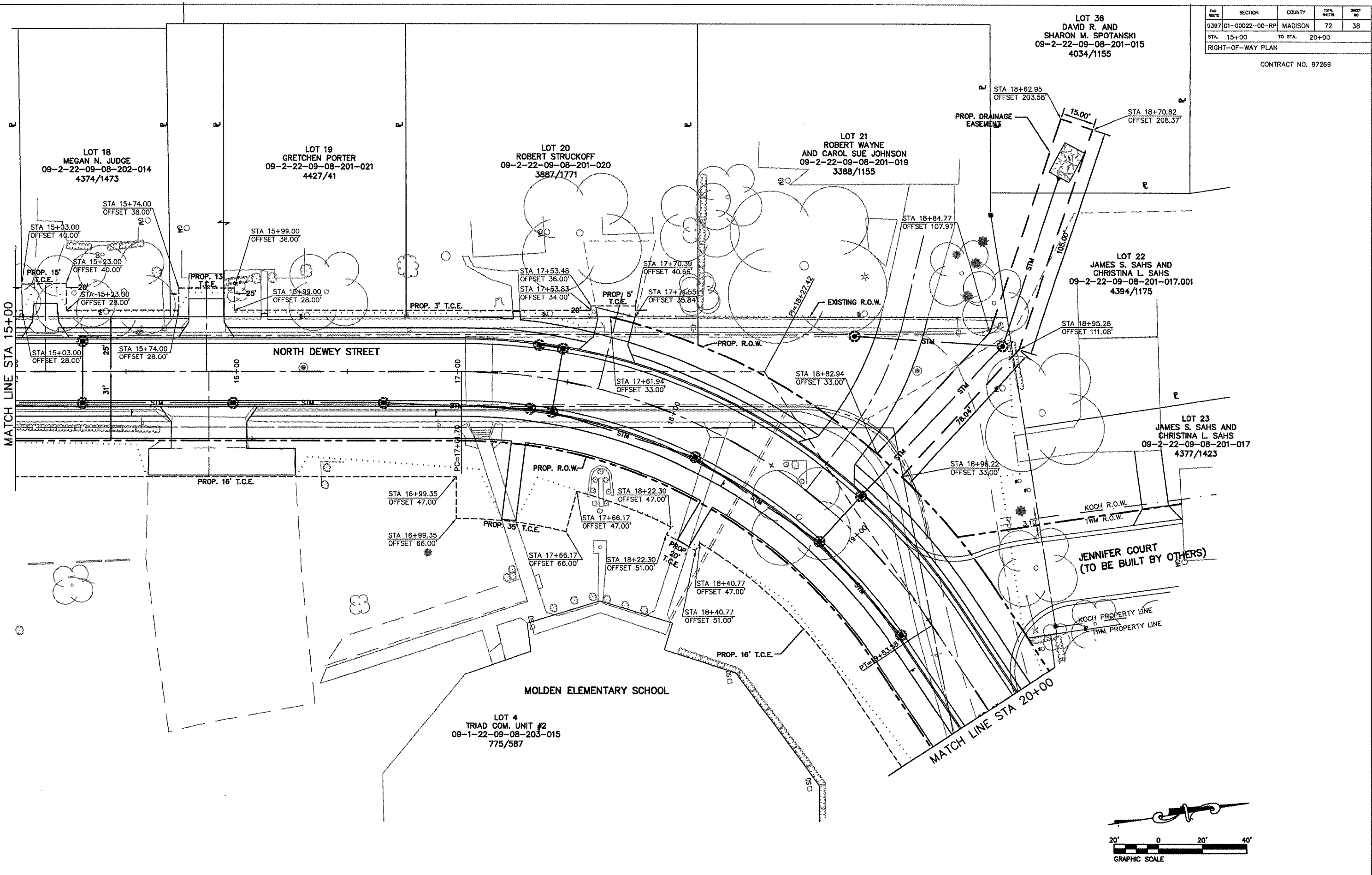


PARL	SECTION	COUNTY	TOTAL SHEETS	SHEET NO
B397	01-00022-00-RP	MADISON	72	38
STA. 15+00	TO STA. 20+00			
RIGHT-OF-WAY PLAN				

CONTRACT NO. 97269

LOT 36  
DAVID R. AND  
SHARON M. SPOTANSKI  
09-2-22-09-08-201-015  
4034/1155



P:\000139a\dwg\000139AR02.dwg 11/29/2005 8:55:38 AM CST