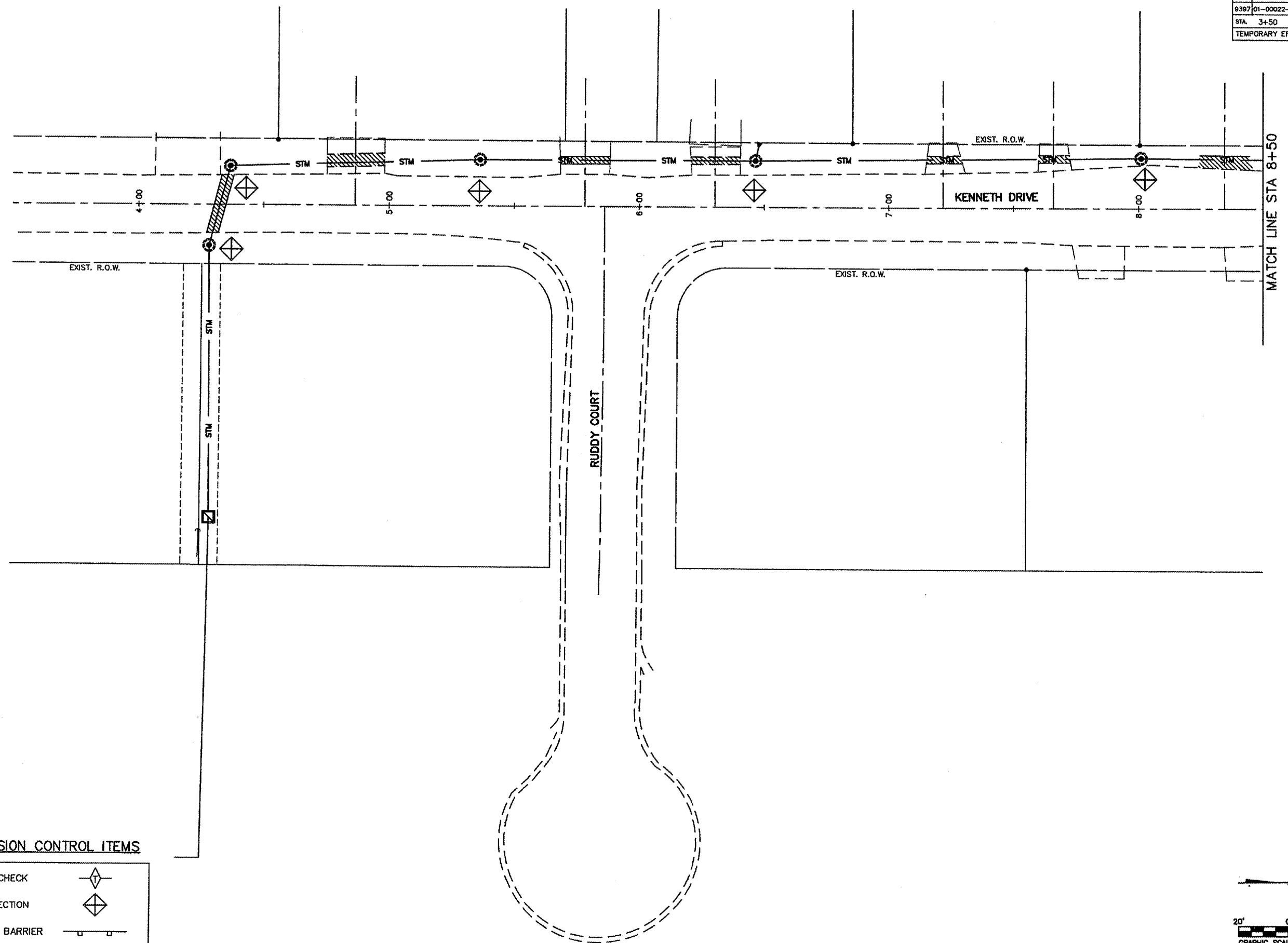


PAV. TYPE	SECTION	COUNTY	TOTAL SHEETS	SHEET NO.
9397	01-00022-00-RP	MADISON	72	28
STA. 3+50		TO STA. 8+50		
TEMPORARY EROSION CONTROL				

CONTRACT NO. 97269



TEMPORARY EROSION CONTROL ITEMS

- ① TEMPORARY DITCH CHECK
- ② INLET & PIPE PROTECTION
- ③ PERIMETER EROSION BARRIER

