

ROUTE	SECTION	COUNTY	TOTAL SHEETS	SHEET NO.
T.R. 214	05-01127-00-BR	JASPER	14	1
CONTRACT NO. 95451		ILLINOIS	PROJECT BROS-079(131)	

STATE OF ILLINOIS
DEPARTMENT OF TRANSPORTATION
DIVISION OF HIGHWAYS

Joint Utility Locating Information for Excavators
JULIE 1-800-892-0123

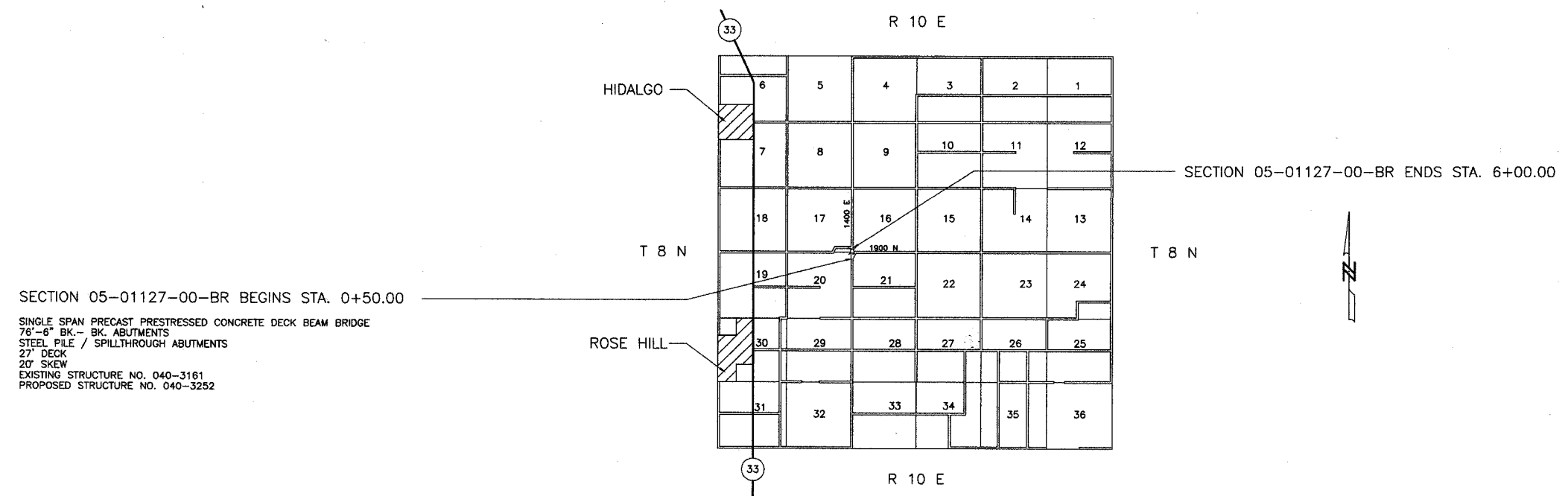
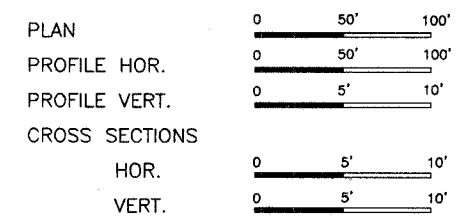
PLANS FOR PROPOSED
BRIDGE REPLACEMENT & REHABILITATION PROGRAM
SECTION 05-01127-00-BR JASPER COUNTY
PROJECT BROS-079(131)
JOB NO. C-97-028-06
T.R. 214

INDEX OF SHEETS

SHEET	ITEM
1	COVER SHEET
2	SUMMARY OF QUANTITIES
3-4	ROADWAY PLAN AND PROFILE
5	GENERAL PLAN AND ELEVATION
6	STANDARD CS-2733-75R
7	STANDARD CB-2733-36
8	STANDARD CA-2733-20
9	STANDARD CR-TS1
10	STANDARD CN
11	STANDARD CX-1
12-14	CROSS SECTIONS

STANDARD DRAWINGS

STANDARD 000001-04
STANDARD 280001-02
STANDARD 702001-05
STANDARD BLR 21-6
STANDARD BLR 22-4



SECTION 05-01127-00-BR BEGINS STA. 0+50.00

SINGLE SPAN PRECAST PRESTRESSED CONCRETE DECK BEAM BRIDGE
76'-6" BK.-BK. ABUTMENTS
STEEL PILE / SPILLTHROUGH ABUTMENTS
27' DECK
20' SKEW
EXISTING STRUCTURE NO. 040-3161
PROPOSED STRUCTURE NO. 040-3252

FUNCTIONAL CLASSIFICATION - LOCAL ROAD
ADT = 75
DESIGN SPEED = 30 MPH

CONTRACT NO. 95451

NET LENGTH SECTION 05-01127-00-BR = 550.00 Ft. = 0.104 Mi.

Roger A. Charleston
Ill. Reg. Prof. Eng. # 29195
Lic. Expires 11/30/06

CHARLESTON ENGINEERING, INC.
105 N. KITCHELL
P.O. BOX 397
OLNEY, ILLINOIS 62450
PH. 618-392-0736



APPROVED 11-10 20 05
Roger A. Charleston
COUNTY ENGINEER

PASSED 12/23 20 05
Marcus K. Kroll
DISTRICT SEVEN ENGINEER OF
LOCAL ROADS AND STREETS

Releasing For
Bid Based on
Limited Review

12/23 2005
Christina M. Reed
DEPUTY DIRECTOR OF HIGHWAYS
REGION FOUR ENGINEER

STATE OF ILLINOIS
DEPARTMENT OF TRANSPORTATION