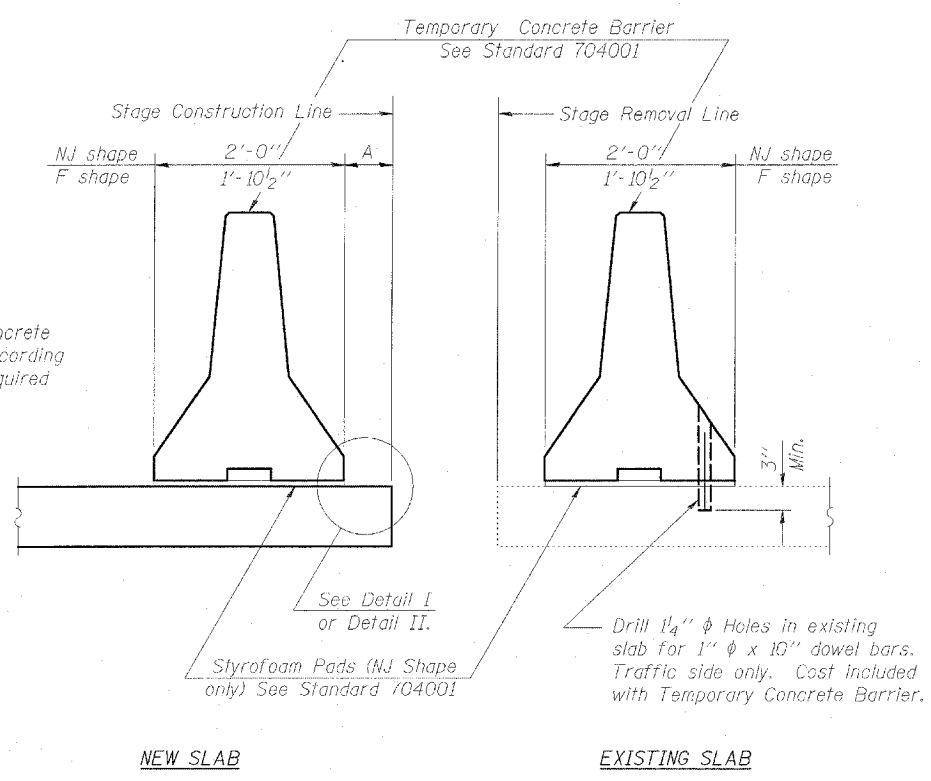
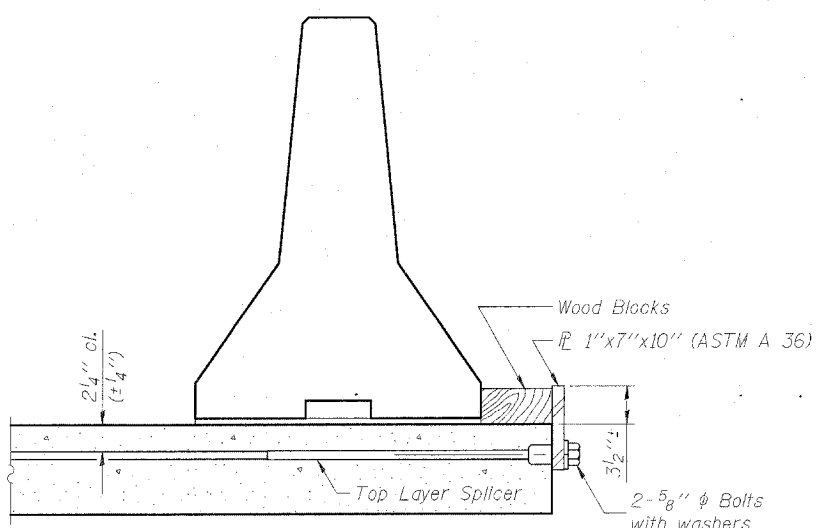


Contract #94778

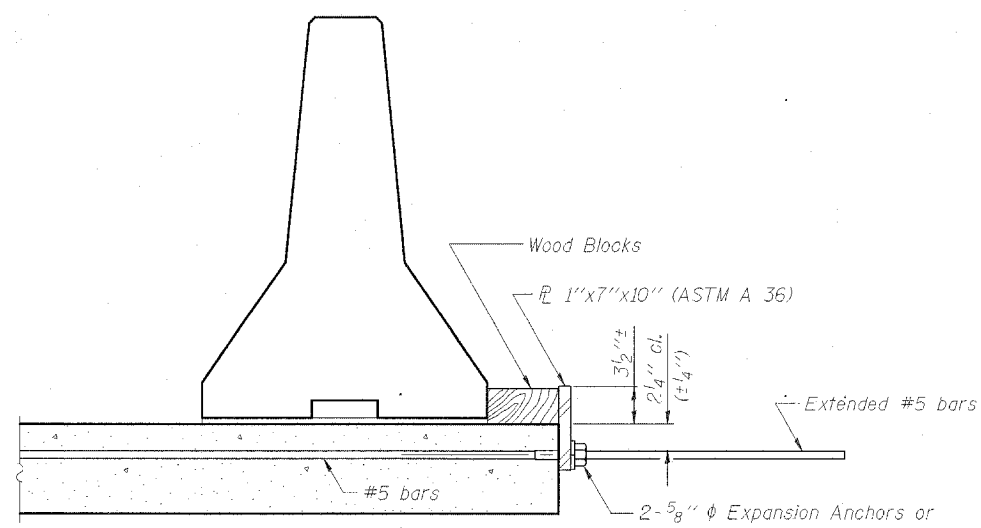


SECTIONS THRU SLAB



DETAIL I

The 1" x 7" x 10" Plate shall not be removed until Stage II Construction forms and reinforcement bars are in place.

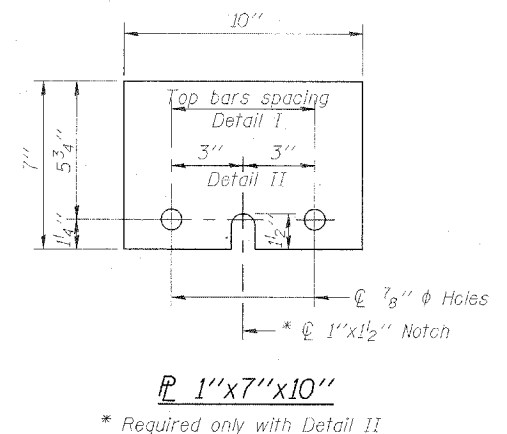


DETAIL II

The 1" x 7" x 10" Plate shall not be removed until Stage II Construction forms and all reinforcement bars are in place and the concrete is ready to be placed.

NOTES

- Detail I - With Bar Splicer or Couplers: Connect one (1) 1" x 7" x 10" steel \bar{L} to the top layer of couplers with 2-5/8" ϕ bolts screwed to coupler at approximate \bar{C} of each barrier panel.
 - Detail II - With Extended Reinforcement Bars: Connect one (1) 1" x 7" x 10" steel \bar{L} to the concrete slab with 2-5/8" ϕ Expansion Anchors or cast in place inserts spaced between the top layer of reinforcement at approximate \bar{C} of each barrier panel.
- Cost of anchorage is included with Temporary Concrete Barrier.



TEMPORARY CONCRETE BARRIER
FOR STAGE CONSTRUCTION

U.S. ROUTE 51 OVER
STEVE CREEK
F.A.P. ROUTE 322 - SECTION (24B)B-1
FAYETTE COUNTY
STATION 443+66.18
STRUCTURE NO. 026-2018

CHAMPAIGN, ILLINOIS
CHICAGO, ILLINOIS
INDIANAPOLIS, INDIANA
EVANSVILLE, INDIANA
KENOSHA, WISCONSIN
SPRING GREEN, WISCONSIN



REVISIONS		DRAWING NUMBER
NAME	DATE	
		S-5

NOTE: DIMENSIONAL DATA IS NOT TO BE OBTAINED BY SCALING ANY PORTION OF THIS DRAWING.

DESIGNED BY: S.M.M.	PROJECT NO: 102286
DRAWN BY: M.E.W.	DATE: 4-05
CHECKED BY: M.M.	
APPROVED BY: S.C.J.	
ACTIVITY: INITIALS	