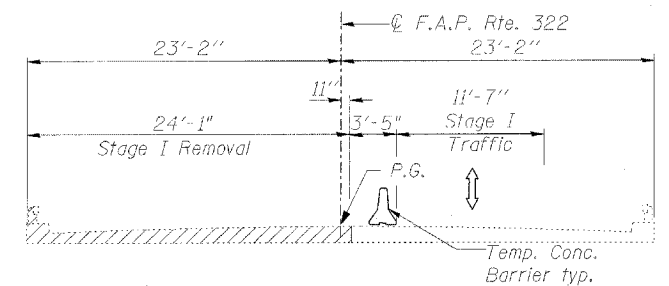
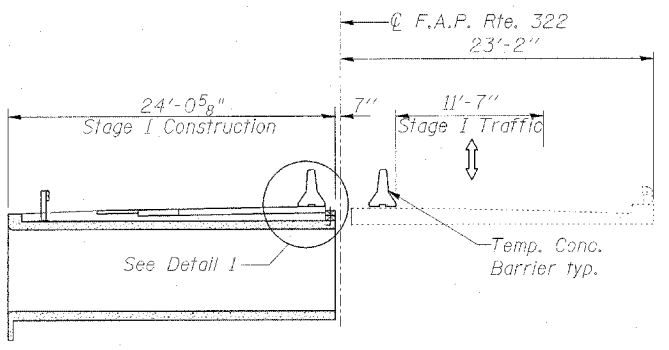


Contract #94778

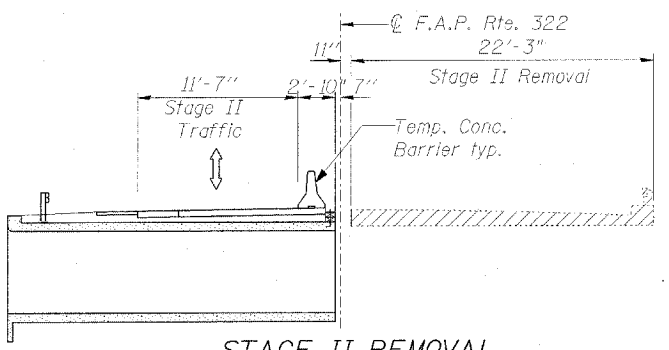


**STAGE I REMOVAL**

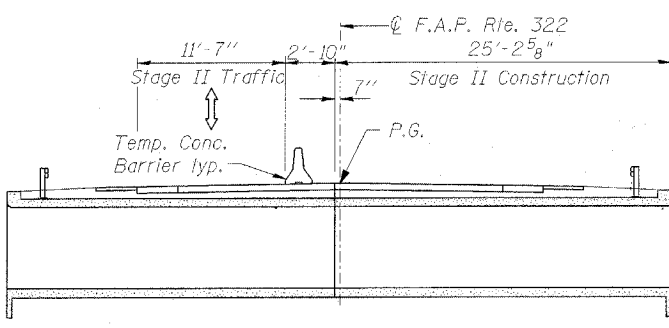
(Horiz. dim. @ Rt. L's to Rdwy.)  
(Looking South)



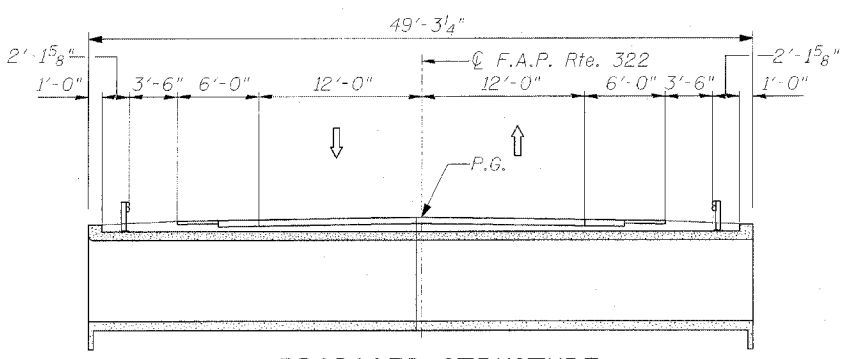
**STAGE I CONSTRUCTION**



**STAGE II REMOVAL**

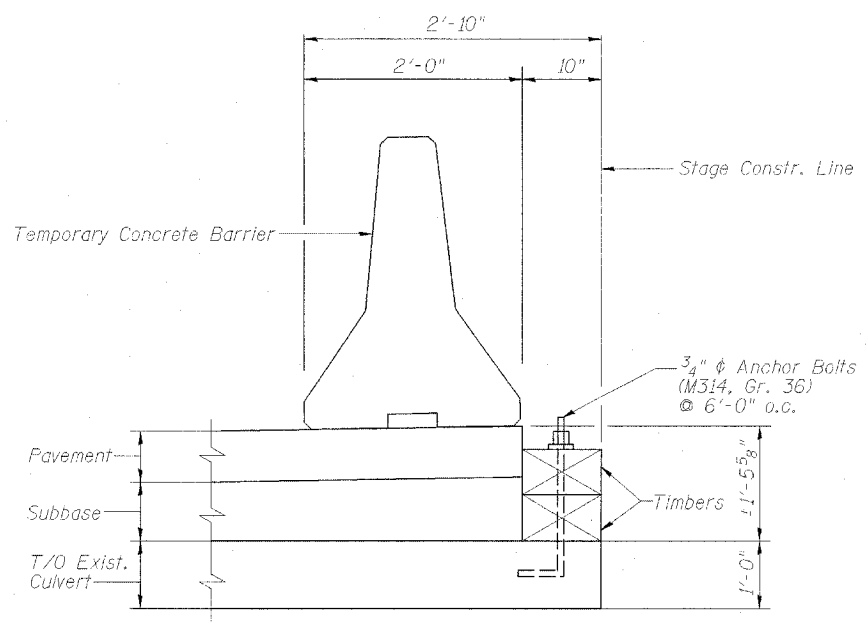


**STAGE II CONSTRUCTION**



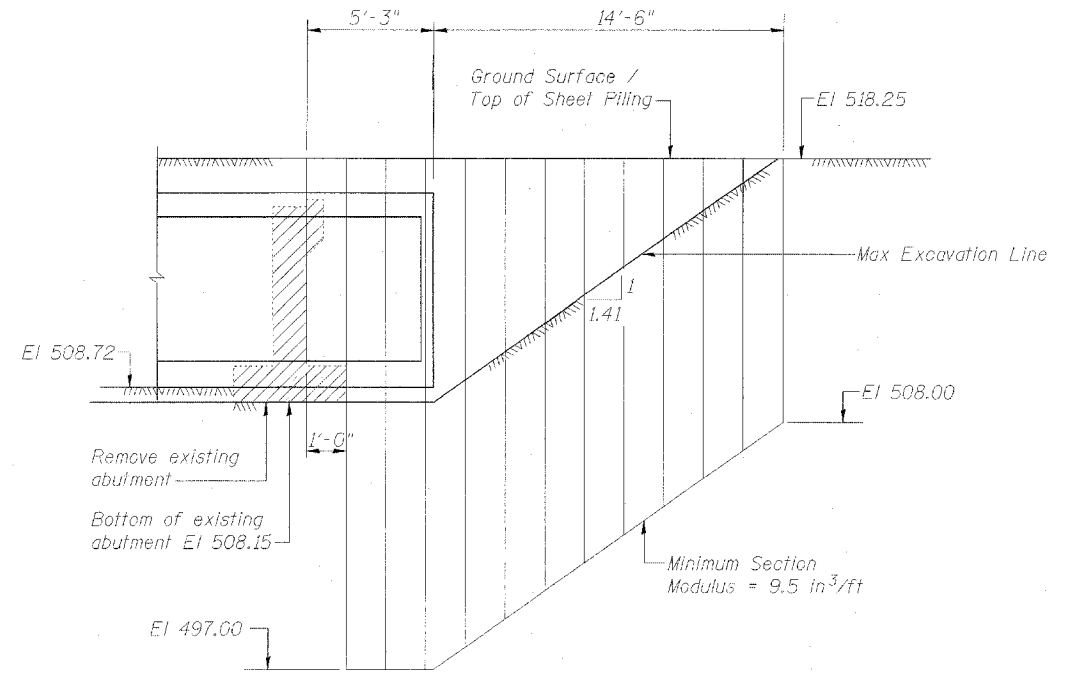
**PROPOSED STRUCTURE**

(Horiz. dim. @ Rt. L's to Rdwy.)  
(Looking South)



**DETAIL 1**

- Notes**
- The Contractor shall remove timbers and cut the anchor bolts after Stage II deck slab has been poured and cured. Cost of installing and removing anchor bolts and timbers are included in "Concrete Box Culverts".
  - For anchoring Temporary Concrete Barriers see Roadway Drawings.
  - The cost of 3/4" diameter Anchor Bolts shall be included with Concrete Box Culverts.



**TEMPORARY SHEET PILING AND CONCRETE REMOVAL DETAILS**

Slopes and distances shown along alignment of sheeting (with 45° skew)

- NOTES:**
- If the Contractor chooses to alter the temporary cantilevered sheet piling design requirements shown on the plans, a design submittal including plan details and calculations will be required for review and acceptance by the Engineer.
  - The Contractor shall connect the first sheet to the existing abutment wall to ensure stability of sheets driven to the top of the existing footing. This connection shall be reviewed and accepted by the Engineer and included in the cost for Temporary Sheet Piling.

**STAGE CONSTRUCTION**

U.S. ROUTE 51 OVER  
STEVE CREEK  
F.A.P. ROUTE 322 - SECTION (24B)B-1  
FAYETTE COUNTY  
STATION 443+66.18  
STRUCTURE NO. 026-2018

CHAMPAIGN, ILLINOIS  
CHICAGO, ILLINOIS  
INDIANAPOLIS, INDIANA  
EVANSVILLE, INDIANA  
KENOSHA, WISCONSIN  
SPRING GREEN, WISCONSIN

REVISIONS		DRAWING NUMBER
NAME	DATE	
		S-2

NOTE: DIMENSIONAL DATA IS NOT TO BE OBTAINED BY SCALING ANY PORTION OF THIS DRAWING.

DESIGNED BY: S.M.M. PROJECT NO: 102366  
DRAWN BY: M.E.W. DATE: 4-05  
CHECKED BY: M.H.  
APPROVED BY: S.C.J.  
ACTIVITY INITIALS