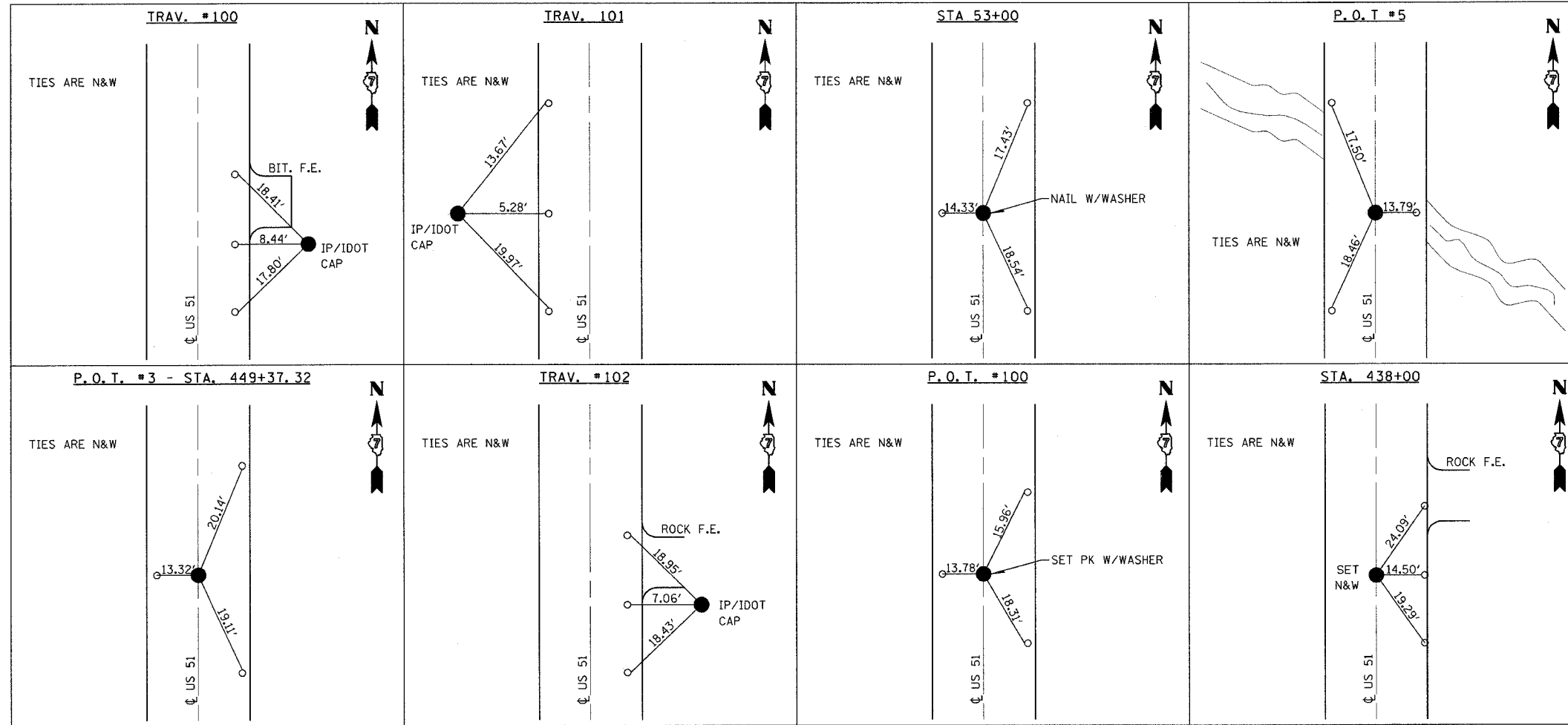


F.A.P. RTE.	SECTION	COUNTY	TOTAL SHEETS	SHEET NO.
322	(24B)B-1	FAYETTE	22	6
STA.		TO STA.		
FED. ROAD DIST. NO.		ILLINOIS	FED. AID PROJECT	

teasleyck
12/22/2005
c:\projects\94778\04899pa.dgn
TIES



- BM #200 - RAILROAD SPIKE IN POWERPOLE. STA. 444+37, 215' RT. ELEV 521.89
- BM J 256 - BRASS CAP ON TOP OF N.E. WINGWALL ON BRIDGE AT STA. 443+66.18 OVER STEVES CREEK STA 443+77.5, 25.0 LT. ELEV 518.26
- BM #201 - CHISELED SQUARE ON E. END OF ARC CULVERT STA. 435+88, 33' LT. ELEV 517.24

NUMBER OF TURNS REQUIRED IN DETECTOR LOOPS														
5 X 5		6 X 6		6 X 15		6 X 30		6 X 35		6 X 40		6 X 50		LOOP SIZE
FROM	TO	FROM	TO	FROM	TO	FROM	TO	FROM	TO	FROM	TO	FROM	TO	
				0	545	0	491	0	559	0	627	0	764	2 TURNS
0	681	0	545	574	955	492	982	560	1118	628	1255	765	1527	3 TURNS
682	954	546	818	956	1432	983	1636	1119	1864	1256	2091	1528	2545	4 TURNS
955	1272	819	1145	1433	2005	1637	2455	1865	2795	2092	3136	2546	3818	5 TURNS
1273	1636	1146	1527	2006	2673	2456	3436	2796	3914					6 TURNS
1637	2045	1528	1964	2674	3436									7 TURNS
2046	2499	1965	2455											8 TURNS
		2456	3000											9 TURNS
														10 TURNS

THE NUMBERS IN THE TABLE REPRESENT THE DISTANCE FROM THE CABINET TO THE DETECTOR LOOP IN FEET

REVISIONS	
NAME	DATE

ILLINOIS DEPARTMENT OF TRANSPORTATION
**BENCHMARKS,
ALIGNMENT TIES
& DETECTOR LOOPS**
SCALE: VERT. HORIZ.
DATE: DRAWN BY: CHECKED BY:

PLOT DATE = 12/22/2005
FILE NAME = c:\projects\94778\04899pa.dgn
PLOT SCALE = 28.8000 / IN.
USER NAME = teasleyck