

district
12/22/2005
c:\projects\94778\104899pa.dgn

PROJECT ENGINEER : BILL STANLEY
SQUAD LEADER : MYRA OLTMAN
DESIGNER : MYRA OLTMAN
TELEPHONE : 217/342-3951 EX 314

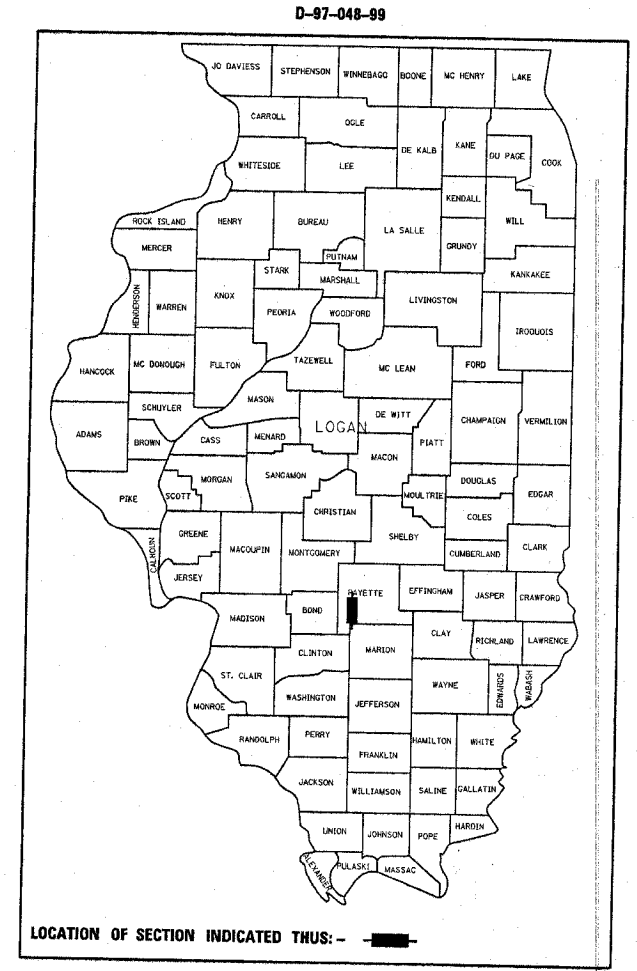
F.A.P. RTE.	SECTION	COUNTY	TOTAL SHEETS	SHEET NO.
322	(24B)B-1	FAYETTE	22	1

STATE OF ILLINOIS
DEPARTMENT OF TRANSPORTATION
DIVISION OF HIGHWAYS

**PROPOSED
HIGHWAY PLANS**

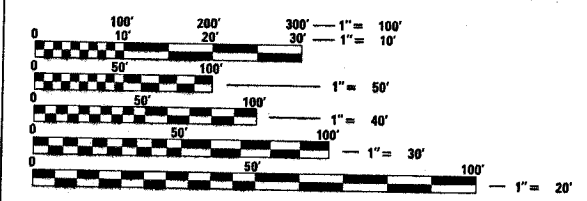
FAP ROUTE 322 (US RTE 51)
SECTION (24B)B-1
~~PROJECT BR-322~~
FAYETTE COUNTY

FOR INDEX OF SHEETS, SEE SHEET NO. 2



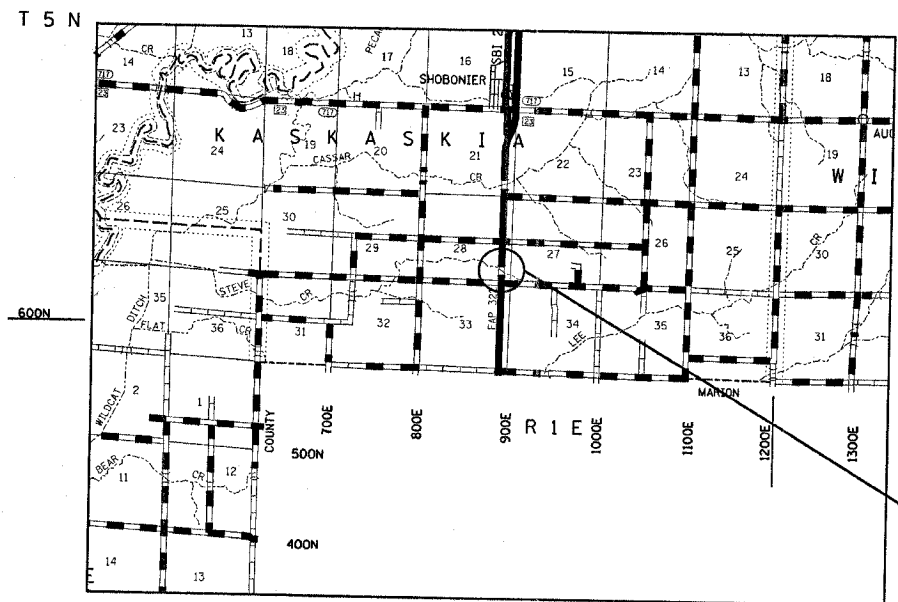
C-97-078-03

ADT (2003) - 3250



FULL SIZE PLANS HAVE BEEN PREPARED USING STANDARD ENGINEERING SCALES. REDUCED SIZED PLANS WILL NOT CONFORM TO STANDARD SCALES. IN MAKING MEASUREMENTS ON REDUCED PLANS, THE ABOVE SCALES MAY BE USED.

J.U.L.I.E.
JOINT UTILITY LOCATION INFORMATION FOR EXCAVATION
1-800-892-0123



FAP ROUTE 322
SECTION (24B)B-1
STR# 026-2018
STATION 443+66.18
FAYETTE COUNTY

GROSS LENGTH = 699 FEET = 0.13 MILES
NET LENGTH = 120.5 FEET = 0.02 MILES

CONTRACT NO. 94778 TOWNSHIP : KASKASKIA

STATE OF ILLINOIS
DEPARTMENT OF TRANSPORTATION
DIVISION OF HIGHWAYS

SUBMITTED DEC. 27, 20 05
Chris H. Reed
DEPUTY DIRECTOR OF HIGHWAYS, REGION ENGINEER

February 3, 2006
Mike Hine
ENGINEER OF DESIGN AND ENVIRONMENT

February 3, 2006
Milton R. Sees, P.E.
DIRECTOR OF HIGHWAYS, CHIEF ENGINEER

**PRINTED BY THE AUTHORITY
OF THE STATE OF ILLINOIS**