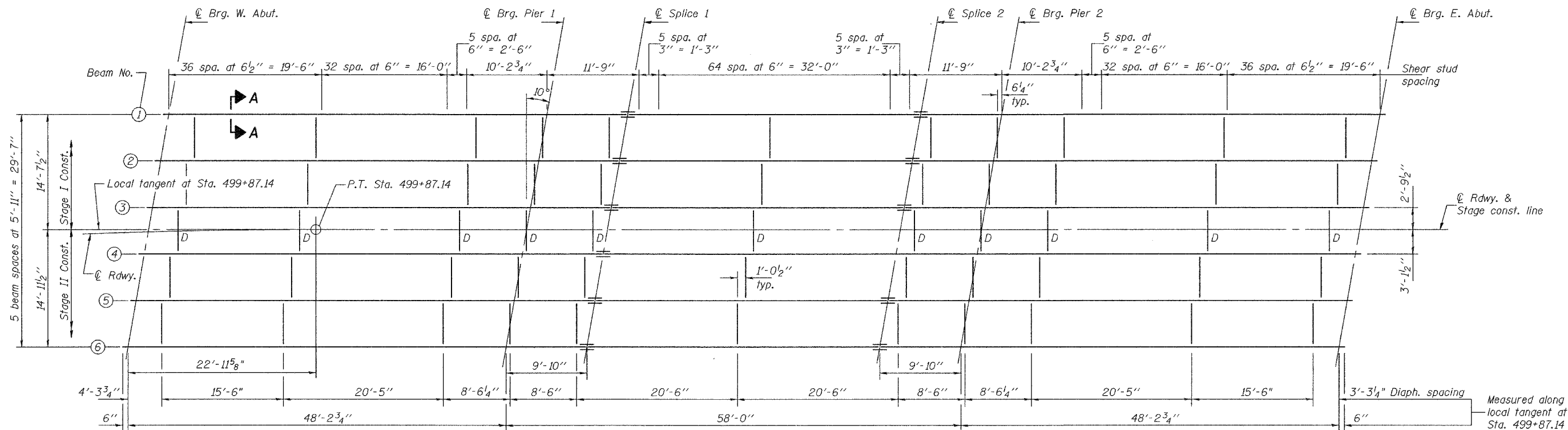


STATE OF ILLINOIS
DEPARTMENT OF TRANSPORTATION

| | | | | |
|-----------------------|----------|-------------------|-----------|-------|
| ROUTE NO. | SECTION | COUNTY | SHEET NO. | SHEET |
| FAP 777 | 10B-1 | MONTGOMERY | 104 | 64 |
| FED. ROAD DIST. NO. 7 | ILLINOIS | FED. AID PROJECT- | | |

SHEET NO. 12
23 SHEETS

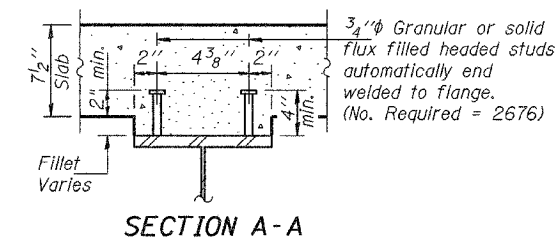
Contract #92667



FRAMING PLAN

All beams are W21x93 AASHTO M 270 Grade 50W "NTR"

** Use 1/16" x 1 1/2" vertical slotted holes in connection angles 6 x 4 x 1/2 at North side of Beam 4 only. Provide 5/16" plate washers for slotted holes. Bolts for the slotted holes shall be finger-tightened prior to the deck pour for Stage II Construction and then be fully tightened after completion of the deck pour for Stage II Construction.
*** M270 Grade 50W.



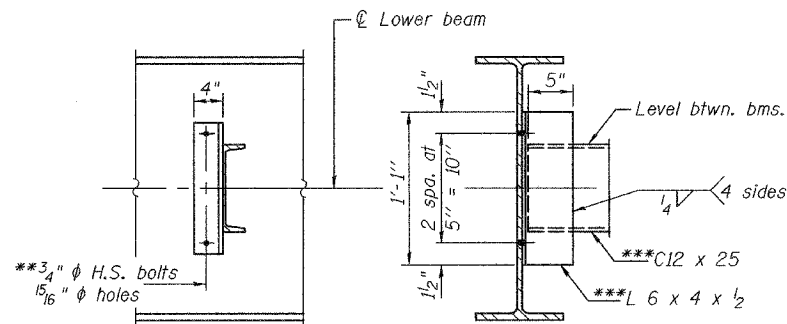
SECTION A-A

*** TOP OF BEAM ELEVATIONS**

| Location | ℄ Brg. W. Abut. | ℄ Brg. Pier 1 | ℄ Splice 1 | ℄ Splice 2 | ℄ Brg. Pier 2 | ℄ Brg. E. Abut. |
|----------|-----------------|---------------|------------|------------|---------------|-----------------|
| Beam 1 | 562.06 | 561.81 | 561.76 | 561.81 | 561.89 | 562.28 |
| Beam 2 | 561.79 | 561.64 | 561.61 | 561.73 | 561.82 | 562.31 |
| Beam 3 | 561.52 | 561.46 | 561.45 | 561.63 | 561.75 | 562.32 |
| Beam 4 | 561.25 | 561.27 | 561.28 | 561.53 | 561.66 | 562.27 |
| Beam 5 | 560.97 | 561.08 | 561.11 | 561.43 | 561.56 | 562.16 |
| Beam 6 | 560.68 | 560.89 | 560.93 | 561.31 | 561.44 | 562.04 |

* For fabrication only.

Notes: "NTR" denotes members to which Notch Toughness Requirements are applicable.
Two hardened washers shall be required over all oversized holes in diaphragms.
For remainder of structural steel details see sheet 13 of 23.



DIAPHRAGM D

55 Required

| | |
|----------|--------------------|
| DESIGNED | Daniel F. Zerrusen |
| CHECKED | Stephen M. Ryan |
| DRAWN | R. Doty h.t.duong |
| CHECKED | DFZ/SMR |

| | | |
|----------|--------------------|-------------|
| EXAMINED | Thomas J. Donagale | Feb 3, 2006 |
| PASSED | Ralph E. Anderson | |

STRUCTURAL STEEL
F.A.P. ROUTE 777 SECTION 10B-1
MONTGOMERY COUNTY
STATION 500+44.04
STRUCTURE NO. 068-0505