

STATE OF ILLINOIS  
DEPARTMENT OF TRANSPORTATION

ROUTE NO.	SECTION	COUNTY	JOB NO.	SHEET	SHEET NO. 8 23 SHEETS
FAP 777	10B-1	MONTGOMERY	10A	60	
FED. ROAD DIST. NO. 7	ILLINOIS	FED. AID PROJECT-			

Contract #92667

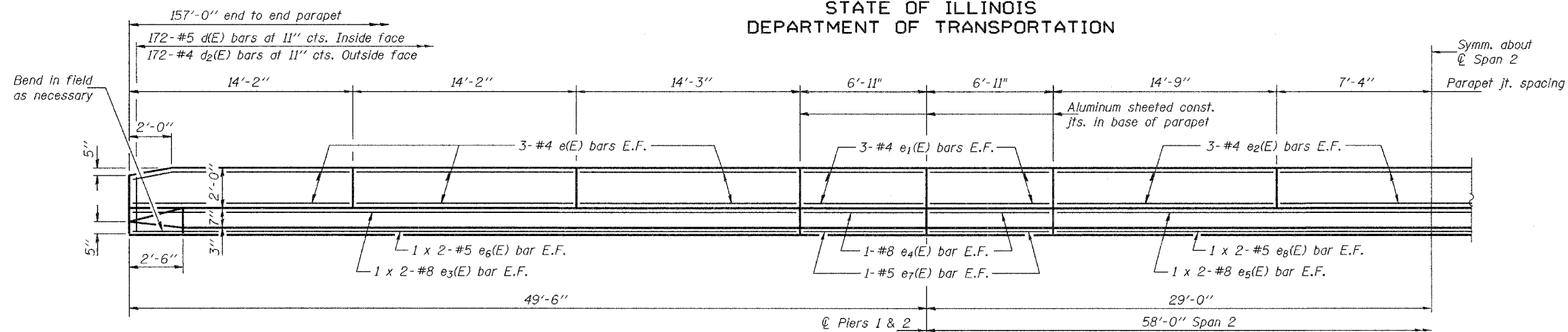
**MIN. BAR LAPS**

#5 bar = 1'-8"  
#8 bar = 3'-5"

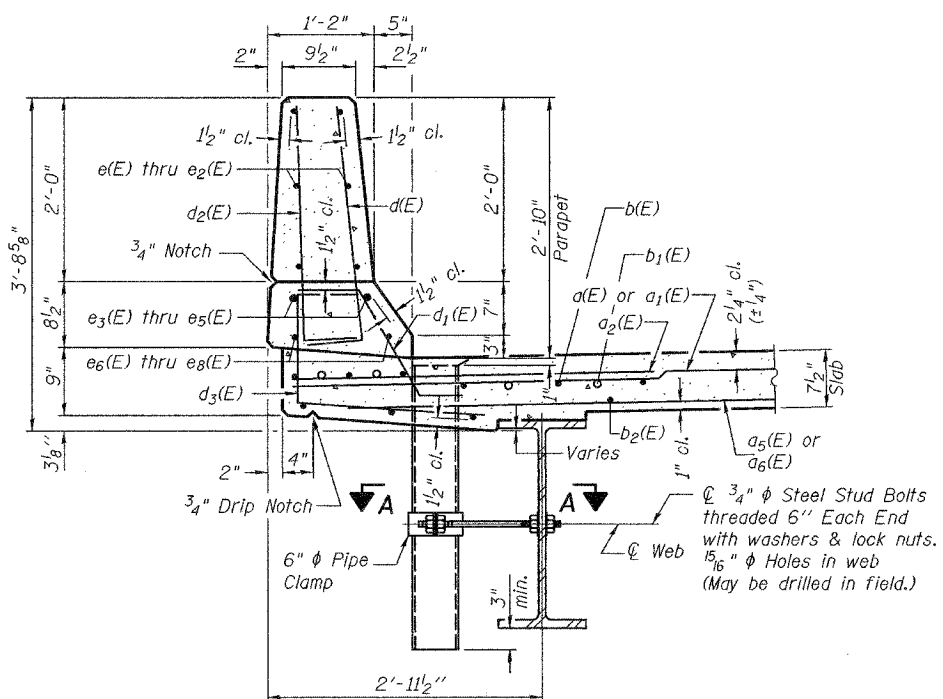
**SUPERSTRUCTURE  
BILL OF MATERIAL**

Bar	No.	Size	Length	Shape
d(E)	247	#5	17'-2"	—
d <sub>1</sub> (E)	247	#5	17'-6"	—
d <sub>2</sub> (E)	248	#6	4'-6"	—
d <sub>3</sub> (E)	4	#5	16'-9"	—
d <sub>4</sub> (E)	4	#5	17'-1"	—
d <sub>5</sub> (E)	186	#5	16'-5"	—
d <sub>6</sub> (E)	186	#5	16'-9"	—
d <sub>7</sub> (E)	16	#5	1'-6"	—
b(E)	190	#5	33'-0"	—
b <sub>1</sub> (E)	68	#6	27'-0"	—
b <sub>2</sub> (E)	192	#5	27'-9"	—
d(E)	344	#5	3'-0"	—
d <sub>1</sub> (E)	332	#5	2'-5"	—
d <sub>2</sub> (E)	344	#4	3'-0"	—
d <sub>3</sub> (E)	344	#4	3'-11"	—
d <sub>4</sub> (E)	12	#5	2'-4"	—
e(E)	72	#4	13'-11"	—
e <sub>1</sub> (E)	48	#4	6'-8"	—
e <sub>2</sub> (E)	36	#4	14'-6"	—
e <sub>3</sub> (E)	16	#8	22'-10"	—
e <sub>4</sub> (E)	16	#8	6'-7"	—
e <sub>5</sub> (E)	8	#8	23'-8"	—
e <sub>6</sub> (E)	16	#5	22'-0"	—
e <sub>7</sub> (E)	16	#5	6'-7"	—
e <sub>8</sub> (E)	8	#5	22'-10"	—
m(E)	4	#6	16'-10"	—
m <sub>1</sub> (E)	4	#6	17'-2"	—
m <sub>2</sub> (E)	6	#6	17'-7"	—
m <sub>3</sub> (E)	6	#6	17'-11"	—
m <sub>4</sub> (E)	24	#6	7'-10"	—
m <sub>5</sub> (E)	10	#6	5'-9"	—
m <sub>6</sub> (E)	4	#6	2'-9"	—
s(E)	64	#5	5'-9"	—
s <sub>1</sub> (E)	64	#4	7'-8"	—
v(E)	68	#5	3'-0"	—
Reinforcement Bars, Epoxy Coated	Pound		41090	
Concrete Superstructure	Cu. Yd.		186.3	

Reinforcement bars designated (E) shall be epoxy coated.  
Bars indicated thus 1 x 2-#5 etc. indicates 1 line of bars with 2 lengths per line.

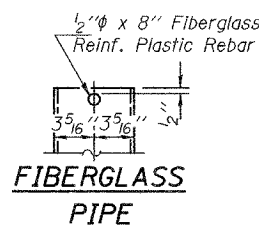


**INSIDE ELEVATION OF PARAPET**

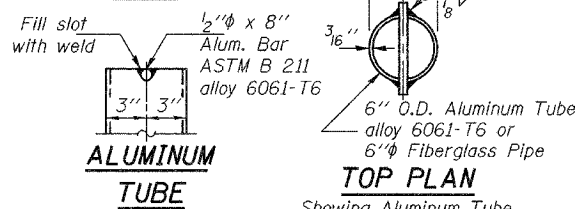


**SECTION THRU PARAPET**

Omit drains on N. parapet



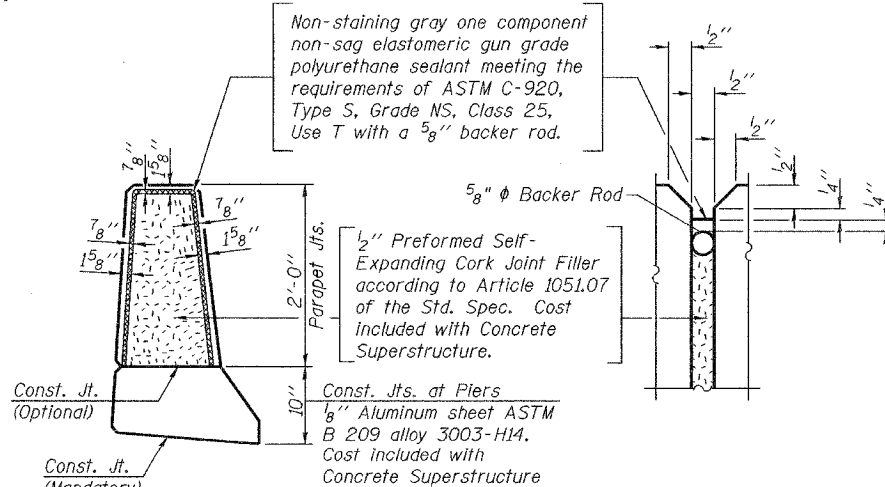
**FIBERGLASS  
PIPE**



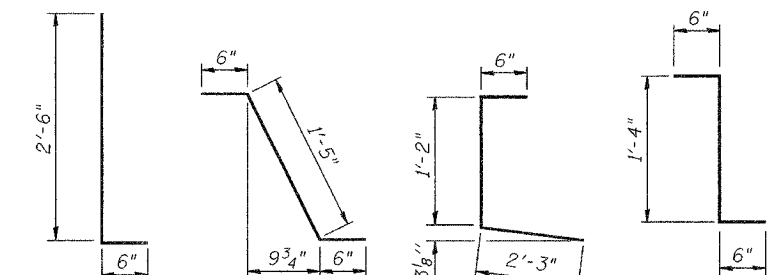
**ALUMINUM  
TUBE**

**TOP PLAN**  
Showing Aluminum Tube

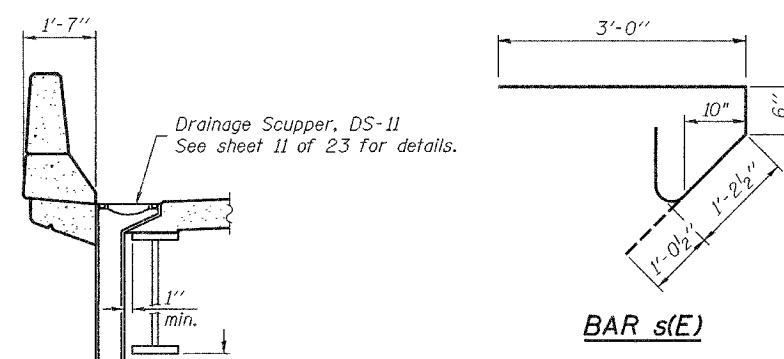
Non-staining gray one component non-sag elastomeric gun grade polyurethane sealant meeting the requirements of ASTM C-920, Type S, Grade NS, Class 25, Use T with a 5/8" backer rod.



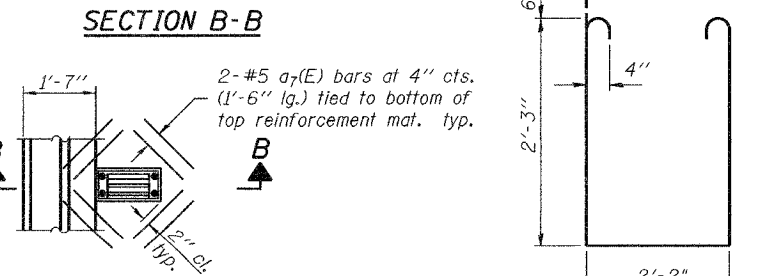
**PARAPET JOINT DETAILS**



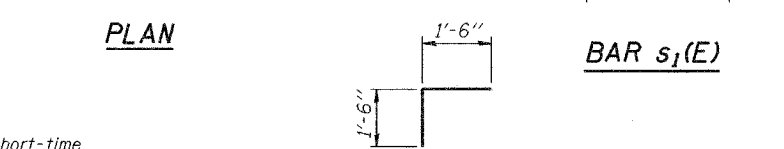
**BARS d(E) & d2(E)**    **BAR d1(E)**    **BAR d3(E)**    **BAR d4(E)**



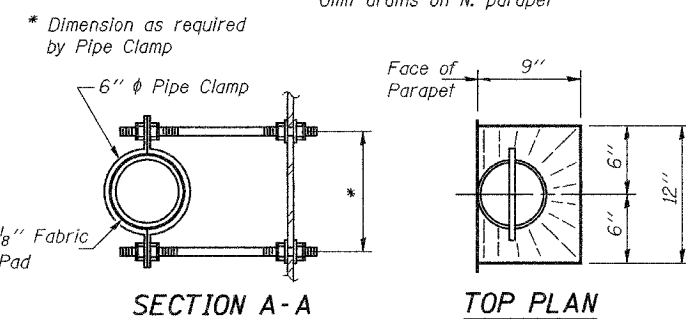
**BAR s(E)**



**BAR s1(E)**



**BAR v(E)**



**SECTION A-A**

**TOP PLAN**

DESIGNED Daniel F. Zerrusen	EXAMINED Thomas J. Domagala
CHECKED Stephen M. Ryan	PASSED Ralph E. Anderson
DRAWN R. Doty	
CHECKED DFZ/SMR	

Notes:  
Fiberglass pipe shall conform to ASTM D2996, with short-time rupture strength hoop tensile stress of 30,000 p.s.i. minimum.  
Floor drains need not be painted.

**SUPERSTRUCTURE DETAILS**  
F.A.P. ROUTE 777 SECTION 10B-1  
MONTGOMERY COUNTY  
STATION 500+44.04  
STRUCTURE NO. 068-0505