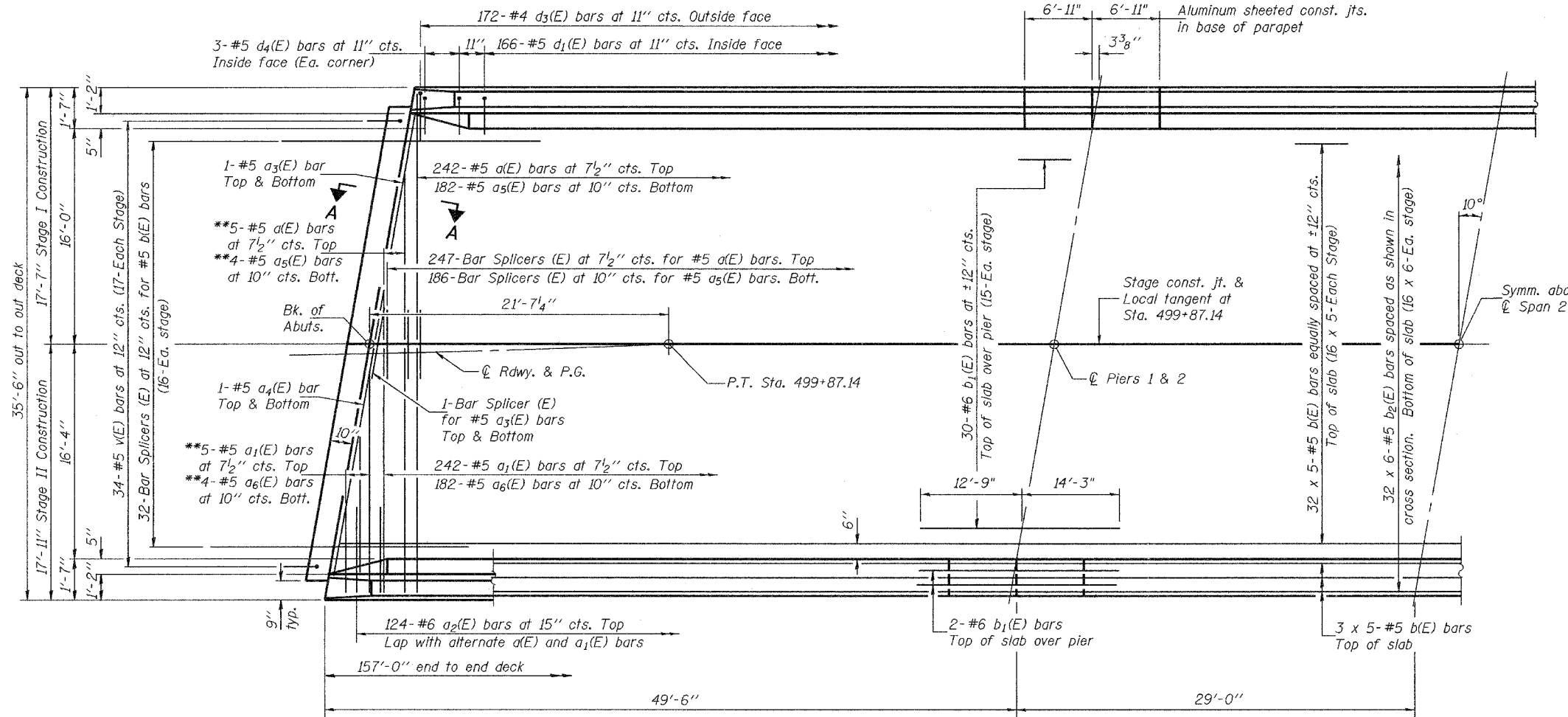


STATE OF ILLINOIS
DEPARTMENT OF TRANSPORTATION

ROUTE NO.	SECTION	COUNTY	TOTAL SHEETS	SHEET NO.	SHEET NO. 7 23 SHEETS
FAP 777	10B-1	MONTGOMERY	164	59	
FED. ROAD DIST. NO. 7	ILLINOIS	FED. AID PROJECT			

Contract #92667



Notes: See sheet 8 of 23 for superstructure details, parapet reinforcement and Bill of Material. For Section A-A and diaphragm details see sheets 9 and 10 of 23. Reinforcement bars designated (E) shall be epoxy coated. Bars indicated thus 3 x 5-#5 etc. indicates 3 lines of bars with 5 lengths per line. See sheet 20 of 23 for bar splicer details. For location of floor drains and drainage scuppers see sheet 1 of 23. Cut longitudinal reinforcement, where necessary, to clear drainage scuppers.

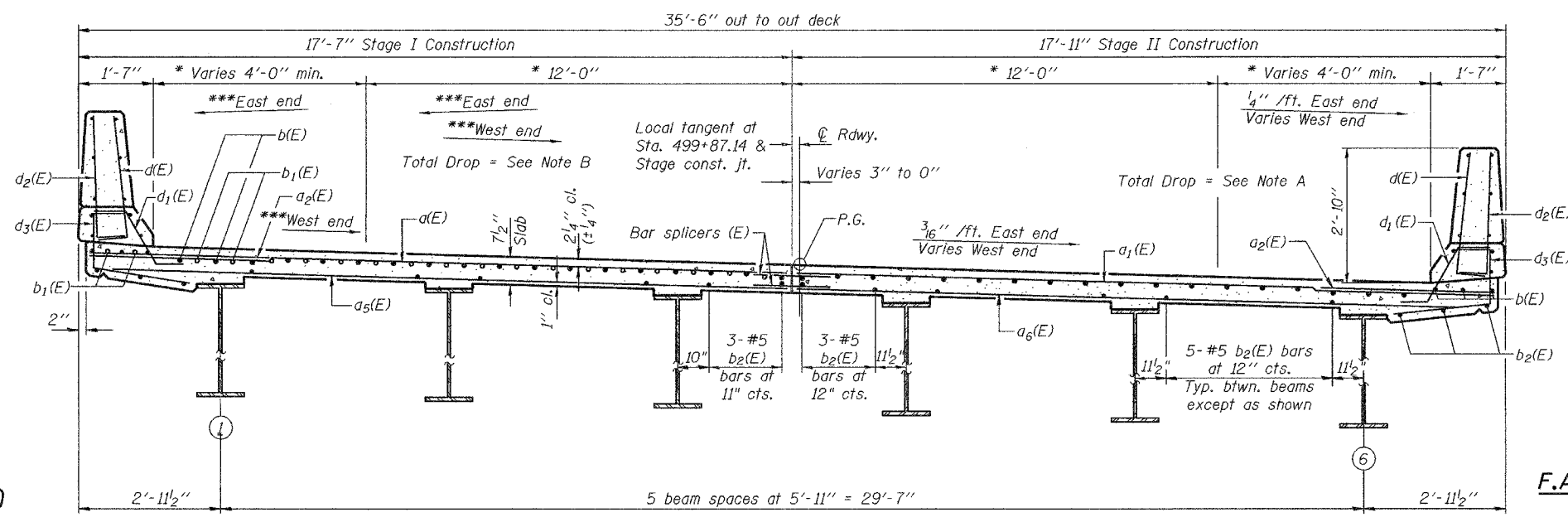
Note A: Total drop from ϕ roadway and PG to gutter line = 9⁷/₈" (West end); 3³/₈" (East end)
 Note B: Total drop from gutter line to ϕ roadway and PG = 8⁷/₈" (West end)
 Total drop from ϕ roadway and PG to gutter line = 1¹/₈" (East end)

HALF PLAN

MIN. BAR LAP

#5 bars = 1'-8"

* Radial dimensions.
 ** Order a(E), a₁(E), a₅(E), and a₆(E) bars full length. Cut to fit skew and use the remainder of bars in opposite end.
 *** Slope varies.



CROSS SECTION
(Looking East)

DESIGNED	Daniel F. Zerrusen
CHECKED	Stephen M. Ryan
DRAWN	R. Doty h.t. duong
CHECKED	DFZ/SMR

Feb 3, 2006
 EXAMINED *Thomas J. Donagale*
 PASSED *Ralph E. Anderson*
 ENGINEER OF BRIDGE DESIGN
 ENGINEER OF BRIDGES AND STRUCTURES

SUPERSTRUCTURE
F.A.P. ROUTE 777 SECTION 10B-1
MONTGOMERY COUNTY
STATION 500+44.04
STRUCTURE NO. 068-0505