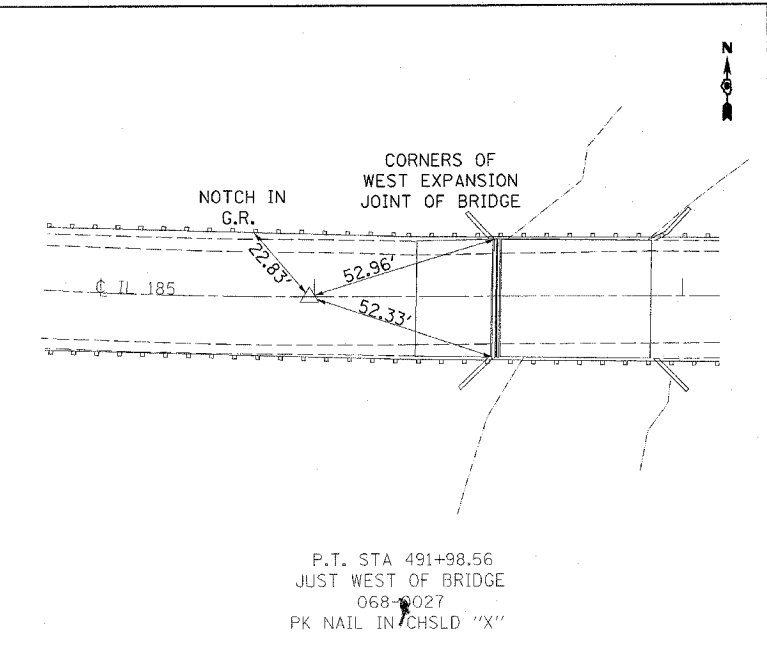
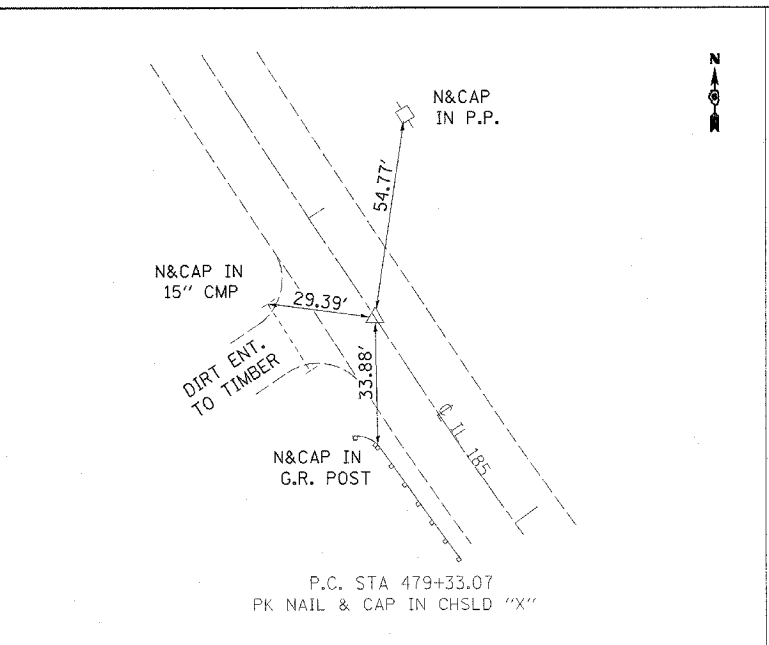
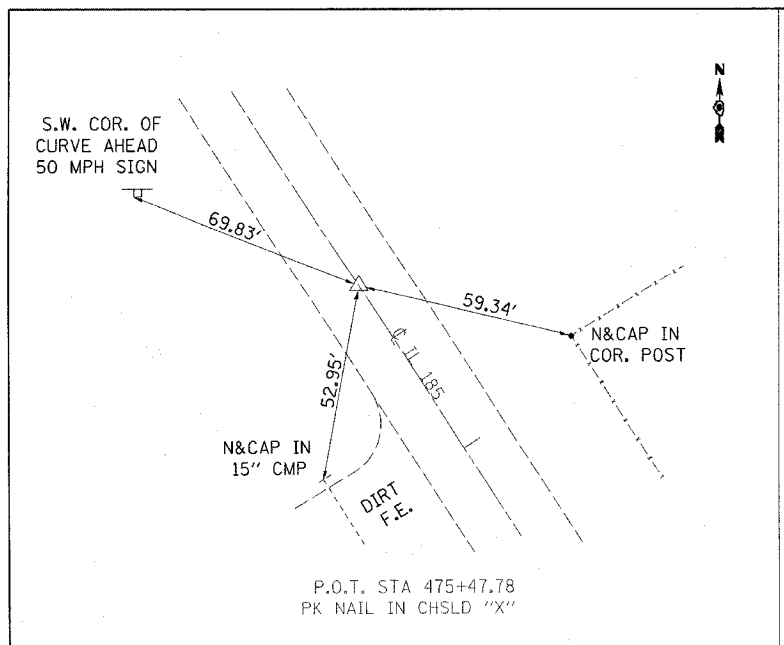
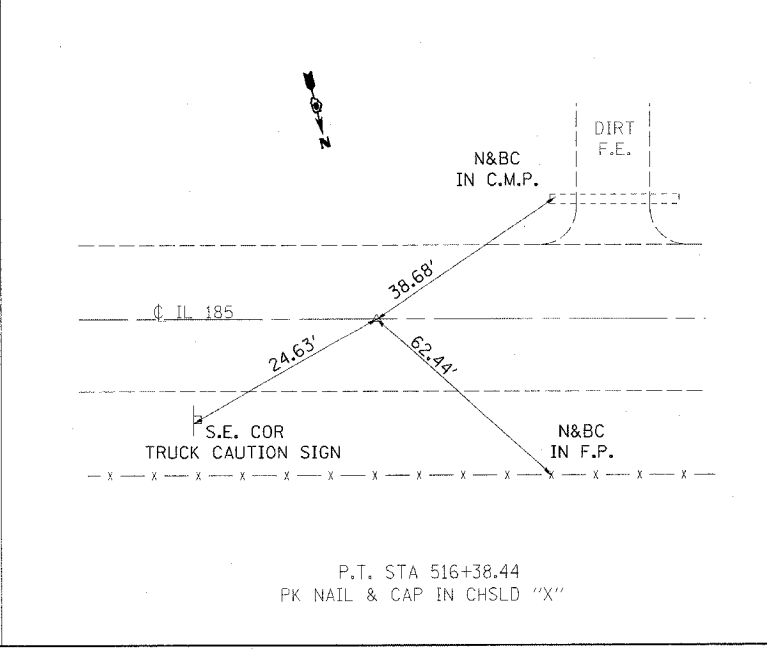
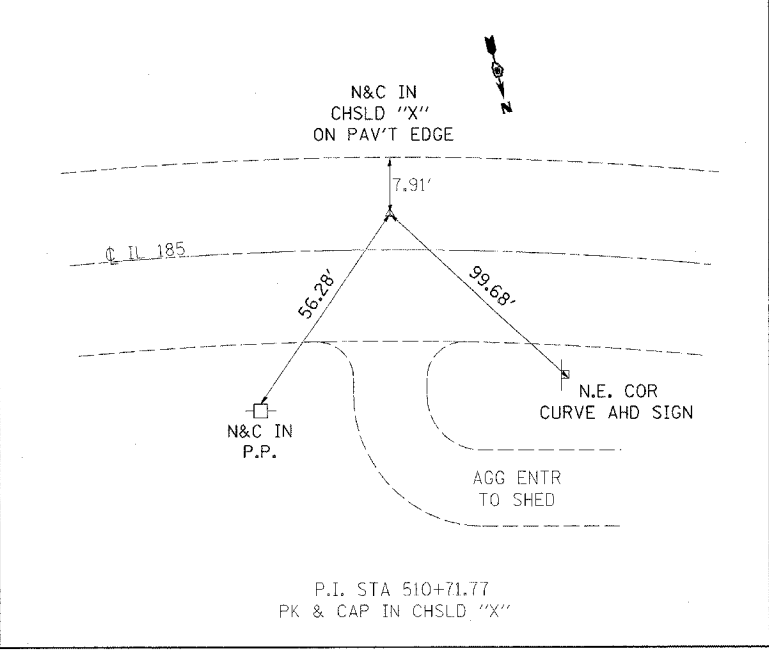
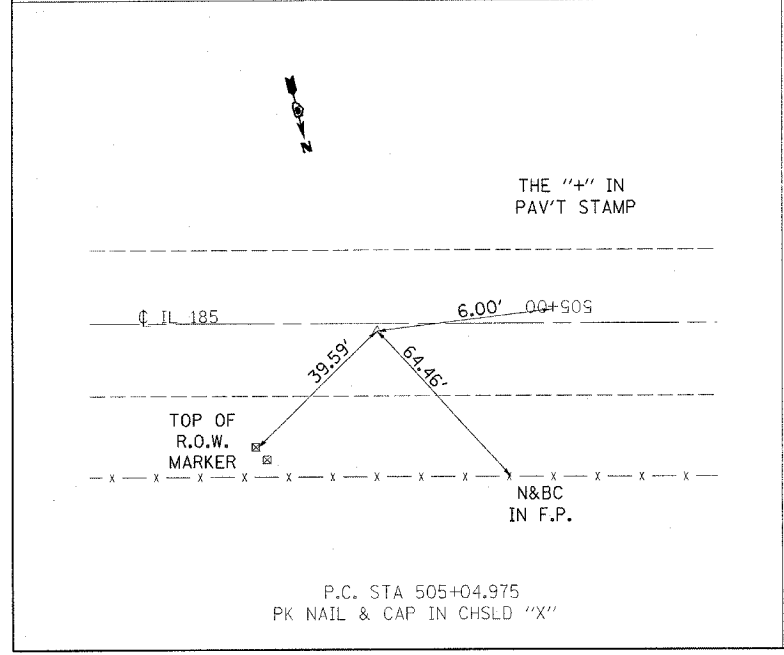
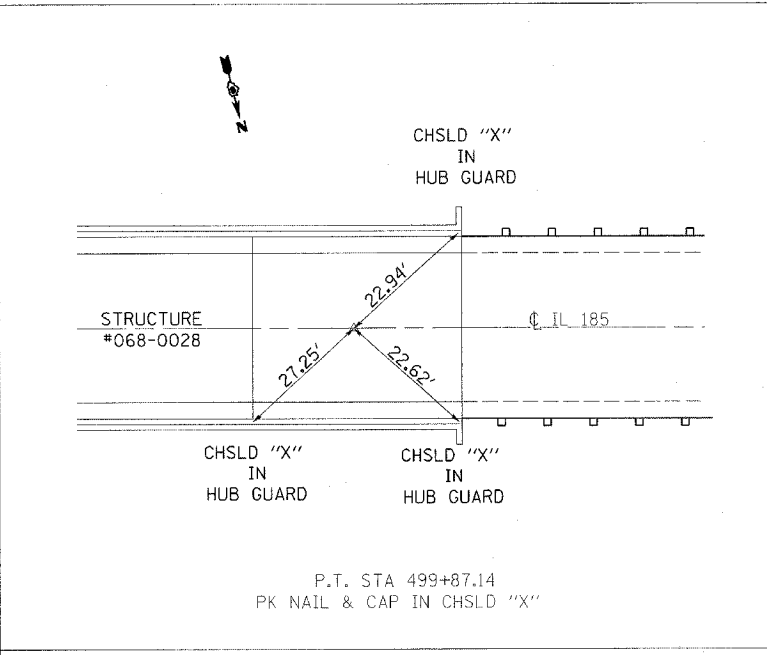
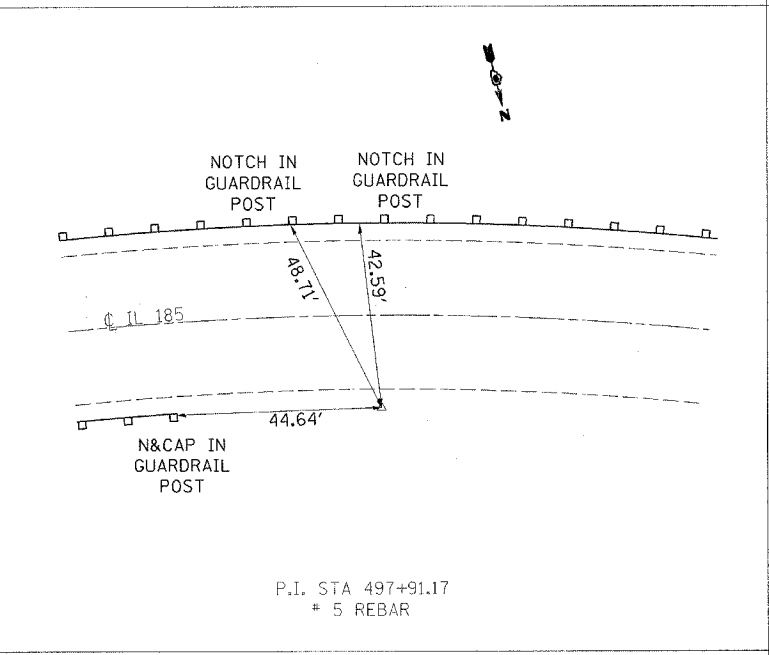
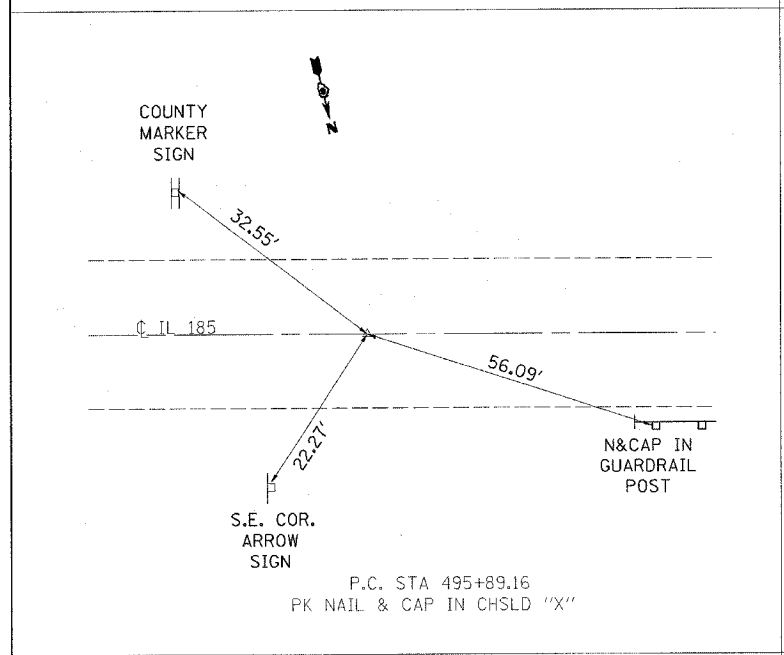


F.A.P. RTE.	SECTION	COUNTY	TOTAL SHEETS	SHEET NO.
177	10(B-18A-2)	MONTEGOMERY	104	23
STA.		TO STA.		
FED. ROAD DIST. NO.		ILLINOIS FED. AID PROJECT		



BENCHMARKS:

- B.M. #16
ON S.W. ABUT. BRIDGE @ 499+79.25 RT
WOODERT SURVEY BOOK #9 PG 16.
STA 499+78.5; 23.4' RT ELEV 561.26 (9/5/01)
- B.M. KS#10:
A 60D NAIL IN P.P. @ S.E. COR. OF
INT. OF IL-185 & BATICE RD.
@ STA 509+89.09; 65.56' RT
NAVD'29 ELEV 609.155
- B.M. KS#11:
A PK NAIL SET IN TOP OF
GUARD RAIL POST ON NORTH SIDE OF
IL-185 & JUST WEST OF 18TH RD.
@ STA 493+33.31; 16.35' LT
NAVD'29 ELEV 563.714



NOT TO SCALE

REVISIONS	
NAME	DATE

ILLINOIS DEPARTMENT OF TRANSPORTATION
CROSS TIES AND BENCHMARKS

SCALE:
DATE

DRAWN BY : CAD-mg
CHECKED BY

•CON-SPEC*
•DATE-TIME*
•REF#1