

92667
+1
= 105

FAP RTE.	SECTION	COUNTY	TOTAL SHEETS	SHEET NO.
777	10(B-1, BR-2)	MONTGOMERY	104	1

STATE OF ILLINOIS
DEPARTMENT OF TRANSPORTATION

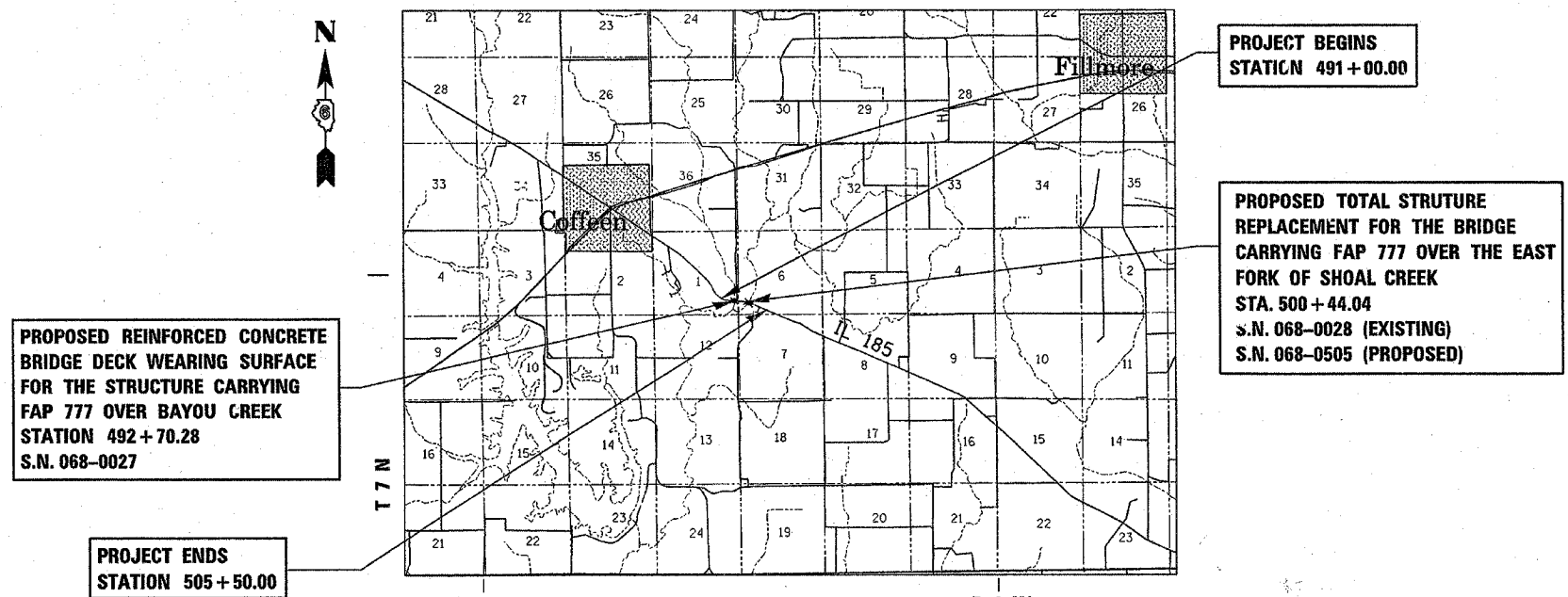
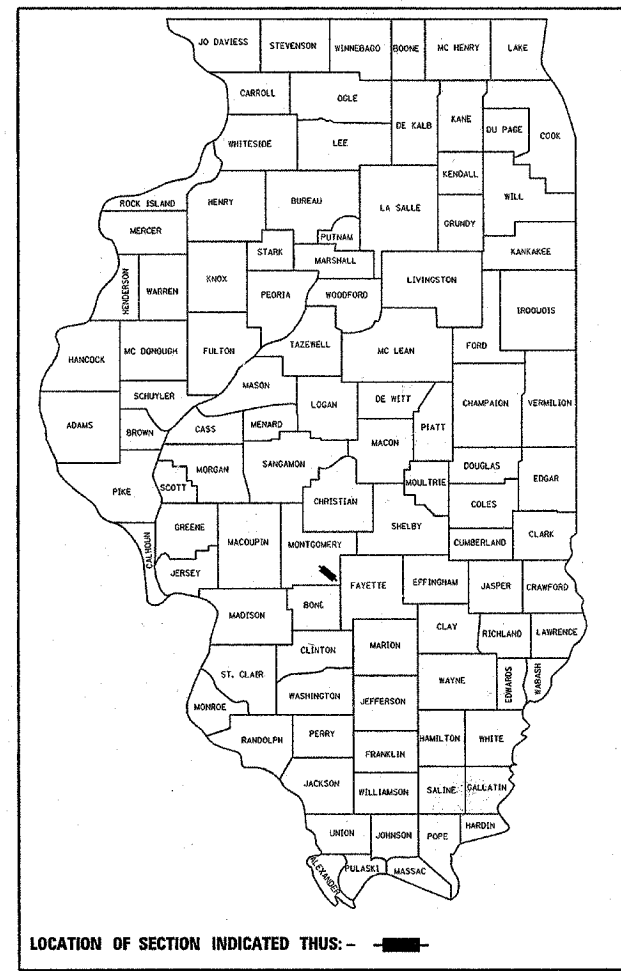
DIVISION OF HIGHWAYS

**PROPOSED
HIGHWAY PLANS**

FAP ROUTE 777 (IL 185)
SECTION 10(B-1, BR-2)
PROJECT # *F-BRF-0777(013)*
1.3 MILES SOUTHEAST OF COFFEEN
STRUCTURE REPLACEMENT & REHABILITATION
MONTGOMERY COUNTY
C-96-543-96

FOR INDEX OF SHEETS
AND HIGHWAY STANDARDS,
SEE SHEET 2.

D-96-536-94

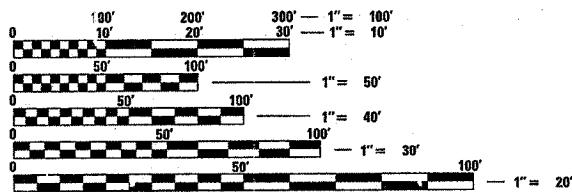


LOCATION MAP



TOTAL LENGTH OF PROJECT = 1450.00 FEET = 0.275 MILES
HIGHWAY CLASSIFICATION = MINOR ARTERIAL (RURAL)

IL RTE. 185 ADT = 1700 (2003)
IL RTE. 185 ADT = 2000 (2023)
T.R. 318 ADT = 175 (2002)
T.R. 318 ADT = 175 (2005)



FULL SIZE PLANS HAVE BEEN PREPARED USING STANDARD ENGINEERING SCALES. REDUCED SIZED PLANS WILL NOT CONFORM TO STANDARD SCALES. IN MAKING MEASUREMENTS ON REDUCED PLANS, THE ABOVE SCALES MAY BE USED.

J.U.L.I.E.
JOINT UTILITY LOCATION INFORMATION FOR EXCAVATION
1-800-892-0123

CONTRACT NO. 92667

STATE OF ILLINOIS
DEPARTMENT OF TRANSPORTATION
DIVISION OF HIGHWAYS

SUBMITTED Jan. 9, 2006
Christ H. Reed DISTRICT ENGINEER

February 3, 2006
Mike [Signature] ENGINEER OF DESIGN AND ENVIRONMENT

February 3, 2006
Milton R. [Signature] P.E. DIRECTOR, DIVISION OF HIGHWAYS

**PRINTED BY THE AUTHORITY
OF THE STATE OF ILLINOIS**

PROJECT ENGINEER: SAL MADONIA (217)-782-4761
SQUAD TECHNICIAN: TIM SLAGLE (217)-782-4761