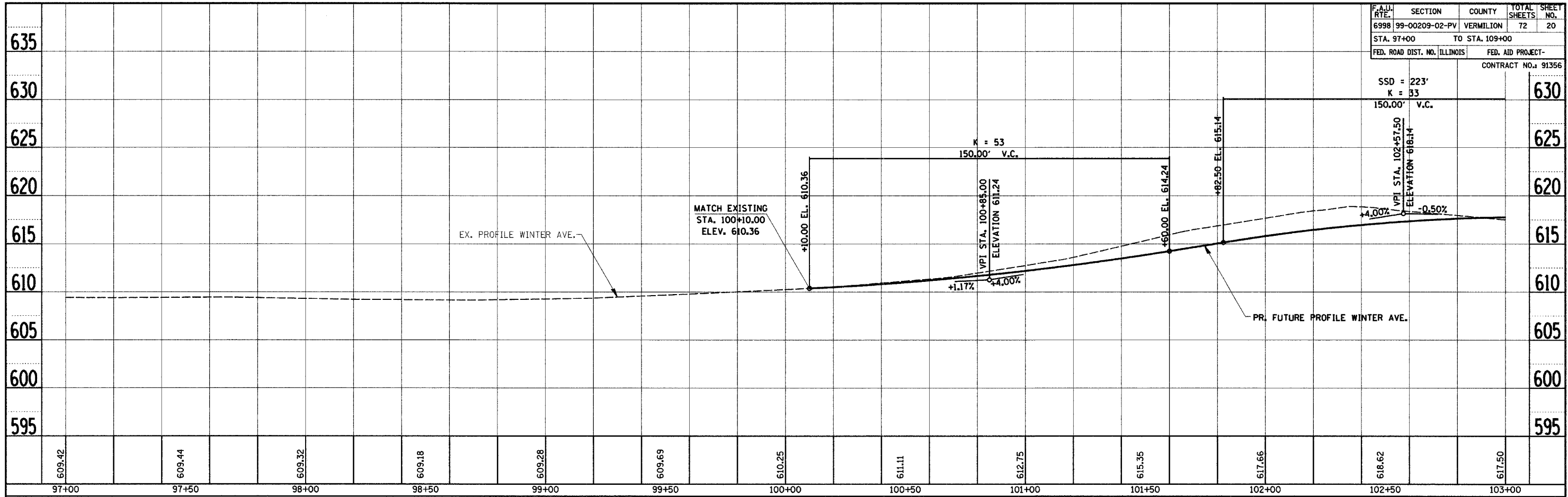


F.A.U. SECTION COUNTY TOTAL SHEETS SHEET NO.
6998 99-00209-02-PV VERMILION 72 20
STA. 97+00 TO STA. 109+00
FED. ROAD DIST. NO. ILLINOIS FED. AID PROJECT-
CONTRACT NO. 91356

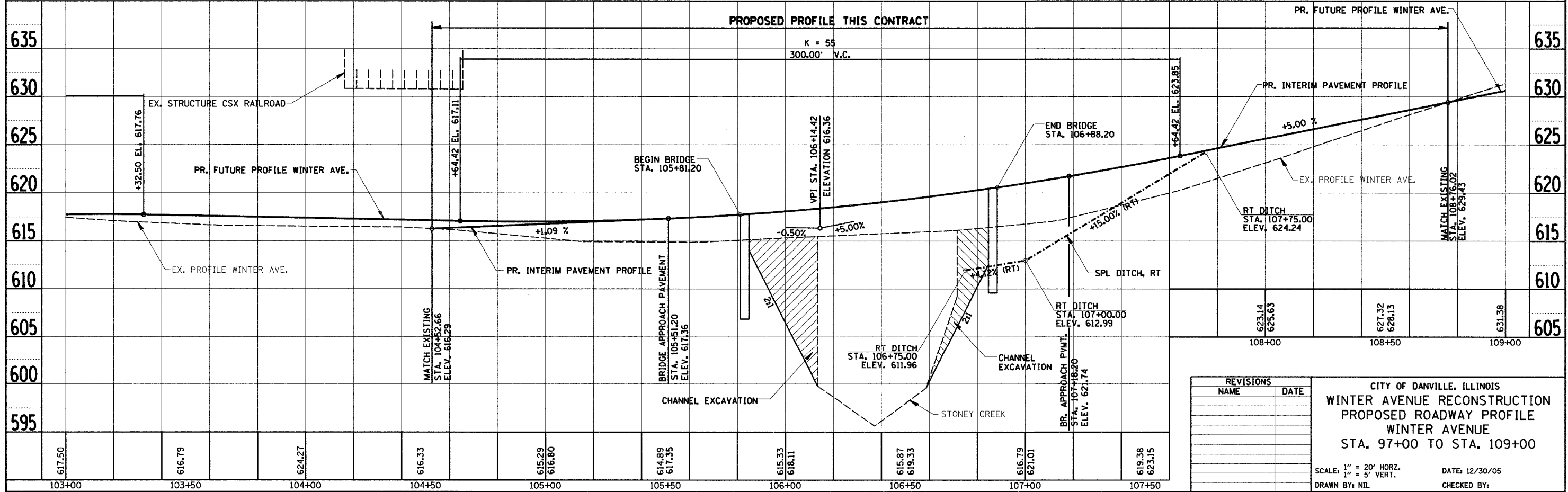
SSD = 223'
K = 33
150.00' V.C.

VPI STA. 102+57.50
ELEVATION 618.14
+4.00%
-0.50%



PROFILE SURVEYED	DATE
BY	
NOTED	
STRUCTURE NOTATIONS	
NO.	

PROPOSED PROFILE THIS CONTRACT



PROFILE SURVEYED	DATE
BY	
NOTED	
STRUCTURE NOTATIONS	
NO.	

REVISIONS	
NAME	DATE

CITY OF DANVILLE, ILLINOIS
WINTER AVENUE RECONSTRUCTION
PROPOSED ROADWAY PROFILE
WINTER AVENUE
STA. 97+00 TO STA. 109+00

SCALE: 1" = 20' HORIZ.
1" = 5' VERT.
 DRAWN BY: NIL
 DATE: 12/30/05
 CHECKED BY: