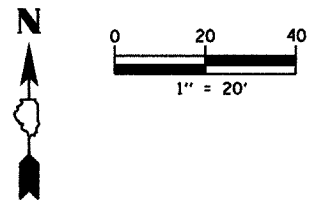


(E1) TO (E4) = REFERENCE EXISTING TYPICAL SECTIONS

SW 1/4 SEC. 28 T20N-R11W 2nd P.M.

F.A.I.D. RTE.	SECTION	COUNTY	TOTAL SHEETS	SHEET NO.
6998	99-00209-02-PV	VERMILION	72	18
STA. 109+00		TO STA. 115+00		
FED. ROAD DIST. NO. ILLINOIS		FED. AID PROJECT-		
CONTRACT NO.: 91356				



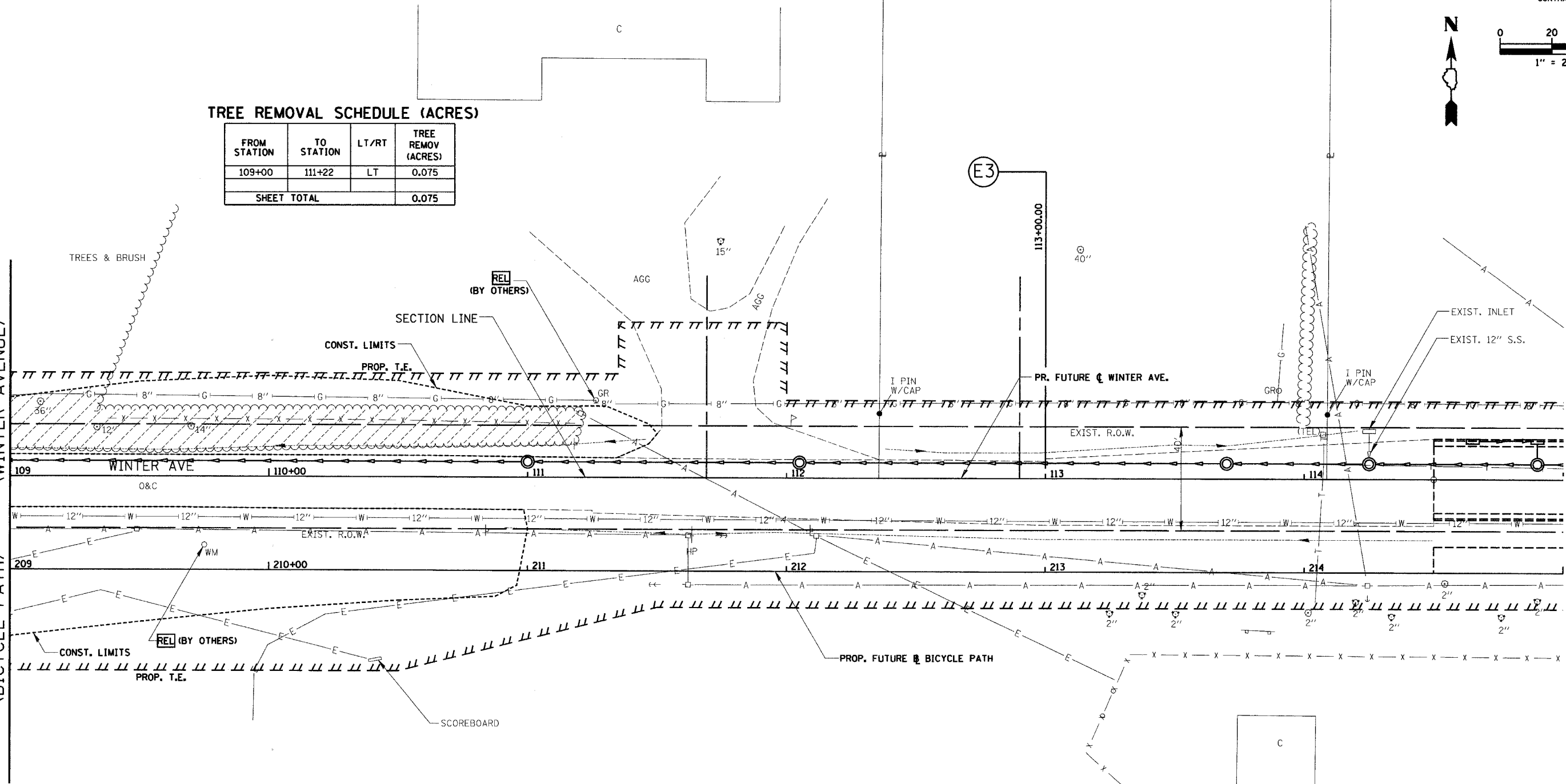
TREE REMOVAL SCHEDULE (ACRES)

FROM STATION	TO STATION	LT/RT	TREE REMOV (ACRES)
109+00	111+22	LT	0.075
SHEET TOTAL			0.075

PLAN	DATE
SURVEYED	BY
ALIGNED	BY
CHECKED	BY
NO. OF WAYS CHECKED	
DATE FILED	

MATCHLINE 109+00 (WINTER AVENUE)

MATCHLINE 209+00 (BICYCLE PATH)



REMOVAL LEGEND

- PAVEMENT REMOVAL
- DRIVEWAY PAVEMENT REMOVAL
- TREE REMOVAL (AC)
- GUARDRAIL REMOVAL
- TREE REMOVAL

REVISIONS	
NAME	DATE

CITY OF DANVILLE, ILLINOIS
WINTER AVENUE RECONSTRUCTION
 EXISTING REMOVAL PLAN
 WINTER AVENUE/BICYCLE PATH
 STA. 109+00 TO STA. 115+00

SCALE: 1" = 20'
 DRAWN BY: NIL

DATE: 12/30/05
 CHECKED BY: XXX

NW 1/4 SEC. 33 T20N-R11W 2nd P.M.