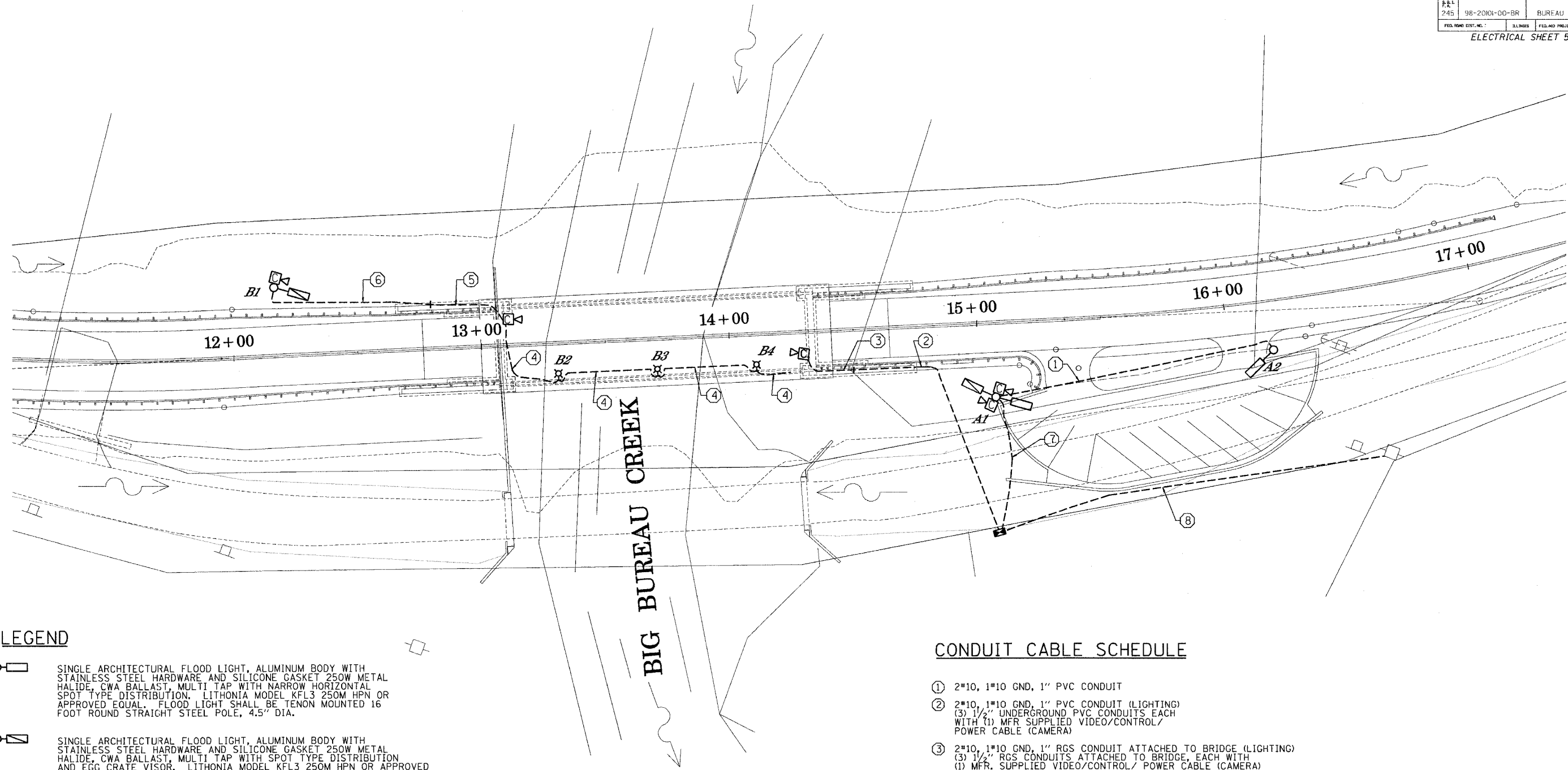
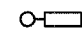
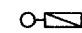
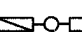
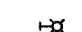
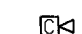



PROJECT	SECTION	COUNTY	SHEETS	SHEET
245	98-20101-00-BR	BUREAU	65	63
FED. ROAD DIST. NO.:		ILLINOIS	FED. AID PROJECT: BROS-0116(2)	
ELECTRICAL SHEET 5 OF 5				



LEGEND

-  SINGLE ARCHITECTURAL FLOOD LIGHT, ALUMINUM BODY WITH STAINLESS STEEL HARDWARE AND SILICONE GASKET 250W METAL HALIDE, CWA BALLAST, MULTI TAP WITH NARROW HORIZONTAL SPOT TYPE DISTRIBUTION. LITHONIA MODEL KFL3 250M HPN OR APPROVED EQUAL. FLOOD LIGHT SHALL BE TENON MOUNTED 16 FOOT ROUND STRAIGHT STEEL POLE, 4.5" DIA.
-  SINGLE ARCHITECTURAL FLOOD LIGHT, ALUMINUM BODY WITH STAINLESS STEEL HARDWARE AND SILICONE GASKET 250W METAL HALIDE, CWA BALLAST, MULTI TAP WITH SPOT TYPE DISTRIBUTION AND EGG CRATE VISOR. LITHONIA MODEL KFL3 250M HPN OR APPROVED EQUAL. FLOOD LIGHT SHALL BE TENON MOUNTED 16 FOOT ROUND STRAIGHT STEEL POLE, 4.5" DIA.
-  TWO ARCHITECTURAL FLOOD LIGHTS, ALUMINUM BODY WITH STAINLESS STEEL HARDWARE AND SILICONE GASKET, 250W METAL HALIDE, CWA, MULTI TAP BALLAST. ONE LUMINAIRE SHALL BE SPOT TYPE DISTRIBUTION WITH EGG CRATE VISOR AND THE OTHER SHALL BE NARROW HORIZONTAL SPOT TYPE DISTRIBUTION. FLOODLIGHTS SHALL BE TENON MOUNTED ON 16 FOOT ROUND STRAIGHT STEEL POLE, 4.5" DIAMETER.
-  100 WATT METAL HALIDE CUTOFF TYPE WALL PACK, ALUMINUM BODY, ONE PIECE GASKET. QUADTAP CWA BALLAST. PROVIDE LUMINAIRE WITH WIREGUARD. MOUNTING HEIGHT SHALL BE 16'-0" ABOVE BRIDGE DECK.
-  WEATHERPROOF, COLOR/MONOCHROMATIC VIDEO CAMERA
-  LIGHTING CONTROLLER WITH FIREALARM AND VIDEO EQUIPMENT.

LIGHTING AND CAMERA PLAN
SCALE: 1"=20'

CONDUIT CABLE SCHEDULE

- ① 2*10, 1*10 GND, 1" PVC CONDUIT
- ② 2*10, 1*10 GND, 1" PVC CONDUIT (LIGHTING)
(3) 1/2" UNDERGROUND PVC CONDUITS EACH WITH (1) MFR SUPPLIED VIDEO/CONTROL/POWER CABLE (CAMERA)
- ③ 2*10, 1*10 GND, 1" RGS CONDUIT ATTACHED TO BRIDGE (LIGHTING)
(3) 1/2" RGS CONDUITS ATTACHED TO BRIDGE, EACH WITH (1) MFR. SUPPLIED VIDEO/CONTROL/ POWER CABLE (CAMERA)
- ④ 2*10, 1*10 GND, 1" RGS CONDUIT ATTACHED TO BRIDGE (LIGHTING)
(2) 1/2" RGS CONDUITS ATTACHED TO BRIDGE, EACH WITH (1) MFR. SUPPLIED VIDEO/CONTROL/POWER CABLE (CAMERA)
- ⑤ 2*10, 1*10 GND, 1" RGS CONDUIT ATTACHED TO BRIDGE (LIGHTING)
(1) 1/2" RGS CONDUIT ATTACHED TO BRIDGE, WITH (1) MFR. SUPPLIED VIDEO/CONTROL/POWER CABLE (CAMERA)
- ⑥ 2*10, 1*10 GND, 1" PVC CONDUIT (LIGHTING)
(1) 1/2" UNDERGROUND PVC CONDUIT WITH (3) MFR SUPPLIED VIDEO/CONTROL/POWER CABLE (CAMERA)
- ⑦ 2*10, 1*10 GND, 1" PVC CONDUIT (LIGHTING)
(1) 1/2" PVC CONDUIT WITH (2) MFR. SUPPLIED VIDEO/CONTROL/POWER CABLE (CAMERAS)
- ⑧ 3*1, 1/2" UNDERGROUND PVC CONDUIT. ALL EXPOSED CONDUIT SHALL BE RIGID GALVANIZED STEEL. ALL ELBOWS SHALL BE LONG RADIUS, RGS TYPE. PROVIDE ENOUGH CONDUCTORS AND CONDUIT TO EXTEND UP POLE TO TRANSFORMER. FINAL CONNECTION TO TRANSFORMER AS WELL AS INSTALLATION OF CONDUIT AFTER THE FIRST TEN FEET ABOVE GROUND SHALL BE BY THE CITY OF PRINCETON ELECTRICAL DEPARTMENT.

LIGHTING AND CAMERA PLAN
SECTION 98-20101-00-BR
T.R. 245 OVER BIG BUREAU CREEK
STA. 13+70 (S.N. 006-4288)
BUREAU COUNTY

		WILLETT, HOFMANN & ASSOCIATES, INC. CONSULTING ENGINEERS <small>Land Surveying - Transportation - Structural Environmental - Architecture</small>	Designed By: J.J.F. Date: August, 05 Checked By: C.E.C. Date: August, 05 Drawn By: M.E.W. Date: August, 05
		WHA # 1104D04	