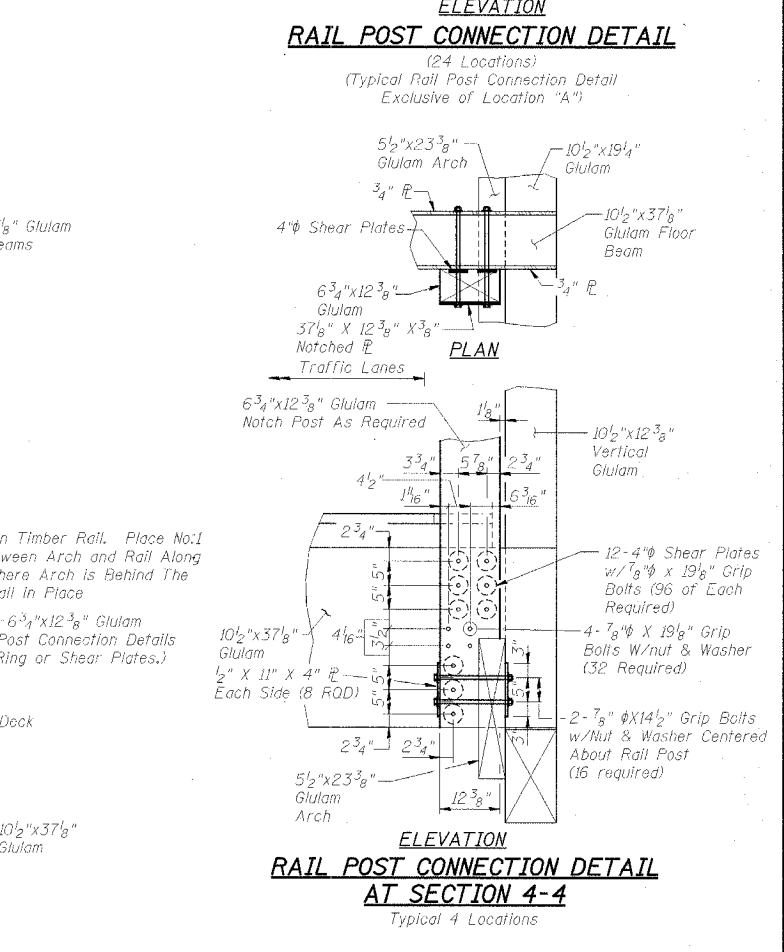
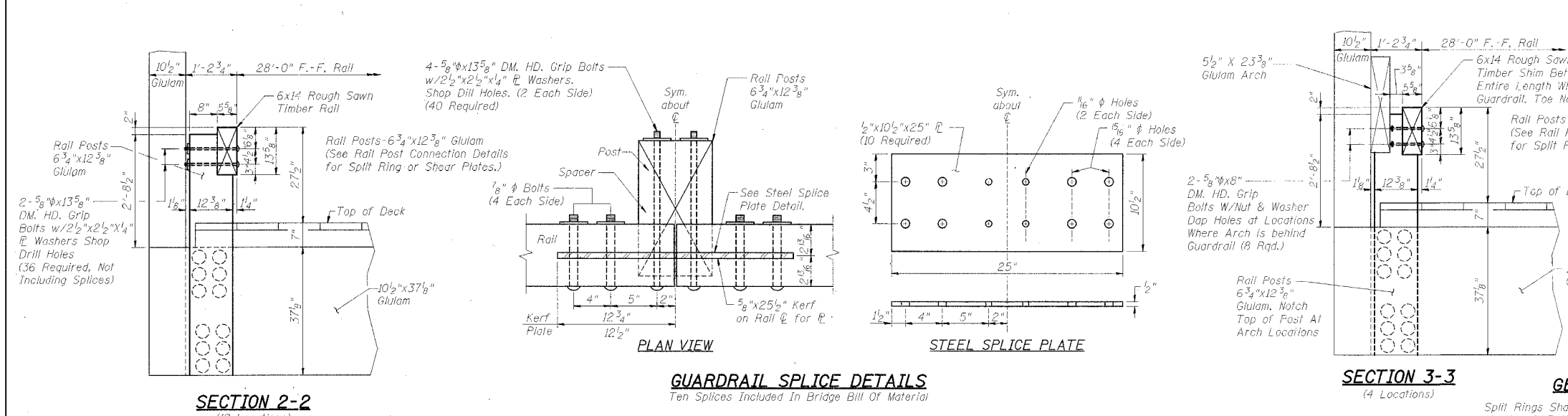
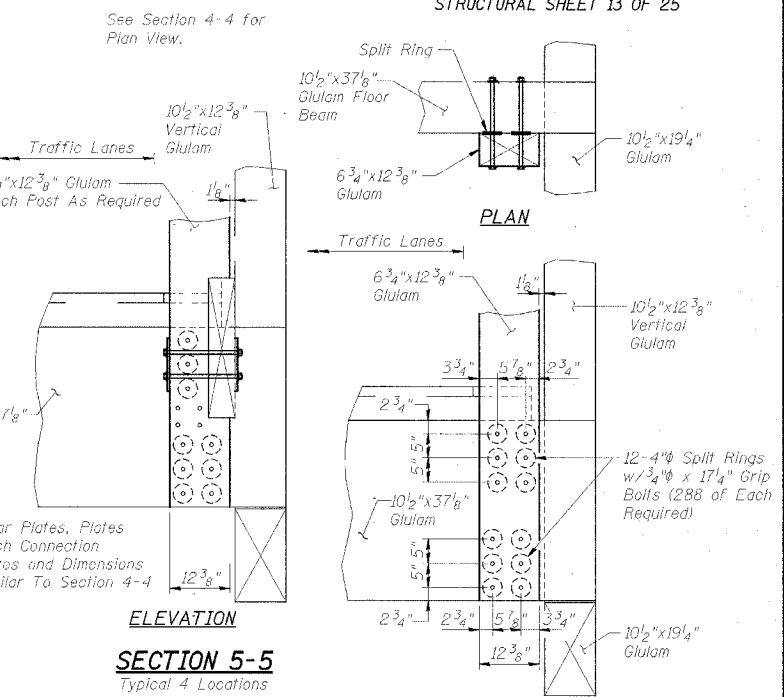
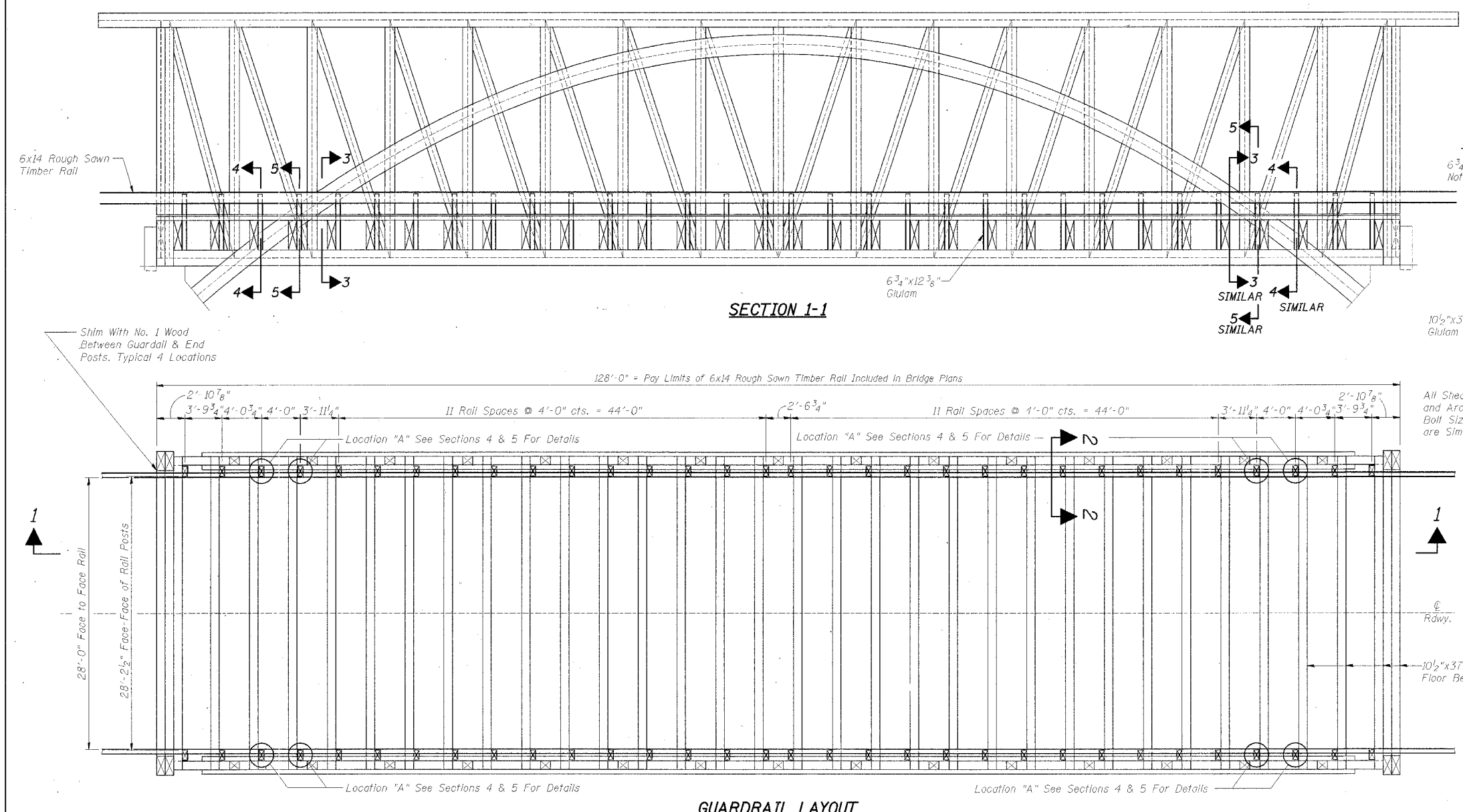


DATE	SECTION	COUNTY	SCALE	SHEET
245	98-20101-00-BR	BUREAU	65	46
FED. ROAD DIST. NO. 7		ILLINOIS	FED. AID PROJECT-BROS-011(62)	

STRUCTURAL SHEET 13 OF 25



**GENERAL NOTES**  
 Split Rings Shall Be Hot Rolled Carbon Steel Meeting SAE 1010 Specifications  
 Shear Plates Shall Be Cast Malleable Iron Manufactured To Grade 32510 OF ASTM Standard A47.

**COVERED BRIDGE GUARDRAIL**  
 SECTION 98-20101-00-BR  
 T.R. 245 OVER BIG BUREAU CREEK  
 STA. 13+70 (S.N. 006-4288)  
 BUREAU COUNTY  
 WHA # 1104D04