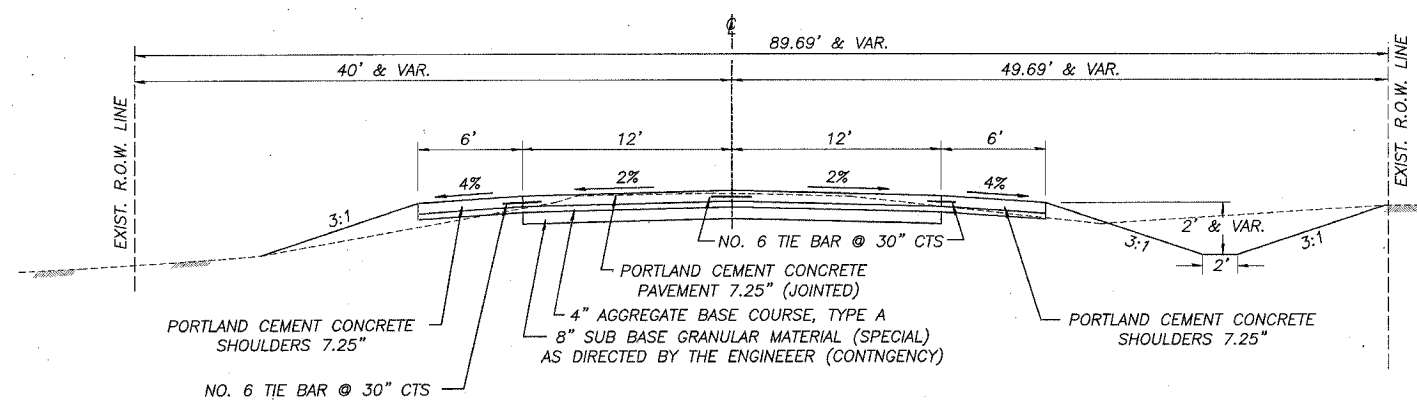


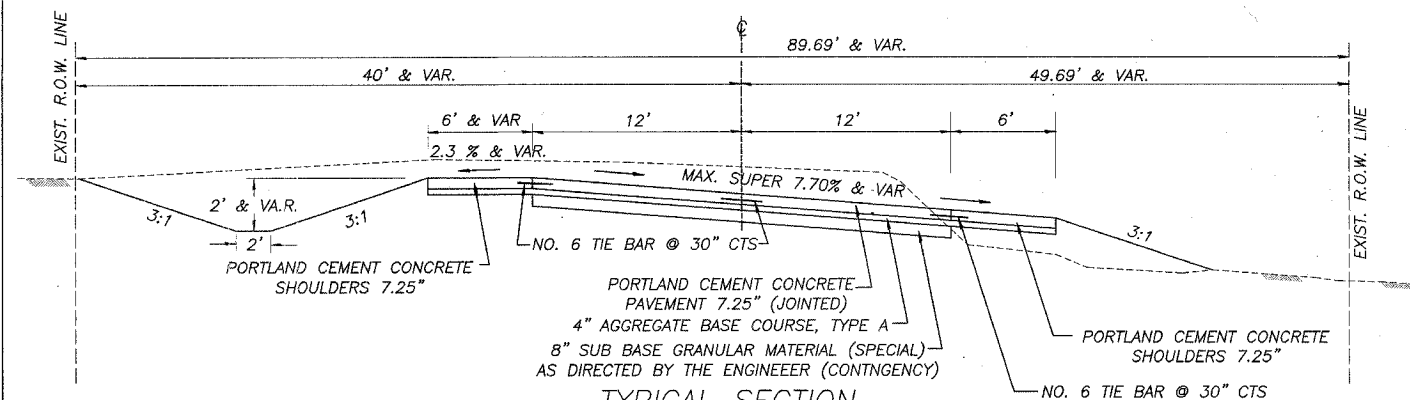
|                       |                |                   |              |       |
|-----------------------|----------------|-------------------|--------------|-------|
| ROUTE                 | SECTION        | COUNTY            | DISTRICT     | SHEET |
| P.A.L.<br>245         | 98-20101-00-BR | BUREAU            | 65           | 4     |
| FED. ROAD DIST. NO. 7 | ILLINOIS       | FED. AID PROJECT: | BR05-011(62) |       |

# EPPERSON ROAD TYPICAL SECTIONS



TYPICAL SECTION  
EPPERSON ROAD

- ① STA. 102+00 TO 102+13.55
- ⑤ STA. 107+78.36 TO 107+85



TYPICAL SECTION  
EPPERSON ROAD

- ② STA. 102+13.55 TO 103+44.58
- ④ STA. 103+68.20 TO 107+78.36

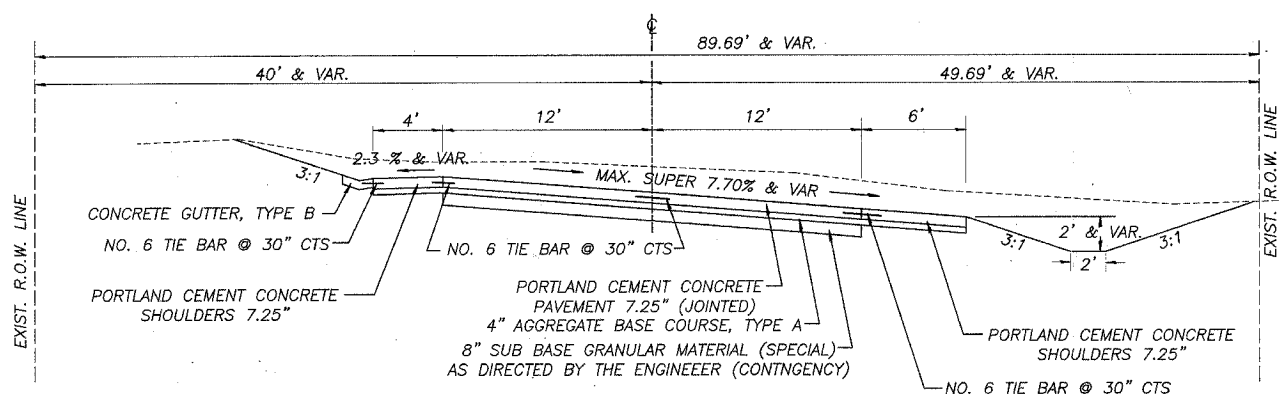
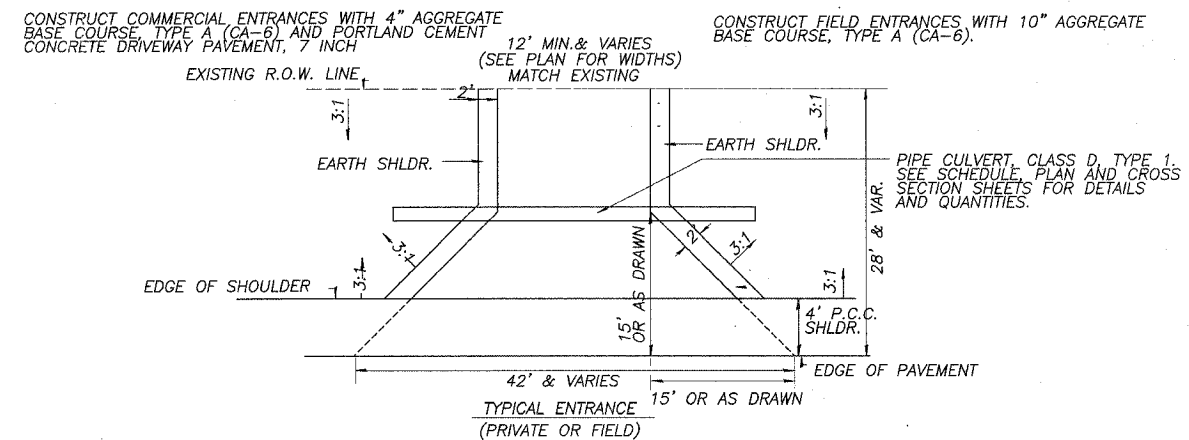
MSE = 7.70%  
 SUPER TRANSITION IN = 140' (2/3 & 1/3)  
 BS = 102+13.55  
 BMS = 103+53.55  
 SUPER TRANSITION OUT = 140' (2/3 & 1/3)  
 EMS = 106+38.36  
 ES = 107+78.36  
 ROLLOVER 10% MAX

**EPPERSON ROAD  
PAVEMENT STRUCTURAL DESIGN**

80,000 LB. DESIGN

STRUCTURAL DESIGN TRAFFIC (S.D.T.) = YEAR 2015 P.V. 1627  
 S.U. 130 M.U. 93 1850 ADT

CLASS III ROAD  
 RIGID PAVEMENT DESIGN FOR LOCAL AGENCIES.  
 SUBGRADE SUPPORT RATING (SSR) "POOR"  
 T. F. 0.69; NON-REINFORCED & AGGREGATE INTERLOCK FOR LOAD  
 TRANSFER, 12.5' JOINT SPACING  
 PAVEMENT DESIGN PROCEDURES USED  
 BUREAU OF LOCAL ROADS AND STREETS MANUAL



TYPICAL SECTION  
EPPERSON ROAD

- ③ STA. 103+44.58 TO 103+68.20
- MSE = 7.70%  
 SUPER TRANSITION IN = 140' (2/3 & 1/3)  
 BS = 102+13.55  
 BMS = 103+53.55  
 SUPER TRANSITION OUT = 140' (2/3 & 1/3)  
 EMS = 106+38.36  
 ES = 107+78.36  
 ROLLOVER 10% MAX

