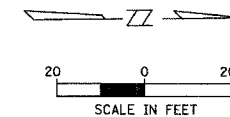
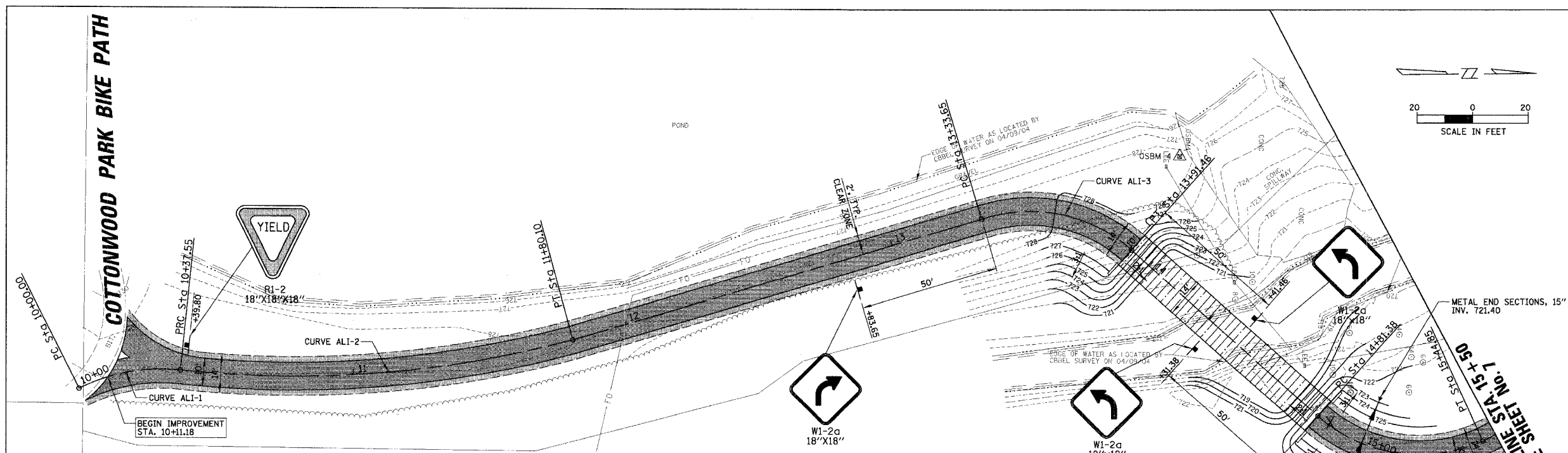


F.A.U. RTE.	SECTION	COUNTY	TOTAL SHEET NO.
2582	03-00084-00-BT	COOK	29
STA.	10+11.18	TO STA.	15+50
FED. ROAD DIST. NO. 1 ILLINOIS FED. AID PROJECT			

CONTRACT NO. 83831



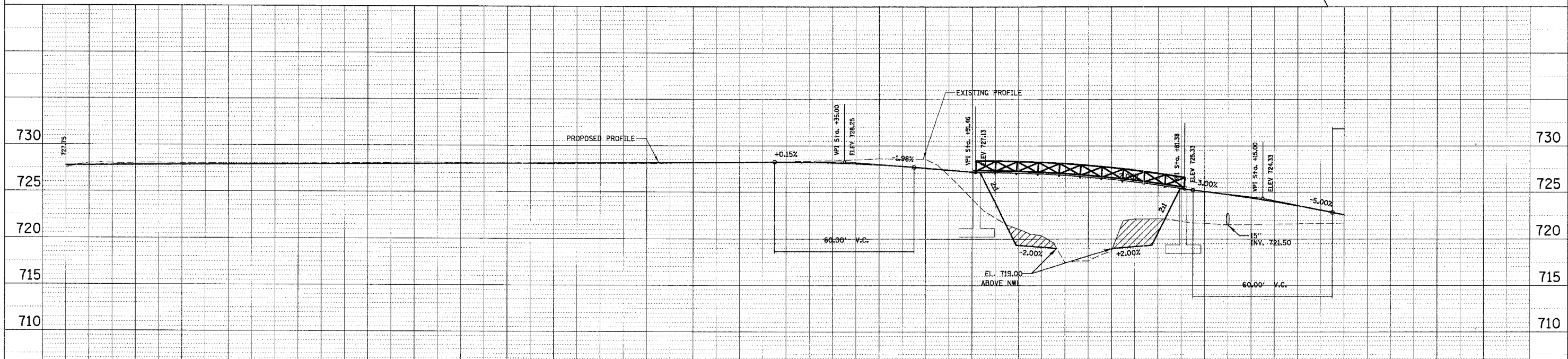
PLAN	DATE	BY
NO. 1		
NO. 2		
NO. 3		
NO. 4		



PROP. CURVE ALI-1	PROP. CURVE ALI-2	PROP. CURVE ALI-3	PROP. CURVE ALI-4
PI STA. = 10+19.30	PI STA. = 11+09.64	PI STA. = 13+65.55	PI STA. = 15+17.18
$\Delta = 32^\circ 44' 35''$ (RT)	$\Delta = 21^\circ 01' 22''$ (LT)	$\Delta = 60^\circ 13' 12''$ (RT)	$\Delta = 66^\circ 07' 44''$ (LT)
D = 87' 11' 32"	D = 14' 44' 54"	D = 104' 10' 27"	D = 104' 10' 27"
R = 65.71'	R = 388.49'	R = 55.00'	R = 55.00'
T = 19.30'	T = 72.08'	T = 31.90'	T = 35.81'
L = 37.55'	L = 142.54'	L = 57.81'	L = 63.48'
E = 2.78'	E = 6.63'	E = 8.58'	E = 10.63'
P.C. STA = 10+00.00	P.R.C. STA = 10+37.55	P.C. STA = 13+33.65	P.C. STA = 14+81.38
P.R.C. STA = 10+37.55	P.T. STA = 11+80.10	P.T. STA = 13+91.46	P.T. STA = 15+44.85

- LEGEND:**
- TREE REMOVAL
 - BITUMINOUS BIKE PATH
 - BITUMINOUS CONCRETE SURFACE COURSE, SUPERPAVE MIX C, N50 (NON OC/OA), 3"
 - AGGREGATE BASE COURSE, TYPE B, 8"

PROFILE	DATE	BY
NO. 1		
NO. 2		
NO. 3		
NO. 4		



REVISIONS	
NAME	DATE

ILLINOIS DEPARTMENT OF TRANSPORTATION

**BIKEPATH
PLAN AND PROFILE
STA. 10+11.18 TO STA. 15+50**

SCALE: VERT. 1"=5'
HORIZ. 1"=20'

DATE 11/1/2005

DRAWN BY MYG
CHECKED BY LMF

N:\B\CLM\DWG\83831\313R60\CI\11\83831\60_RPPL.PLN