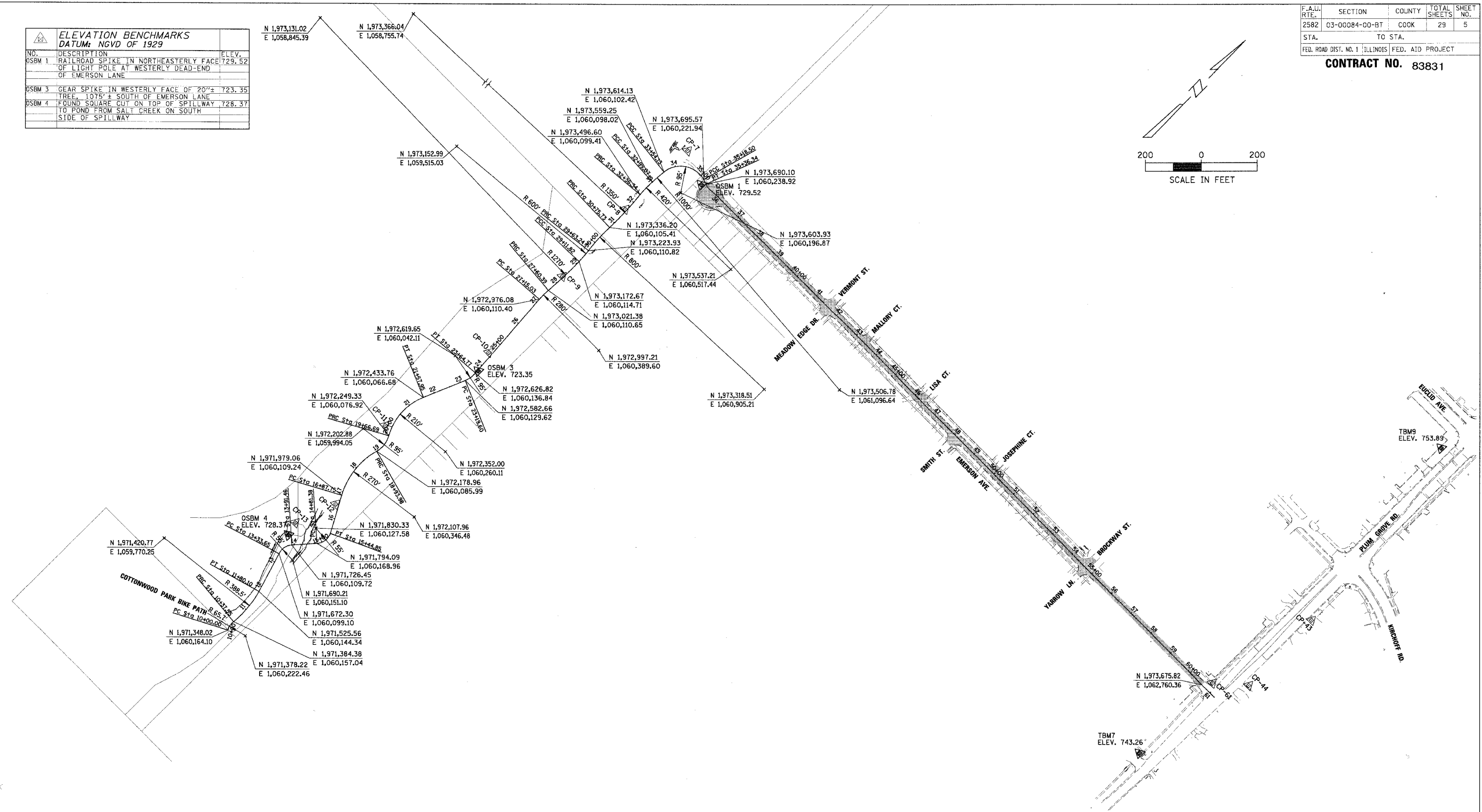
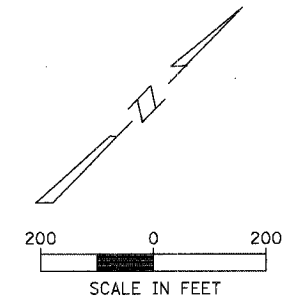


F.A.U. SECTION COUNTY TOTAL SHEET SHEETS NO.
2582 03-00084-00-BT COOK 29 5
STA. TO STA.
FED. ROAD DIST. NO. 1 ILLINOIS FED. AID PROJECT

CONTRACT NO. 83831

ELEVATION BENCHMARKS DATUM: NGVD OF 1929		
NO.	DESCRIPTION	ELEV.
OSBM 1	RAILROAD SPIKE IN NORTHEASTERLY FACE OF LIGHT POLE AT WESTERLY DEAD-END OF EMERSON LANE	729.52
OSBM 3	GEAR SPIKE IN WESTERLY FACE OF 20'± TREE, 1075'± SOUTH OF EMERSON LANE	723.35
OSBM 4	FOUND SQUARE CUT ON TOP OF SPILLWAY TO POND FROM SALT CREEK ON SOUTH SIDE OF SPILLWAY	728.37



HORIZONTAL CONTROL						
NO.	NORTHING	EASTING	ELEV.	DESCR.	STATION	OFFSET
CP-7	1,973,727.51	1,060,108.42	721.91	CP-IP	34+34.12	57.0 LT
CP-8	1,973,422.10	1,060,098.43	722.55	CP-IP	31+61.91	6.13 LT
CP-9	1,973,092.57	1,060,110.79	722.66	CP-IP	28+31.58	4.02 LT
CP-10	1,972,713.34	1,060,117.79	723.31	CP-IP	24+52.48	12.46 LT
CP-11	1,972,265.55	1,060,041.41	726.81	CP-IP	19+94.91	25.16 LT
CP-12	1,971,941.11	1,060,116.86	721.56	CP-IP	16+50.17	11.42 LT
CP-13	1,971,791.92	1,060,061.51	726.60	CP-IP	14+08.95	79.41 LT
CP-43	1,974,115.67	1,062,875.44	748.71	CP-XCUT	204+10.65	92.7 RT
CP-44	1,973,792.83	1,062,880.66	743.16	CP-IP	200+90.10	95.2 RT
CP-61	1,973,706.91	1,062,783.22	741.61	CP-XCUT	200+04.07	2.4 LT

ELEVATION BENCHMARKS DATUM: NGVD 1929		
TBM 7	ON NE BOLT OF FIRE HYD. @ NORTH SIDE OF ENTRANCE OF ROLLING MEADOWS FIRE DEPT. BUILDING #2455	743.26
TBM 9	SQUARE CUT @ TOP OF LIGHT POLE CONC. FOOTING ±27 FEET FROM CURB ALONG WESTSIDE OF PLUM GROVE RD. NEAR SW. JUNCTION OF EUCLID AV.	753.89

REVISIONS	
NAME	DATE

ILLINOIS DEPARTMENT OF TRANSPORTATION

**ALIGNMENT, TIES AND BENCHMARKS**

SCALE: VERT. NOT TO SCALE  
HORIZ. DATE 11/1/2005

DRAWN BY MYG  
CHECKED BY LMF