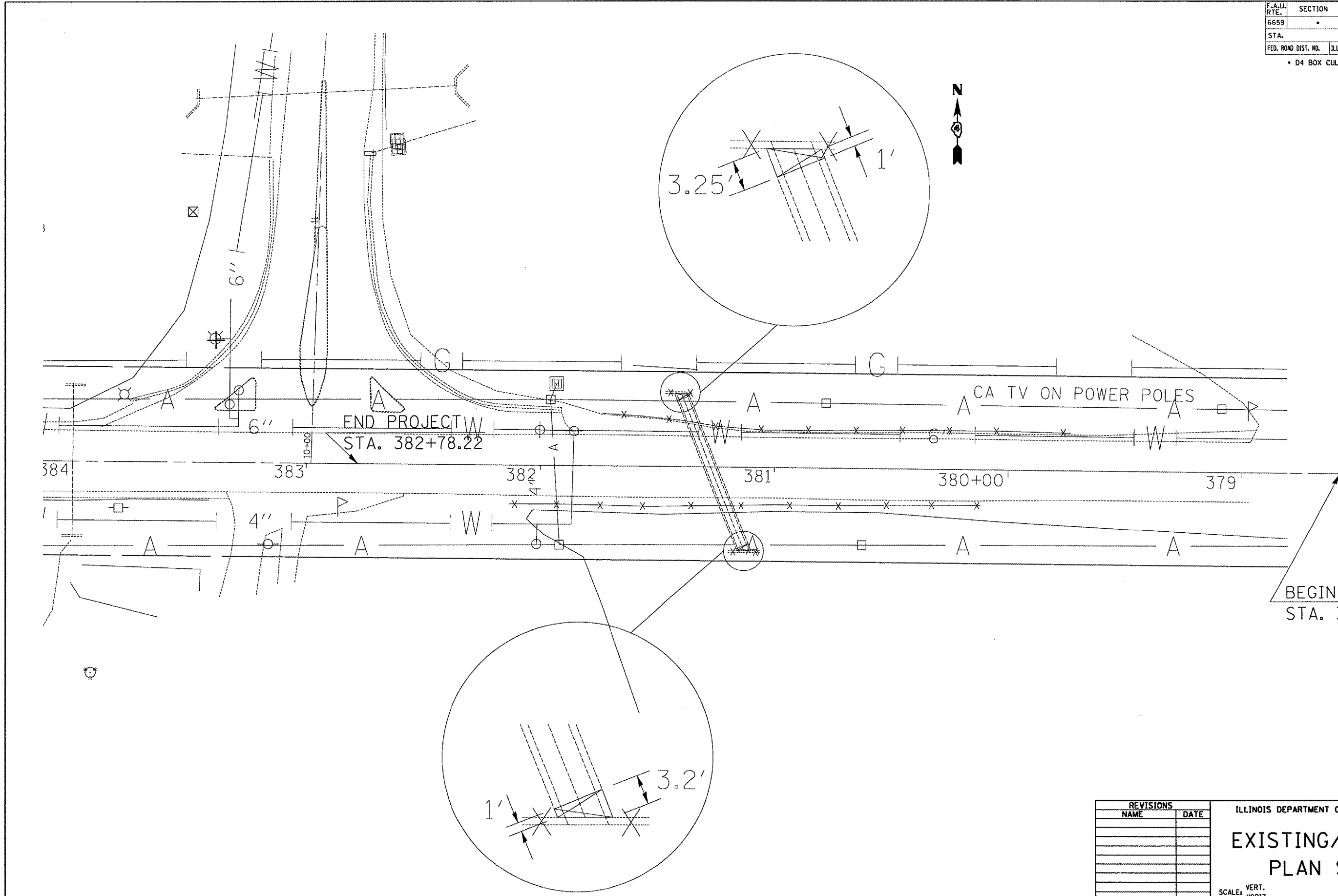


F.A.U. RTE.	SECTION	COUNTY	TOTAL SHEETS	SHEET NO.
6659	-	PEORIA	40	8
STA.		TO STA.		
FED. ROAD DIST. NO.	ILLINOIS	FED. AID PROJECT		

• D4 BOX CULVERT EXT 2006



BEGIN PROJECT  
STA. 378+58

END PROJECT  
STA. 382+78.22

CA TV ON POWER POLES

REVISIONS	
NAME	DATE

ILLINOIS DEPARTMENT OF TRANSPORTATION  
**EXISTING/REMOVAL  
PLAN SHEET**

SCALE: VERT.  
HORIZ.  
DATE

DRAWN BY  
CHECKED BY

PLT DATE = 12/19/2005  
FILE NAME = I:\proj\68325\Drawings\Plan\68325-8.dwg  
PLT SCALE = 48.0000  
USER NAME = krentzj