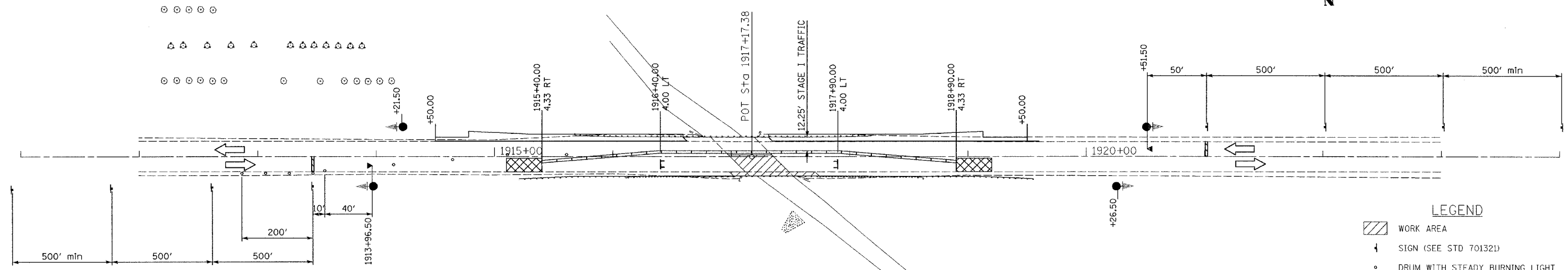


F.A.P. RTE.	SECTION	COUNTY	TOTAL SHEETS	SHEET NO.
693	22 BR	MC LEAN	28	7
STA.		TO STA.		
FED. ROAD DIST. NO.		ILLINOIS FED. AID PROJECT		

STAGE I TRAFFIC CONTROL



PRIOR TO STAGE I CONSTRUCTION

REMOVE EXISTING GUARDRAIL AND TERMINAL SECTIONS ON LT SIDE. USING STANDARD 701326 CONSTRUCT BITUMINOUS SHOULDERS 9" FROM STA 1914+50 LT TO STA 1916+62.72 LT AND FROM STA 1917+31.48 LT TO STA 1920+12.73 LT. REINSTALL EXISTING GUARDRAIL AND TERMINAL SECTIONS.

STAGE I SEQUENCE OF CONSTRUCTION

- 1 PLACE STAGE I TRAFFIC CONTROL ACCORDING TO STANDARD 701321 AND AS SHOWN
- 2 DIRECT TRAFFIC TO STAGE I ROADWAY AND COMPLETE STAGE I STRUCTURAL WORK, GUARDRAIL REMOVAL, CONSTRUCT BITUMINOUS SHOULDERS FROM STA 1914+70.90 RT TO STA 1917+02.15 RT AND FROM STA 1917+70.92 RT TO STA 1919+55.66 RT AND CONSTRUCT PROPOSED GUARDRAIL ON RT SIDE.

WIDTH RESTRICTION SIGNING

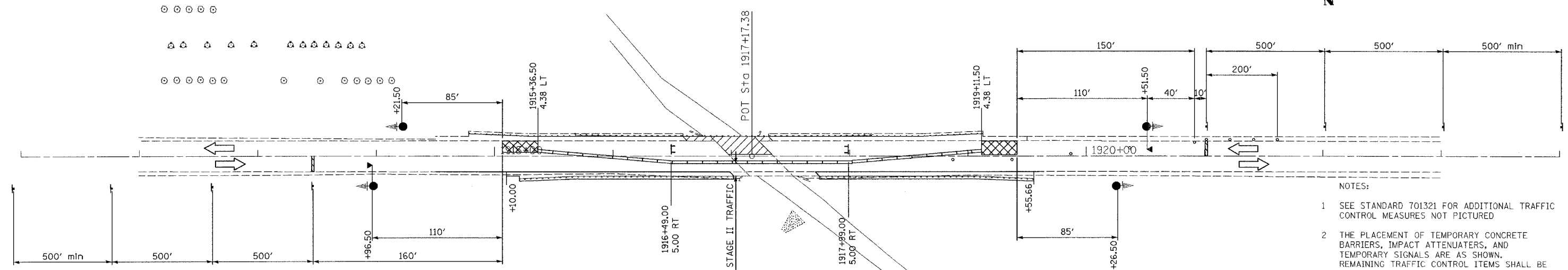
WIDTH RESTRICTION SIGNING SHALL BE PLACED WEST OF IL 165 INTERSECTION AND EAST OF IL 47 INTERSECTION WITH IL RTE 9. WIDTH RESTRICTION SHALL BE SHOWN AS 10'-9" IN STAGE I AND 10' IN STAGE II.

WIDTH RESTRICTION SIGNING SHALL BE INCLUDED IN THE COST OF STANDARD 701321.

LEGEND

- WORK AREA
- SIGN (SEE STD 701321)
- DRUM WITH STEADY BURNING LIGHT
- TRAFFIC SIGNAL WITH BACKPLATE
- TEMPORARY CONCRETE BARRIER
- IMPACT ATTENUATOR, TEMPORARY
- MICROWAVE ON ARM
- DIRECTION OF TRAFFIC
- TYPE III BARRICADE

STAGE II TRAFFIC CONTROL



STAGE II SEQUENCE OF CONSTRUCTION

- 1 RELOCATE BARRIER WALL AND IMPACT ATTENUATORS, ADD 2 ADDITIONAL SECTIONS OF BARRIER WALL, AND PUT IN PLACE OTHER TRAFFIC CONTROL MEASURES FOR STAGE II AS REQUIRED BY STANDARD 701321
- 2 ONCE TRAFFIC IS DIRECTED TO STAGE II TRAFFIC LANES COMPLETE STAGE II STRUCTURAL WORK, GUARDRAIL REMOVAL AND CONSTRUCT PROPOSED GUARDRAIL.

NOTES:

- 1 SEE STANDARD 701321 FOR ADDITIONAL TRAFFIC CONTROL MEASURES NOT PICTURED
- 2 THE PLACEMENT OF TEMPORARY CONCRETE BARRIERS, IMPACT ATTENUATORS, AND TEMPORARY SIGNALS ARE AS SHOWN. REMAINING TRAFFIC CONTROL ITEMS SHALL BE PLACED PER STANDARD 701321

PLOT DATE = 12/15/2005  
 FILE NAME = \\s\18\traffic-control.dgn  
 USER NAME = CFC

**COOMBE-BLOXDORF P.C.**  
 Engineers / Land Surveyors  
 Springfield, Illinois  
 Design Firm License No. 184-002703

REVISIONS	
NAME	DATE

ILLINOIS DEPARTMENT OF TRANSPORTATION

TRAFFIC CONTROL PLAN  
 IL ROUTE 9 OVER MONEY CREEK  
 FAP RT 693, SECTION 22 BR  
 MC LEAN COUNTY

SCALE: 1"=40'  
 DATE

DRAWN BY CFC / TFG  
 CHECKED BY MCB