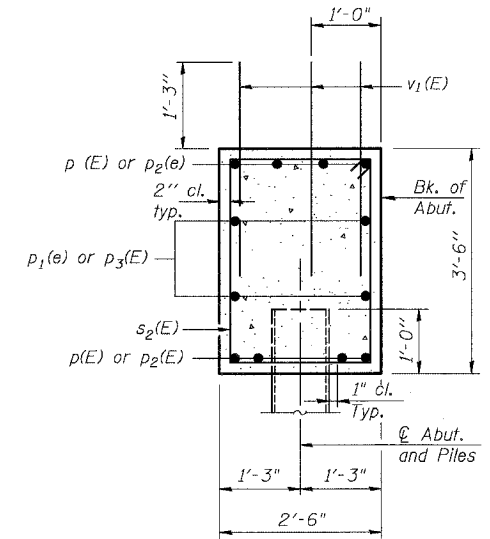
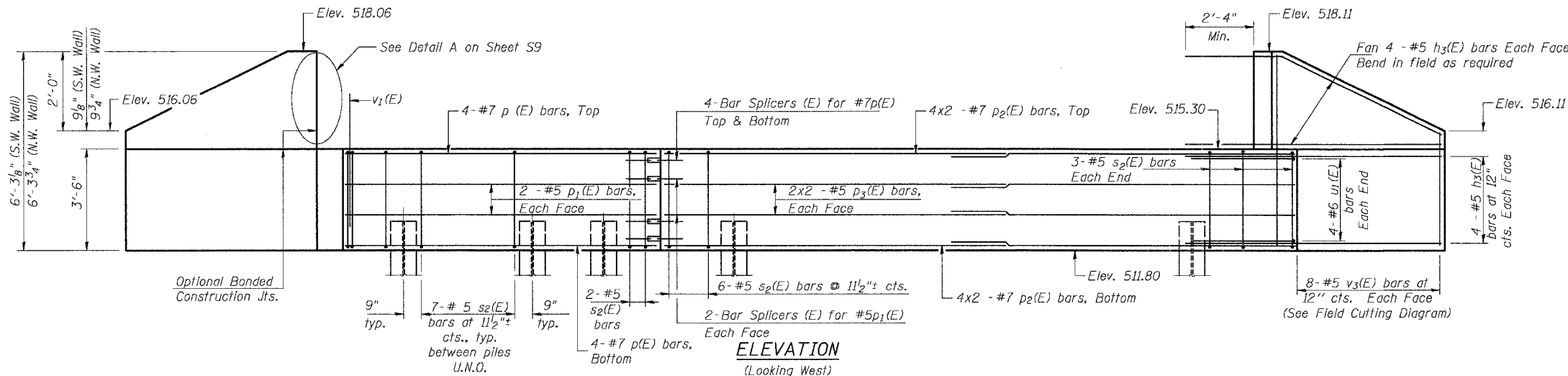


STATE OF ILLINOIS
DEPARTMENT OF TRANSPORTATION

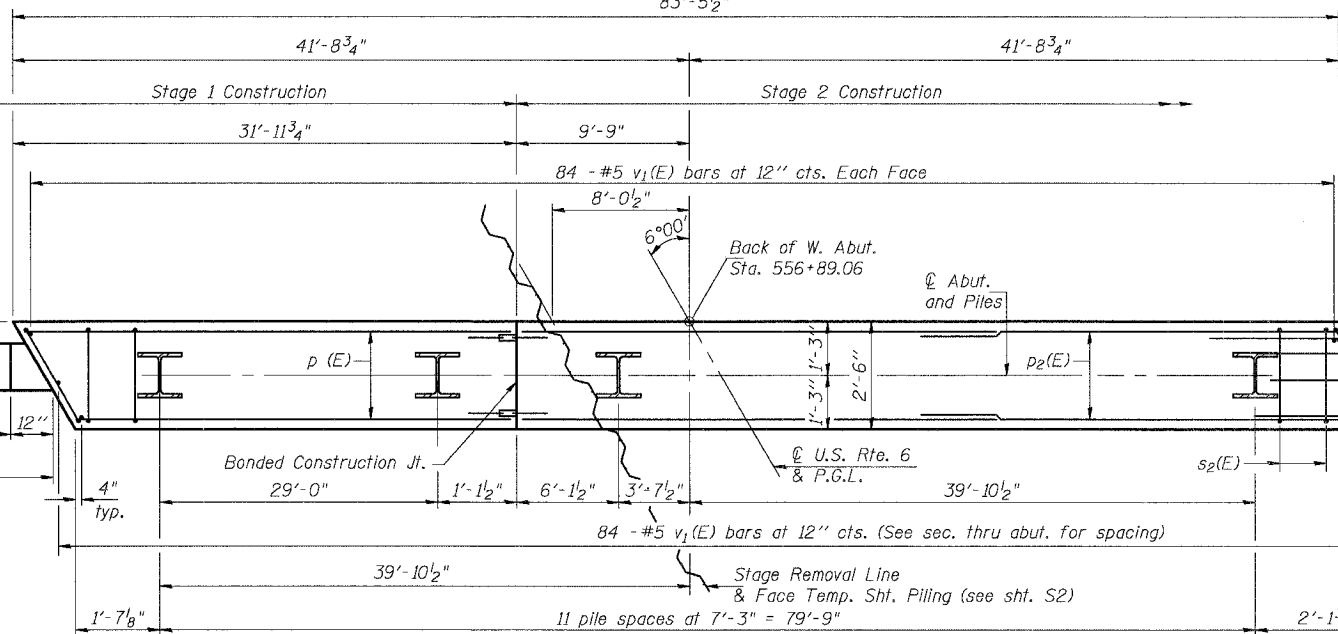
ROUTE NO.	SECTION	COUNTY	FEED SHEETS	SHEET NO.
66563	①	GRUNDY	50	38
FED. ROAD DIST. NO. 7	ILLINOIS	FED. AID PROJECT-		

① G-BR-1 66563 SHEET NO. 38 OF 514 SHEETS



PILE DATA

Type: Steel HP10x42
Capacity: Driven to Refusal
Est. Length: 37'
No. Required: 11+1 Test Pile



MIN. BAR LAP

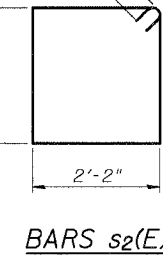
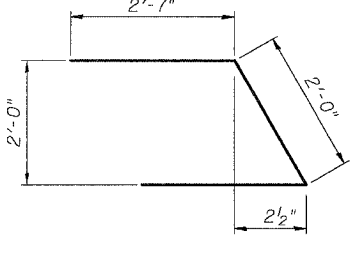
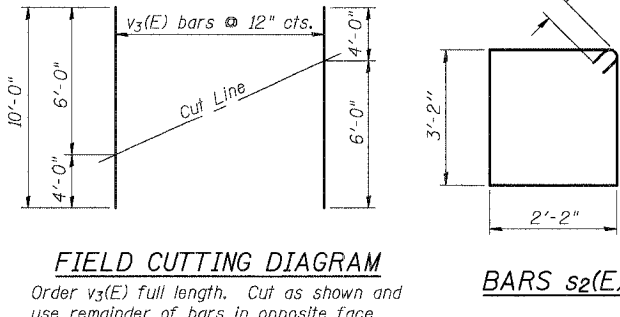
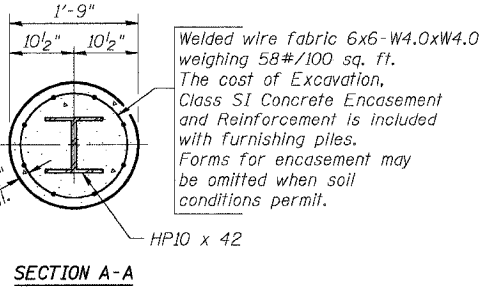
#5	2'-2"
#7	4'-10"

**SEC. THRU ABUT.
BILL OF MATERIAL**

Bar	No.	Size	Length	Shape
h3(E)	32	#5	9'-3"	—
p(E)	8	#7	31'-3"	—
p1(E)	4	#5	31'-3"	—
p2(E)	16	#7	28'-1"	—
p3(E)	8	#5	26'-9"	—
s2(E)	84	#5	11'-7"	□
u1(E)	8	#6	7'-2"	┘
v1(E)	252	#5	3'-5"	—
v3(E)	16	#5	10'-0"	—
Concrete Structures		Cu. Yd.	29.8	
Reinforcement Bars, Epoxy Coated		Pound	4270	
Structure Excavation		Cu. Yd.	81	
Furnishing Steel Piles HP10x42		Foot	407	
Test Piles Steel HP10x42		Each	1	
Driving Steel Piles		Foot	407	
Bar Splicers		Each	12	

Notes:
Reinforcement bars designated (E) shall be epoxy coated.
All piles shall be encased per the Pile Encasement Detail on this Sheet.
Bars indicated thus 4 x 2-#7(E) etc. indicate 4 lines of bars with 2 lengths per line.

**WEST ABUTMENT
U.S. ROUTE 6 (BEDFORD ROAD)
OVER EAST FORK OF NETTLE CREEK
FAU 5952-SEC. G-BR-1
GRUNDY COUNTY
STATION 557+33.31
S.N. 032-0108**



DESIGNED	UM
CHECKED	BLU
DRAWN	UM/EBP
CHECKED	BLU

DATE: 11/24/05

BOWMAN, BARRETT & ASSOCIATES INC.
CONSULTING ENGINEERS
130 E. RANDOLPH STREET
CHICAGO, ILLINOIS 60601
JOB NO. 541

c:\default\11/27/2005 2:43:20 PM n:\541\cadd\br\1dga\108b\ab01.dgn