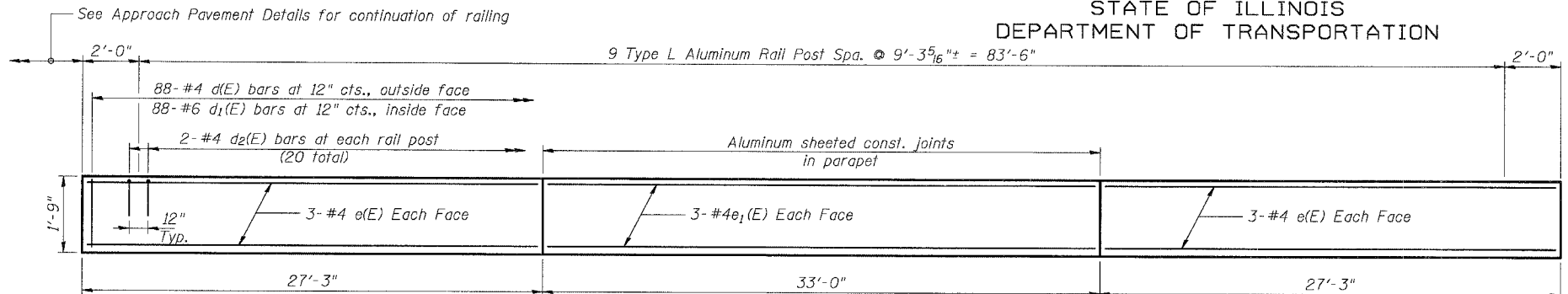
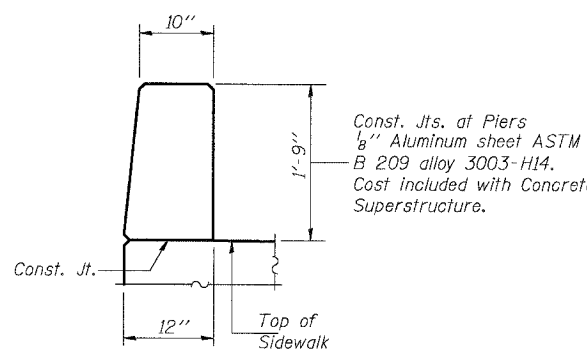
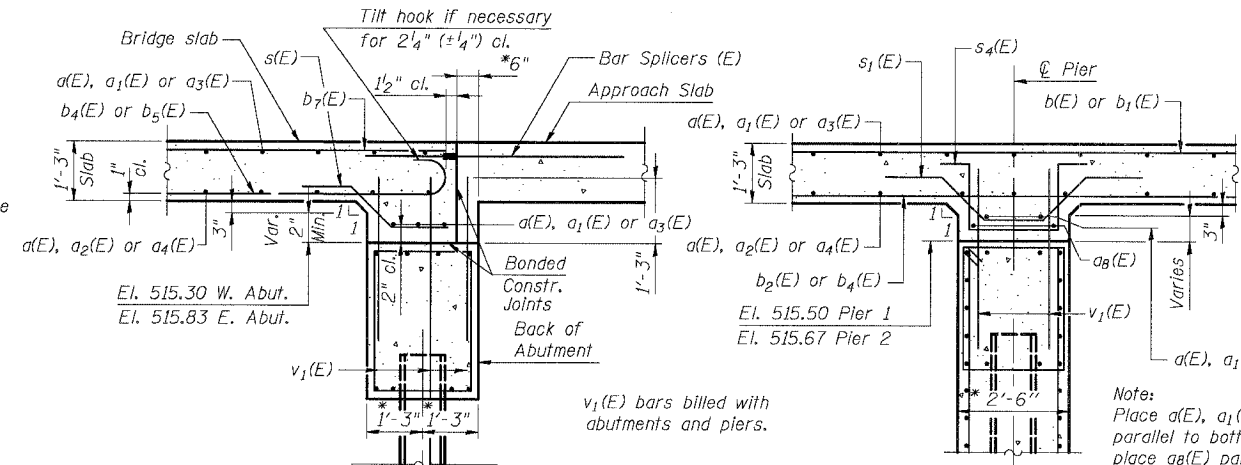


STATE OF ILLINOIS  
DEPARTMENT OF TRANSPORTATION

ROUTE NO.	SECTION	COUNTY	SHEET	SHEET	SHEET NO. 56 OF 514 SHEETS
6-GR-1	①	GRUNDY	58	36	
FED. ROAD DIST. NO. 7			ILLINOIS		FED. PROJ. NO.
			66563		

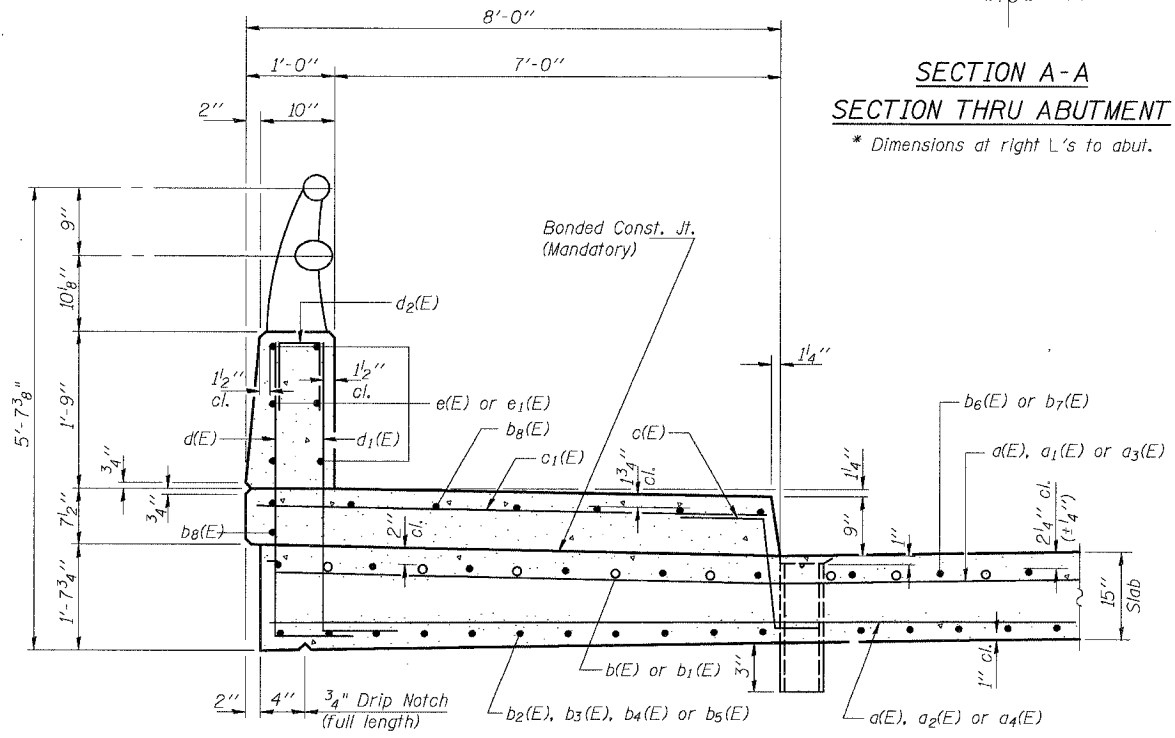


INSIDE ELEVATION OF PARAPET

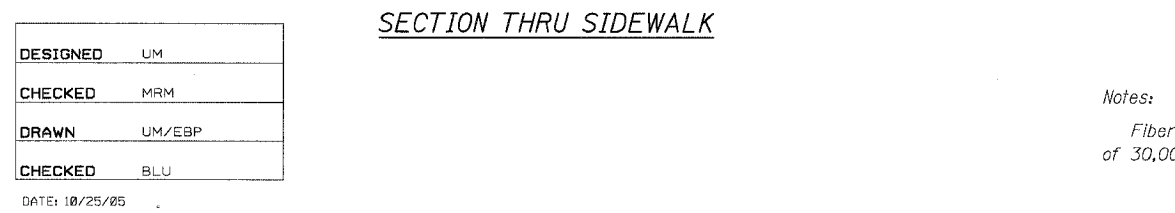


PARAPET JOINT DETAILS

SECTION A-A  
SECTION THRU ABUTMENT



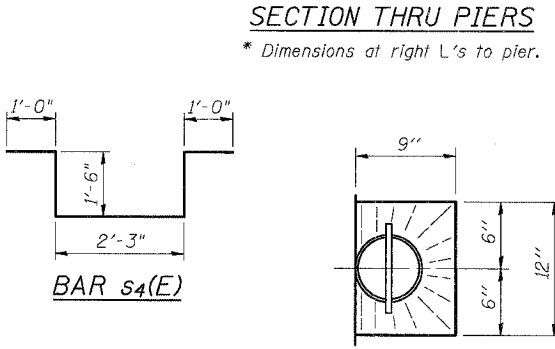
SECTION THRU SIDEWALK



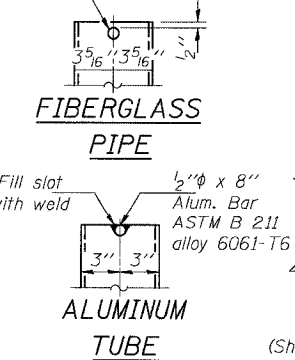
DESIGNED	UM
CHECKED	MRM
DRAWN	UM/ESP
CHECKED	BLU

DATE: 10/25/05

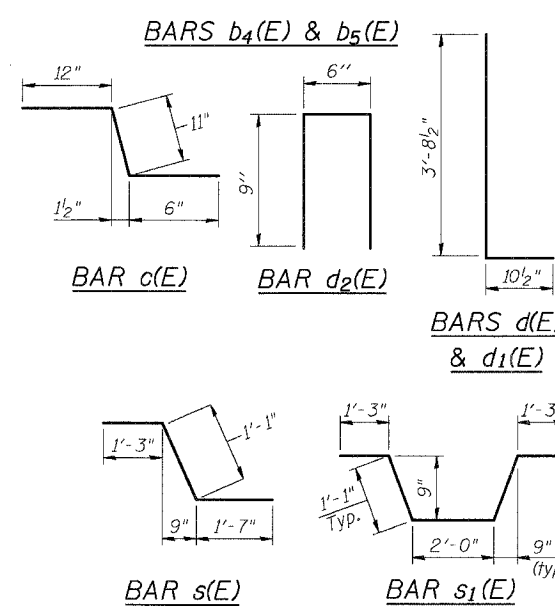
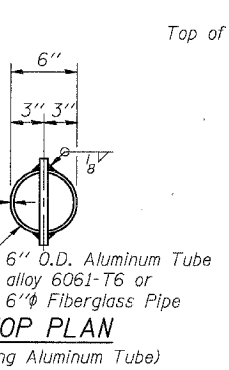
SECTION B-B  
SECTION THRU PIERS



FIBERGLASS PIPE



TOP PLAN

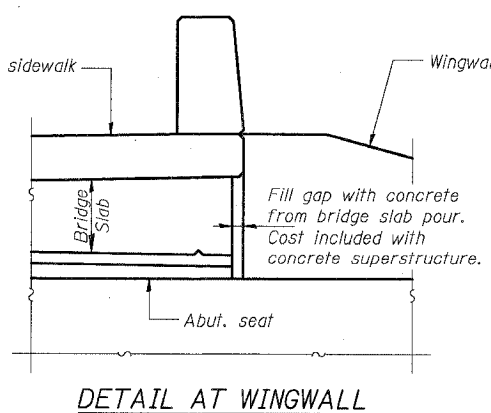


CUTTING DIAGRAM  
BARS a6(E) & a7(E)

Bar	'A'	'B'	'C'	'D'	'E'	'F'
a6(E)	21'-8"	3'-0"	3'-0"	21'-8"	24'-8"	3
a7(E)	31'-8"	3'-5"	3'-5"	31'-8"	35'-1"	4

SUPERSTRUCTURE  
BILL OF MATERIAL

Bar	No.	Size	Length	Shape
a(E)	180	#5	31'-1"	—
a1(E)	101	#5	9'-9"	—
a2(E)	87	#5	7'-9"	—
a3(E)	94	#5	41'-1"	—
a4(E)	84	#5	39'-1"	—
a5(E)	162	#5	2'-3"	—
a6(E)	6	#5	24'-8"	—
a7(E)	8	#5	35'-1"	—
a8(E)	8	#5	24'-0"	—
b(E)	170	#8	27'-3"	—
b1(E)	164	#8	13'-6"	—
b2(E)	84	#7	36'-8"	—
b3(E)	89	#7	25'-2"	—
b4(E)	168	#7	29'-7"	—
b5(E)	178	#7	25'-8"	—
b6(E)	85	#5	12'-6"	—
b7(E)	170	#5	19'-8"	—
b8(E)	60	#5	30'-7"	—
c(E)	176	#5	2'-5"	—
c1(E)	176	#5	7'-8"	—
d(E)	176	#4	4'-7"	—
d1(E)	176	#6	4'-7"	—
d2(E)	40	#4	2'-0"	—
e(E)	24	#4	27'-0"	—
e1(E)	12	#4	32'-9"	—
s(E)	170	#5	3'-11"	—
s1(E)	170	#5	6'-8"	—
s4(E)	96	#4	7'-3"	—
Reinforcement Bars, Epoxy Coated	Pound	77,900		
Concrete Superstructure	Cu. Yds.	422.5		
Bar Splicers	Each	346		
Protective Coat	Sq. Yd.	855		
Bridge Deck Grooving	Sq. Yd.	632		
Floor Drains	Each	8		



DETAIL AT WINGWALL

Notes:  
Fiberglass pipe shall conform to ASTM D 2996, with short-time rupture strength hoop tensile stress of 30,000 p.s.i. minimum.

BOWMAN, BARRETT & ASSOCIATES INC.  
CONSULTING ENGINEERS  
130 E. RANDOLPH STREET  
CHICAGO, ILLINOIS 60601  
JOB NO. 541



SUPERSTRUCTURE DETAILS  
U.S. ROUTE 6 (BEDFORD ROAD)  
OVER EAST FORK OF NETTLE CREEK  
FAU 5952-SEC. G-BR-1  
GRUNDY COUNTY  
STATION 557+33.31  
S.N. 032-0108

default 10/24/2005 11:43:11 PM n:\541\ccdd\brf\cage\108bpd01.dgn