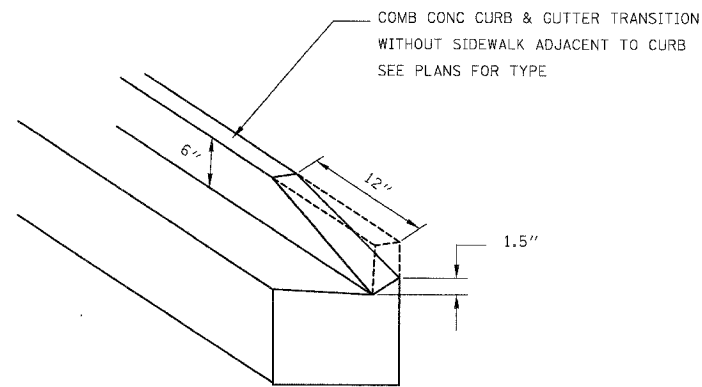
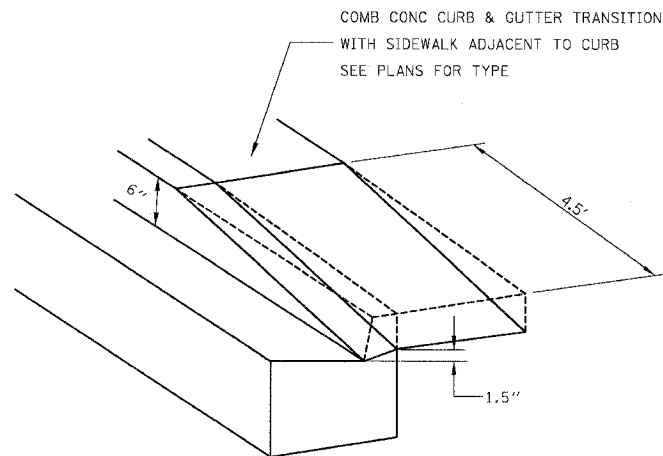


F.A. RTE.	SECTION	COUNTY	TOTAL SHEETS	SHEET NO.
	C-BR-1	GRUNDY	50	29
STA.	TO STA.			
FED. ROAD DIST. NO. 7	ILLINOIS	FED. AID PROJECT		



CURB CASE 1



CURB CASE 2

NOTES:

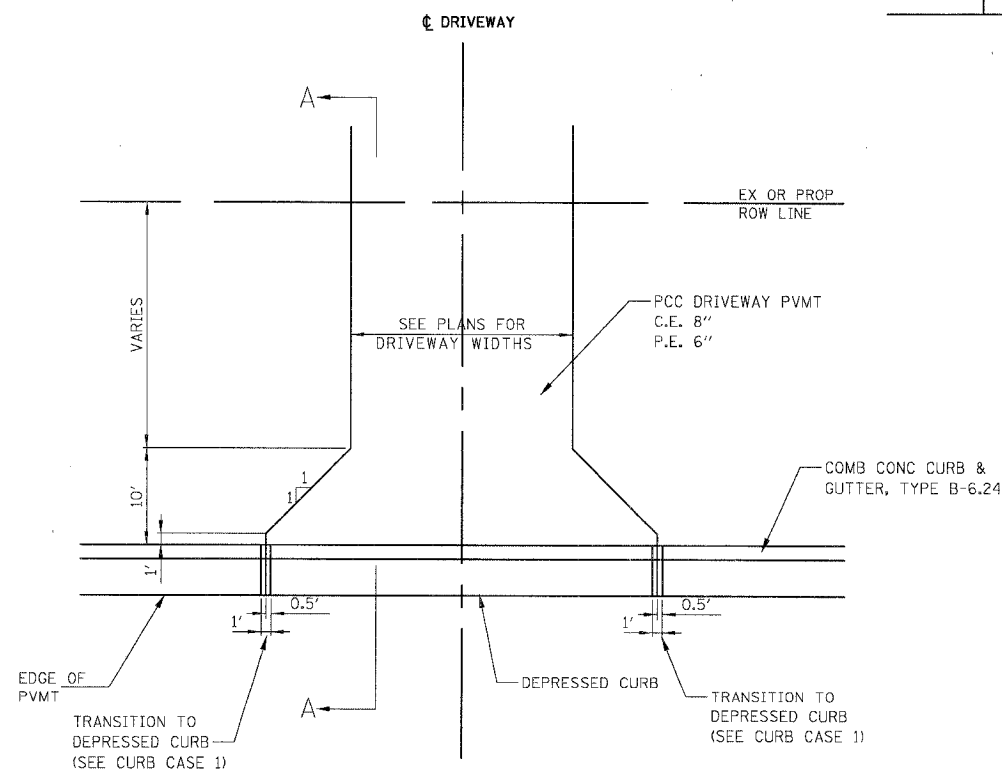
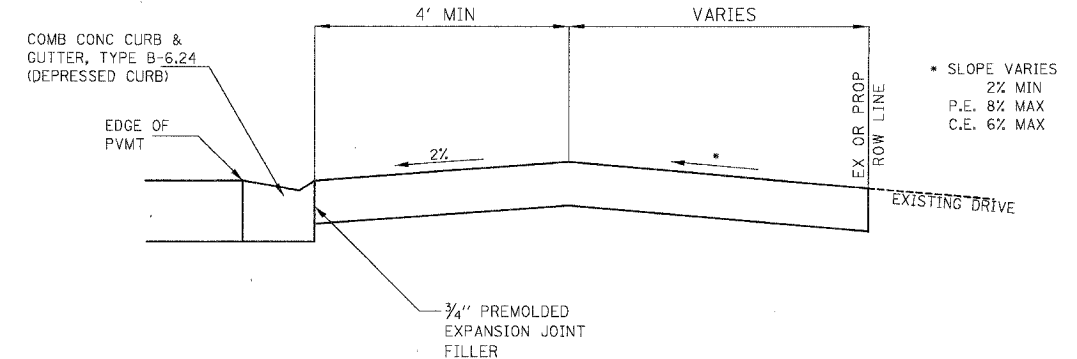
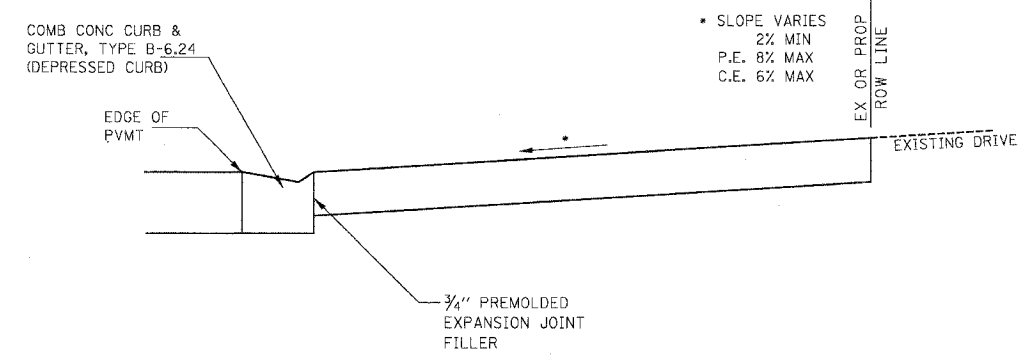
DRIVEWAY SLOPES, LOCATIONS & GEOMETRIC LAYOUT SHALL BE IN ACCORDANCE WITH THE LATEST EDITION OF THE "HANDBOOK FOR POLICY ON PERMITS FOR ACCESS DRIVEWAYS TO STATE HIGHWAYS". FOR FURTHER LAYOUT REQUIREMENTS, REFER TO ILLUSTRATIONS IN THE PERMIT HANDBOOK.

CONSTRUCT ENTRANCE TO ROW LINE UNLESS OTHERWISE SHOWN IN THE PLANS WHEN WIDTH OF PROPOSED DRIVEWAY IS GREATER THAN 20', SAWED OR TOOLED RELIEF JOINTS SHALL BE USED ALONG THE DRIVEWAY'S CENTERLINE.

THE RESIDENT ENGINEER SHALL CONTACT THE TRAFFIC PERMIT OFFICE AT 815-434-8490 FOR ANY QUESTIONS ON DRIVEWAYS SHOWN IN THE PLANS; SPECIFICALLY IN REFERENCE TO ADDITIONAL AND/OR RELOCATION/REMOVAL OF DRIVEWAY.

COMBINATION CONCRETE CURB & GUTTER SHALL BE MEASURED STRAIGHT ACROSS THE DRIVEWAY. NO ADDITIONAL COMPENSATION WILL BE ALLOWED FOR THE CURB & GUTTER TRANSITION.

3/4" PREFORMED EXPANSION JOINT FILLER WILL NOT BE PAID SEPARATELY. BUT SHALL BE CONSIDERED INCLUDED IN THE COST OF THE P.C.C. DRIVEWAY PAVEMENT OR P.C.C. SIDEWALK.



PLAN
PRIVATE OR COMMERCIAL ENTRANCE WITHOUT CURB RETURNS WITHOUT SIDEWALK

REVISIONS	
NAME	DATE

BOWMAN, BARRETT & ASSOCIATES INC.
CONSULTING ENGINEERS
130 E. RANDOLPH STREET
CHICAGO, ILLINOIS 60601
JOB NO. 541



ILLINOIS DEPARTMENT OF TRANSPORTATION

US ROUTE 6
DRIVEWAY DETAILS

SCALE: VERT. NTS
HORIZ.
DATE 10/25/05

DRAWN BY KAR
CHECKED BY DDM

10/25/2005 01:59:59 PM n:\s4\ncadd\civ\166563 E06+ For\k\54\c0\01\EF.dgn