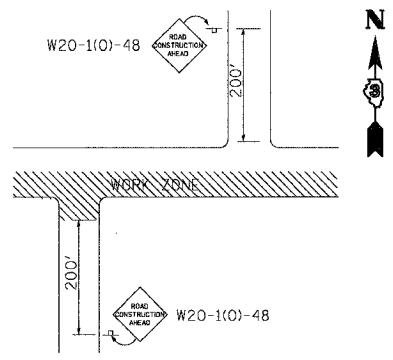
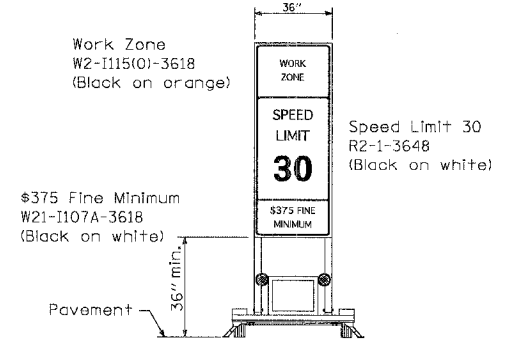
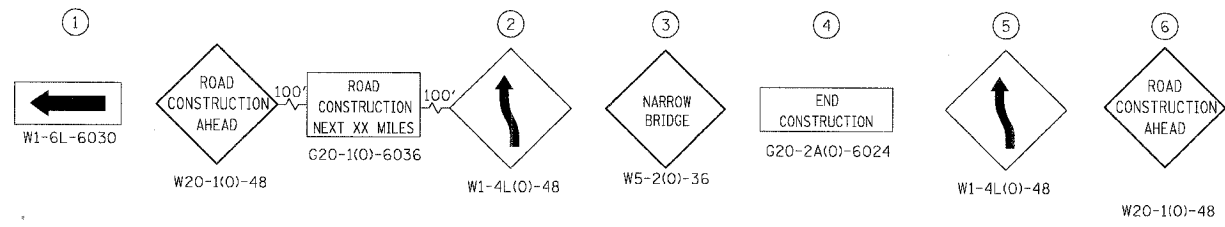
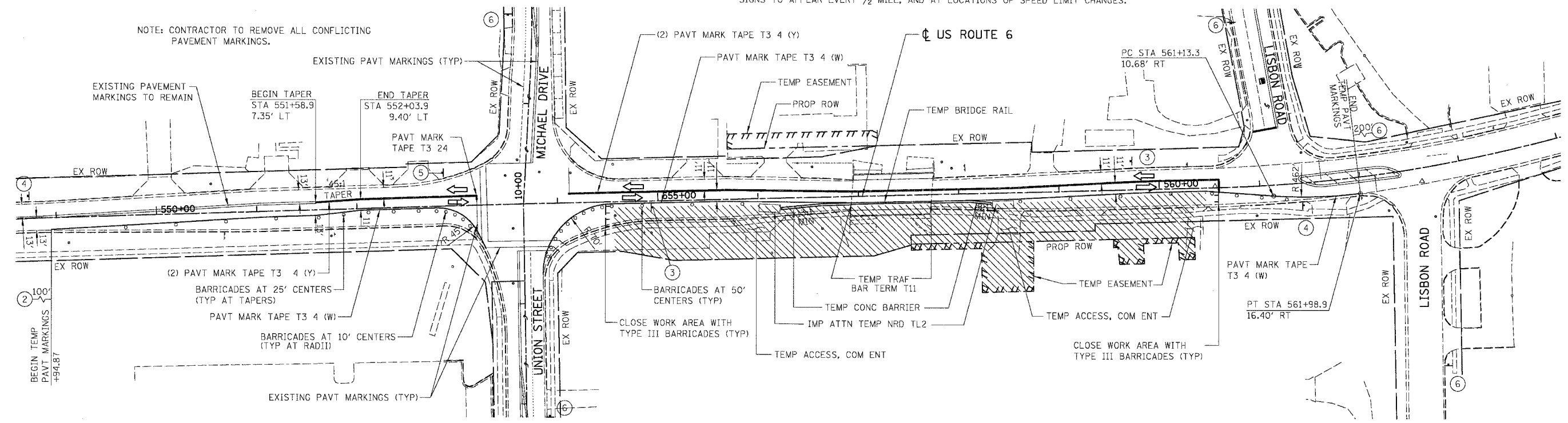


F.A.L. RTE.	SECTION	COUNTY	TOTAL SHEETS	SHEET NO.
5952	G-BR-1	GRUNDY	50	15
STA.	TO STA.			
FED. ROAD DIST. NO. 7	ILLINOIS	FED. AID PROJECT		

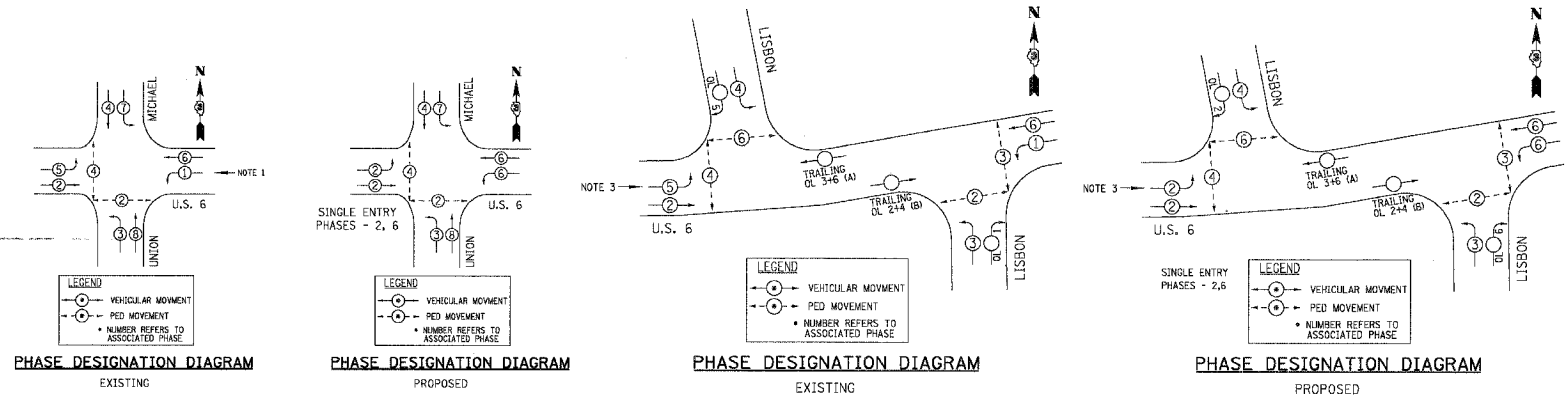


NOTE: CONTRACTOR TO REMOVE ALL CONFLICTING PAVEMENT MARKINGS.



TRAFFIC SIGNAL WORK

- CHANGE SIGNAL SEQUENCE OF OPERATION FROM EXISTING TO PROPOSED; COMBINE PHASE 5 WITH PHASE 2 AT UNION/MICHAEL. DISABLE WESTBOUND LEFT TURN LANE DETECTOR.
- INSTALL THE TWO PROPOSED FAR LOOP DETECTORS FOR EASTBOUND TRAFFIC AT LISBON ROAD, INCLUDING HANDHOLE, CONDUIT AND CABLE; MAKE THESE LOOPS OPERATIONAL IN THE CONTROLLER (SEE SHEET 17).
- CHANGE SIGNAL SEQUENCE OF OPERATION FROM EXISTING TO PROPOSED; COMBINE PHASE 1 WITH PHASE 6 AT LISBON ROAD. MOVE THE EASTBOUND LEFT TURN LANE DETECTOR FROM THE EASTBOUND LEFT TURN PHASE (5) TO THE EASTBOUND THROUGH PHASE (2).



- LEGEND:**
- WORK ZONE
 - DRUM OR TYPE II BARRICADE
 - TRAFFIC SIGN
 - TRAFFIC FLOW DIRECTION
 - TYPE III BARRICADE

REVISIONS	
NAME	DATE

ILLINOIS DEPARTMENT OF TRANSPORTATION

**U.S. ROUTE 6
MAINTENANCE OF TRAFFIC
STAGE 1A**

SCALE: VERT. NTS
HORIZ. 1" = 50'

DATE 10/25/05

DRAWN BY JAM
CHECKED BY DOM

BOWMAN, BARRETT & ASSOCIATES INC.
CONSULTING ENGINEERS
130 E. RANDOLPH STREET
CHICAGO, ILLINOIS 60601
JOB NO. 541



10/25/2005 16:26:56 PM
m:\541\road\stage1a\66563.dwg E:\at_fork\541\mch_11.dwg