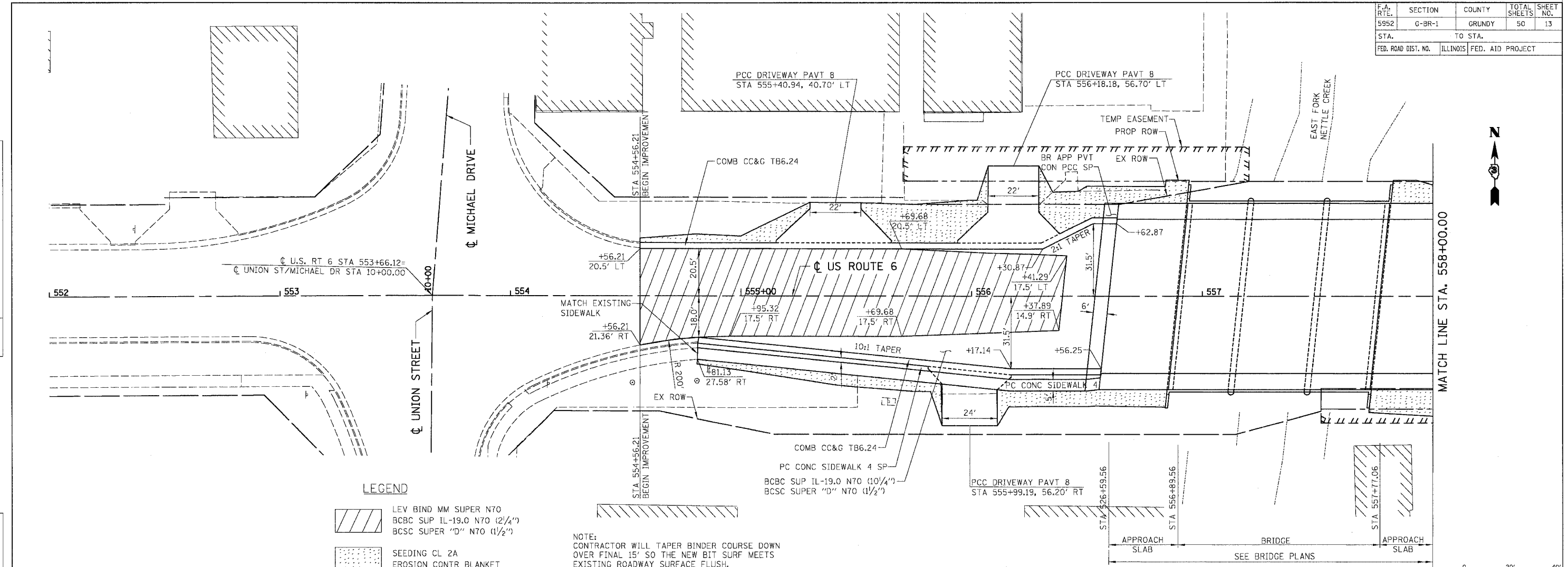


F.A. RTE.	SECTION	COUNTY	TOTAL SHEETS	SHEET NO.
5952	G-BR-1	GRUNDY	50	13
STA.		TO STA.		
FED. ROAD DIST. NO.		ILLINOIS FED. AID PROJECT		

PLAN	REVISIONS	DATE
NO.	BY	
NO.	BY	
NO.	BY	

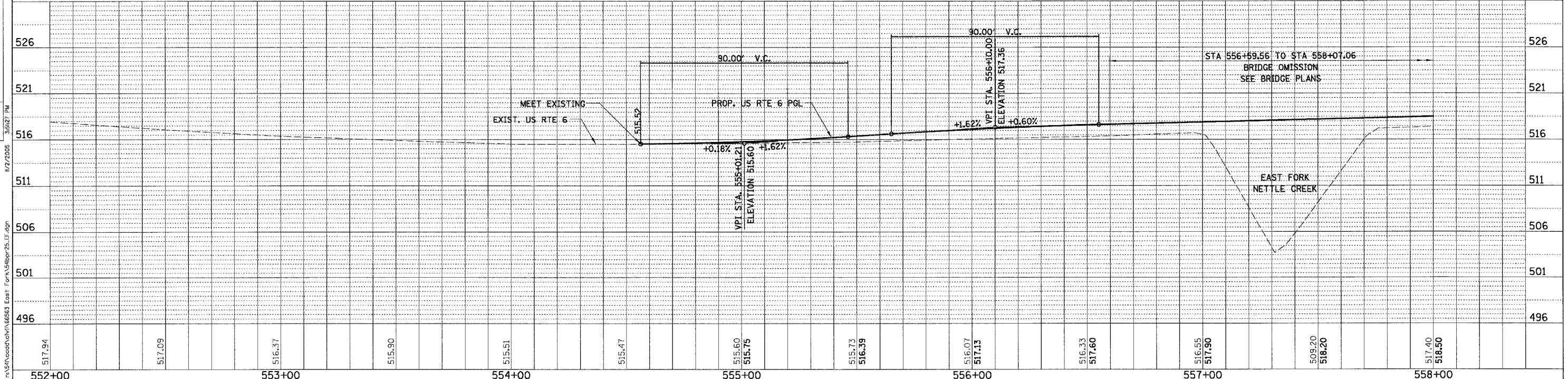
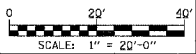
PROFILE	REVISIONS	DATE
NO.	BY	
NO.	BY	
NO.	BY	



**LEGEND**

	LEV BIND MM SUPER N70 BCBC SUP IL-19.0 N70 (2 1/4") BCSC SUPER "D" N70 (1 1/2")
	SEEDING CL 2A EROSION CONTR BLANKET

NOTE:  
CONTRACTOR WILL TAPER BINDER COURSE DOWN  
OVER FINAL 15' SO THE NEW BIT SURF MEETS  
EXISTING ROADWAY SURFACE FLUSH.



US ROUTE 6 - PROPOSED ROADWAY PLAN & PROFILE