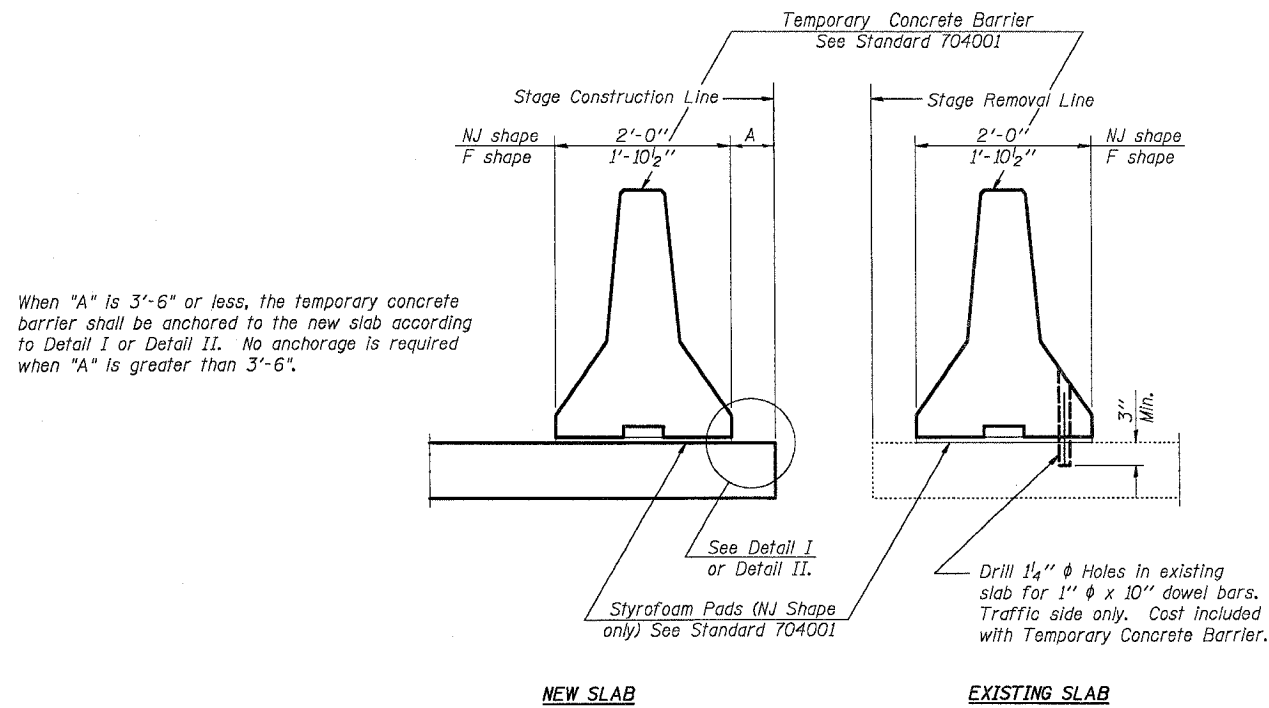


STATE OF ILLINOIS
DEPARTMENT OF TRANSPORTATION

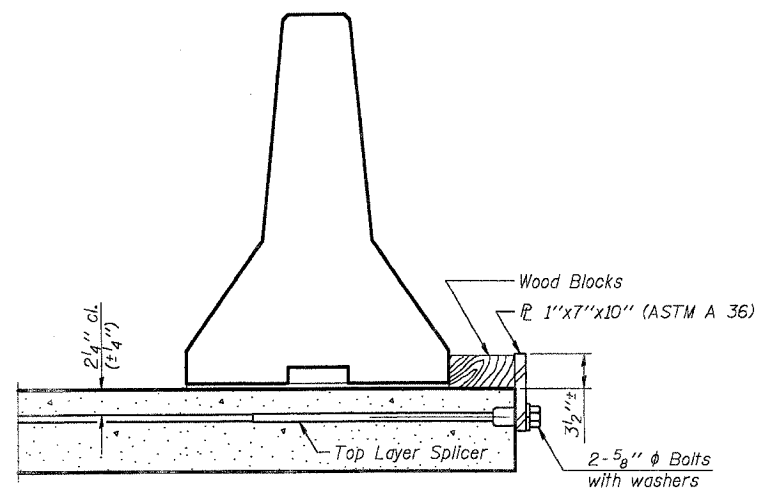
ROUTE NO.	SECTION	COUNTY	SHEET	SHEET
FAP RT.308	109 BR-3	Whiteside	47	41
STA.	TO STA.			

Contract # 64q29

Sheet 12 of 12

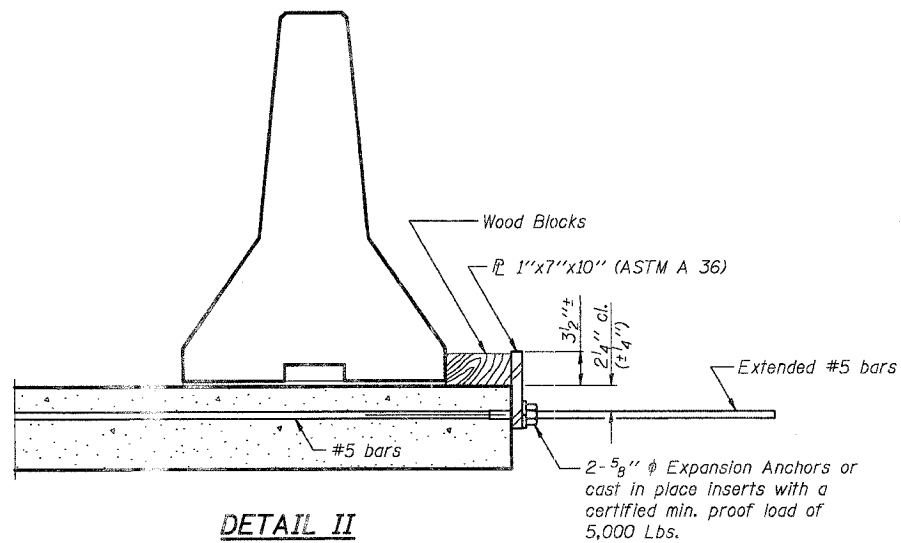


SECTIONS THRU SLAB



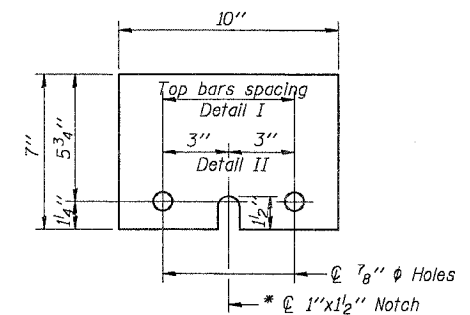
DETAIL I

The 1" x 7" x 10" Plate shall not be removed until Stage II Construction forms and reinforcement bars are in place.



DETAIL II

The 1" x 7" x 10" Plate shall not be removed until Stage II Construction forms and all reinforcement bars are in place and the concrete is ready to be placed.



1" x 7" x 10"

* Required only with Detail II

NOTES

Detail I - With Bar Splicer or Couplers:

Connect one (1) 1" x 7" x 10" steel \bar{P} to the top layer of couplers with 2-5/8" ϕ bolts screwed to coupler at approximate ϕ of each barrier panel.

Detail II - With Extended Reinforcement Bars:

Connect one (1) 1" x 7" x 10" steel \bar{P} to the concrete slab with 2-5/8" ϕ Expansion Anchors or cast in place inserts spaced between the top layer of reinforcement at approximate ϕ of each barrier panel.

Cost of anchorage is included with Temporary Concrete Barrier.

DESIGNED	MGH
CHECKED	RGD
DRAWN	MDJ
CHECKED	...

10-22-05



TEMPORARY CONCRETE BARRIER
FOR STAGE CONSTRUCTION
IL. RT. 84
OVER CEDAR CREEK
F.A.P. ROUTE 308 - SECTION 109 BR-3
WHITESIDE COUNTY
STA. 225+65.77
SN 098-0022