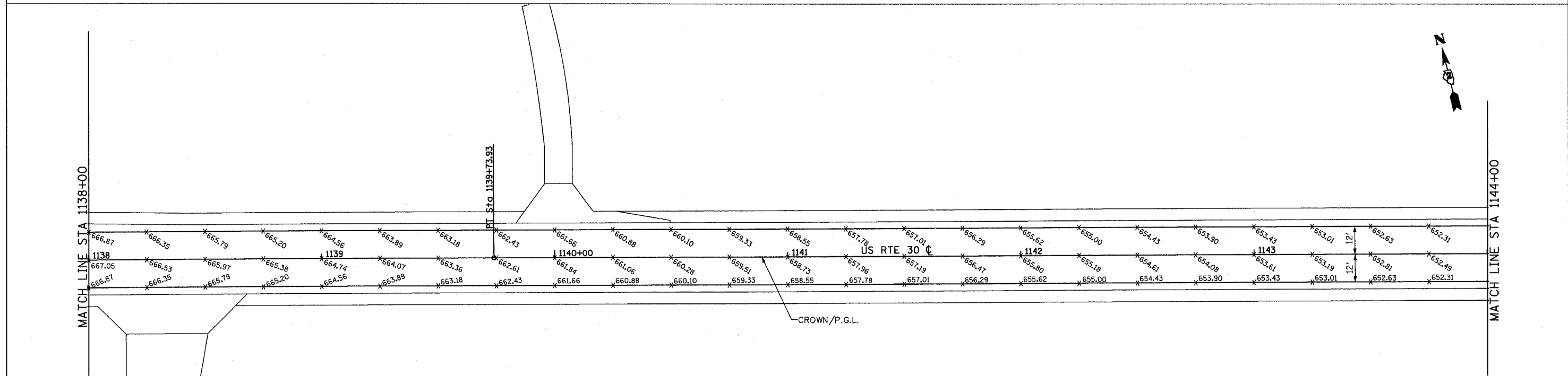
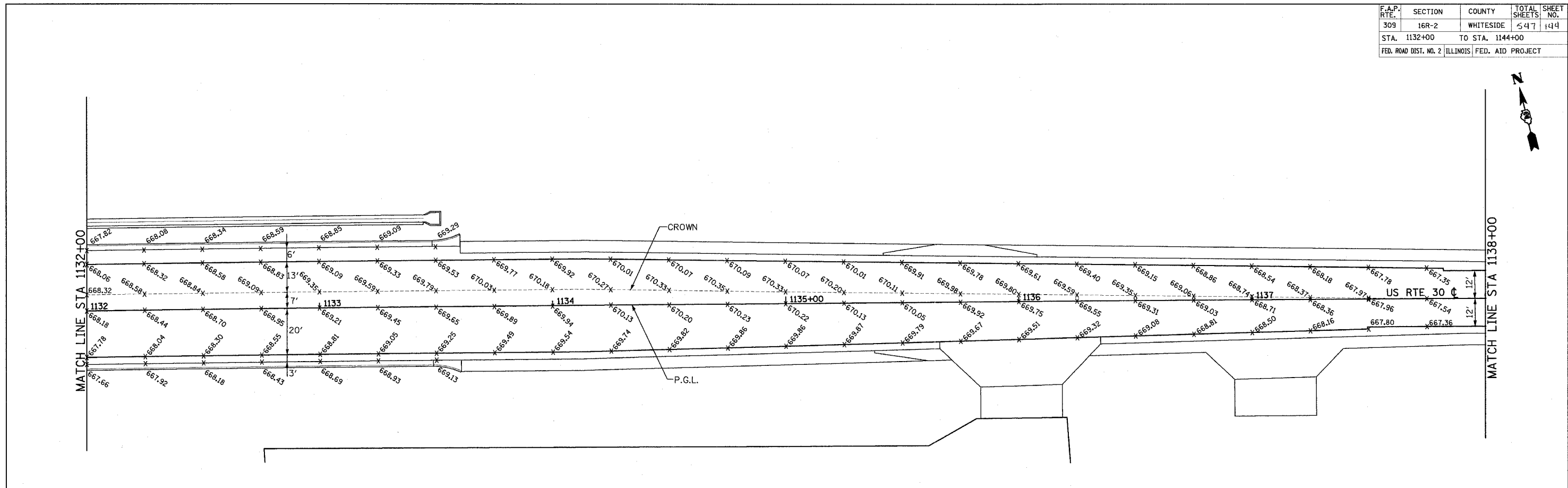
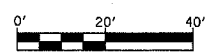


F.A.P. RTE.	SECTION	COUNTY	TOTAL SHEETS	SHEET NO.
309	16R-2	WHITESIDE	547	144
STA. 1132+00		TO STA. 1144+00		
FED. ROAD DIST. NO. 2		ILLINOIS	FED. AID PROJECT	



- NOTES:
- ELEVATION SHOWN AT 25 FT. SPACES, TYPICAL.
 - CROWN VARIES FROM CENTERLINE OF F.A.P. 309 (U.S. 30) TO LEFT EDGE OF TURN LANE, STA. 1134+13.57 TO 1137+13.57.
 - SEE PAVEMENT MARKING PLANS FOR ADDITIONAL INFORMATION.



REVISIONS	
NAME	DATE

ILLINOIS DEPARTMENT OF TRANSPORTATION
 PAVEMENT GRADING PLAN
 FAP ROUTE 309 (US 30)
 SECTION 16R-2
 EAST CONTRACT
 FROM 0.2 MILE EAST OF JACKSON ST.
 TO FRENCH CREEK, WHITESIDE COUNTY

SCALE: 1=20
 DATE 10/13/05

DRAWN BY BRD
 CHECKED BY RDY