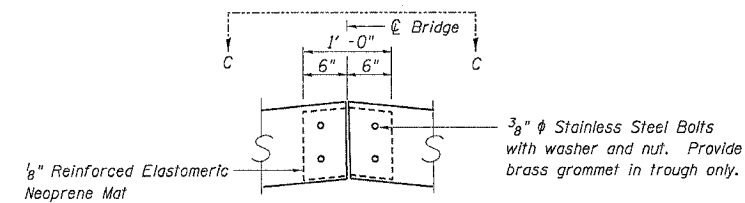
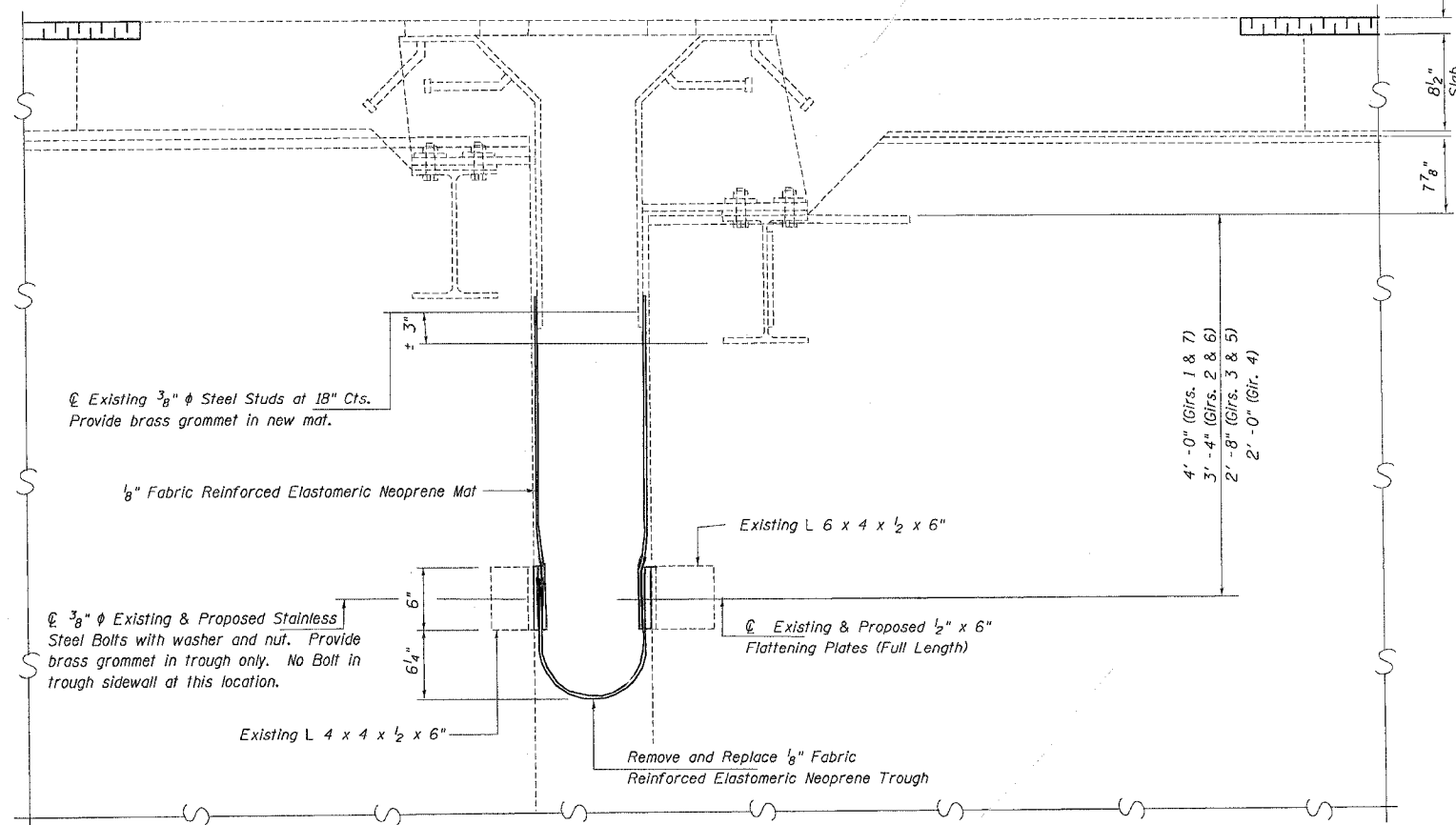
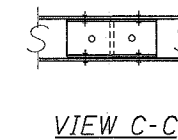


| F.A.I. RTE.              | SECTION       | COUNTY  | TOTAL SHEETS | SHEET NO. |
|--------------------------|---------------|---|--------------|-----------|
| 180                      | 06-3.78-1BM-1 |   | 15           | 12        |
| STA. _____ TO STA. _____ |               | FED. ROAD DIST. NO. _____ ILLINOIS FED. AID PROJECT |              |           |
| Putnam Counties          |               |   |              |           |

New 2" POLYMERIZED BITUMINOUS CONCRETE SURFACE COURSE, SUPERPAVE, MIX "D", N70 and new Sheet Waterproofing Membrane System



TROUGH SPLICE DETAIL

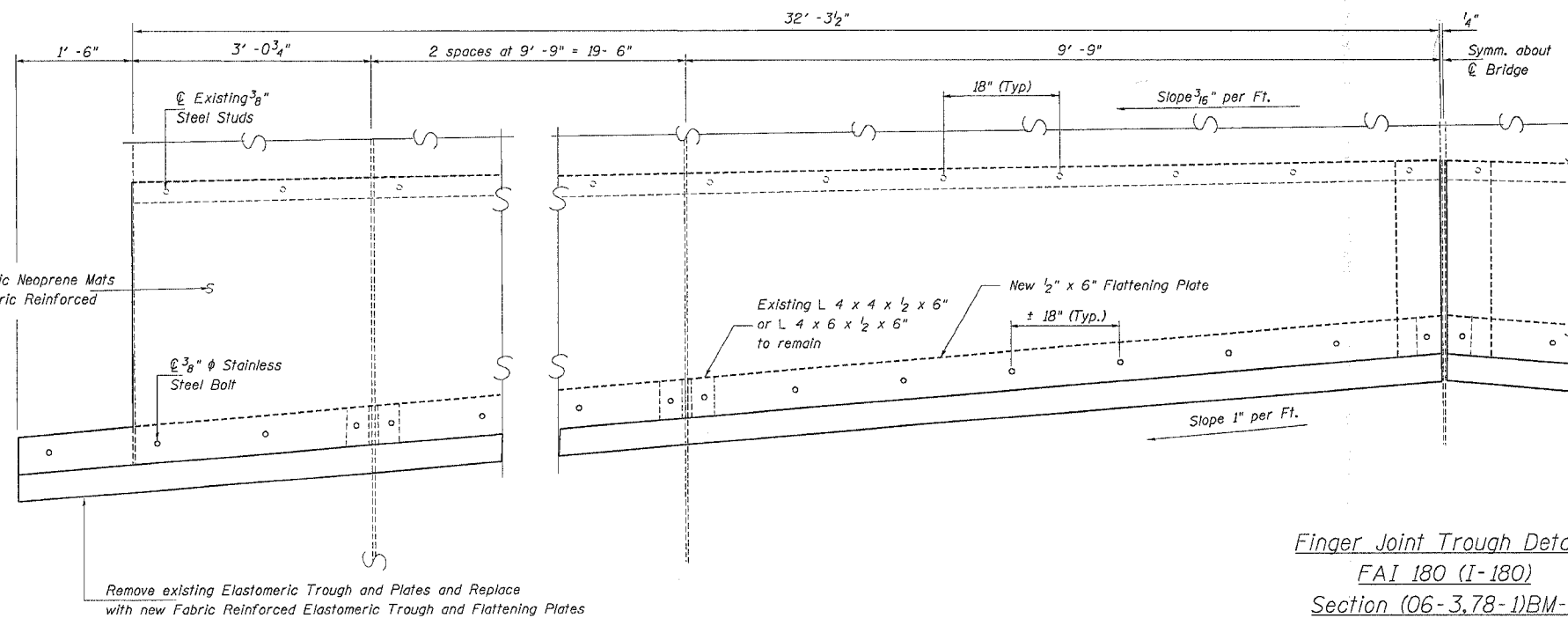


SECTION B-B AT PIERS 3,6,9 & 12

Bill of Material

| Item                                 | Unit     | Quantity |
|--------------------------------------|----------|----------|
| Fabric Reinforced Elastomeric Trough | Lin. Ft. | 276      |

Remove existing Elastomeric Neoprene Mats and Replace with new Fabric Reinforced Elastomeric Trough Flaps



Finger Joint Trough Details  
FAI 180 (I-180)  
Section (06-3.78-1)BM-1  
Bureau & Putnam Counties  
Structure No. 078-0001