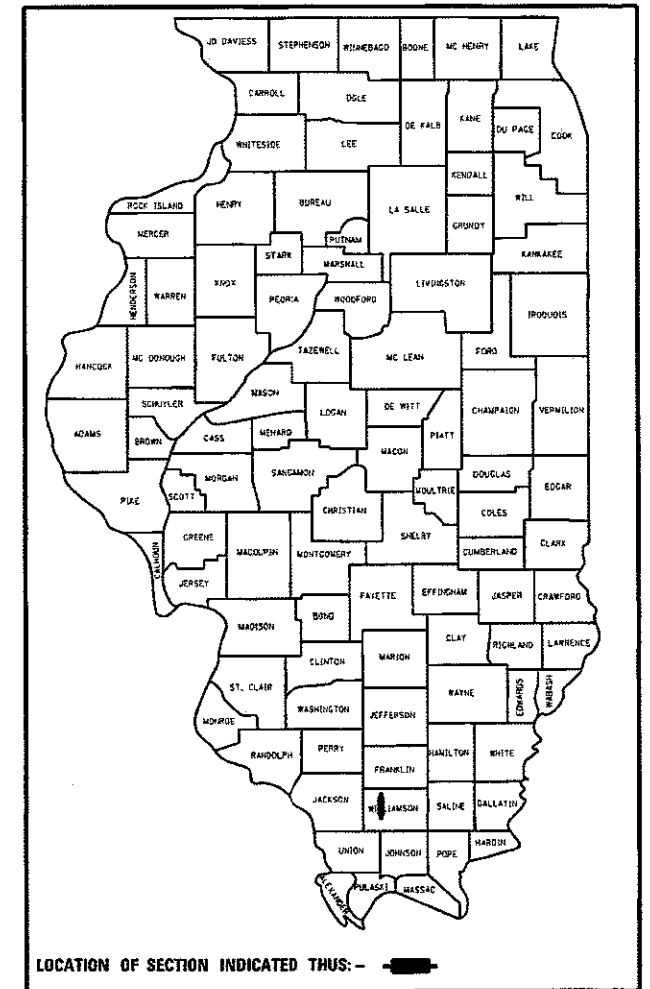


STATE OF ILLINOIS  
DEPARTMENT OF TRANSPORTATION

F.A.P. RTE.	SECTION	COUNTY	TOTAL SHEETS	SHEET NO.
726	130CLV-1	WILLIAMSON	11	1
		ILLINOIS	CONTRACT NO. 78628	

D-99-015-18



FOR INDEX OF SHEETS, SEE SHEET NO. 3  
FOR SUMMARY OF QUANTITIES, SEE SHEET NO. 4-5  
FOR STRUCTURAL PAVEMENT DESIGN INFORMATION, SEE SHEET NO. NA

**PROPOSED  
HIGHWAY PLANS**

FAP 726 ROUTE IL 148  
SECTION 130CLV-1

CULVERT REPLACEMENT  
WILLIAMSON COUNTY

C-99-028-18

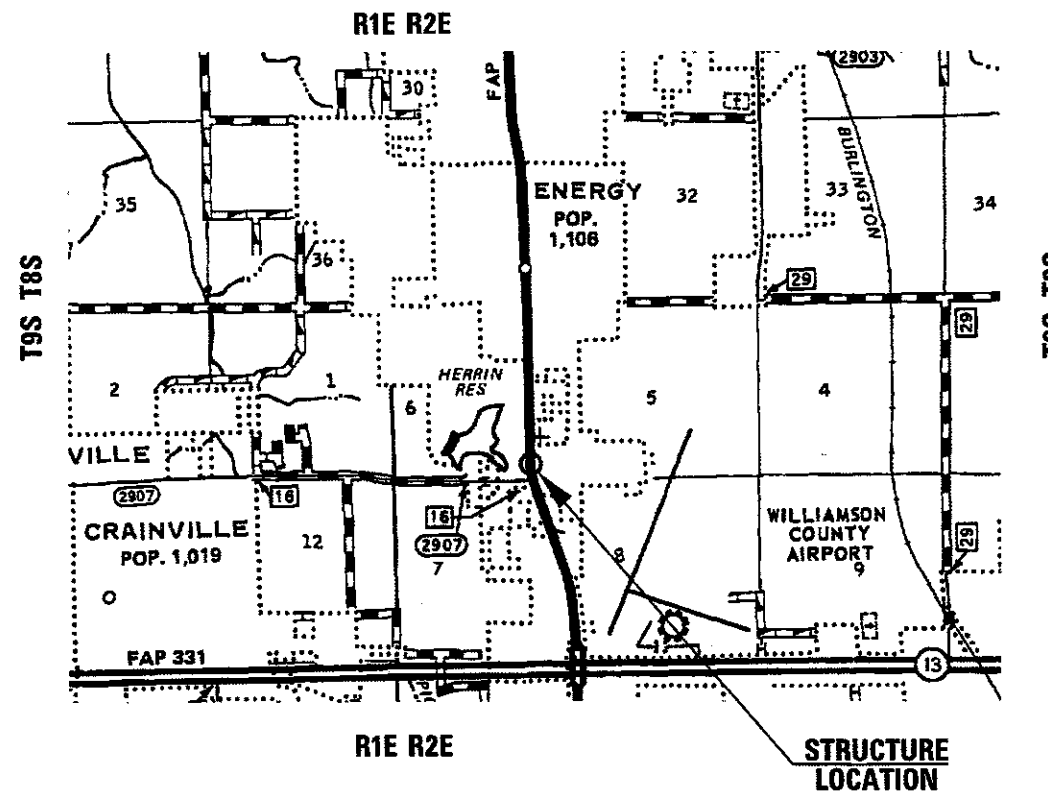
**TRAFFIC DATA**

IL 148 WILLIAMSON COUNTY

IL-148: MP 6.69 TO 7.90			
NORTH OF THE IL 13 IL 148 INTERSECTION			
	2015	2018	2038
PV =	14,560	15,005	18,300
SU =	350	360	440
MU =	190	195	240
ADT =	15,100	15,560	18,980

**TOWNSHIPS**

WEST MARION  
(ENERGY/HERRIN)



DESIGN DESIGNATION : NA  
COORDINATE SYSTEM : NA  
POSTED SPEED : 45 MPH

J.U.L.I.E.  
JOINT UTILITY LOCATION INFORMATION FOR EXCAVATION  
1-800-892-0123  
OR 811

PROJECT ENGINEER CHARLES STEIN ..... 618-351-5210  
PROJECT MANAGER DARRYL LEFTWICH .. 618-351-5291

GROSS LENGTH = 55.0 FT  
NET LENGTH = 55.0 FT

CONTRACT NO. 78628

STATE OF ILLINOIS  
DEPARTMENT OF TRANSPORTATION

SUBMITTED Dec 13 20 17

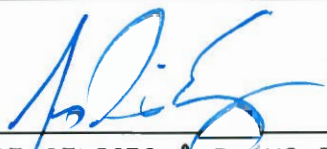
*Jeffrey L. Keim*  
REGION FIVE ENGINEER


Feb 2 20 18  
*Scott A. Etk*  
ENGINEER OF DESIGN AND ENVIRONMENT


Feb 2 20 18  
*Paul P. Ch...*  
DIRECTOR OF PROGRAM DEVELOPMENT

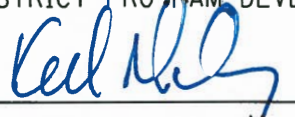
PRINTED BY THE AUTHORITY  
OF THE STATE OF ILLINOIS


MODEL: Default  
FILE NAME: p:\IL08\FED\INTEG\illinois.gov\FWID\DOT\Documents\DOT Offices\District 9\Projects\78628\CAD\data\CAD\sheet\DP 78628\_51egs.dgn


Prepared By:   
DISTRICT STUDIES & PLANS ENGINEER


Examined By:   
DISTRICT LAND ACQUISITION ENGINEER

Examined By:   
DISTRICT PROGRAM DEVELOPMENT ENGINEER

Examined By:   
DISTRICT OPERATIONS ENGINEER

Examined By:   
DISTRICT PROJECT IMPLEMENTATION ENGINEER

Examined By:   
DISTRICT CONSTRUCTION ENGINEER

Examined By:   
DISTRICT MATERIALS ENGINEER

USER NAME = Leftwichdt	DESIGNED -	REVISED -
	DRAWN -	REVISED -
PLOT SCALE = 100.0000' / in.	CHECKED -	REVISED -
PLOT DATE = 12/7/2017	DATE -	REVISED -

**STATE OF ILLINOIS  
DEPARTMENT OF TRANSPORTATION**

SCALE:	SHEET	OF	SHEETS	STA.	TO STA.	F.A.P. RTE.	SECTION	COUNTY	TOTAL SHEETS	SHEET NO.
						726	130CLV-1	WILLIAMSON	11	2
									CONTRACT NO. 78628	
									ILLINOIS FED. AID PROJECT	

# INDEX OF SHEETS

SHEET NO	DESCRIPTION
1	COVER SHEET
2	SIGNATURE SHEET
3	INDEX OF SHEETS, HIGHWAY STANDARDS, GENERAL NOTES & COMMITMENTS
4-5	SUMMARY OF QUANTITIES
6	TYPICAL SECTION: IL 146
7	SCHEDULE: PAVEMENT QUANTITIES SCHEDULE: PAVEMENT MARKING
8	PLAN VIEW
9	DETAIL - POROUS GRANULAR EMBANKMENT
10	DETAIL - CONCRETE COLLAR
11	DISTRICT DETAIL - 24 FT PCC PAVEMENT

# HIGHWAY STANDARDS

- 000001-06 STANDARD SYMBOLS ABBREVIATIONS & PATTERNS
- 001001-02 AREAS OF REINFORCEMENT BARS
- 420701-03 PAVEMENT WELDED WIRE REINFORCEMENT
- 701426-09 LN CLOSURE MULTI LN-INTERMITTANT OR MOVING OP 45 MPH OR MORE
- 780001-05 TYPICAL PVMT MARKINGS

# GENERAL NOTES

QUANTITIES SHOWN IN THE PLANS FOR PATCHING ARE ESTIMATES. THE ACTUAL AMOUNT OF PATCHING REQUIRED WILL BE DETERMINED BY THE ENGINEER.

FACTORS USED FOR ESTIMATING PLAN QUANTITIES ARE AS FOLLOWS AND SHALL NOT BE USED FOR THE BASIS OF FINAL QUANTITIES:

ALL AGGREGATE 2.05 TONS/CU. YD.

AT ALL LOCATIONS WHERE THE PROPOSED HOT MIX ASPHALT OR CONCRETE PAVEMENT JOINS AN EXISTING HOT MIX ASPHALT OR CONCRETE PAVEMENT, A FULL DEPTH SAWED JOINT SHALL BE CONSTRUCTED. THE COST OF THIS JOINT WILL BE INCLUDED IN THE COST OF THE TYPE OF PAVEMENT BEING CONSTRUCTED.

RECLAIMED ASPHALT PAVEMENT (RAP) WILL NOT BE ALLOWED FOR USE AS AGGREGATE IN AGGREGATE SHOULDERS, TYPE B.

THERE ARE NO AVAILABLE WASTE SITES ON THE EXISTING RIGHT OF WAY WITHIN THE PROJECT LIMITS. DISPOSAL WILL BE THE RESPONSIBILITY OF THE CONTRACTOR AND WASTE MUST BE DISPOSED OF IN ACCORDANCE WITH ARTICLE 202.03 OF THE STANDARD SPECIFICATIONS.

REMOVAL OF EXISTING AGGREGATE SHOULDERS SHALL BE INCLUDED IN THE COST OF EARTH EXCAVATION.

REMOVAL OF HMA SHOULDERS SHALL BE INCLUDED IN THE COST OF PAVEMENT REMOVAL.

A CALCIUM CHLORIDE ACCELERATOR WILL BE ALLOWED FOR THE PCC PAVEMENT, 10". THE CONCRETE SHALL BE CLASS PP-1 OR PP-2 AS PER ARTICLE 1020 OF THE STANDARD SPECIFICATIONS.

COMMITMENTS: NONE

RESIDENT ENGINEER SHALL CONTACT THE FOLLOWING 2 WEEKS PRIOR TO CLOSURE OF IL 148:

WILLIAMSON COUNTY EMA	618-998-2123
WILLIAMSON COUNTY SHERIFF OFFICE	618-998-2150
WILLIAMSON COUNTY FIRE DEPARTMENT	618-997-4802
WILLIAMSON COUNTY AMBULANCE	618-993-3019
CITY OF HERRIN EMERGENCY SERVICES	POLICE 618-942-4132
	FIRE 618-942-6514
VILLAGE OF ENERGY EMERGENCY SERVICES	POLICE 618-942-5833
HERRIN SCHOOL SUPERINTENDENT	618-988-8024
UNITY CHRISTIAN SCHOOL	618-942-3802

MODEL: Default  
 FILE NAME: P:\1108\B&E\BIDD\NTEC\Illinois\gov\PIWDOT\Documents\BIDD\Office\District 9\Project\78628\CADD\Bids\CAD\Sheet\09\_78628-Sheets.dgn

USER NAME = Leftwichd	DESIGNED -	REVISED -	<b>STATE OF ILLINOIS DEPARTMENT OF TRANSPORTATION</b>	F.A.P. RTE.	SECTION	COUNTY	TOTAL SHEETS	SHEET NO.
	DRAWN -	REVISED -		726	130CLV-1	WILLIAMSON	11	3
PLOT SCALE = 100.0000' / in.	CHECKED -	REVISED -		CONTRACT NO. 78628				
PLOT DATE = 12/14/2017	DATE -	REVISED -		SCALE:	SHEET OF SHEETS	STA.	TO STA.	ILLINOIS FED. AID PROJECT

# SUMMARY OF QUANTITIES

COUNTY:	COUNTY:	WILLIAMSON CO
ROUTE:	ROUTE:	IL 148
FUNDING:	FUNDING:	100% STATE
LOCATION:	LOCATION:	RURAL

CODE NUMBER	ITEM DESCRIPTION	UNIT	TOTAL QUANTITY	ROADWAY
				0004
20200100	EARTH EXCAVATION	CU YD	801	801
20700220	POROUS GRANULAR EMBANKMENT	CU YD	752	752
42000060	WELDED WIRE REINFORCEMENT	SQ YD	471	471
42000500	PORTLAND CEMENT CONCRETE PAVEMENT 10"	SQ YD	471	471
44000100	PAVEMENT REMOVAL	SQ YD	471	471
48101620	AGGREGATE SHOULDERS, TYPE B 10"	SQ YD	21	21
50105220	PIPE CULVERT REMOVAL	FOOT	194	194
50800105	REINFORCEMENT BARS	POUND	363	363
54002020	EXPANSION BOLTS 3/4 INCH	EACH	30	30
542A1105	PIPE CULVERTS, CLASS A, TYPE 2 60"	FOOT	194	194
54248510	CONCRETE COLLAR	CU YD	11.8	11.8
67100100	MOBILIZATION	L SUM	1	1

12

MODEL: D:\dtdr\p... FILE NAME: p:\11084\BID\NTEG\Illinois.gov\PWIDOT\Documents\DOT Office\Director 9\Projects\78628\CAD\Drawings\CAD\Drawings\78628-Sheets.dgn

USER NAME = Leftwichd	DESIGNED -	REVISED -
	DRAWN -	REVISED -
PLOT SCALE = 100.0000' / in.	CHECKED -	REVISED -
PLOT DATE = 12/12/2017	DATE -	REVISED -

**STATE OF ILLINOIS  
DEPARTMENT OF TRANSPORTATION**

SCALE:	SHEET	OF	SHEETS	STA.	TO STA.
--------	-------	----	--------	------	---------

F.A.P. RTE. 726	SECTION 130CLV-1	COUNTY WILLIAMSON	TOTAL SHEETS 11	SHEET NO. 4
CONTRACT NO. 78628				
ILLINOIS FED. AID PROJECT				

# SUMMARY OF QUANTITIES - CONT

COUNTY:	COUNTY:	WILLIAMSON CO
ROUTE:	ROUTE:	IL 148
FUNDING:	FUNDING:	100% STATE
LOCATION:	LOCATION:	RURAL
	TOTAL QUANTITY	ROADWAY
		0004

CODE NUMBER	ITEM DESCRIPTION	UNIT	TOTAL QUANTITY	ROADWAY
70101830	TRAFFIC CONTROL AND PROTECTION, STANDARD BLR 21	L SUM	1	1
* 78001100	PAINT PAVEMENT MARKING - LETTERS AND SYMBOLS	SQ FT	27	27
* 78001110	PAINT PAVEMENT MARKING - LINE 4"	FOOT	356	356
X7015005	CHANGEABLE MESSAGE SIGN	CAL DAY	74	74

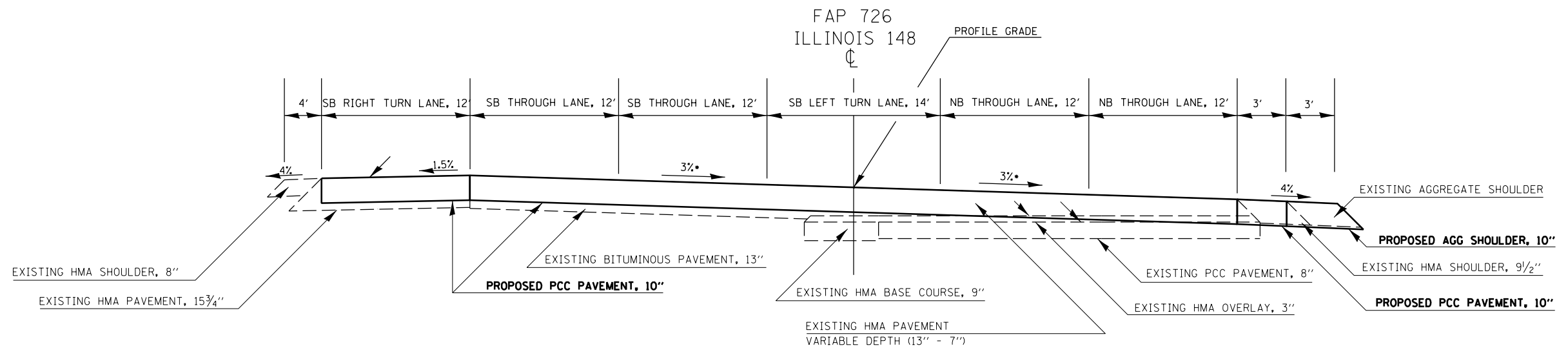
4

\* SPECIALTY ITEM

MODEL: Default  
 FILE NAME: P:\110848\RD\INTG\Illinois.gov\PW\DOT\Documents\DOT\_offices\District\_9\Projects\78628\CAD\Drawings\09\_78628-Sheets.dgn

USER NAME = leftwichd DESIGNED - DRAWN - PLOT SCALE = 100.0000' / in. CHECKED - PLOT DATE = 12/12/2017 DATE -	REVISED - REVISED - REVISED - REVISED -	<b>STATE OF ILLINOIS</b> <b>DEPARTMENT OF TRANSPORTATION</b>	SCALE:      SHEET      OF      SHEETS      STA.      TO STA.	F.A.P. RTE: 726	SECTION 130CLV-1	COUNTY WILLIAMSON	TOTAL SHEETS 11	SHEET NO. 5	
CONTRACT NO. 78628								ILLINOIS FED. AID PROJECT	

# TYPICAL SECTION



\* SUPERELEVATION TRANSITION  
FROM 3% AT STA 117+50 TO 0.32% AT STA 119+00

TYPICAL SECTION FOR  
STA 117+13 TO STA 117+68

TYPICAL MODIFIED FROM CN 98884

MODEL: Default  
 FILE: \\nas101.psu.edu\B&E\BID\NTEC\Illinois\gov\PIV\DOT\Documents\13DOT\Office\13DOT\13DOT\CADD\13DOT\CAD\13DOT\78628\78628-Sheets.dgn

USER NAME = Leftwichdl	DESIGNED -	REVISED -
	DRAWN -	REVISED -
PLOT SCALE = 100.0000' / in.	CHECKED -	REVISED -
PLOT DATE = 12/12/2017	DATE -	REVISED -

**STATE OF ILLINOIS  
DEPARTMENT OF TRANSPORTATION**

SCALE: SHEET OF SHEETS STA. TO STA.

F.A.P. RTE. 726	SECTION 130CLV-1	COUNTY WILLIAMSON	TOTAL SHEETS 11	SHEET NO. 6
CONTRACT NO. 78628				
ILLINOIS FED. AID PROJECT				

## SCHEDULE FOR IL 148 PAVEMENT QUANTITIES

R148	SECTION LENGTH ( INFO ONLY)	PAVEMENT REMOVAL	PCC PAVEMENT 10"	WIRE REINFORCEMENT	AGG SHLD TYPE B  10"
	FEET	SQ YD	SQ YD	SQ YD	SQ YD
<u>IL 148 NEAR ENERGY</u>					
STA 117+13.00 TO STA 117+68.00	55.00	471	471	471	21
		471	471	471	21

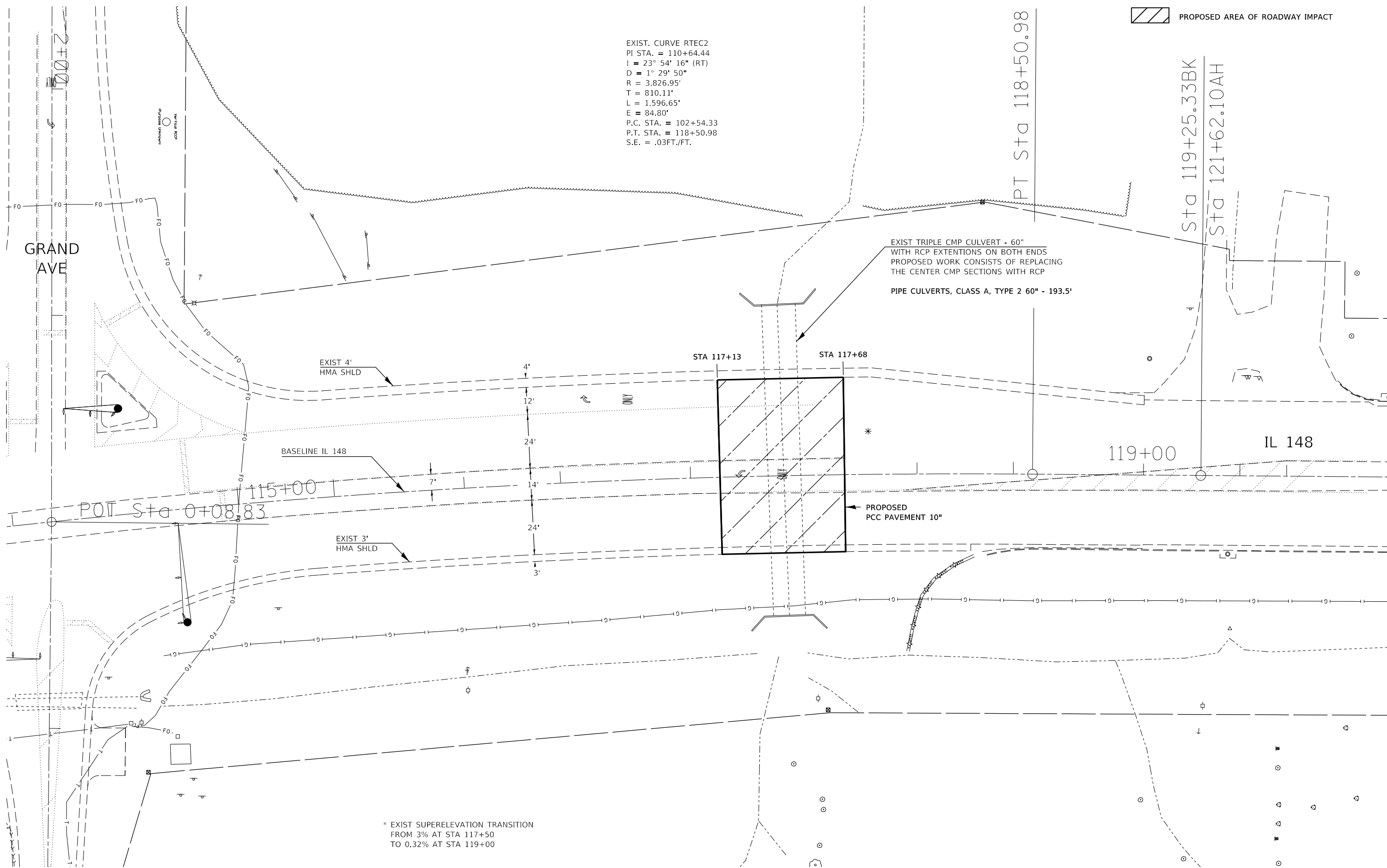
## SCHEDULE FOR IL 148 PAVEMENT MARKING

R148	SECTION LENGTH ( INFO ONLY)	PAVEMENT MARKING LINE 4"			PAVEMENT MARKING LETTERS & SYMBOLS
		SKIP DASH WHITE	SOLID WHITE	SOLID YELLOW	
	FEET	FOOT	FOOT	FOOT	SQ FT
<u>IL 148 NEAR ENERGY</u>					
STA 117+13.00 TO STA 117+68.00	55.0	26	220	110	27.4
		26	220	110	27.4
		356			

MODEL: Default  
 FILE: \\nas01c.pva.illinois.gov\PIV\DOT\Documents\DOT\_Offices\Director\_9\Projects\78628\CADDData\CAD\Sheets\09\_78628-Sheets.dgn

EXIST. CURVE RTEC2  
 PI STA. = 110+64.44  
 I = 23° 54' 16" (RT)  
 D = 1° 29' 50"  
 R = 3,826.95'  
 T = 810.11'  
 E = 84.80'  
 P.C. STA. = 102+54.33  
 P.T. STA. = 118+50.98  
 S.E. = .03FT./FT.

 PROPOSED AREA OF ROADWAY IMPACT



MODEL: R:\p\050546...  
 FILE: NAME: P:\050546\050546\050546\050546\CADD\DATA\CAD\sheet09\_78628-Sheets.dgn  
 PROJECT: 78628\CADD\DATA\CAD\sheet09\_78628-Sheets.dgn

USER NAME = Leftwichd	DESIGNED -	REVISED -
PLOT SCALE = 40.0000 ' / in.	DRAWN -	REVISED -
PLOT DATE = 12/12/2017	CHECKED -	REVISED -
	DATE -	REVISED -

**STATE OF ILLINOIS  
 DEPARTMENT OF TRANSPORTATION**

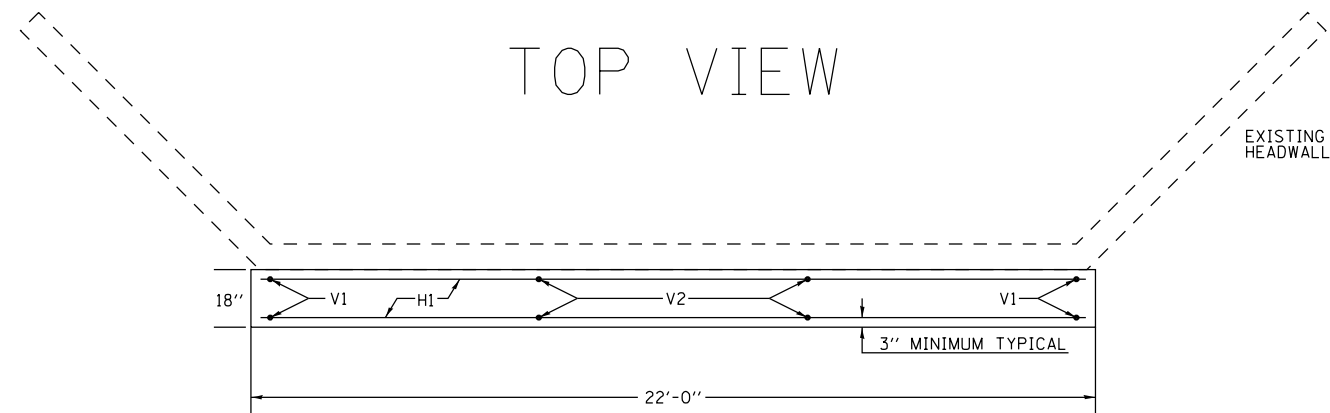
SCALE: SHEET OF SHEETS STA. TO STA.

F.A.P. RTE.	SECTION	COUNTY	TOTAL SHEETS	SHEET NO.
726	130CLV-1	WILLIAMSON	11	8
CONTRACT NO. 78628			ILLINOIS FED. AID PROJECT	



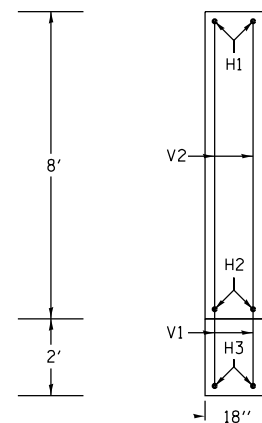
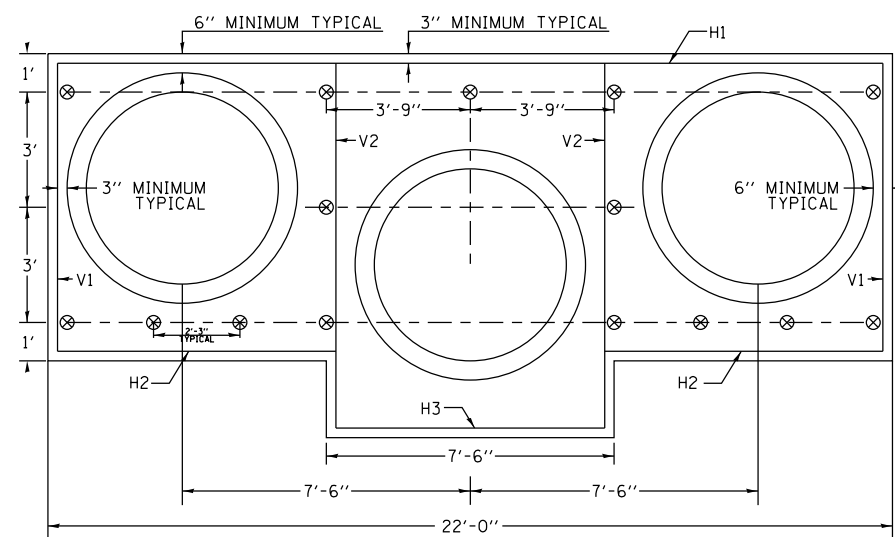


# DETAIL: CONCRETE COLLAR

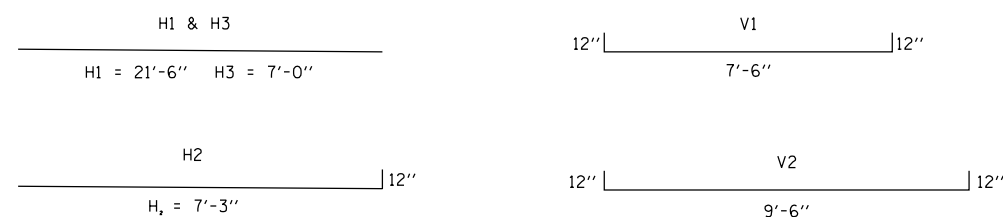


FRONT VIEW

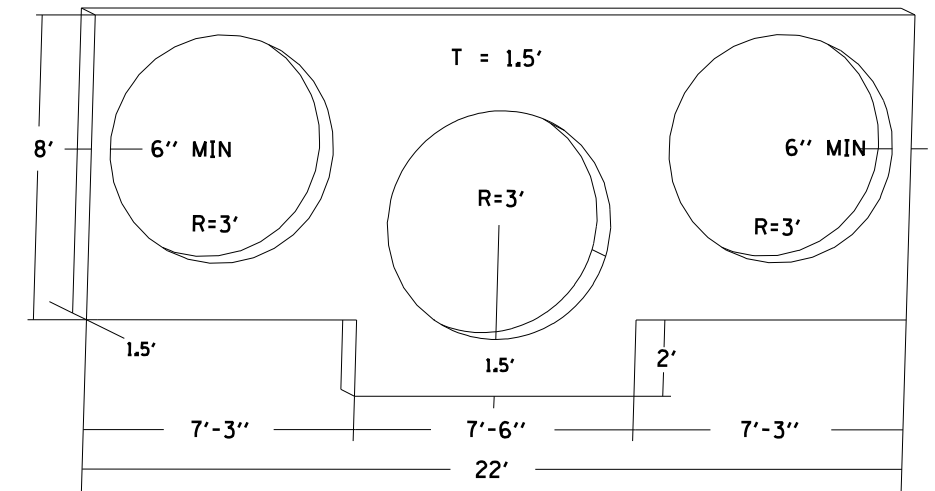
SIDE VIEW



## BAR DETAILS



## ISOMETRIC VIEW



## BILL OF MATERIAL FOR TWO (2) CONCRETE COLLARS

BAR	No	SIZE *	LENGTH
H1	4	#5	21' - 6"
H2	8	#5	8' - 3"
H3	4	#5	7' - 0"
V1	8	#5	9' - 6"
V2	8	#5	11' - 6"
CONCRETE COLLAR			11.8 CU YD
REINFORCEMENT BARS			363 LBS
EXPANTION BOLTS, 3/4"			30 EACH

\* SEE STANDARD 001001 FOR ADDITIONAL REBAR INFORMATION

MODEL: Default  
 FILE: \\mllb08a01\BID\NTEC\Illinois.gov\PI\DOT\Documents\BIDD\Office\BID\178628\CADD\BIDD\CAD\Sheet\09\_78628-Sheets.dgn

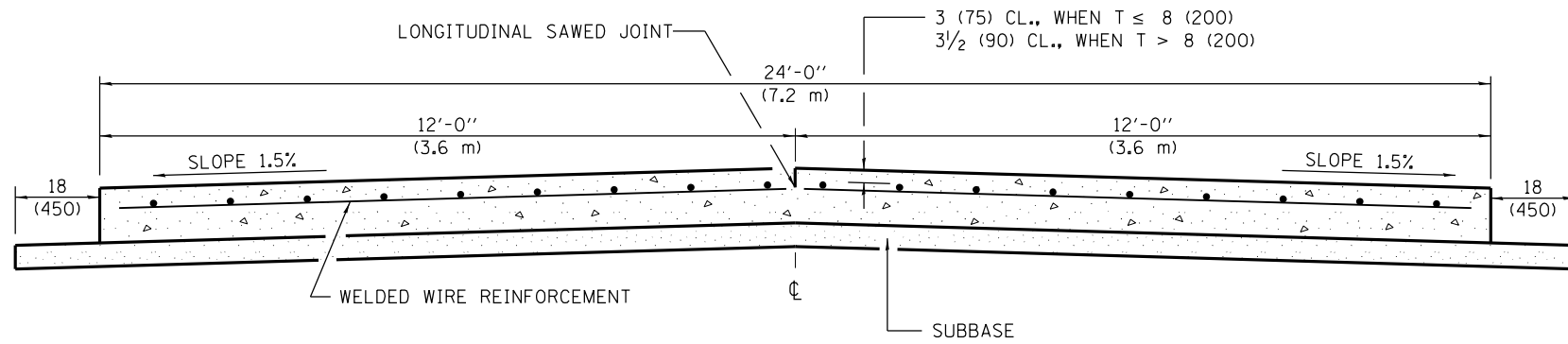
USER NAME = Leftwichd	DESIGNED -	REVISED -
PLOT SCALE = 100.0000' / in.	DRAWN -	REVISED -
PLOT DATE = 12/12/2017	CHECKED -	REVISED -
	DATE -	REVISED -

**STATE OF ILLINOIS  
DEPARTMENT OF TRANSPORTATION**

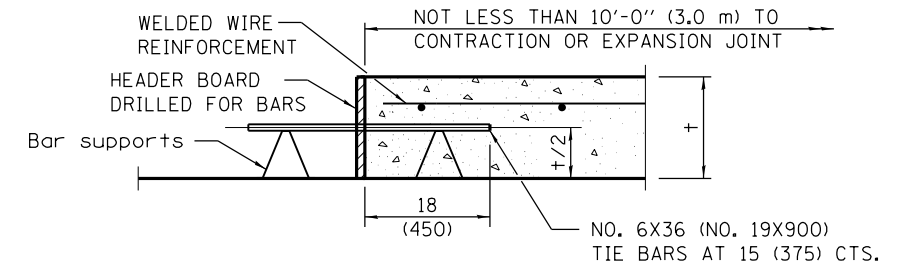
SCALE: SHEET OF SHEETS STA. TO STA.

F.A.P. RTE. 726	SECTION 130CLV-1	COUNTY WILLIAMSON	TOTAL SHEETS 11	SHEET NO. 10
CONTRACT NO. 78628				
ILLINOIS FED. AID PROJECT				

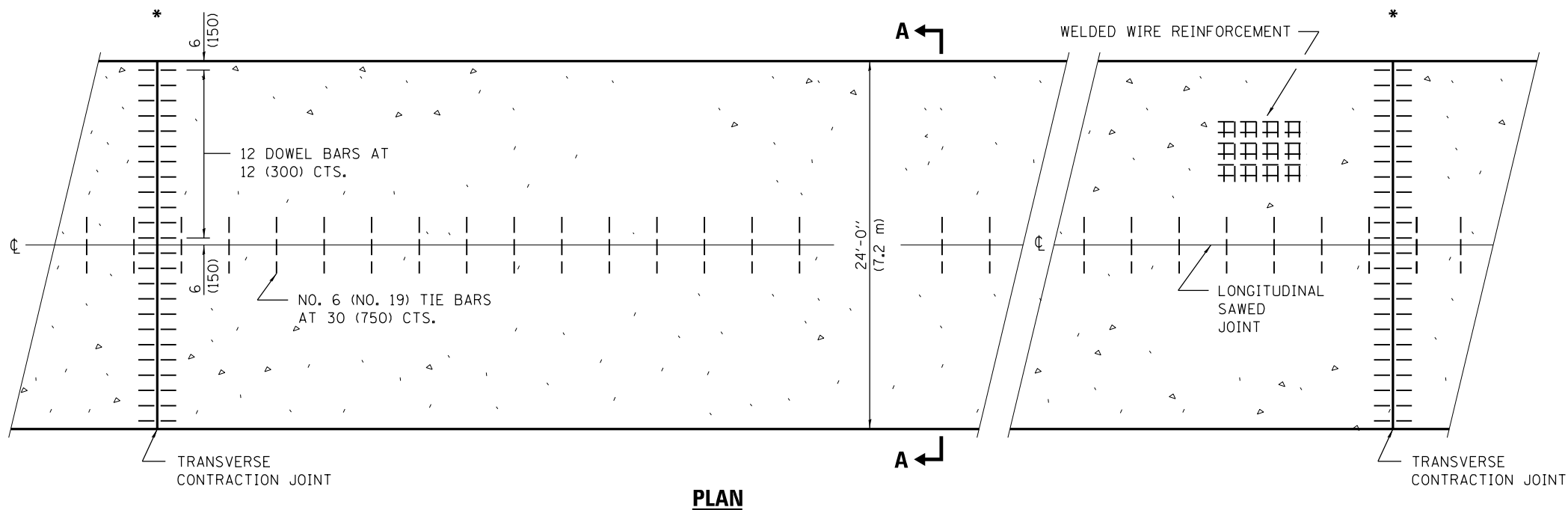
# 24' (7.2 m) PCC PAVEMENT OVER BOX CULVERT



**SECTION A-A**  
(TYPICAL 2-LANE WITH SHOULDERS)



\* **TRANSVERSE CONSTRUCTION JOINT**



**PLAN**

**GENERAL NOTES**

SEE STANDARD 420001 FOR DETAILS NOT SHOWN.

SEE STANDARD 420701 FOR WELDED WIRE REINFORCEMENT DETAILS.

ALL DIMENSIONS ARE IN INCHES (MILLIMETERS) UNLESS OTHERWISE SHOWN.

\* ONE TRANSVERSE CONSTRUCTION JOINT SHALL BE PLACED AT THE MIDDLE OF THE PROPOSED PCC PAVEMENT, (~STA 117+40.5)

NO. 6 TIE BARS SHALL BE PLACED AT ALL LANE LINES AND AT THE RT EDGE OF PAVEMENT. THE COST OF ALL DOWEL BARS AND TIE BARS SHALL BE INCLUDED IN THE COST PCC PAVEMENT 10"

**REVISIONS**

DRAWN	11-9-17

MODEL: Default  
FILE NAME: p:\u0000\B&E\BIDDING\TEC\Illinois\pav\RW\DOT\Documents\130CLV-1\130CLV-1.dwg  
PROJECT: 130CLV-1\130CLV-1.dwg  
DATE: 12/14/2017

USER NAME = Leftwichd	DESIGNED -	REVISED -	
	DRAWN -	REVISED -	
PLOT SCALE = 100.0000' / in.	CHECKED -	REVISED -	
PLOT DATE = 12/14/2017	DATE -	REVISED -	

**STATE OF ILLINOIS  
DEPARTMENT OF TRANSPORTATION**

SCALE:      SHEET      OF      SHEETS      STA.      TO      STA.

F.A.P. RTE.	SECTION	COUNTY	TOTAL SHEETS	SHEET NO.
726	130CLV-1	WILLIAMSON	11	11
CONTRACT NO. 78628				
ILLINOIS FED. AID PROJECT				