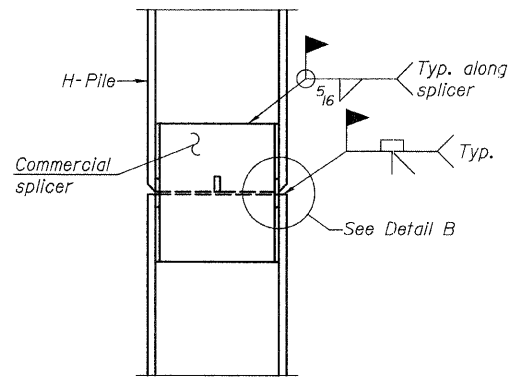
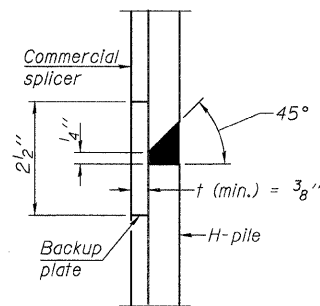


STEEL PILE TABLE

Designation	Depth <i>d</i>	Flange width <i>b_f</i>	Web and Flange thickness <i>t</i>	Encasement diameter <i>A</i>
HP 14x117	14 ¹ / ₄ "	14 ⁷ / ₈ "	1 ³ / ₁₆ "	30"
x102	14"	14 ³ / ₄ "	1 ¹ / ₁₆ "	30"
x89	13 ⁷ / ₈ "	14 ³ / ₄ "	5 ⁵ / ₈ "	30"
x73	13 ⁵ / ₈ "	14 ⁵ / ₈ "	1 ¹ / ₂ "	30"
HP 12x84	12 ¹ / ₄ "	12 ¹ / ₄ "	1 ¹ / ₁₆ "	24"
x74	12 ³ / ₈ "	12 ¹ / ₄ "	5 ⁵ / ₈ "	24"
x63	12"	12 ¹ / ₈ "	1 ¹ / ₂ "	24"
x53	11 ³ / ₄ "	12"	7 ¹ / ₁₆ "	24"
HP 10x57	10"	10 ¹ / ₄ "	9 ⁹ / ₁₆ "	24"
x42	9 ³ / ₄ "	10 ¹ / ₈ "	7 ¹ / ₁₆ "	24"
HP 8x36	8"	8 ⁵ / ₈ "	7 ¹ / ₁₆ "	18"

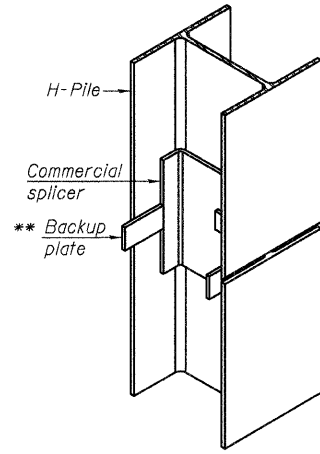


ELEVATION

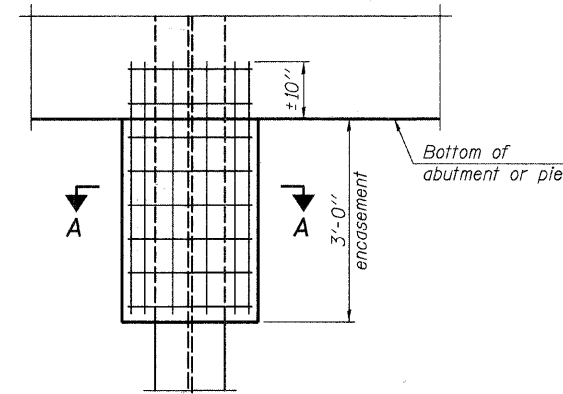


DETAIL "B"

WELDED COMMERCIAL SPLICE

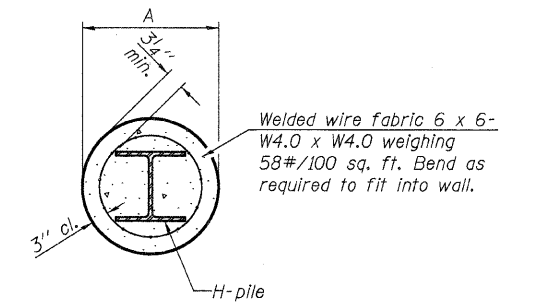


ISOMETRIC VIEW



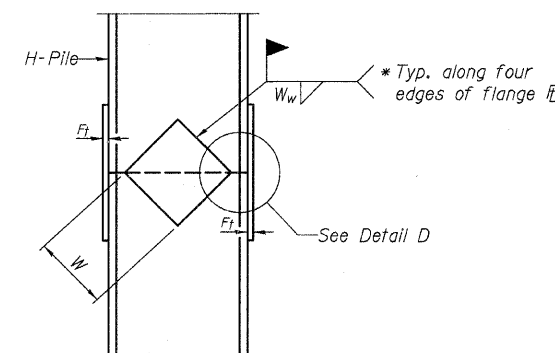
ELEVATION

PILE ENCASEMENT

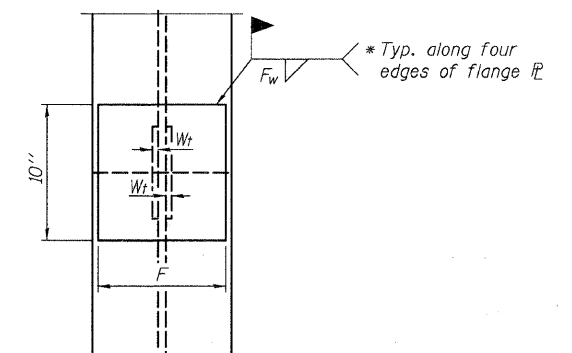


SECTION A-A

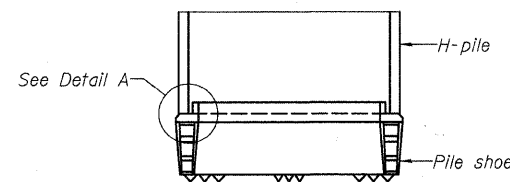
Note:
Forms for encasement may be omitted when soil conditions permit.



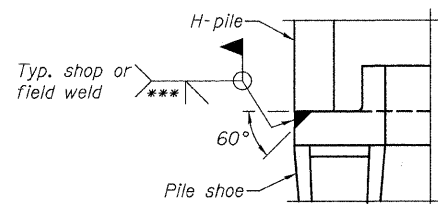
ELEVATION



END VIEW

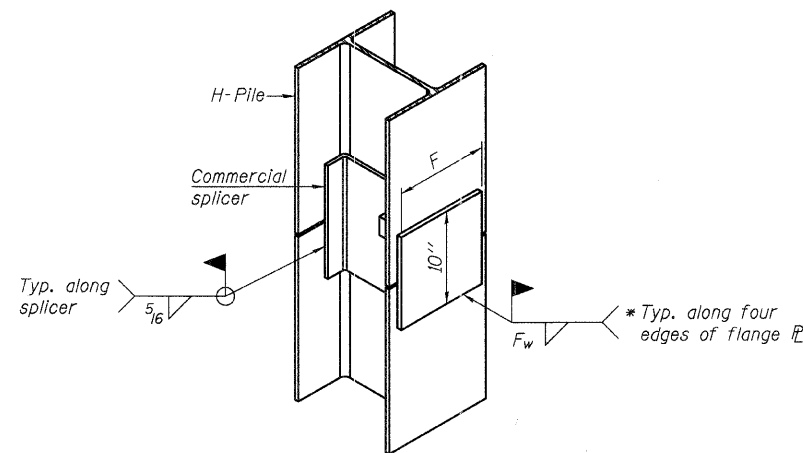


ELEVATION



DETAIL A

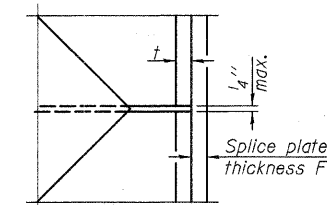
H-PILE SHOE ATTACHMENT



ISOMETRIC VIEW

WELDED COMMERCIAL SPLICE ALTERNATE

- * Interrupt welds 1/4" from end of web and/or each flange.
- ** Remove portions of backup plates that extend outside the flanges.
- *** Weld size per pile shoe manufacturer (5/16" min.).



DETAIL D

WELDED PLATE FIELD SPLICE

Designation	F	F _t	F _w	W	W _t	W _w
HP 14x117	12 ¹ / ₂ "	1"	7 ⁷ / ₈ "	7 ³ / ₄ "	5 ⁵ / ₈ "	1 ¹ / ₂ "
x102	12 ¹ / ₂ "	7 ⁷ / ₈ "	3 ³ / ₄ "	7 ³ / ₄ "	5 ⁵ / ₈ "	1 ¹ / ₂ "
x89	12 ¹ / ₂ "	3 ³ / ₄ "	1 ¹ / ₁₆ "	7 ³ / ₄ "	5 ⁵ / ₈ "	1 ¹ / ₂ "
x73	12 ¹ / ₂ "	5 ⁵ / ₈ "	9 ⁹ / ₁₆ "	7 ³ / ₄ "	5 ⁵ / ₈ "	1 ¹ / ₂ "
HP 12x84	10"	7 ⁷ / ₈ "	1 ¹ / ₁₆ "	6 ¹ / ₂ "	5 ⁵ / ₈ "	1 ¹ / ₂ "
x74	10"	7 ⁷ / ₈ "	1 ¹ / ₁₆ "	6 ¹ / ₂ "	5 ⁵ / ₈ "	1 ¹ / ₂ "
x63	10"	5 ⁵ / ₈ "	1 ¹ / ₂ "	6 ¹ / ₂ "	1 ¹ / ₂ "	3 ³ / ₈ "
x53	10"	5 ⁵ / ₈ "	1 ¹ / ₂ "	6 ¹ / ₂ "	1 ¹ / ₂ "	3 ³ / ₈ "
HP 10x57	8"	3 ³ / ₄ "	9 ⁹ / ₁₆ "	5 ¹ / ₄ "	1 ¹ / ₂ "	3 ³ / ₈ "
x42	8"	5 ⁵ / ₈ "	9 ⁹ / ₁₆ "	5 ¹ / ₄ "	1 ¹ / ₂ "	3 ³ / ₈ "
HP 8x36	7"	5 ⁵ / ₈ "	7 ⁷ / ₁₆ "	4 ¹ / ₄ "	1 ¹ / ₂ "	3 ³ / ₈ "

Note:
The steel H-piles shall be according to AASHTO M270 Grade 50.

F-HP

7-1-10

RHUTASEL and ASSOCIATES, INC.
CONSULTING ENGINEERS • LAND SURVEYORS
CENTRALIA, ILLINOIS FREEBURG, ILLINOIS
ILLINOIS DESIGN FIRM LICENSE NO. 184-000287

DESIGNED - BLT
CHECKED - GLH
DRAWN - JN
CHECKED - 12/14/2011

REVISED -
REVISED -
REVISED -
REVISED -

**STATE OF ILLINOIS
DEPARTMENT OF TRANSPORTATION**

**HP PILE DETAILS
STRUCTURE NO. 096-3456**

F.A.S. ROUTE	SECTION	COUNTY	TOTAL SHEETS	SHEET NO.
2821	07-00117-00-BR	WAYNE	11	11
RAAT JOB NO. 52111			ILLINOIS FED. AID PROJECT	

CONTRACT NO. 95671