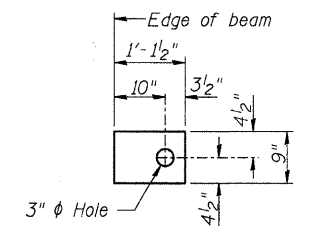
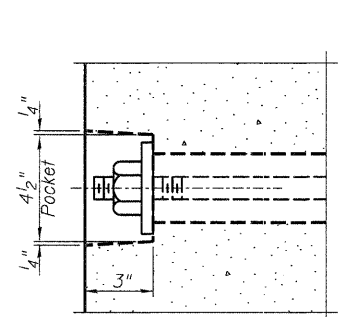


FABRIC BEARING PAD
(Interior)

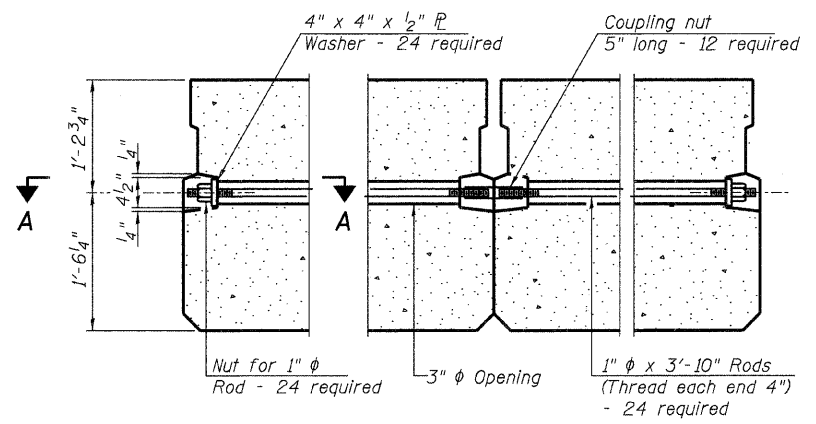


FABRIC BEARING PAD
(Exterior)

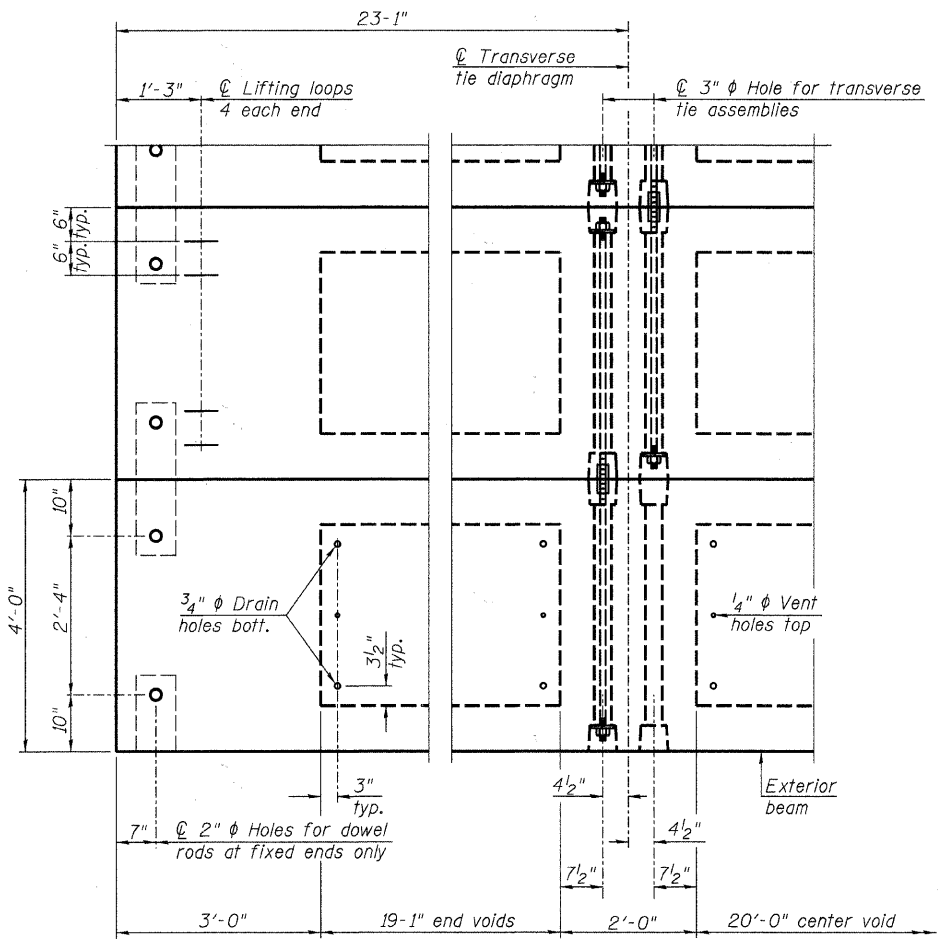
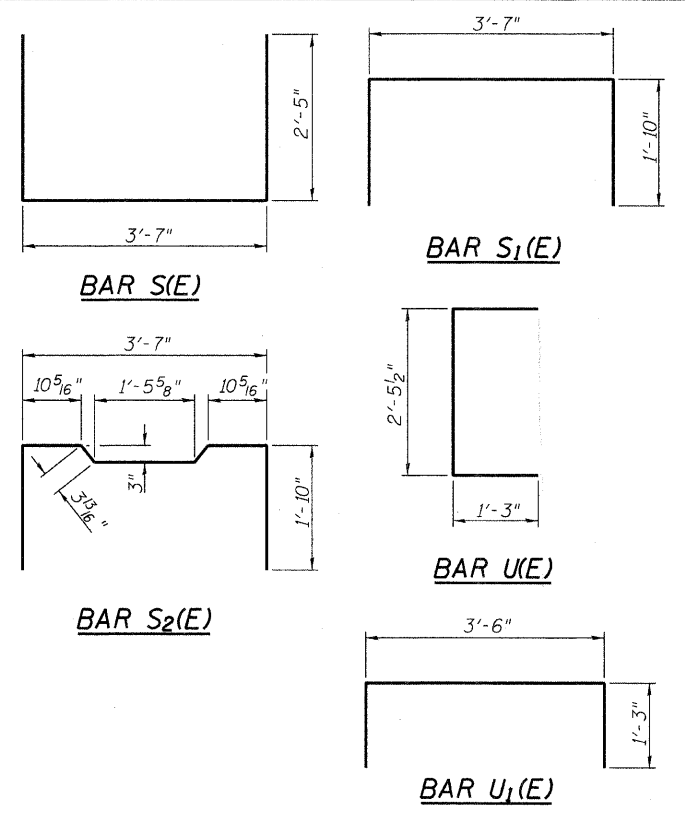
FIXED
Notes: All bearing pads shall be 1" thick.



SECTION A-A

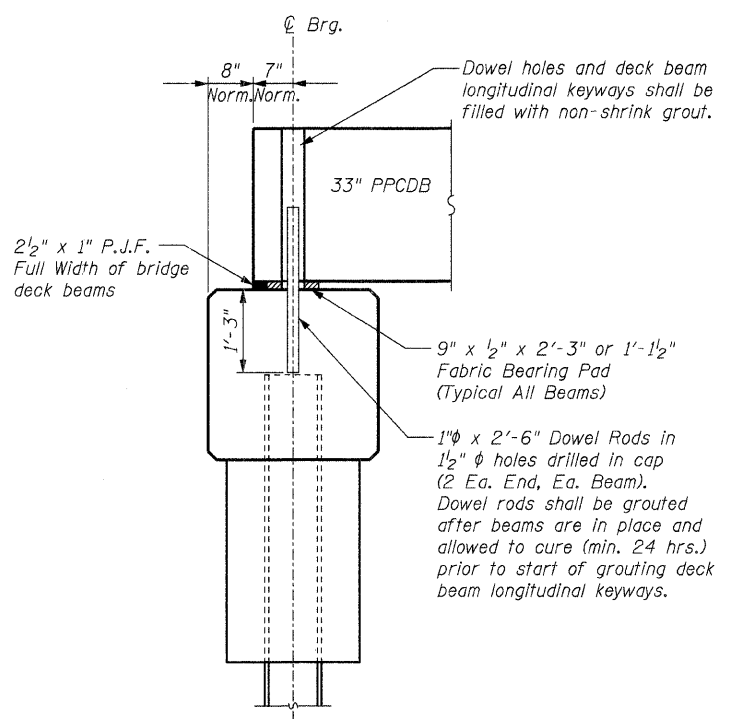


TYPICAL TRANSVERSE TIE ASSEMBLY

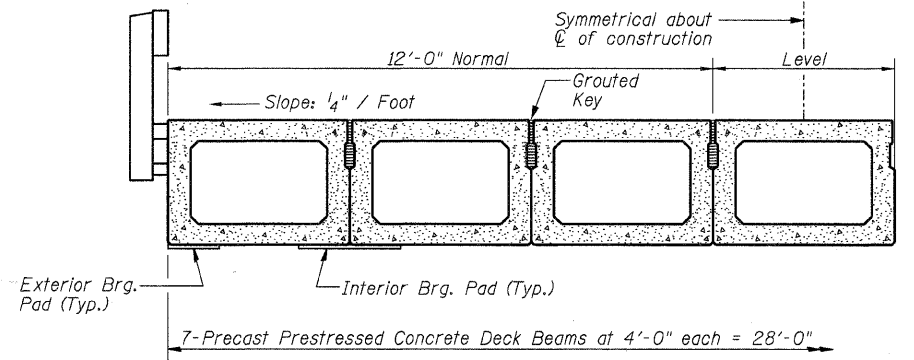


PLAN VIEW

Note: Connect beams in pairs with the transverse tie configuration shown.

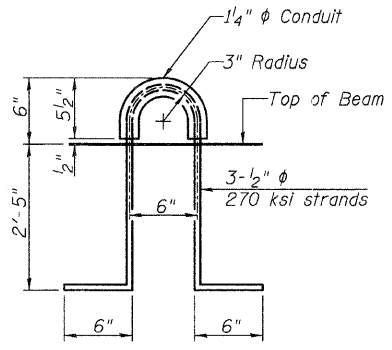


FIXED BEARING ABUTMENT



HALF CROSS SECTION

See Sheet 9 of 11 for the details showing the spacing and mounting of posts and rails to the PPCDB.



LIFTING LOOP DETAIL

NOTES

- Prestressing steel shall be uncoated high strength, low relaxation 7-wire strand, Grade 270. The nominal diameter shall be 1/2" and the nominal cross-sectional area shall be 0.153 sq. in.
- The 1" rods in the transverse tie assembly shall be tightened to a snug fit and the threads set. Pockets on exterior faces of bridge shall be filled with grout after transverse tie assembly is in place.
- Reinforcement bars shall conform to ASTM A 706, Grade 60. (See Special Provisions).
- Two 1/8" fabric adjusting shims of the dimensions of the exterior bearing pad shall be provided for each bearing pad location.
- A minimum 2 1/2" diameter lifting pin shall be used to engage the lifting loops during handling.
- Corrosion Inhibitor, per Article 1020.05(b)(12) and 1021.06 of the Standard Specifications, shall be used in the concrete for precast prestressed concrete deck beams.
- Compressive strength of prestressed concrete, f'c, shall be 6000 psi.
- Compressive strength of prestressed concrete at release, f'cl, shall be 5000 psi.

BILL OF MATERIAL

Precast Prestressed Conc. Deck Bms. (33" depth)	Sq. Ft.	1909
---	---------	------

PD-3348-OD

7-1-10

RHUTASEL and ASSOCIATES, INC.
CONSULTING ENGINEERS • LAND SURVEYORS
CENTRALIA, ILLINOIS
ILLINOIS DESIGN FIRM LICENSE NO. 184-000287

DESIGNED - BLT	REVISED -
CHECKED - GLH	REVISED -
DRAWN - JN	REVISED -
CHECKED - 12/14/2011	REVISED -

STATE OF ILLINOIS
DEPARTMENT OF TRANSPORTATION

33" x 48" PPC DECK BEAM DETAILS
STRUCTURE NO. 096-3456

F.A.S. ROUTE	SECTION	COUNTY	TOTAL SHEETS	SHEET NO.
2821	07-00117-00-BR	WAYNE	11	8
RAAT JOB NO. 52111			ILLINOIS FED. AID PROJECT	
			CONTRACT NO. 95671	