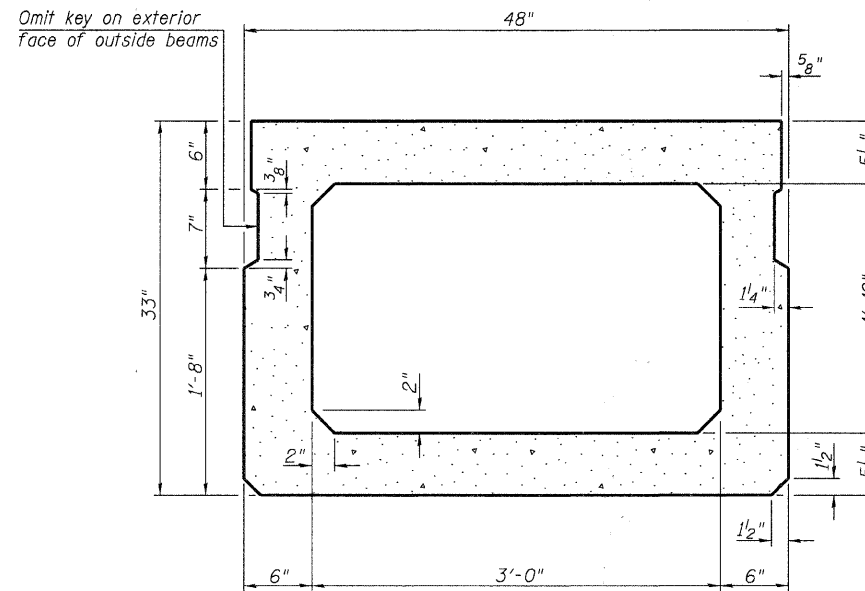
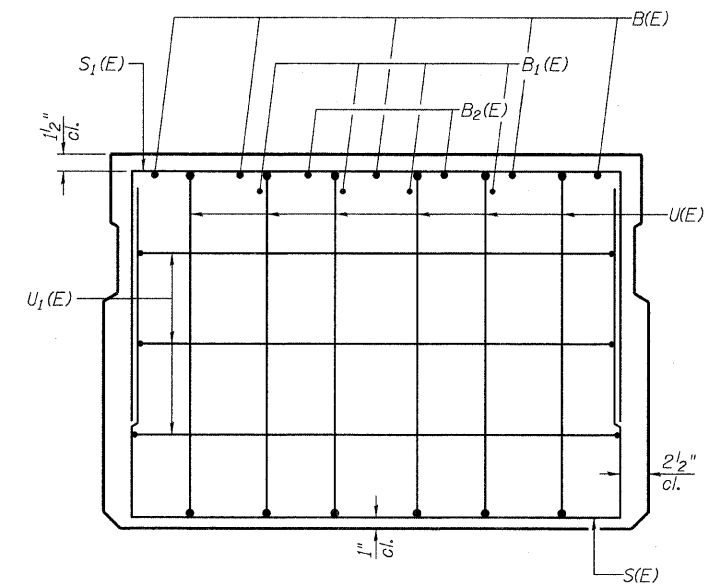


**SECTION A-A**

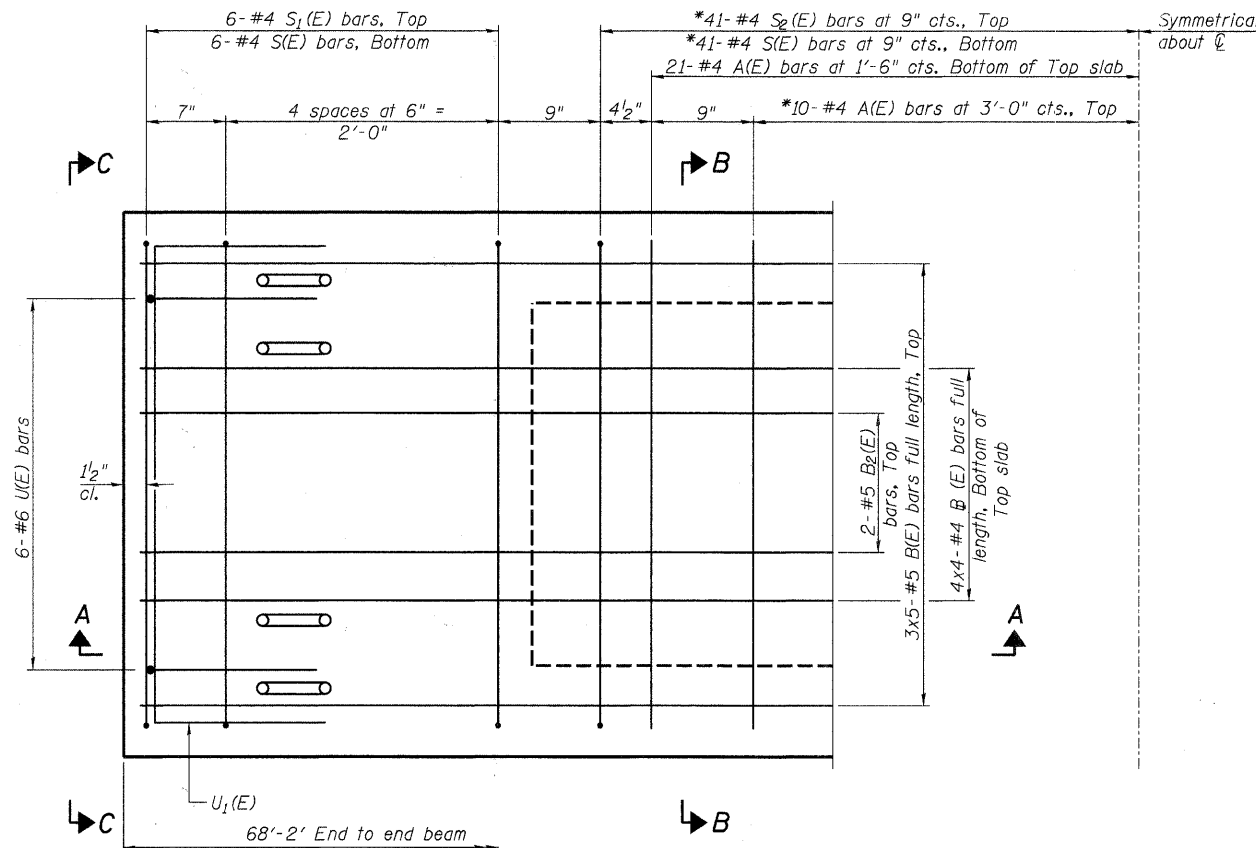
\* plus 1 bar at  $\varnothing$



**SECTION B-B**  
(Showing dimensions)



**VIEW C-C**

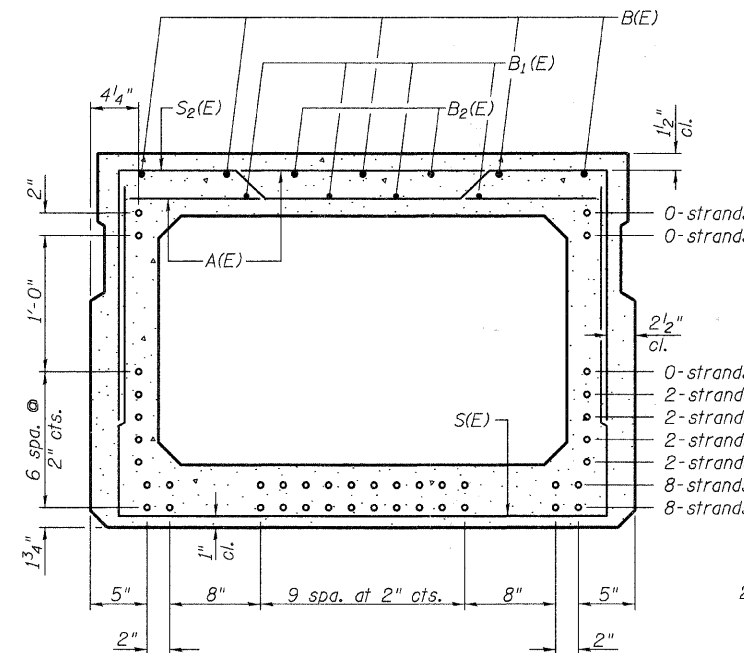


**PLAN VIEW**

Note: Spacing of S(E) and S<sub>2</sub>(E) bars may be adjusted up to 4" in the immediate area of the transverse tie diaphragms to miss the block outs for the transverse ties.

**MINIMUM BAR LAP**

#4 bar = 2'-0"  
#5 bar = 2'-6"



**SECTION B-B**

(Showing reinforcement and permissible strand locations)

Note: Place the number of strands specified in each row symmetrically about the centerline of beam in the permissible strand locations shown.

**BAR LIST**  
**ONE BEAM ONLY**  
(For information only)

Bar	No.	Size	Length	Shape
A(E)	63	#4	3'-7"	—
B(E)	15	#5	24'-4"	—
B <sub>1</sub> (E)	16	#4	18'-7"	—
B <sub>2</sub> (E)	4	#5	10'-0"	—
S(E)	95	#4	8'-5"	U
S <sub>1</sub> (E)	12	#4	7'-3"	U
S <sub>2</sub> (E)	83	#4	7'-6"	U
U(E)	12	#6	5'-0"	C
U <sub>1</sub> (E)	6	#4	6'-0"	C

Note: See sheet 8 of 11 for additional details and Bill of Material.

PD-3348-0

7-1-10

**RHUTASEL and ASSOCIATES, INC.**  
CONSULTING ENGINEERS • LAND SURVEYORS  
CENTRALIA, ILLINOIS      FREEBURG, ILLINOIS  
ILLINOIS DESIGN FIRM LICENSE NO. 184-000287

DESIGNED -	BLT	REVISED -	
CHECKED -	GLH	REVISED -	
DRAWN -	JN	REVISED -	
CHECKED -	12/14/2011	REVISED -	

**STATE OF ILLINOIS**  
**DEPARTMENT OF TRANSPORTATION**

**33" x 48" PPC DECK BEAM DETAILS**  
**STRUCTURE NO. 096-3456**

F.A.S. ROUTE	SECTION	COUNTY	TOTAL SHEETS	SHEET NO.
2821	07-00117-00-BR	WAYNE	11	7
RAAI JOB NO. 52111			ILLINOIS FED. AID PROJECT	
			CONTRACT NO. 95671	