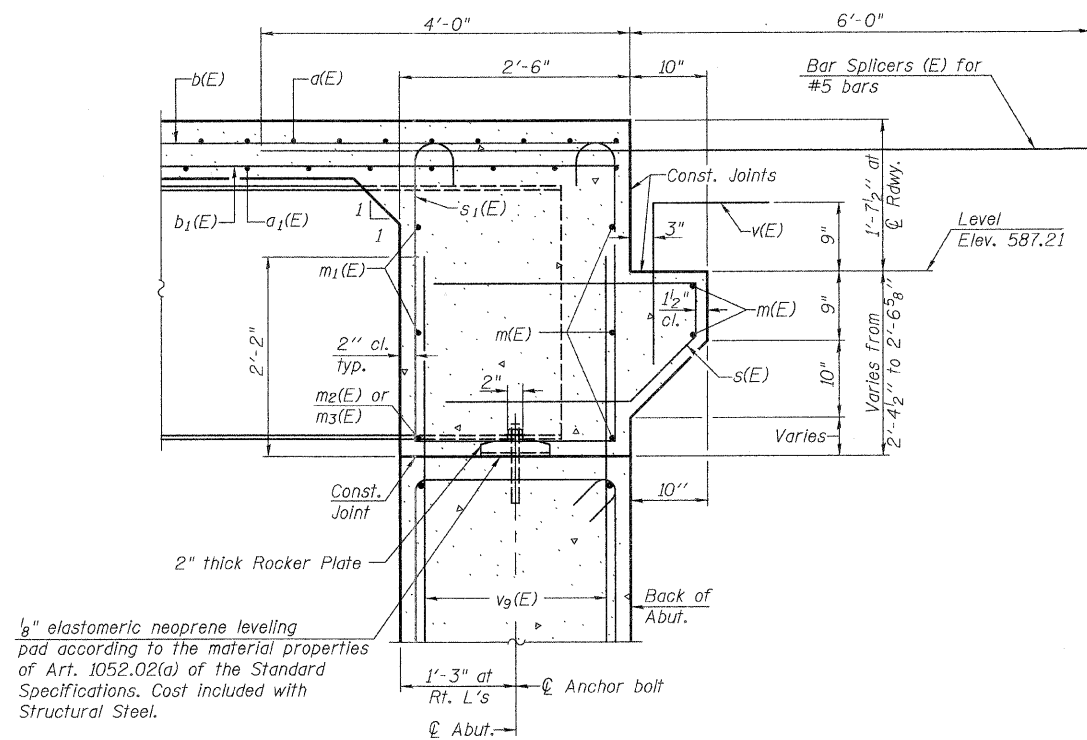


**DIAPHRAGM ELEVATION AT EAST ABUTMENT**  
(Looking East)

Notes:  
 Reinforcement bars in diaphragm are billed with superstructure on sheet 8 of 23.  
 Concrete in diaphragm is included with Concrete Superstructure on sheet 8 of 23.  
 See Sheet 8 of 23 for details of s(E) & s1(E) bars.  
 See Sheet 21 of 23 for placement of v9(E) bars.

**MIN. BAR LAP**  
 #6 bar = 3'-4"



**SECTION B-B**

**DIAPHRAGM DETAILS**  
**RIVER RD. (F.A.U. 3799) OVER**  
**BLACKBERRY CREEK**  
**SECTION 08-00036-00-BR**  
**KENDALL COUNTY**  
**STATION 99+98.81**

DESIGNED	NPH
CHECKED	BAN
DRAWN	RMD
CHECKED	BAN

SHEET NO. 9	ROUTE NO.	SECTION	COUNTY	TOTAL SHEETS	SHEET NO.
	FAU 3799	08-00036-00-BR	KENDALL	54	30
23 SHEETS	SN 047-6500		CONTRACT NO. 87509		
	FED. ROAD DIST. NO. 7	ILLINOIS	FED. AID PROJECT BRM-9003(683)		