

EDGE OF NORTH PARAPET

Location	Station	Offset	Theoretical Grade Elevations
End W. Approach Pvmf.	99+19.38	-14.97	587.95
A	99+29.42	-15.02	588.00
B	99+39.46	-15.04	588.05
Bk W. Abutment	99+48.99	-15.03	588.09

NORTH EDGE OF ROADWAY PAVEMENT

Location	Station	Offset	Theoretical Grade Elevations
End W. Approach Pvmf.	99+19.44	-12.00	588.01
A	99+29.47	-12.00	588.06
B	99+39.50	-12.00	588.11
Bk W. Abutment	99+49.03	-12.00	588.16

Ø ROADWAY & PROFILE GRADE

Location	Station	Offset	Theoretical Grade Elevations
End W. Approach Pvmf.	99+19.68	0.00	588.20
A	99+29.68	0.00	588.25
B	99+39.68	0.00	588.30
Bk W. Abutment	99+49.18	0.00	588.34

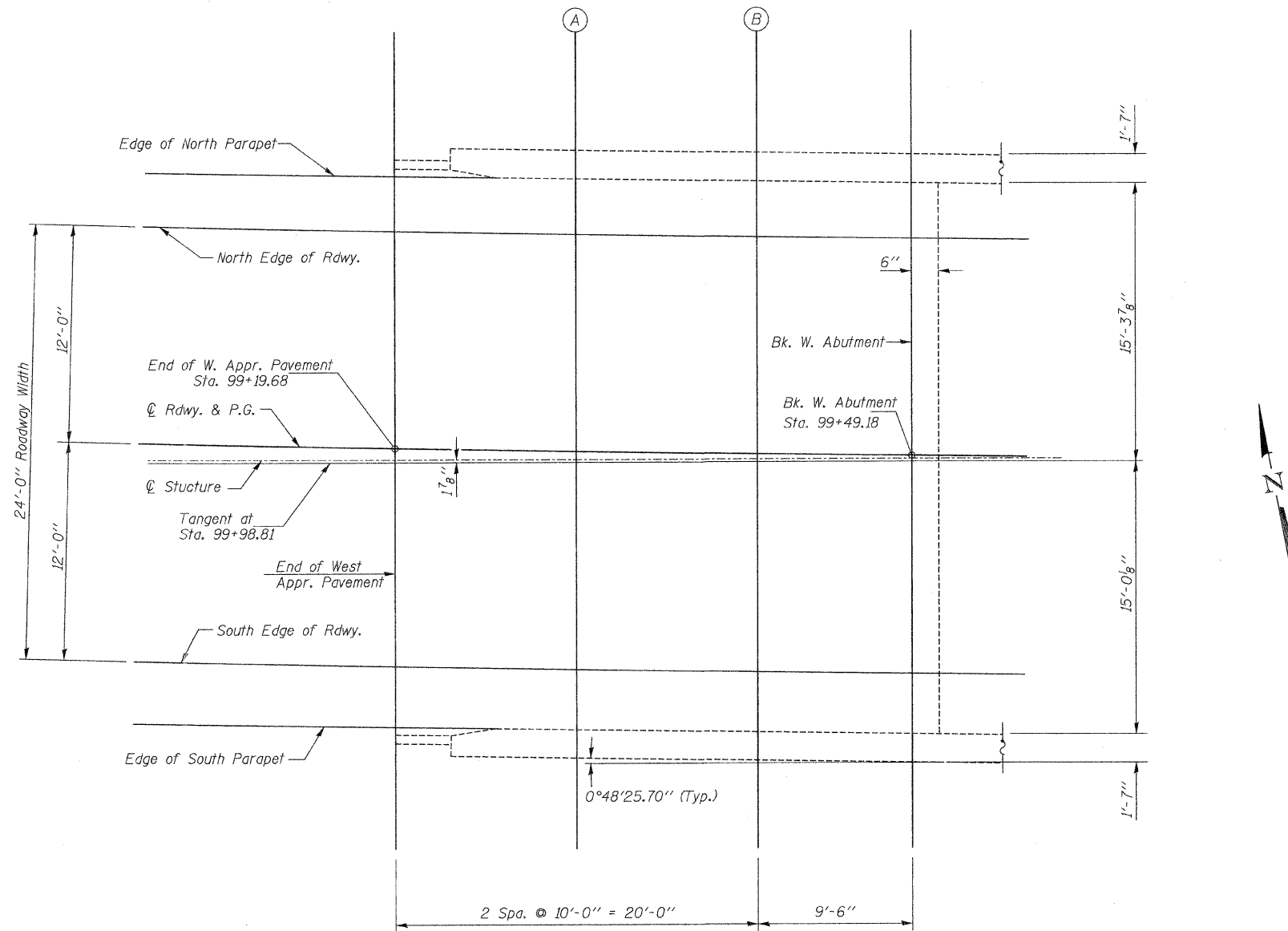
SOUTH EDGE OF ROADWAY PAVEMENT

Location	Station	Offset	Theoretical Grade Elevations
End W. Approach Pvmf.	99+19.92	12.00	588.01
A	99+29.89	12.00	588.06
B	99+39.86	12.00	588.11
Bk W. Abutment	99+49.33	12.00	588.16

EDGE OF SOUTH PARAPET

Location	Station	Offset	Theoretical Grade Elevations
End W. Approach Pvmf.	99+19.99	15.36	587.94
A	99+29.94	15.31	587.99
B	99+39.91	15.29	588.04
Bk W. Abutment	99+49.37	15.30	588.09

DESIGNED	NPH
CHECKED	BAN
DRAWN	RMD
CHECKED	BAN



PLAN WEST APPROACH PAVEMENT

**TOP OF WEST APPROACH PAVEMENT ELEVATIONS
RIVER RD. (F.A.U. 3799) OVER
BLACKBERRY CREEK
SECTION 08-00036-00-BR
KENDALL COUNTY
STATION 99+98.81**

SHEET NO. 5 23 SHEETS	ROUTE NO.	SECTION	COUNTY	TOTAL SHEETS	SHEET NO.
	FAU 3799	08-00036-00-BR	KENDALL	54	26
SN 047-6500			CONTRACT NO. 87509		
FED. ROAD DIST. NO. 7		ILLINOIS	FED. AID PROJECT BRM-9003(883)		