

STATE OF ILLINOIS  
DEPARTMENT OF TRANSPORTATION

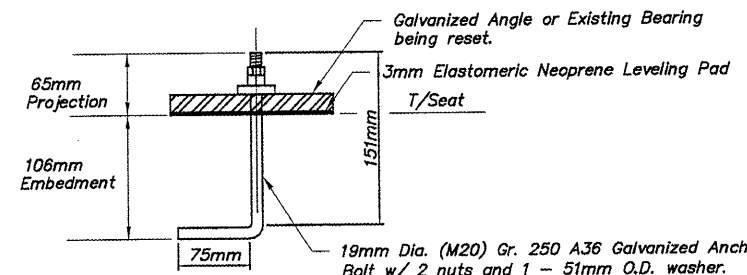
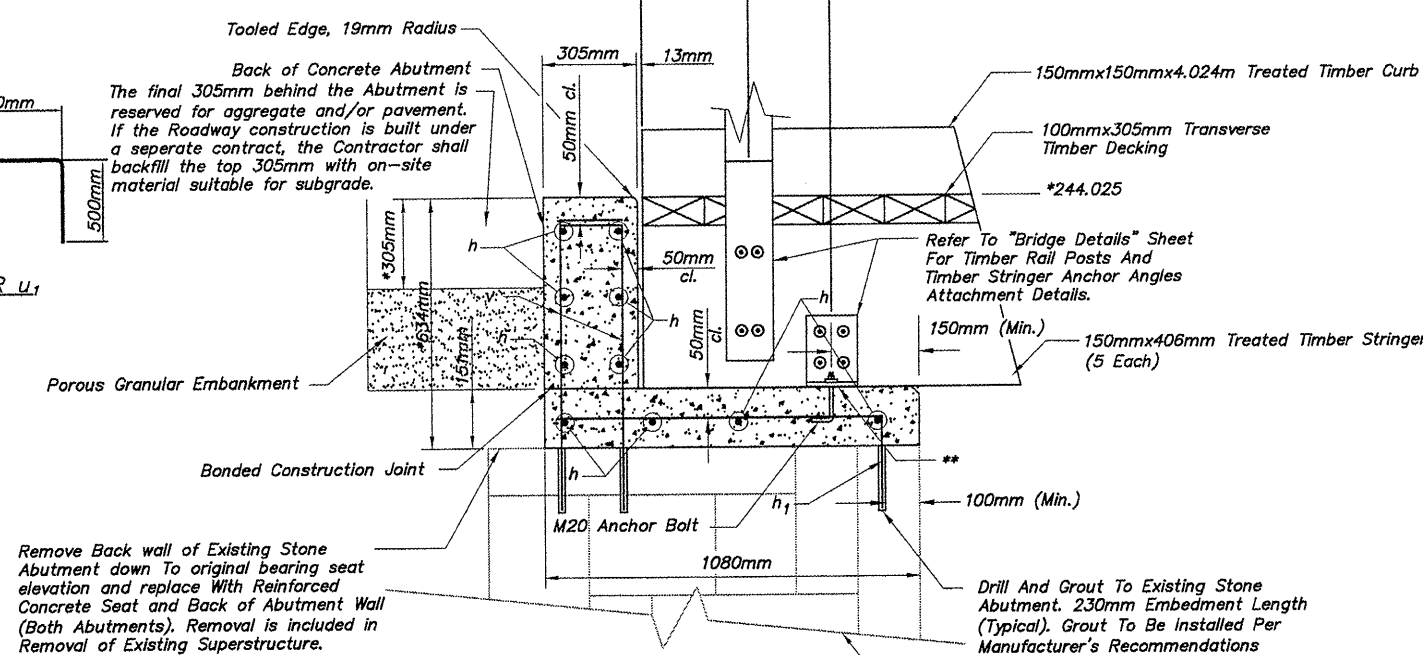
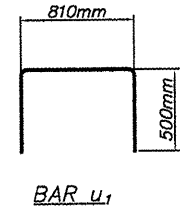
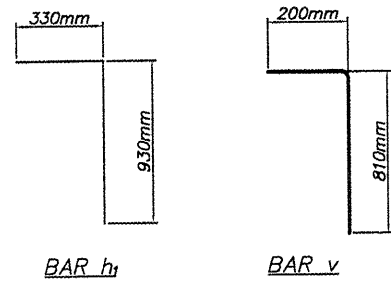
**BILL OF MATERIAL**

For Both Abutments and Wing Wall Repair

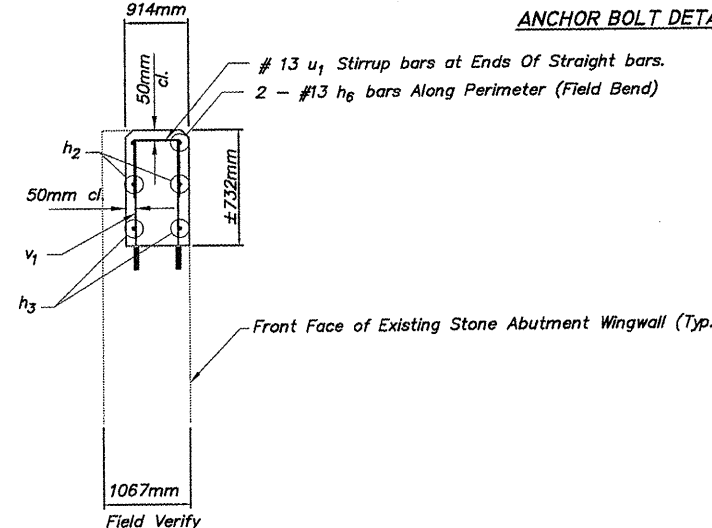
Bar	No.	Size	Length	Shape
h	20	#16	5.230m	—
h <sub>1</sub>	36	#13	1.260m	—
h <sub>2</sub>	2	#16	2.200m	—
h <sub>3</sub>	2	#16	2.500m	—
h <sub>4</sub>	2	#16	1.000m	—
h <sub>5</sub>	2	#16	0.400m	—
h <sub>6</sub>	2	#13	3.600m	—
v	72	#13	1.010m	—
***v <sub>1</sub>	14	#13	1.000m	—
***v <sub>2</sub>	4	#13	1.400m	—
u <sub>1</sub>	12	#13	1.810m	—

Treated Timber Size	No.	Cu. M.
150mmX406mmX3.810m	7	1.624
100mmX305mmX3.70m	12	1.467
150mmX150mmX3.810m	2	0.171
50mmX150mmX4.572m	8	0.274
25mmX200mmX4.572m	2	0.046
150mmX150mmX0.406m	6	0.055
150mmX150mmX1.843m	6	0.249
Concrete Structures	Cu. M.	5.42
Reinforcement Bars	Kg	347
Drill and Grout Bars	Each	108
Anchor Bolts M20	Each	14

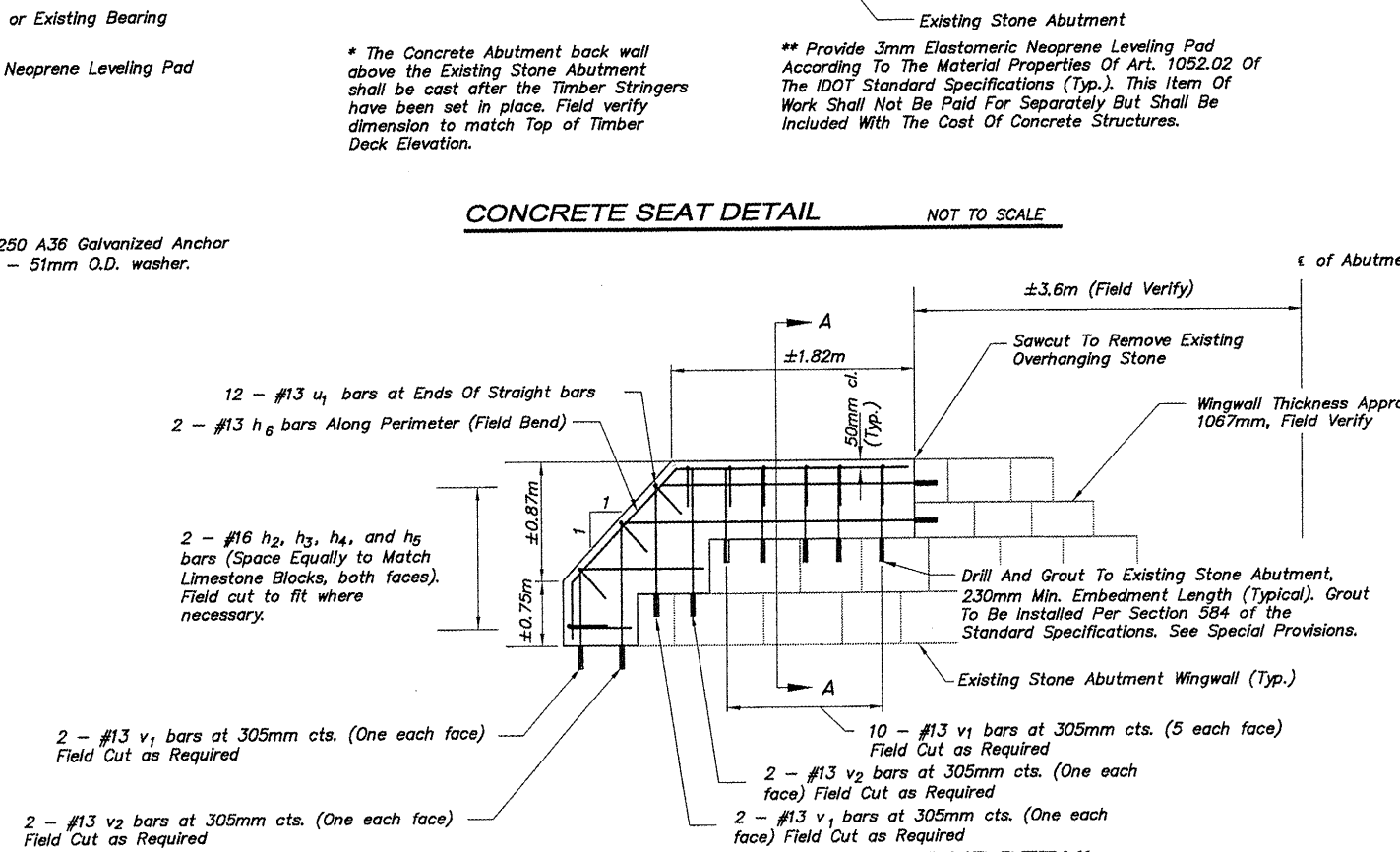
\*\*\* Field cut length as required



**ANCHOR BOLT DETAIL**



**SECTION A-A** NOT TO SCALE



**ABUTMENT WINGWALL REPAIR DETAIL** NOT TO SCALE

**BRIDGE DETAILS**  
**BRIDGE 130**  
**OVER A MINOR DITCH**  
**TRIBUTARY TO THE S KENT CREEK**  
**WINNEBAGO COUNTY**  
**SECTION NO. 94-00267-00-BT**  
**STATION 46+724.37**

SHEET 3 OF 3

SHEET REVIEW		REVISIONS		SCALE: N/A	<p>7282 Argus Drive Rookford, Illinois 61073-6837 (815) 398-2332 Design Firm License: Illinois 184-000816 Copyright 2011 By McClure Engineering Associates, Inc.</p>	BRIDGE NO. 130 DETAILS 2		SHEET NO.
AGENCY	DATE	NO.	ITEM	DATE		DRAWN BY: REK CHECKED BY: JWH DATE: DECEMBER 12, 2011	PECATONICA PRAIRIE PATH WINNEBAGO COUNTY HIGHWAY DEPARTMENT SECTION 94-00267-00-BT FILE: H:\10-042 WINN CO PEC PATH\DESIGN\DRAWINGS\BRIDGES\10-042 B129-130.DWG JOB: 04-30-10-042	