

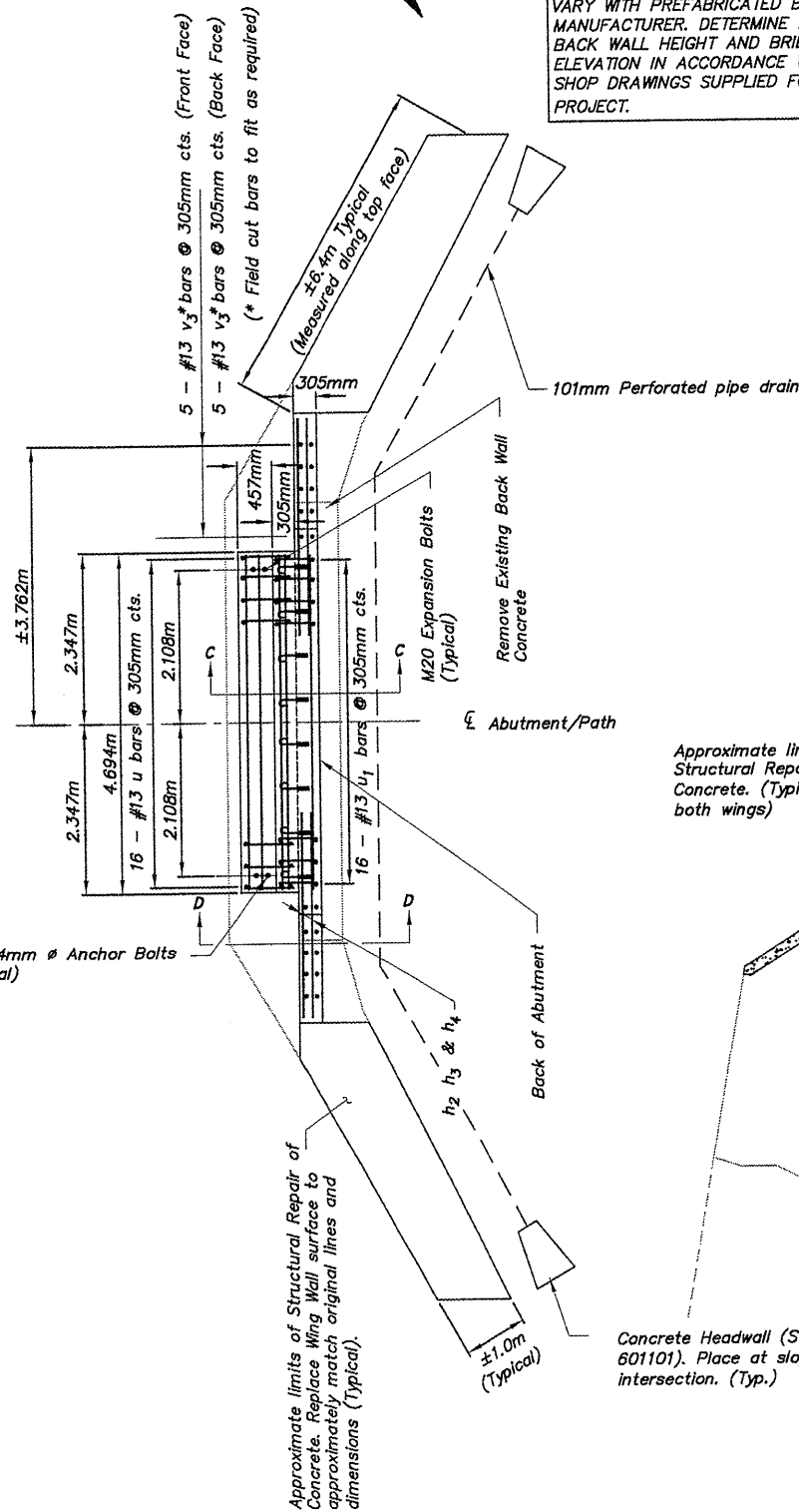
STATE OF ILLINOIS
DEPARTMENT OF TRANSPORTATION

Tooled Edge, 19mm Radius

25.4mm ϕ Grade 250 (A36) Galvanized
Anchor Bolt w/ 2 nuts and 1 washer.

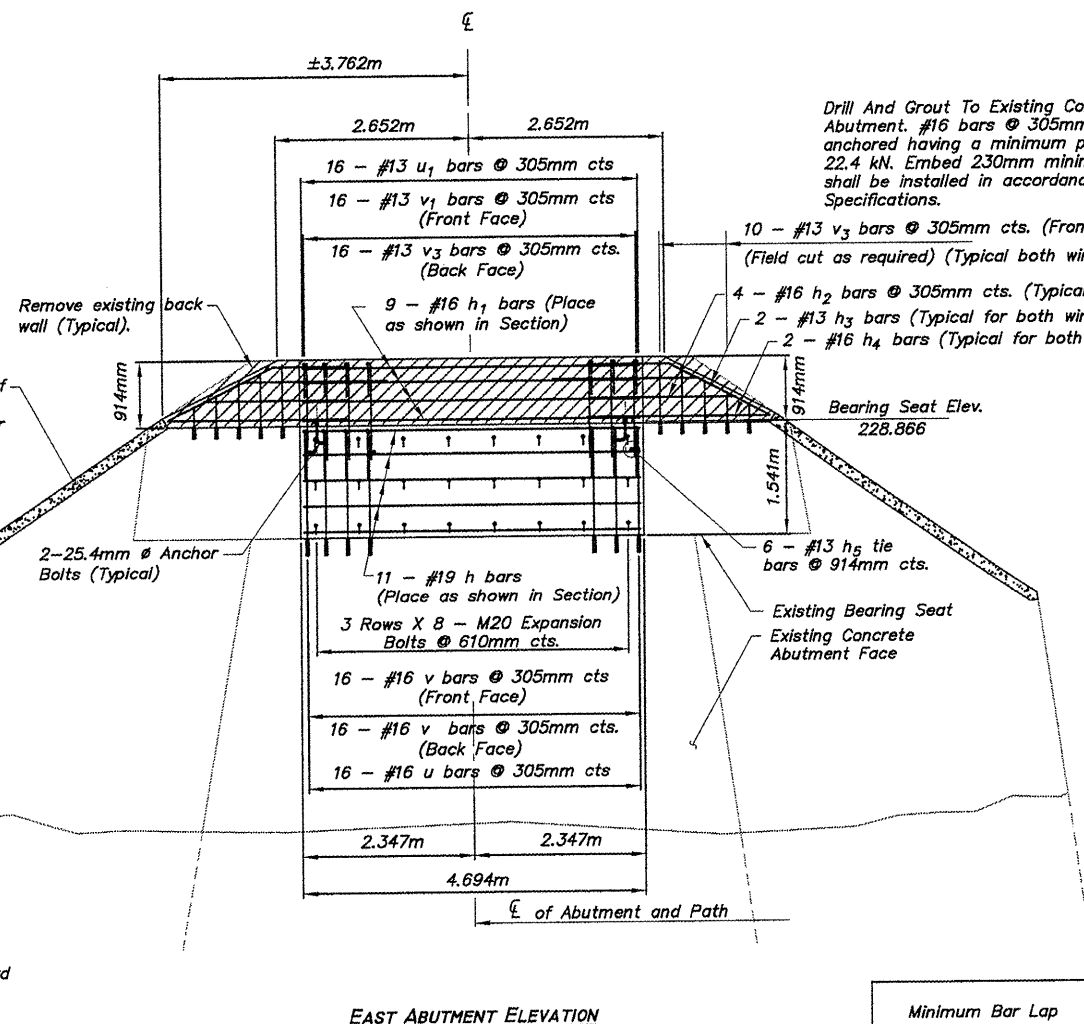
CAUTION
OVERHEAD
WIRES

DIMENSIONS AND ELEVATIONS MAY
VARY WITH PREFABRICATED BRIDGE
MANUFACTURER. DETERMINE ACTUAL
BACK WALL HEIGHT AND BRIDGE SEAT
ELEVATION IN ACCORDANCE WITH
SHOP DRAWINGS SUPPLIED FOR THIS
PROJECT.



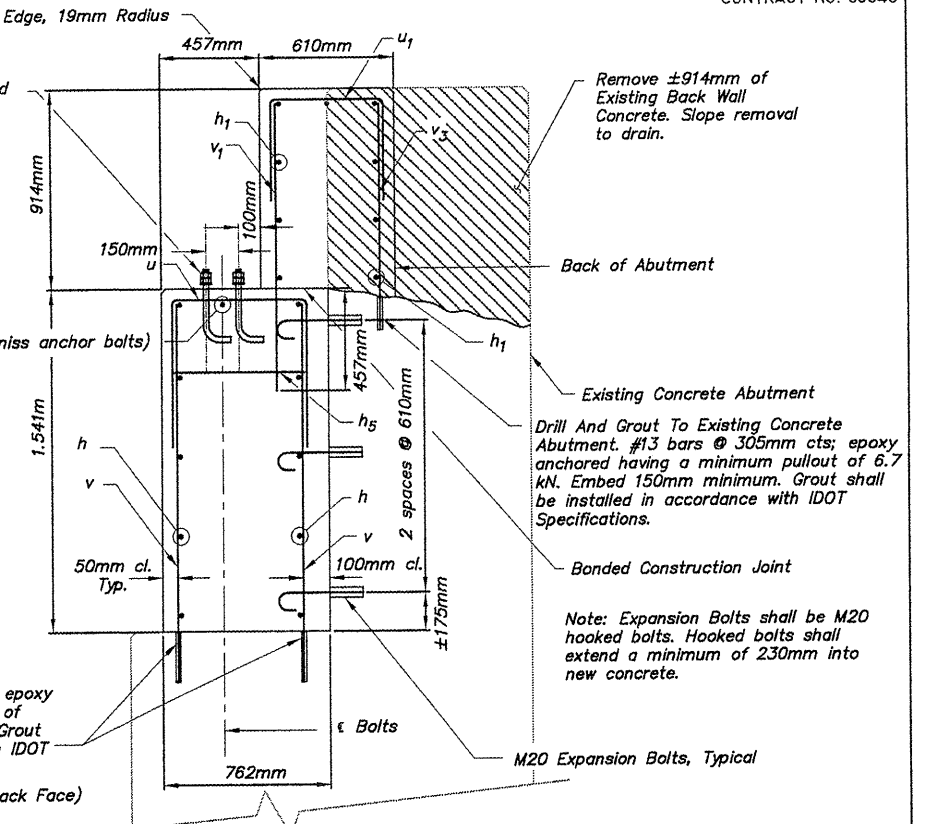
EAST ABUTMENT PLAN

NOT TO SCALE

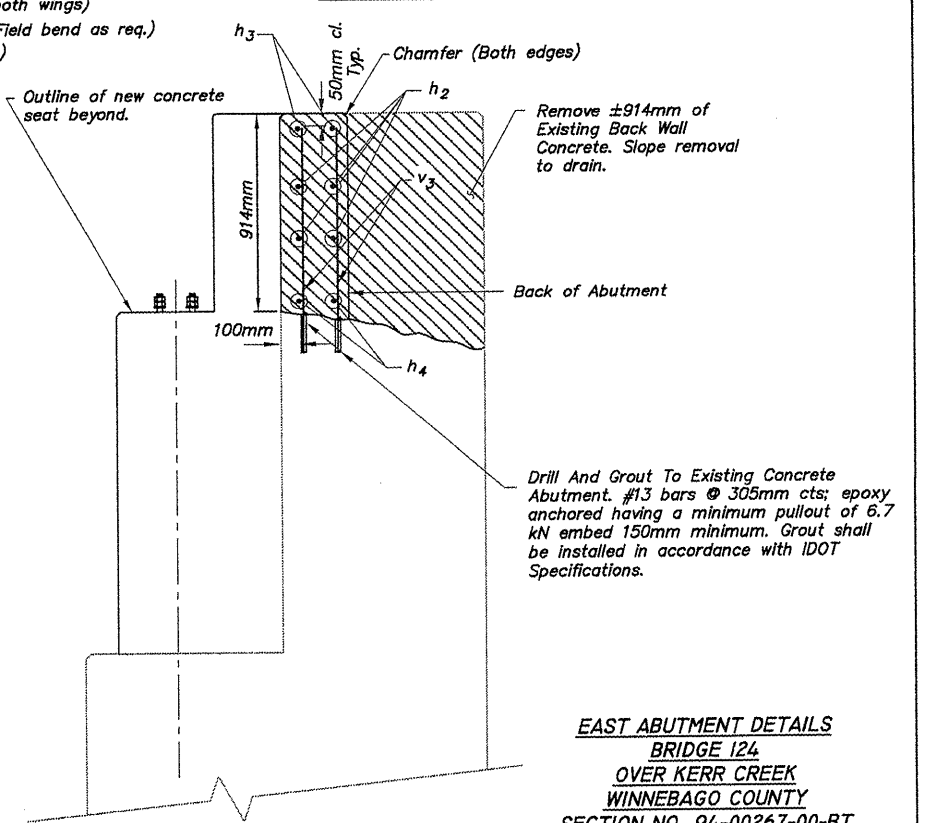


EAST ABUTMENT ELEVATION

Minimum Bar Lap	
#13	530mm
#16	660mm
#19	790mm



SECTION C-C



SECTION D-D

EAST ABUTMENT SECTIONS

EAST ABUTMENT DETAILS
BRIDGE 124
OVER KERR CREEK
WINNEBAGO COUNTY
SECTION NO. 94-00267-00-BT
STATION 31+599.70

SHEET 3 OF 4

SHEET REVIEW	
AGENCY	DATE

REVISIONS		
NO.	ITEM	DATE

SCALE:	N/A
DRAWN BY:	REK
CHECKED BY:	JWH
DATE:	DECEMBER 12, 2011

McClure
Engineering Associates, Inc.
7882 Angus Drive, Rockford, Illinois 61107-5837
(616) 985-2332, (616) 985-2498, FAX (616) 396-2498
Design Firm License: Illinois 184-000816
Copyright 2011 By McClure Engineering Associates, Inc.

BRIDGE NO. 124 DETAILS 2
PECATONICA PRAIRIE PATH
WINNEBAGO COUNTY HIGHWAY DEPARTMENT
SECTION 94-00267-00-BT
FILE:H:\10-042 WINN CO PEC PATH\DESIGN\DRAWINGS\BRIDGES\10-042 B124.DWG
JOB:04-30-10-042

SHEET NO.	94
OF	107