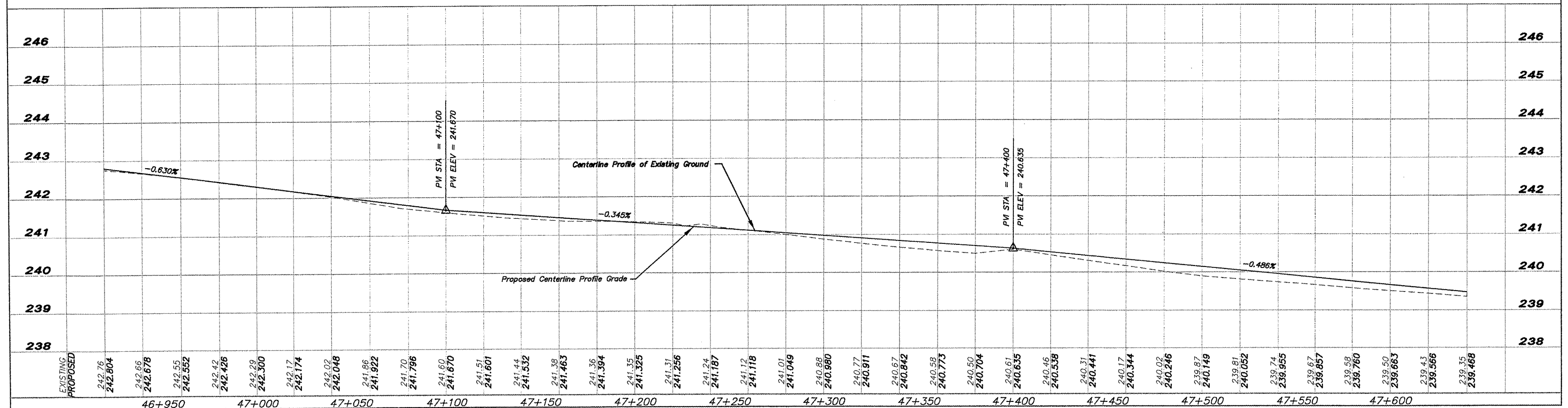
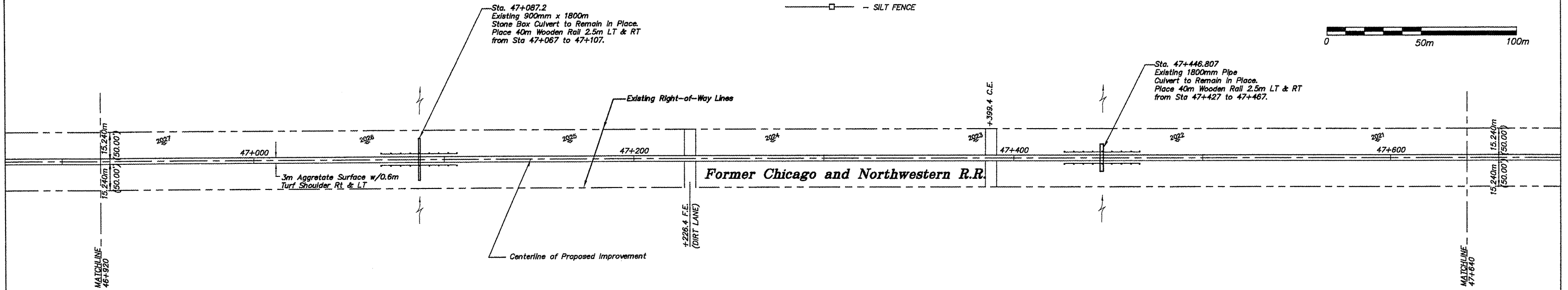
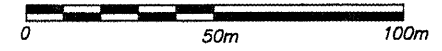


EROSION CONTROL

- - INLET PROTECTION
- ⌋ - CULVERT PIPE PROTECTION
- ⌋ - DITCH CHECK
- - SILT FENCE



EXISTING	PROPOSED
242.76	242.804
242.66	242.678
242.55	242.552
242.42	242.428
242.29	242.300
242.17	242.174
242.02	242.048
241.86	241.86
241.796	241.922
241.60	241.70
241.51	241.532
241.44	241.38
241.35	241.256
241.24	241.187
241.12	241.118
241.01	241.049
240.88	240.980
240.77	240.911
240.67	240.842
240.59	240.773
240.50	240.704
240.46	240.635
240.31	240.538
240.17	240.441
240.02	240.344
239.87	240.246
239.81	239.87
239.74	240.149
239.55	239.81
239.50	240.052
239.43	239.74
239.35	239.955
239.35	239.67
239.35	239.857
239.35	239.58
239.35	239.780
239.35	239.50
239.35	239.663
239.35	239.43
239.35	239.566
239.35	239.35
239.35	239.468

SHEET REVIEW	
AGENCY	DATE

REVISIONS		
NO.	ITEM	DATE

SCALE: Hor. = 1:1000 Ver. = 1:50  
 DRAWN BY: REK  
 CHECKED BY: JWH  
 DATE: DECEMBER 12, 2011

**McClure**  
 Engineering Associates, Inc.  
 7282 Argus Drive, Rockford, Illinois 61107-6837  
 (616) 388-2332, FAX (616) 398-2498  
 Design Firm License: Illinois 184-000816  
 Copyright 2011 By McClure Engineering Associates, Inc.

**PLAN & PROFILE 46+920 TO 47+640**  
 PECATONICA PRAIRIE PATH  
 WINNEBAGO COUNTY HIGHWAY DEPARTMENT SECTION 96-00267-00-BT  
 FILE: H:\10-042 WINN CO PEC PATH\DESIGN\DRAWINGS\10-042 PP46+920 TO 47+640.DWG JOB: 04-30-10-042

SHEET NO.  
**50**  
 OF  
**107**