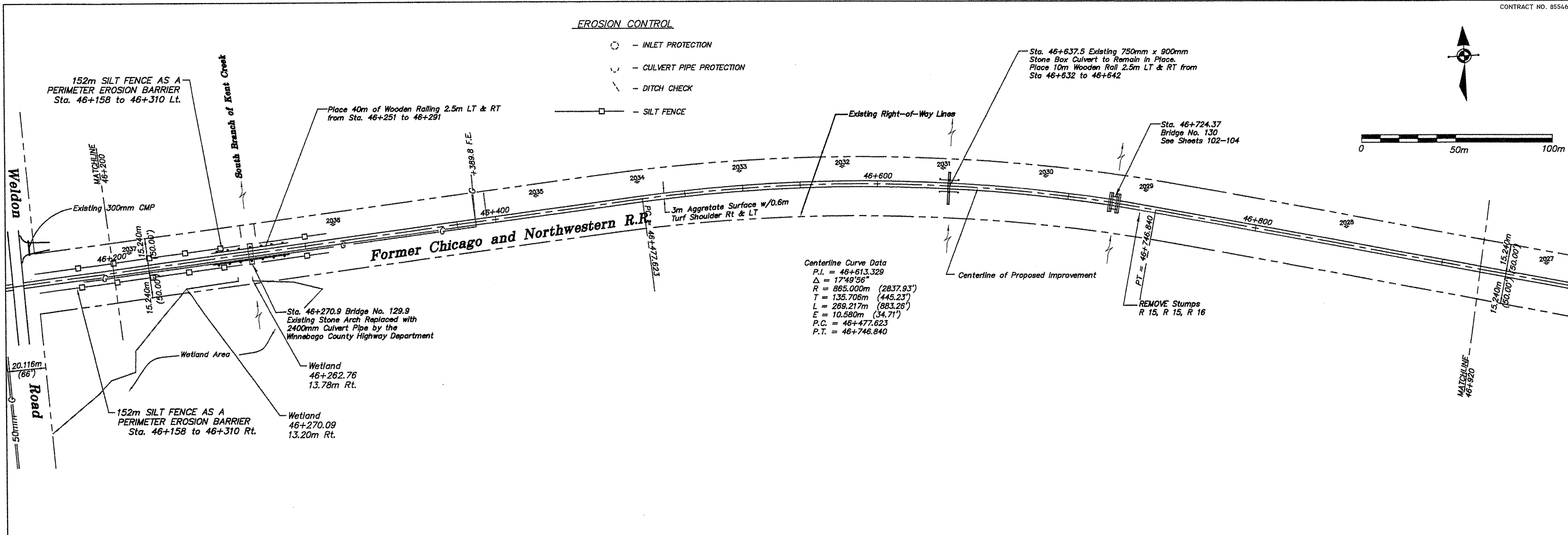
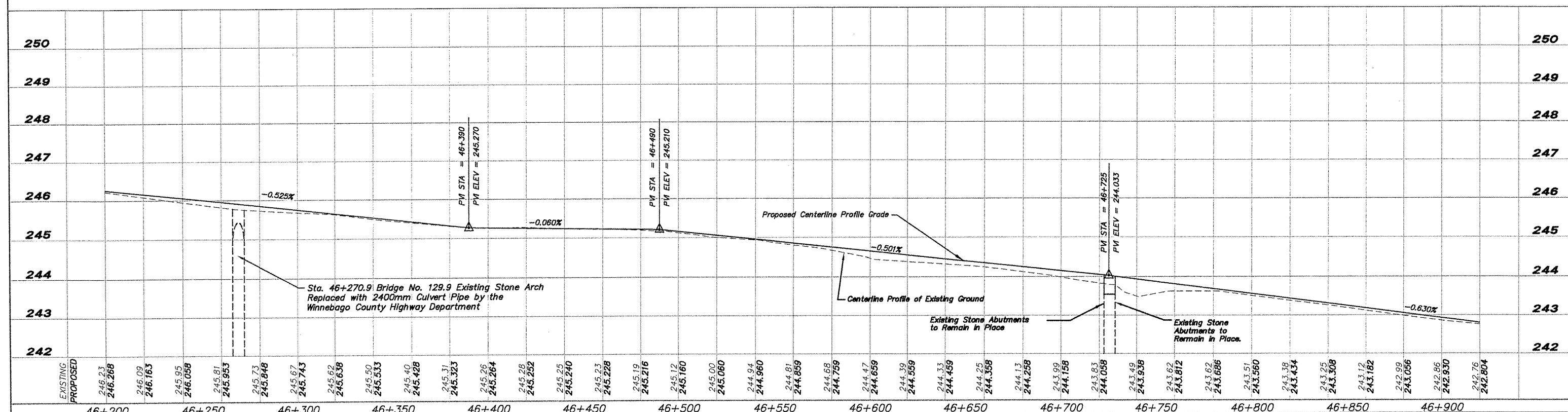


EROSION CONTROL

- - INLET PROTECTION
- CULVERT PIPE PROTECTION
- - - DITCH CHECK
- - SILT FENCE



Centerline Curve Data
 P.I. = 46+613.329
 $\Delta = 17^{\circ}49'56''$
 R = 865.000m (2837.93')
 T = 135.706m (445.23')
 L = 269.217m (883.26')
 E = 10.580m (34.71')
 P.C. = 46+477.623
 P.T. = 46+746.840



EXISTING	PROPOSED	STATION	ELEVATION	STATION	ELEVATION	STATION	ELEVATION
	246.23	46+200	246.23	46+250	245.95	46+300	245.67
	246.268	46+200	246.268	46+250	246.058	46+300	245.743
	246.09	46+250	246.09	46+250	245.81	46+300	245.73
	246.163	46+250	246.163	46+250	245.953	46+300	245.848
	245.95	46+250	245.95	46+250	245.81	46+300	245.73
	246.058	46+250	246.058	46+250	245.953	46+300	245.848
	245.81	46+300	245.81	46+300	245.73	46+300	245.67
	245.953	46+300	245.953	46+300	245.848	46+300	245.743
	245.73	46+300	245.73	46+300	245.67	46+300	245.62
	245.848	46+300	245.848	46+300	245.743	46+300	245.638
	245.67	46+300	245.67	46+300	245.62	46+300	245.50
	245.743	46+300	245.743	46+300	245.638	46+300	245.533
	245.62	46+300	245.62	46+300	245.50	46+300	245.40
	245.638	46+300	245.638	46+300	245.533	46+300	245.428
	245.50	46+300	245.50	46+300	245.40	46+300	245.31
	245.533	46+300	245.533	46+300	245.428	46+300	245.323
	245.40	46+300	245.40	46+300	245.31	46+300	245.26
	245.428	46+300	245.428	46+300	245.323	46+300	245.264
	245.31	46+300	245.31	46+300	245.26	46+300	245.28
	245.323	46+300	245.323	46+300	245.264	46+300	245.252
	245.26	46+300	245.26	46+300	245.28	46+300	245.25
	245.28	46+300	245.28	46+300	245.252	46+300	245.240
	245.252	46+300	245.252	46+300	245.25	46+300	245.23
	245.25	46+300	245.25	46+300	245.240	46+300	245.228
	245.240	46+300	245.240	46+300	245.23	46+300	245.19
	245.23	46+300	245.23	46+300	245.228	46+300	245.216
	245.228	46+300	245.228	46+300	245.19	46+300	245.12
	245.19	46+300	245.19	46+300	245.216	46+300	245.160
	245.216	46+300	245.216	46+300	245.12	46+300	245.060
	245.12	46+300	245.12	46+300	245.160	46+300	244.94
	245.160	46+300	245.160	46+300	245.060	46+300	244.960
	245.060	46+300	245.060	46+300	244.94	46+300	244.81
	244.94	46+300	244.94	46+300	244.960	46+300	244.859
	244.960	46+300	244.960	46+300	244.81	46+300	244.68
	244.81	46+300	244.81	46+300	244.859	46+300	244.769
	244.859	46+300	244.859	46+300	244.68	46+300	244.47
	244.68	46+300	244.68	46+300	244.769	46+300	244.659
	244.769	46+300	244.769	46+300	244.47	46+300	244.59
	244.47	46+300	244.47	46+300	244.659	46+300	244.559
	244.659	46+300	244.659	46+300	244.59	46+300	244.33
	244.59	46+300	244.59	46+300	244.559	46+300	244.459
	244.559	46+300	244.559	46+300	244.33	46+300	244.25
	244.33	46+300	244.33	46+300	244.459	46+300	244.358
	244.459	46+300	244.459	46+300	244.25	46+300	244.13
	244.25	46+300	244.25	46+300	244.358	46+300	244.258
	244.358	46+300	244.358	46+300	244.13	46+300	243.99
	244.13	46+300	244.13	46+300	244.258	46+300	244.158
	244.258	46+300	244.258	46+300	243.99	46+300	243.81
	243.99	46+300	243.99	46+300	244.158	46+300	243.62
	244.158	46+300	244.158	46+300	243.81	46+300	243.62
	243.81	46+300	243.81	46+300	243.62	46+300	243.508
	243.62	46+300	243.62	46+300	243.508	46+300	243.38
	243.508	46+300	243.508	46+300	243.38	46+300	243.434
	243.38	46+300	243.38	46+300	243.434	46+300	243.25
	243.434	46+300	243.434	46+300	243.25	46+300	243.508
	243.25	46+300	243.25	46+300	243.508	46+300	243.12
	243.508	46+300	243.508	46+300	243.12	46+300	243.162
	243.12	46+300	243.12	46+300	243.162	46+300	242.99
	243.162	46+300	243.162	46+300	242.99	46+300	243.056
	242.99	46+300	242.99	46+300	243.056	46+300	242.86
	243.056	46+300	243.056	46+300	242.86	46+300	242.930
	242.86	46+300	242.86	46+300	242.930	46+300	242.76
	242.930	46+300	242.930	46+300	242.76	46+300	242.804
	242.76	46+300	242.76	46+300	242.804	46+300	

SHEET REVIEW		REVISIONS	
AGENCY	DATE	NO.	ITEM

SCALE: Hor. = 1:1000 Ver. = 1:50
DRAWN BY: REK
CHECKED BY: JMW
DATE: DECEMBER 12, 2011

McClure
 Engineering Associates, Inc.
 7282 Argus Drive Rookford, Illinois 61073-5837
 (815) 398-2332 FAX (815) 398-2498
 Design Firm License: Illinois 184-000815
 Copyright 2011 By McClure Engineering Associates, Inc.

PLAN & PROFILE 46+200 TO 46+920
 PEACATONICA PRAIRIE PATH
 WINNEBAGO COUNTY HIGHWAY DEPARTMENT SECTION 94-00267-00-BT
 FILE:H:\10-042 WINN CO PEC PATH\DESIGN\DRAWINGS\10-042 PP46+200 TO 46+920.DWG JOB:04-30-10-042