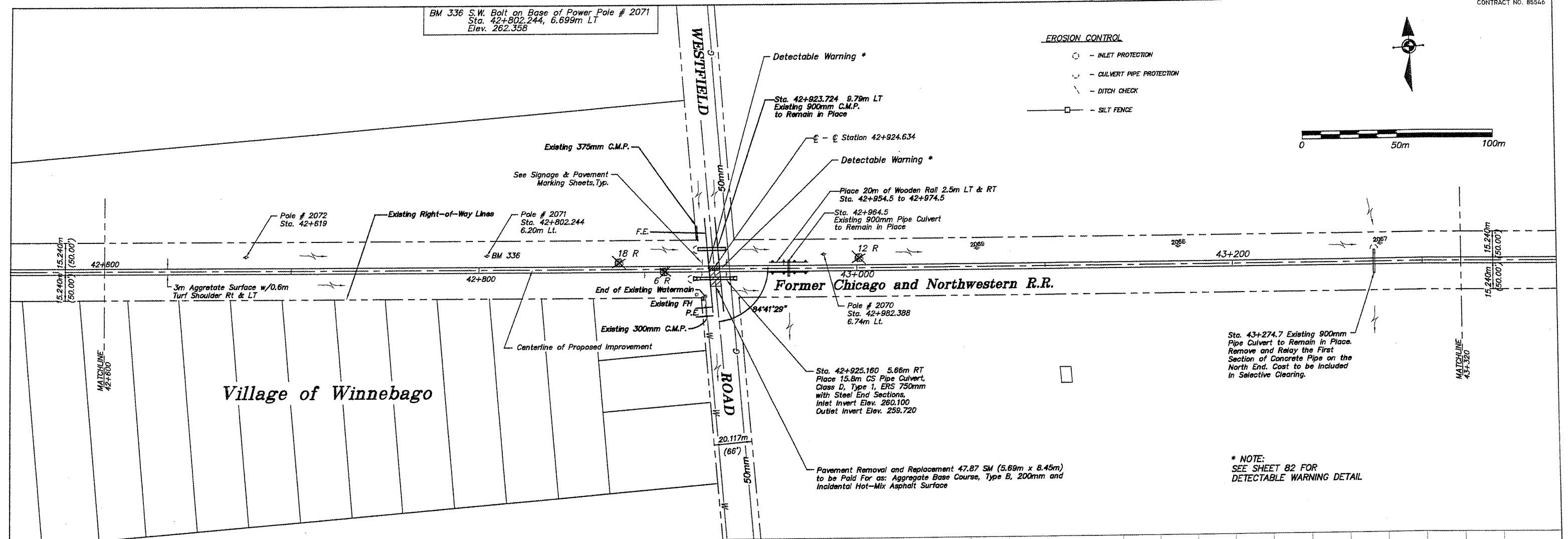
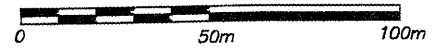
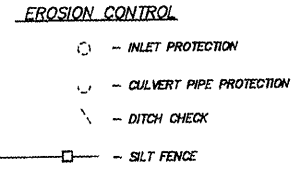
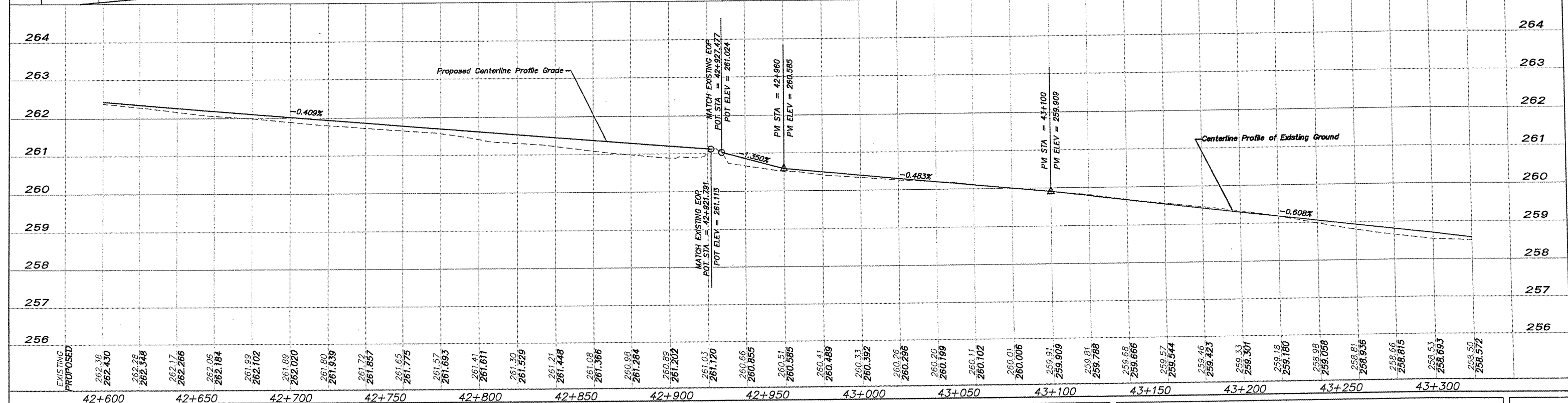


BM 336 S.W. Bolt on Base of Power Pole # 2071
Sta. 42+802.244, 6.699m LT
Elev. 262.358



Sta. 43+274.7 Existing 900mm Pipe Culvert to Remain in Place. Remove and Relay the First Section of Concrete Pipe on the North End. Cost to be included in Selective Clearing.

* NOTE:
SEE SHEET B2 FOR
DETECTABLE WARNING DETAIL



	SHEET REVIEW	REVISIONS	SCALE: Hor. = 1:1000 Ver. = 1:50	 7282 Arque Drive Rockford, Illinois 61107-8837 (815) 398-2332 FAX (815) 398-2488 Design Firm License: Illinois 164-000818 Copyright 2011 By McClure Engineering Associates, Inc.	PLAN & PROFILE 42+600 TO 43+320 PEACATONICA PRAIRIE PATH WINNEBAGO COUNTY HIGHWAY DEPARTMENT SECTION 94-00267-00-BT FILE: H:\10-042 WINN CO PEC PATH\DESIGN\DRAWINGS\10-042 PP42+600 TO 43+320.DWG JOB: 04-30-10-042	SHEET NO. 44 OF 107											
	<table border="1" style="width: 100%; border-collapse: collapse;"> <tr><th>AGENCY</th><th>DATE</th></tr> <tr><td> </td><td> </td></tr> </table>	AGENCY	DATE				<table border="1" style="width: 100%; border-collapse: collapse;"> <tr><th>NO.</th><th>ITEM</th><th>DATE</th></tr> <tr><td> </td><td> </td><td> </td></tr> </table>	NO.	ITEM	DATE				<table border="1" style="width: 100%; border-collapse: collapse;"> <tr><td>DRAWN BY: REX</td></tr> <tr><td>CHECKED BY: JMH</td></tr> <tr><td>DATE: DECEMBER 12, 2011</td></tr> </table>	DRAWN BY: REX	CHECKED BY: JMH	DATE: DECEMBER 12, 2011
AGENCY	DATE																
NO.	ITEM	DATE															
DRAWN BY: REX																	
CHECKED BY: JMH																	
DATE: DECEMBER 12, 2011																	