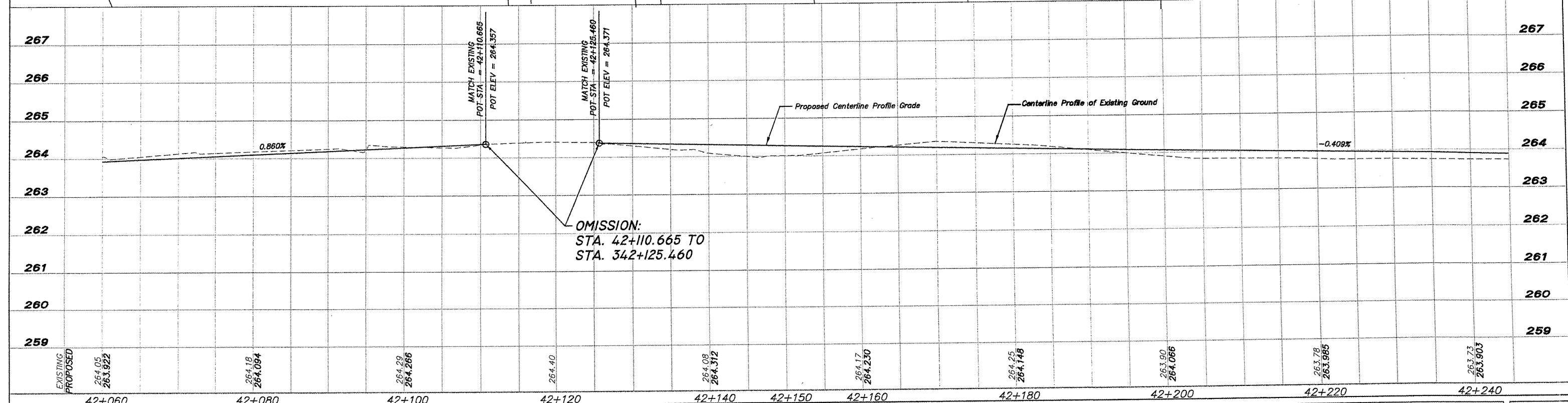
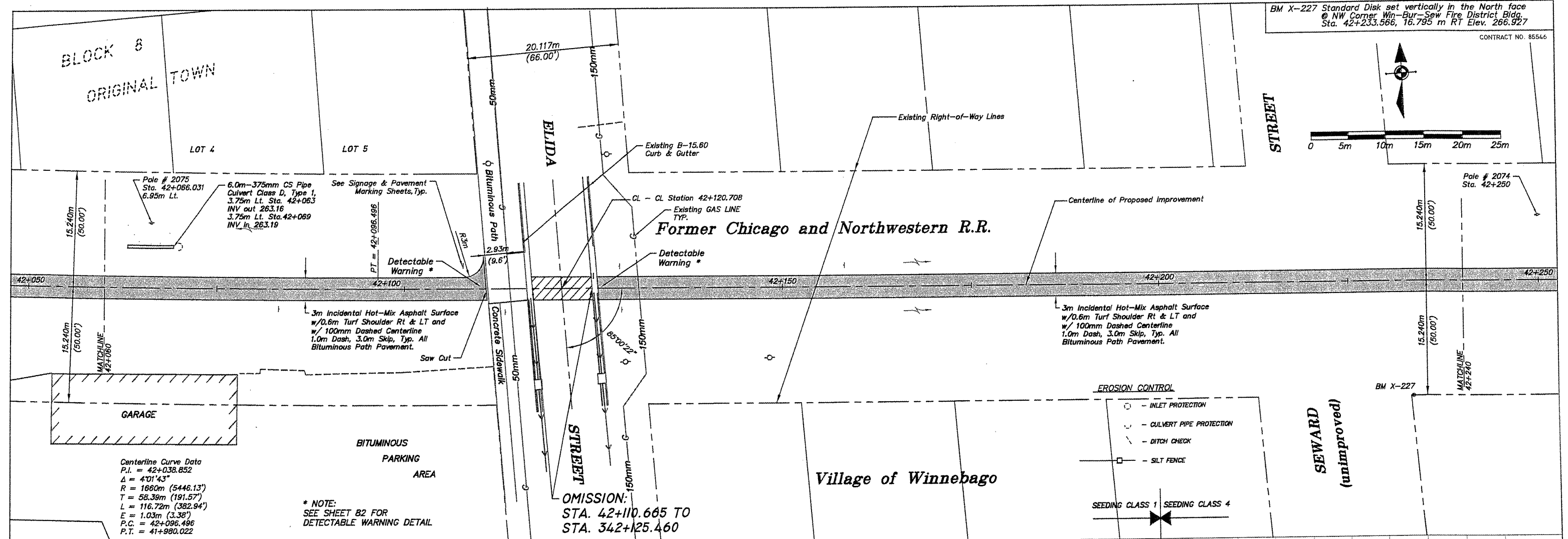
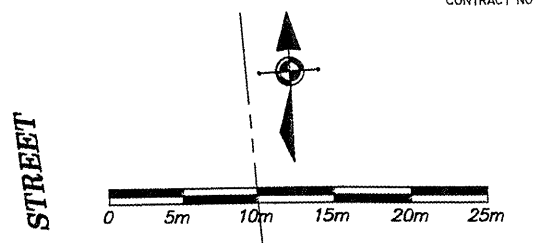


BM X-227 Standard Disk set vertically in the North face @ NW Corner Win-Bur-Sew Fire District Bldg. Sta. 42+233.566, 16.795 m RT Elev. 266.927
 CONTRACT NO. 85546



EXISTING PROPOSED	264.05 263.922	264.18 264.094	264.29 264.266	264.40	264.08 264.312	264.17 264.230	264.25 264.148	263.90 264.066	263.78 263.985	263.73 263.903	
	42+060	42+080	42+100	42+120	42+140	42+150	42+160	42+180	42+200	42+220	42+240

SHEET REVIEW	
AGENCY	DATE

REVISIONS		
NO.	ITEM	DATE

SCALE: Hor. = 1:250 Ver. = 1:50
 DRAWN BY: REK
 CHECKED BY: JWH
 DATE: DECEMBER 12, 2011

McClure
 Engineering Associates, Inc.
 7282 Argus Drive, Rockford, Illinois 61107-5837
 (615) 398-2332, (615) 398-2496
 Design Firm License: Illinois 184-000816
 Copyright 2011 By McClure Engineering Associates, Inc.

PLAN & PROFILE 42+060 TO 42+240
 PECATONICA PRAIRIE PATH
 WINNEBAGO COUNTY HIGHWAY DEPARTMENT SECTION 94-00267-00-BT
 FILE: H:\10-042 WINN CO PEC PATH\DESIGN\DRAWINGS\10-042 PP42+060 TO 42+240.DWG JOB: 04-30-10-042

SHEET NO. 41 OF 107