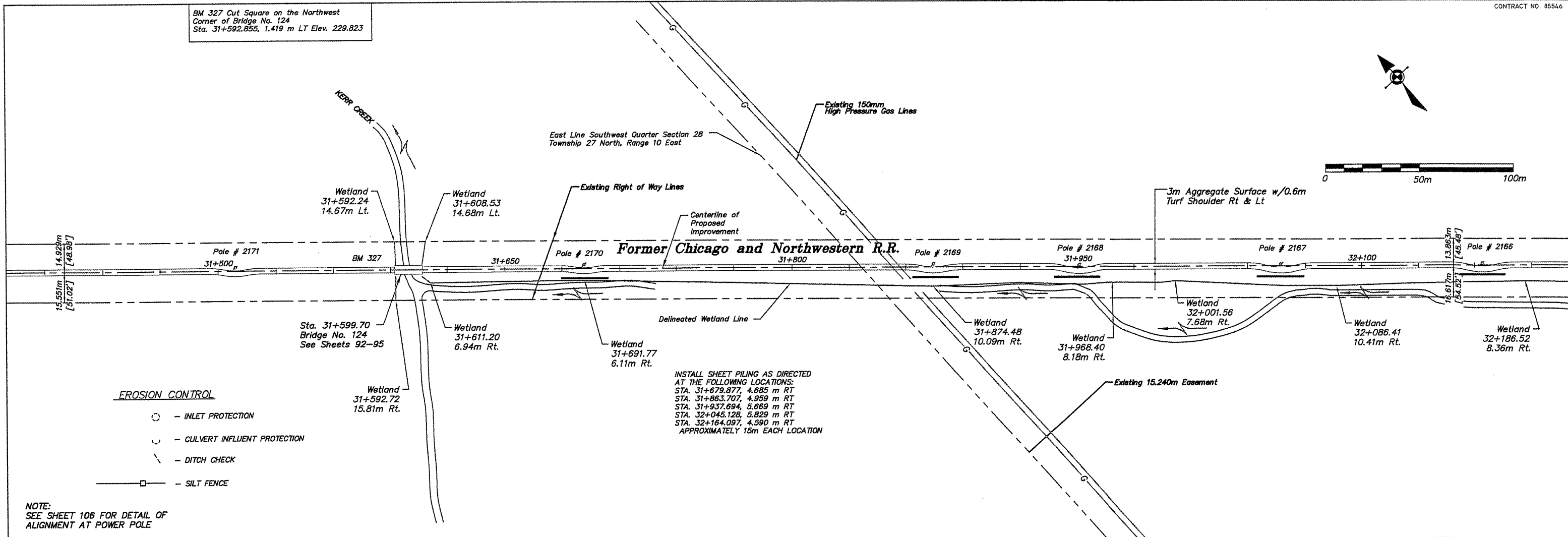


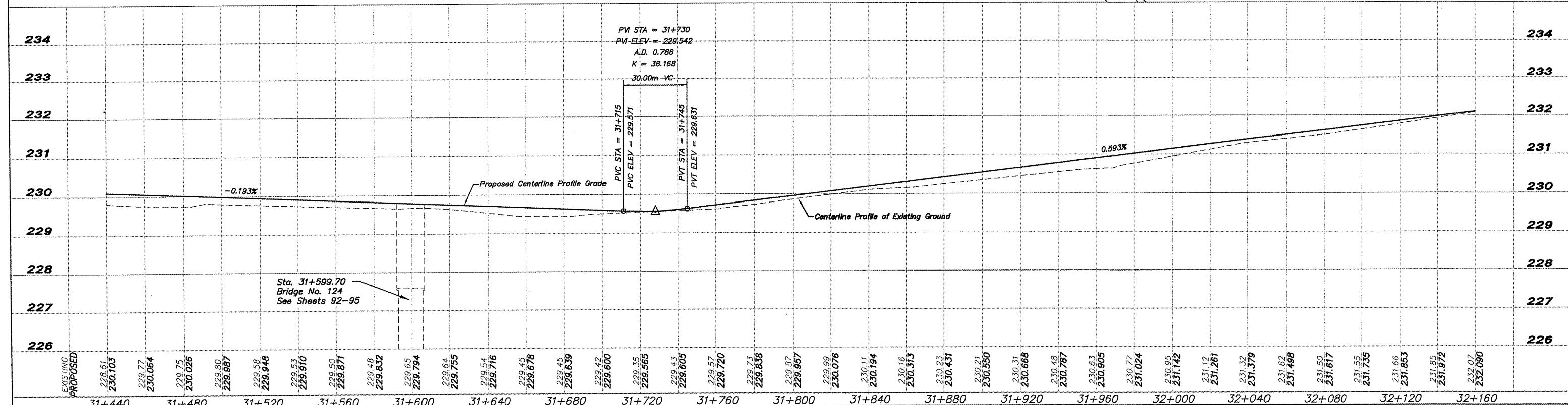
BM 327 Cut Square on the Northwest Corner of Bridge No. 124
Sta. 31+592.855, 1,419 m LT Elev. 229.823



- EROSION CONTROL**
- - INLET PROTECTION
 - ∩ - CULVERT INFLUENT PROTECTION
 - - - DITCH CHECK
 - - SILT FENCE

INSTALL SHEET PILING AS DIRECTED AT THE FOLLOWING LOCATIONS:
 STA. 31+679.877, 4.685 m RT
 STA. 31+863.707, 4.959 m RT
 STA. 31+937.694, 5.669 m RT
 STA. 32+045.128, 5.829 m RT
 STA. 32+164.097, 4.590 m RT
 APPROXIMATELY 15m EACH LOCATION

NOTE:
SEE SHEET 106 FOR DETAIL OF ALIGNMENT AT POWER POLE



	SHEET REVIEW	REVISIONS	SCALE: Hor.=1:1000 Ver.=1:50	<p>7282 Argus Drive Rockford, Illinois 61107-8837 (815) 398-2332 FAX (815) 398-2488 Design Firm License: Illinois 184-000816 Copyright 2011 By McClure Engineering Associates, Inc.</p>	<p>PLAN & PROFILE 31+440 TO 32+160</p> <p>PECATONICA PRAIRIE PATH</p> <p>WINNEBAGO COUNTY HIGHWAY DEPARTMENT SECTION 94-00267-00-BT</p> <p>FILE:H:\10-042 WINN CO PEC PATH\DESIGN\DRAWINGS\10-042 PPSH+440 TO 52+160.DWG JOB:04-30-10-042</p>	<p>SHEET NO. 24 OF 107</p>										
<table border="1" style="width: 100%; border-collapse: collapse;"> <tr> <th>AGENCY</th> <th>DATE</th> </tr> <tr> <td> </td> <td> </td> </tr> </table>	AGENCY	DATE				<table border="1" style="width: 100%; border-collapse: collapse;"> <tr> <th>NO.</th> <th>ITEM</th> <th>DATE</th> </tr> <tr> <td> </td> <td> </td> <td> </td> </tr> </table>	NO.	ITEM	DATE				<table border="1" style="width: 100%; border-collapse: collapse;"> <tr> <td>DRAWN BY: REX</td> </tr> <tr> <td>CHECKED BY: JMM</td> </tr> <tr> <td>DATE: DECEMBER 12, 2011</td> </tr> </table>	DRAWN BY: REX	CHECKED BY: JMM	DATE: DECEMBER 12, 2011
AGENCY	DATE															
NO.	ITEM	DATE														
DRAWN BY: REX																
CHECKED BY: JMM																
DATE: DECEMBER 12, 2011																