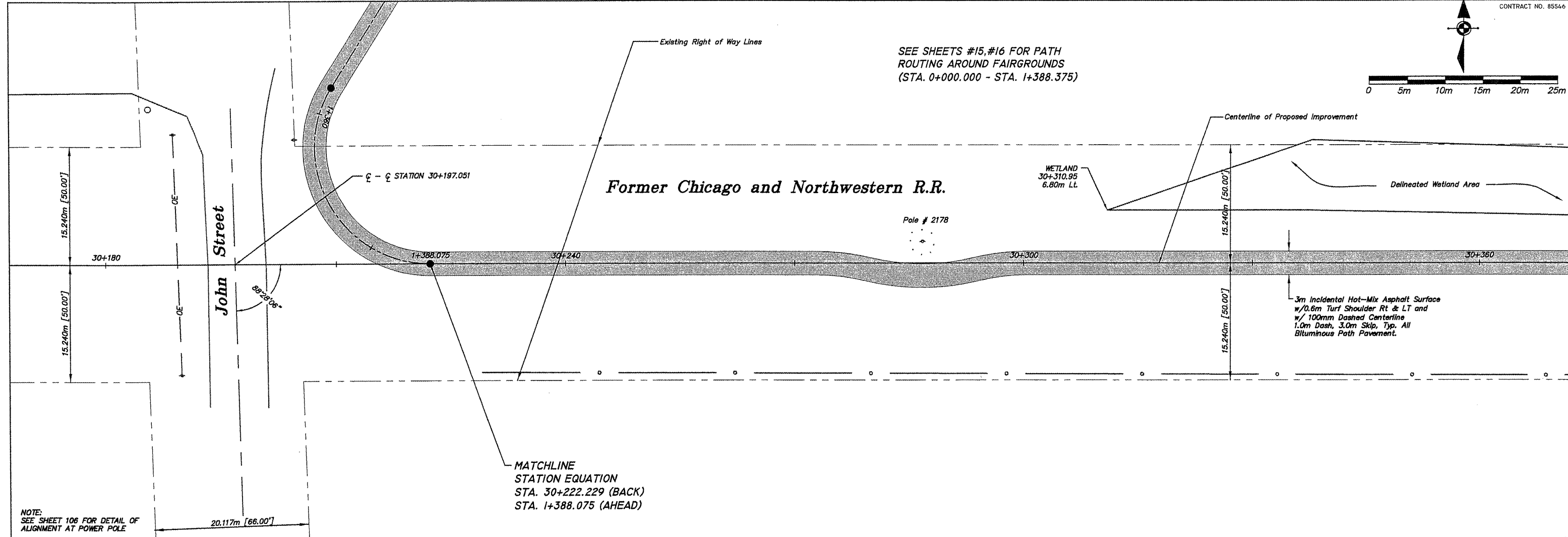


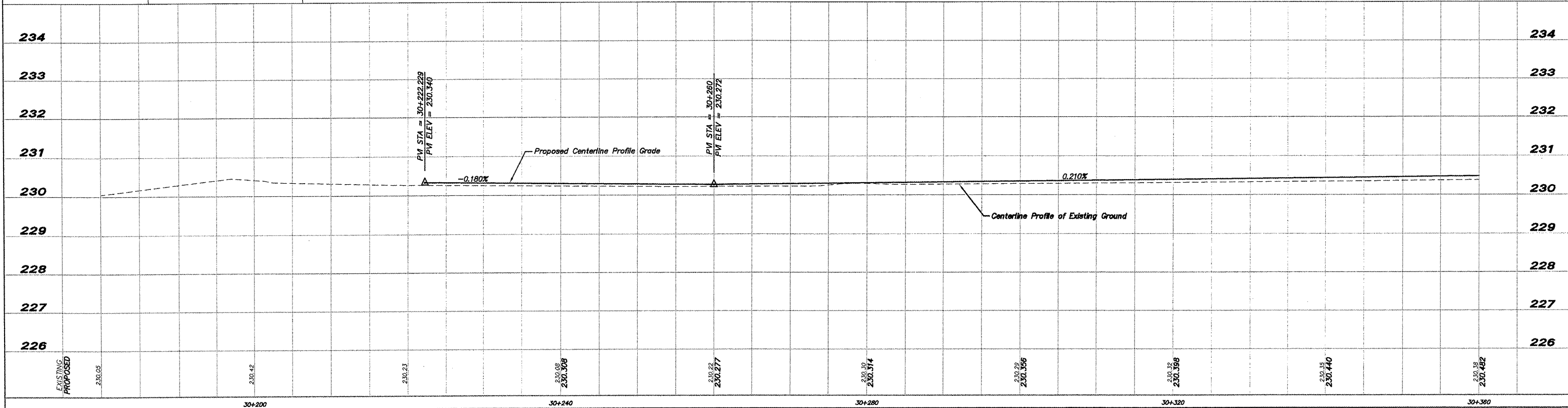


SEE SHEETS #15, #16 FOR PATH ROUTING AROUND FAIRGROUNDS (STA. 0+000.000 - STA. 1+388.375)



NOTE: SEE SHEET 106 FOR DETAIL OF ALIGNMENT AT POWER POLE

MATCHLINE
STATION EQUATION
STA. 30+222.229 (BACK)
STA. 1+388.075 (AHEAD)



EXISTING	PROPOSED
230.05	230.12
230.23	230.308
230.27	230.314
230.30	230.356
230.32	230.398
230.35	230.440
230.38	230.482

SHEET REVIEW	
AGENCY	DATE

REVISIONS		
NO.	ITEM	DATE

SCALE: Hor. = 1:250 Ver. = 1:50
 DRAWN BY: REK
 CHECKED BY: JWH
 DATE: DECEMBER 12, 2011

McClure
 Engineering Associates, Inc.
 7282 Argus Drive, Rockford, Illinois 61107-6837
 (815) 398-2332 FAX (815) 398-2488
 Design Firm License: Illinois 164-000816
 Copyright 2011 By McClure Engineering Associates, Inc.

PLAN & PROFILE 30+180 TO 30+360
 PECATONICA PRAIRIE PATH
 WINNEBAGO COUNTY HIGHWAY DEPARTMENT SECTION 94-00267-00-BT
 FILE:H:\10-042 WINN CO PEC PATH\DESIGN\DRAWINGS\10-042 PP30+180 TO 30+360.DWG JOB:04-30-10-042

SHEET NO.
 17
 OF
 107