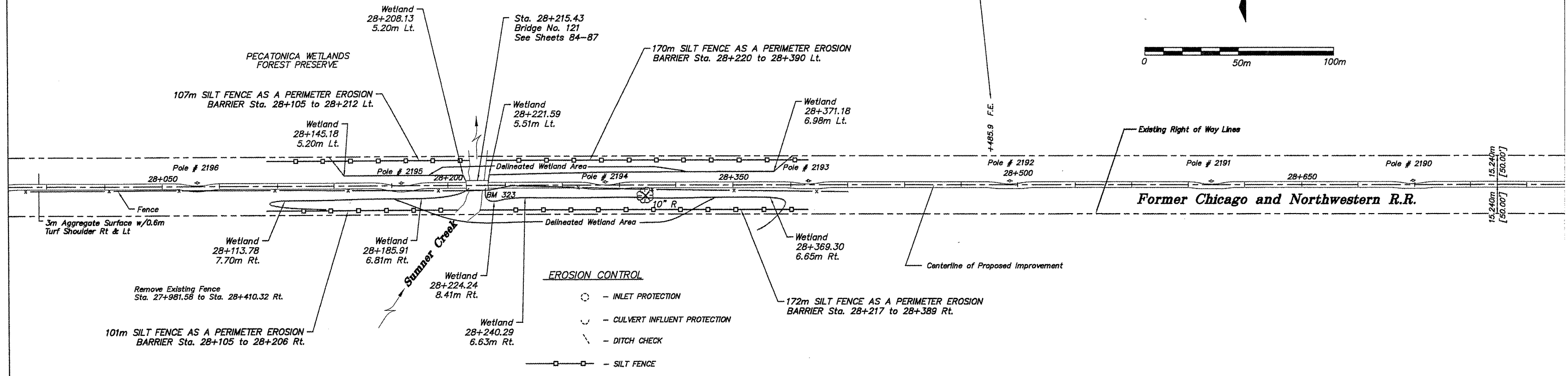
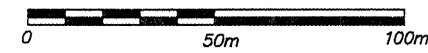
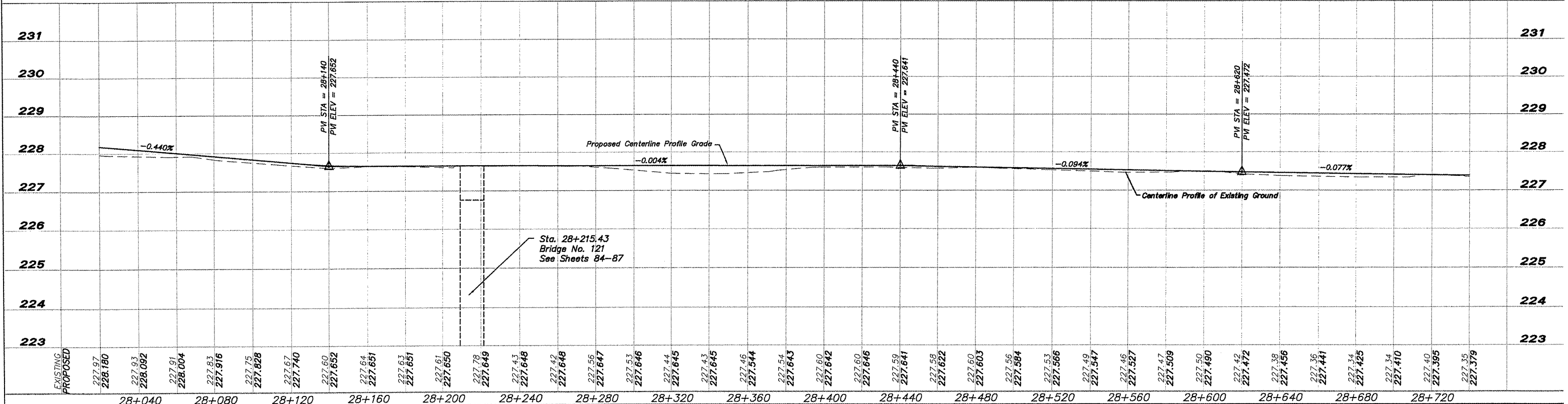


BM 323 North Bolt on the Southeast Corner of Bridge No. 121  
Sta. 28+221.124 1.524m RT. Elev. 228.024

MATCH GRADES AT FIELD ENTRANCES (F.E.) TYPICAL THROUGHOUT PROJECT. SEE SHEET 106 FOR DETAIL OF LIMITS OF WORK AT ALL FIELD ENTRANCES.



NOTE:  
SEE SHEET 106 FOR DETAIL OF ALIGNMENT AT POWER POLE



SHEET REVIEW	
AGENCY	DATE

REVISIONS		
NO.	ITEM	DATE

SCALE: Hor. = 1:1000 Ver. = 1:50
DRAWN BY: REK
CHECKED BY: JMI
DATE: DECEMBER 12, 2011

7282 Argus Drive  
(616) 388-2332  
Design Firm License: Illinois 184-000816  
Copyright 2011 By McClure Engineering Associates, Inc.

**McClure**  
Engineering Associates, Inc.  
Rookford, Illinois 61107-6837  
FAX (616) 388-2486

**PLAN & PROFILE 28+020 TO 28+740**  
PECATONICA PRAIRIE PATH  
WINNEBAGO COUNTY HIGHWAY DEPARTMENT  
SECTION 94-00267-00-BT  
FILE: H:\10-042 WINN CO PEC PATH\DESIGN\DRAWINGS\10-042 PP28+020 TO 28+740.DWG  
JOB: 04-30-10-042