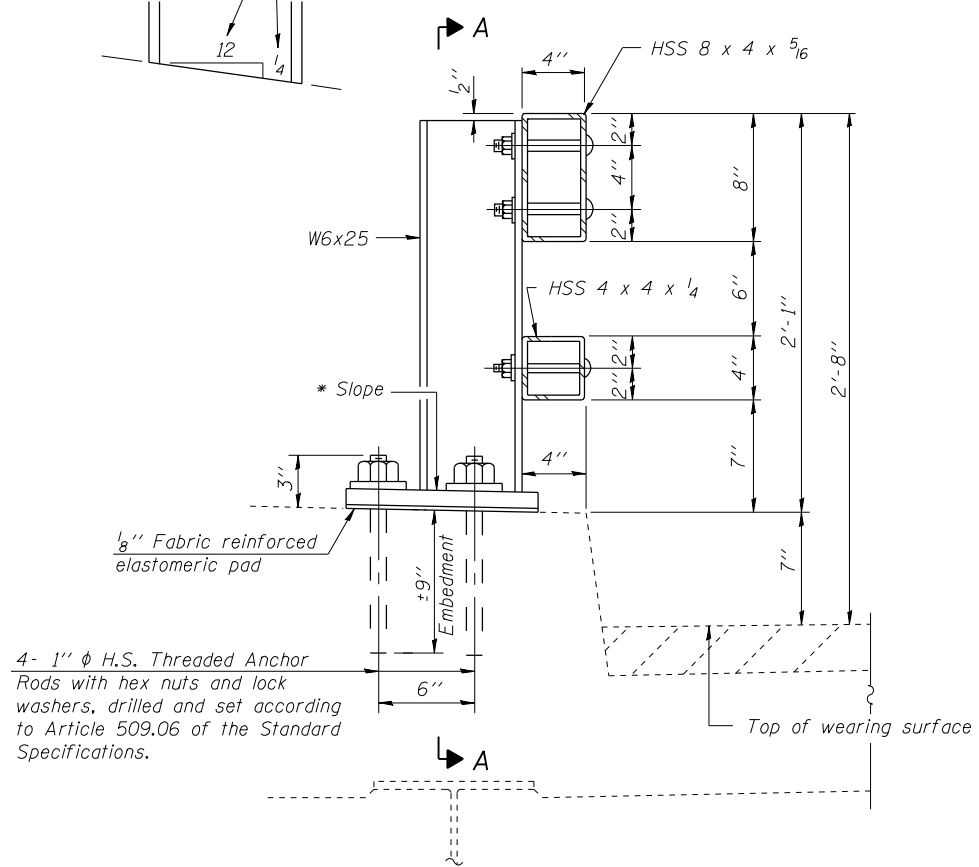
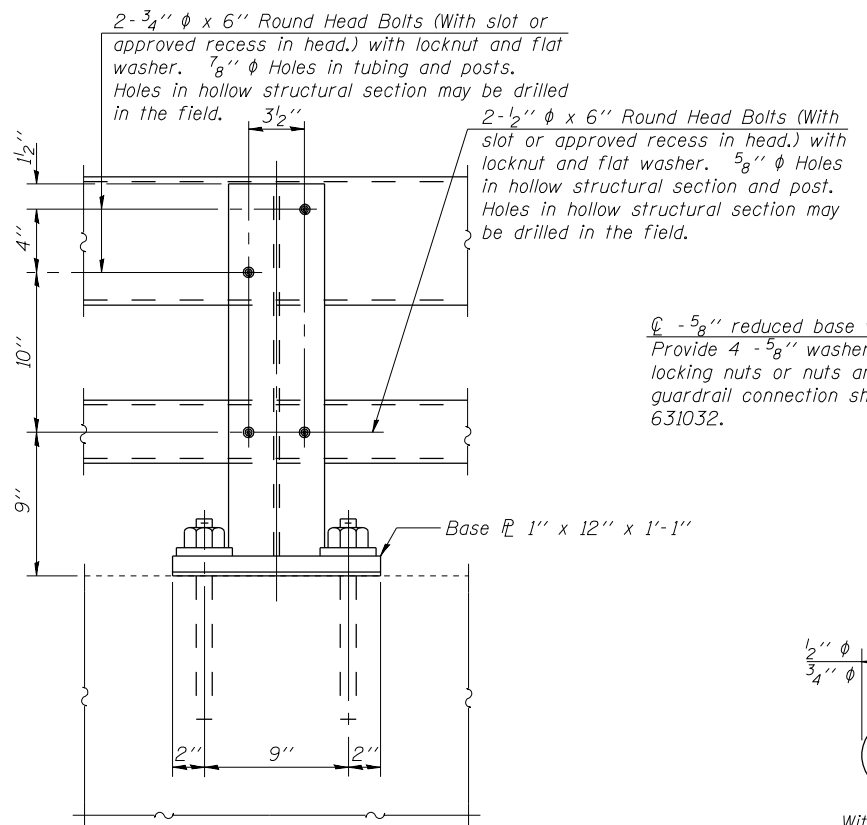


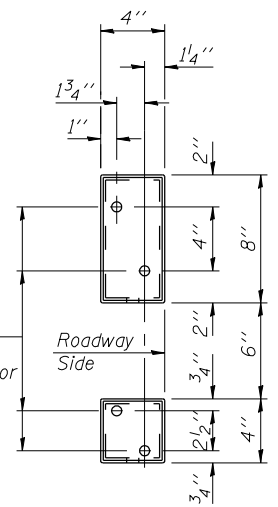
\* Cut bottom end of post to curb slope.



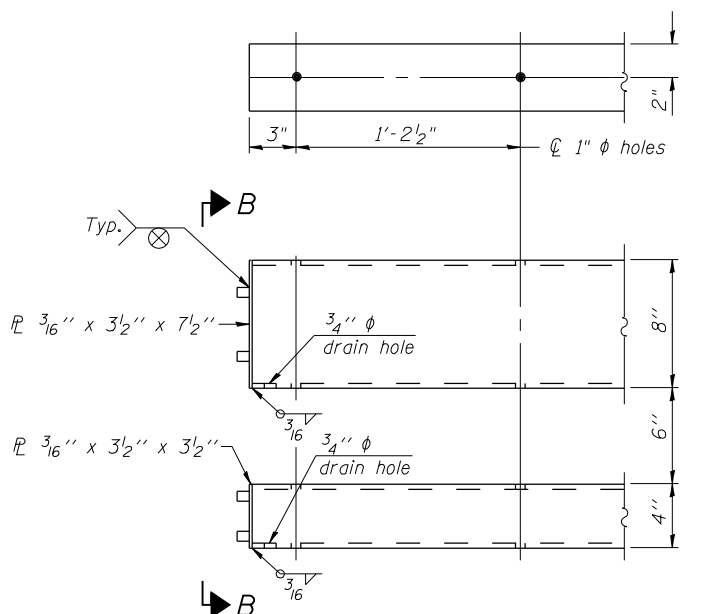
SECTION AT RAIL POST



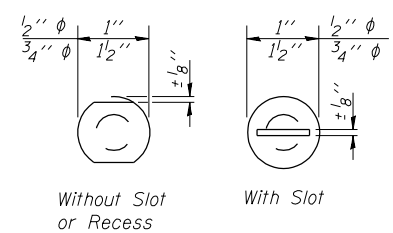
SECTION A-A



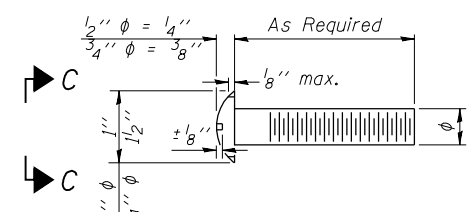
VIEW B-B



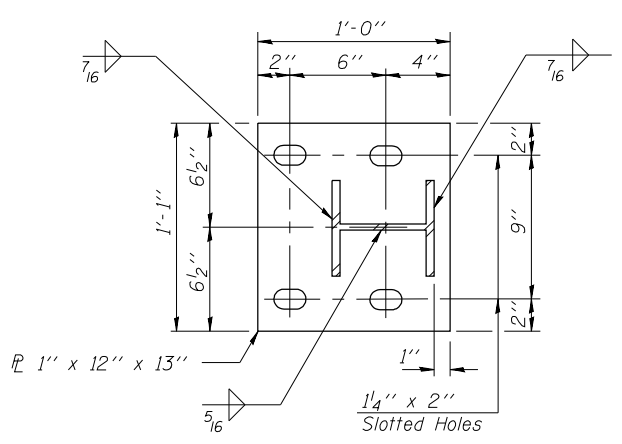
END OF RAIL DETAILS



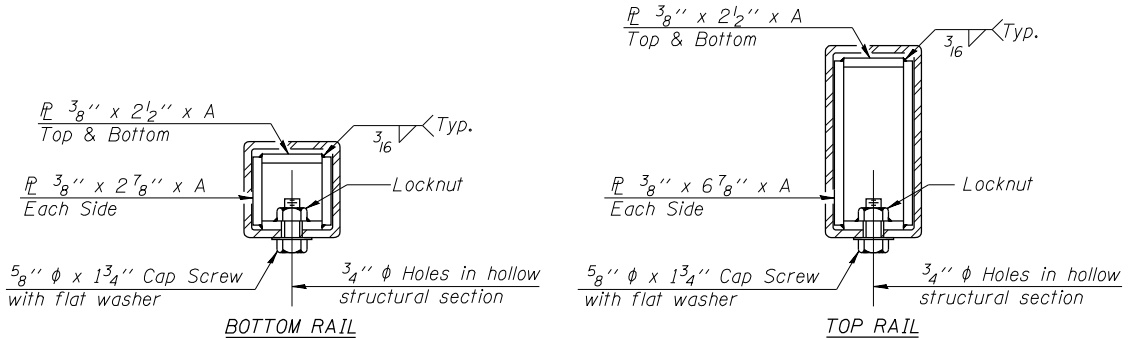
VIEW C-C



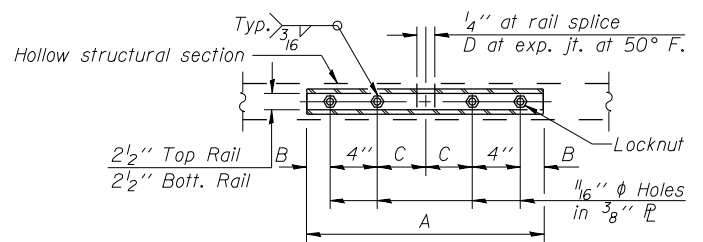
DETAIL OF 1/2" & 3/4" ROUND HEAD BOLTS



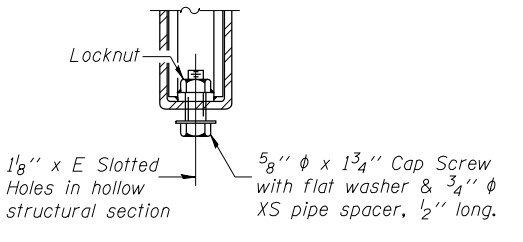
BASE PLATE DETAIL



SECTIONS AT RAIL SPLICE



PLAN-BOTT. SPLICE TYPICAL



RAIL SPLICE CONNECTION AT EXPANSION JT.

Notes:  
 All field drilled holes shall be coated with an approved zinc rich paint before erection.  
 Posts shall not be located closer than 1'-3" to an existing bridge expansion joint or end of bridge.  
 Steel Bridge Rail expansion joint shall be provided between any two (2) posts which span a bridge expansion joint. Bolts located at expansion joint shall be provided with locknuts and shall be tightened only to a point that will allow railing movement.  
 Provide one 1/8" and two 1/16" steel shims for 25% of the posts. Shims shall be similar to base plates in size and holes.  
 All steel rail elements shall be galvanized according to Article 509.05 of the Standard Specifications.

SPLICE DIMENSIONS

T	D	A	B	C	E
≤ 4"	2 1/2"	1'-8"	2"	4"	2 1/2"
> 4" ≤ 6 1/2"	3 3/4"	2'-0"	2 1/2"	5 1/2"	3 1/2"
> 6 1/2" ≤ 9"	5"	2'-4"	3 1/2"	6 1/2"	9"
> 9" ≤ 13"	7"	2'-10"	4 1/2"	8 1/2"	11"
Rail Splice	1/4"	1'-8"	2"	4"	—

T = Total movement at expansion joint as shown on the design plans.

BILL OF MATERIAL

Item	Unit	Quantity
Steel Railing, Type 2399	Foot	56

R-31

7-1-10

(6'-3" Maximum Post Spacing)



USER NAME = RJT  
 ESCA PROJECT NO. 988.08  
 PLOT SCALE = 1/2" = 1' IN.  
 PLOT DATE = 11/16/2011 10:03:48 AM

DESIGNED - RDP 09/11  
 CHECKED - JTS 09/11  
 DRAWN - DWH 11/11  
 CHECKED - RDP 11/11

REVISED -  
 REVISED -  
 REVISED -  
 REVISED -

STATE OF ILLINOIS  
 DEPARTMENT OF TRANSPORTATION

STEEL RAILING, TYPE 2399  
 STRUCTURE NO. 039-2028

SHEET NO. 6 OF 10 SHEETS

F.A.P. RTE.	SECTION	COUNTY	TOTAL SHEETS	SHEET NO.
312	123B-3	JACKSON	58	42
				CONTRACT NO. 78197
ILLINOIS FED. AID PROJECT				